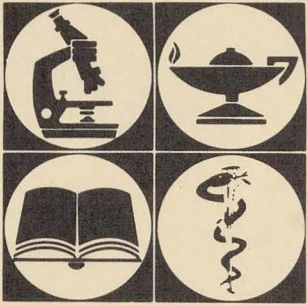


Summer '82
VIII #1



Health News

School of Medicine
University of Nevada



New Physicians on Their Way

The members of the Class of 1982 and their chosen residencies are:

- Edmund P. Alexander, M.D.** - USC/LA County Medical Center - Surgery
Laura J. Anderson, M.D. - UC Davis Affiliated Hospital - General Surgery
Richard H. Ardill, M.D. - University of Nevada Program, Las Vegas - Surgery
Theresa A. Baker, M.D. - University of Wyoming, Cheyenne - Family Practice
Michael T. Barger, M.D. - University of Louisville, Kentucky - Internal Medicine
Matthew J. Barulich, M.D. - Valley Medical Center, Fresno - Obstetrics/Gynecology
Roger M. Belcourt, M.D. - UC Davis - Family Practice
Steven M. Carlton, M.D. - Naval Regional Medical Center, Oakland - Obstetrics/Gynecology
Alan L. Cooper, M.D. - Good Samaritan Hospital, Phoenix - Internal Medicine
Mark C. Dales, M.D. - University of Utah Affiliated Hospitals, Salt Lake City - Orthopedic Surgery
Scott L. Denton, M.D. - University of Arizona Affiliated Program, Tucson - Pediatrics
Susan Desmond, M.D. - UC San Francisco - Internal Medicine
Kent C. Elliott, M.D. - Naval Regional Medical Center, Camp Pendleton - Family Practice
Raymond E. Farmer, M.D. - San Joaquin General Hospital - Flexible
Linda B. Golden, M.D. - UC Los Angeles - Pediatrics
Ian L. Goldman, M.D. - Case Western Reserve University, Cleveland - Urology
Jeffrey J. Gutman, M.D. - University of Colorado, Denver - Surgery
John F. Hilts, M.D. - University of Nevada Program, Las Vegas - Surgery
Mark G. Hueftle, M.D. - Case Western Reserve University, Cleveland - Radiology
Cheryl Hug-English, M.D. - Cedars-Sinai Hospital, Los Angeles - Pediatrics
Gary E. Johnson, M.D. - University of Nevada Program, Reno - Family Practice
Stephen K. Jones, M.D. - University of Nevada Program, Las Vegas - Surgery
Aliya Ibrahim Khan, M.D. - Mercy Hospital, San Diego - Obstetrics/Gynecology
Craig Wm. Klose, M.D. - University of Tennessee, Memphis - Obstetrics/Gynecology
Mark C. Mahterian, M.D. - University of Nevada Program, Las Vegas - Internal Medicine
Stephen L. Mandaro, M.D. - Kern Medical Center, Bakersfield - Flexible
Terrence G. McGaw, M.D. - University of Nevada Program, Reno - Internal Medicine
Robert G. Manolakas, M.D. - University of Nevada Program, Las Vegas - Internal Medicine
Jan D. Meyer, M.D. - San Francisco Children's Hospital - Pediatrics
Mitchell E. Miller, M.D. - Sacred Heart Medical Center, Spokane - Internal Medicine
Matt T. Neibaur, M.D. - University of Nevada Program, Las Vegas - Internal Medicine
Edward J. Ottenheimer, III, M.D. - UC Irvine/Long Beach VA - Internal Medicine
Charles A. Prior, M.D. - U.S. Navy, Portsmouth, Virginia - Obstetrics/Gynecology
Benjamin J. Rodriguez, M.D. - University of Colorado Affiliated Hospitals - General Surgery
Christopher T. Rores, M.D. - Highland General Hospital, Oakland - Flexible
Bruce S. Shapiro, M.D. - Yale University, New Haven - Obstetrics/Gynecology
Scott W. Southard, M.D. - Maricopa County, Phoenix - General Surgery
Martha A. Turchyn, M.D. - VA Medical Center, Martinez - Internal Medicine
Leslie A. Waters, M.D. - Oregon Health Sciences University - Internal Medicine
Kim B. Webster, M.D. - West Virginia University, Morgantown - Family Practice
Cheryl Pinckney Winder, M.D. - Cedars-Sinai Medical Center, Los Angeles - Pediatrics
James W. Winder, M.D. - Cedars-Sinai Medical Center, Los Angeles - Psychiatry

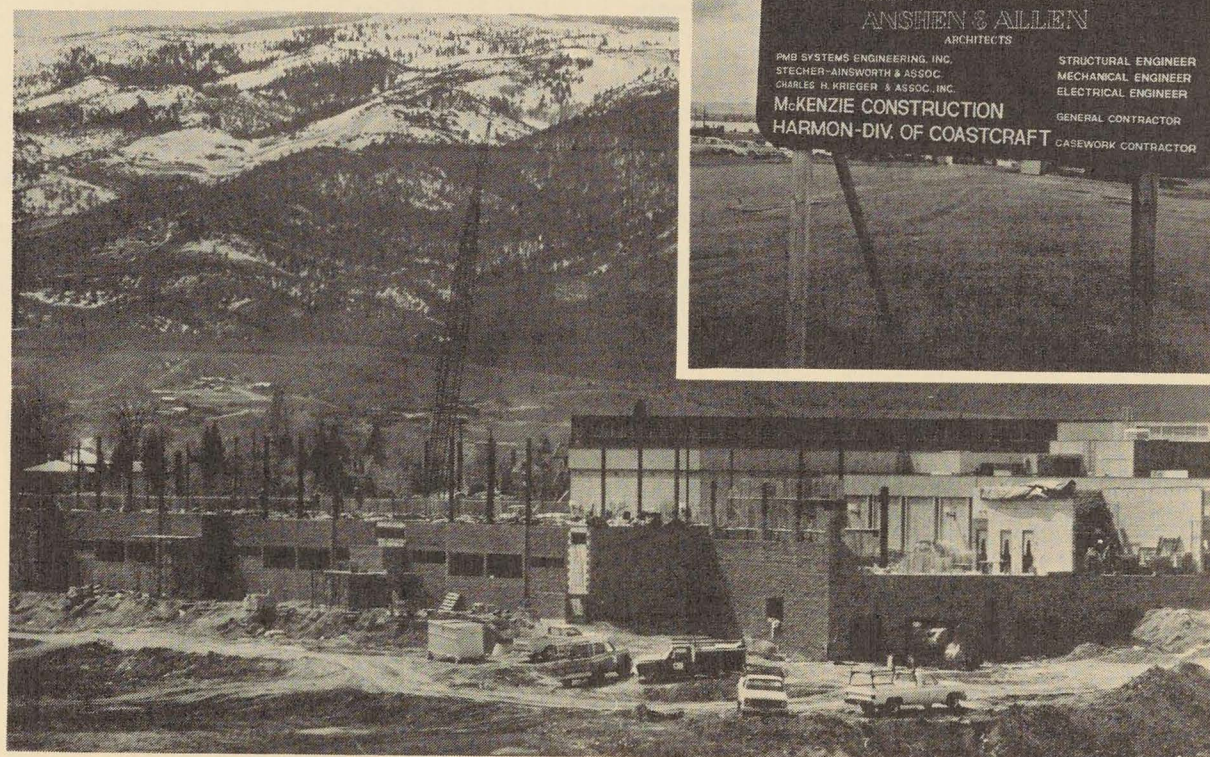
- Nevin W. Wilson, M.D.** - UC San Diego Affiliated Hospitals - Pediatrics
Samuel Wise, M.D. - University of Utah, Salt Lake City - Rehabilitation Medicine
Michael J. Zigich, M.D. - University of Nevada Program, Las Vegas - Internal Medicine

Claude I. Howard Medical Sciences Building

The Claude I. Howard Medical Sciences Building has been introduced to the skyline at the University of Nevada School of Medicine. The two-story structure, with a gross square footage of 38,000', represents Phase IV of development at the school. It will house office, conference and classroom space, as well as the departments of microbiology, pharmacology and biochemistry. The structure is currently under construction by the McKenzie Co. on the east side of the medical school complex, with a projected completion date in early October 1982.

The costs of the building—estimated at \$5.75 million—are underwritten by a \$2 million grant from the Fleischmann Foundation and a \$2 million gift from Las Vegas contractor Claude I. Howard, whose name the building will bear. Interest on these two grants provided the balance of the construction funds.

Architects for the structure are the Reno/San Francisco firm of Anshen and Allen, specialists in medical and scientific design.



Journey to the East

With a high spirit of adventure and anticipation, a contingent of medical school personnel set off across northern Nevada in early May to visit health care professionals in various communities. The trip was designed to familiarize faculty with the assets and problems of health care delivery in rural areas and to spark discussion about what the medical school could and/or should do to help facilitate such delivery.

Chairmen Ralph DePalma, M.D., surgery; Harold E. "Pat" Crow, M.D., family and community medicine; Burton Dudding, M.D., pediatrics; William E. Brenner, M.D., obstetrics/gynecology; Ira Pauly, M.D., psychiatry and behavioral sciences; Ernest L. Mazzaferri, M.D., internal medicine; and Debra Ketchell, M.L.S., medical reference and extension services librarian; Beverley Rowley, M.A., program coordinator for the office of rural health; Kathleen Conaboy, public relations officer; and Dean Robert M. Daugherty, Jr., M.D., Ph.D., headed east on a sunny Monday morning. . . .



Dr. Pat Crow, Bob Daugherty, Ralph DePalma, Ernest Mazzaferri and William Brenner and Mrs. Debra Ketchell (far right) with Ms. Geri Teakle, administrator of the Pershing General Hospital.

In Lovelock, Geri Teakle, administrator of the Pershing General Hospital, gave the group a tour through the facility and, over coffee, answered questions about the viability of a county hospital in a small community. Many of the hospital's beds have been converted to a long-term care facility and a portion of the hospital is dedicated to the Phoenix Program for alcoholism treatment and recovery. Ms. Teakle delivered an extremely optimistic prognosis for the hospital, declaring that it is in the center of a growing and medically demanding community that can make good use of available services and facilities.

The medical staff and administrators of the Humboldt General Hospital and the Humboldt Clinic hosted the Reno contingent for lunch and a tour of their Winnemucca operations. Among the group were Nevada graduate Jim Boyles, M.D., and senior student Cheryl Hug-English, who was completing a rotation in rural medicine prior to her graduation. Concerns in Winnemucca centered on the fact that the community is located far enough from both Reno and Elko that it needs to have well-developed facilities, but there is difficulty in attracting and retaining some specialists, in particular a surgeon.



Dr. Michael Gummer speaking with Dean Daugherty in Battle Mountain.

In Battle Mountain, the medical school group met at the Battle Mountain Hospital with the community's physician, Michael Gummer, M.D., his wife who is a nurse practitioner, and John Marvel, Nevada State Assemblyman for the district. Christopher Rores, a senior student, was also there at the time on a rural rotation.

Dr. Gummer expressed concern about being a lone physician in a somewhat isolated community and was interested in the role the school might play in providing relief coverage and continuing education programs. He expressed delight at having senior students rotate through the hospital, noting that it gives him the opportunity to teach and continue to learn at the same time.

Mr. Marvel spoke about the need for the school to continue to emphasize and

retain its mission to train family physicians.

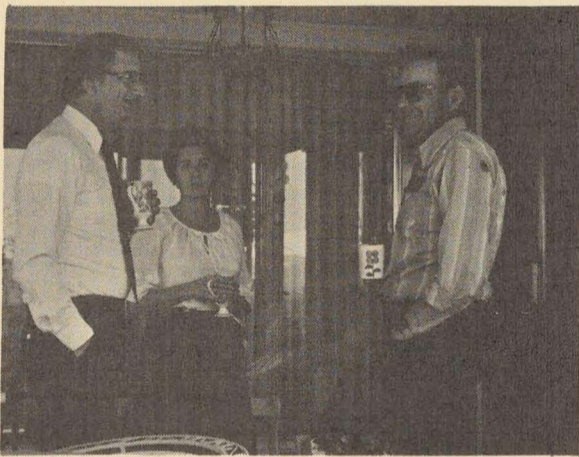
On to Elko, where the group met Monday evening with the physicians from the Elko Clinic for dinner and a roundtable discussion on the general topic of medical care. Because the Elko physicians serve a larger community and function as a group, their concerns were somewhat different from those of their counterparts in smaller communities. They are interested in the medical school as a referral center and complimentary source of health care for their patients. The physicians also expressed a desire for continuing education seminars and for the opportunity to come to Reno periodically to review old or new procedures. They, too, expressed delight at having senior students rotate through the hospital, including Susan Desmond, who was there at the time.



Dr. Bruce Wilkin, a member of the two-year class of 1974 with Dr. Pat Crow in Elko.

In response to a need expressed in all communities, Debbie Ketchell explained her role as an extension librarian whose specific function it is to meet the information needs of physicians in outlying communities. She can do this by providing computer searches and literature directly from the Savitt Medical Library at the school and/or by providing consultation to hospital and clinic libraries in the development and care of their medical collections.

Mrs. Ketchell's position is supported by physicians of the state through their contributions to the American Medical Association's Educational Research Foundation and she therefore functions as the school's liaison with medical professionals statewide. (She can be reached at 784-4625.)



Dr. Bob Daugherty, dean, and Mrs. Beverley Rowley, program coordinator of the office of rural health, with Sen. Norman Glaser at his ranch in Halleck.

On Tuesday morning, the group visited Senator Norman Glaser at his ranch in Halleck. As a member of the Senate Finance Committee, Mr. Glaser has been a supporter of the school and expressed a positive response to the dean's initiative in organizing such a fact-finding trip.



Dr. Bob Daugherty, dean, and Dr. Ira Pauly, chairman of psychiatry and behavioral sciences, with Sharon Meade, F.N.P., at the Wells Clinic.

Lunch was a stop in Wells to see Sharon Meade, F.N.P. of the Wells Clinic. Then it was on to Ely, where the chairmen presented a continuing education program for the physicians of the Eastern Nevada Medical Group at the William B. Ririe Hospital; the hospital hosted a delightful Chinese dinner. The Ely/McGill area has the distinction of having sent more students to the School



Dr. Ernest Mazzaferri, chairman of internal medicine, lecturing at a continuing medical education presentation in Ely.

of Medicine than any other rural community of a similar size; these include senior student Michael Zigich, who was then studying at the hospital.

Wednesday brought the journey to an end.

The trip, which will become an annual event, was filled with memorable personalities, vast and beautiful scenery and the realization on the part of the travelers that rural health care delivery is and should be an integral part of the School of Medicine's concerns. What has been a continuing but low key dialogue has now been renewed and commitments reaffirmed that the school will strive to help facilitate the delivery of quality health care to every Nevada citizen.

Editor's Note

Since the above trip and for the first time in the history of health planning in Nevada, rural physicians will come together to study and recommend solutions for the problems inherent in health care delivery in rural areas.

At its recent annual meeting, the Nevada State Medical Association (NSMA) voted to join with the University of Nevada School of Medicine to form a Rural Health Committee. The committee will advise interested state agencies, the Legislature, the medical society and the school on the health problems faced in rural Nevada and preferred methods for solving such problems.

Questions to be addressed immediately by the committee include: continuing education for physicians in outlying areas; relief coverage for these physicians; and recruitment and retention of physicians for rural communities.

The committee will be composed of physicians practicing in rural areas and will meet in rural communities for its deliberations. Gov. Robert List has indicated support for the committee and for the concept of having rural doctors address rural problems.

Dr. Robert Daugherty, medical school dean, said, "The creation of this group is probably the most exciting event to occur in rural health since the medical school was formed. The school now has a group identified to work with us to solve these longstanding problems. Our Office of Rural Health and other faculty members will be appointed to join the group."

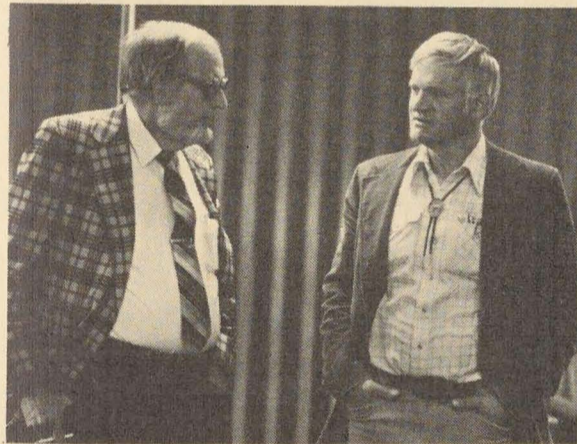
Rick Pugh, NSMA executive director, said there is a straightforward rationale for the formation of the committee.

"It's time to join forces and take a pragmatic approach to Nevada's health care delivery problems," Pugh feels. "We have any number of committees on the state and local levels who review the problems, but no action has been successfully undertaken. There have been too many ethereal approaches that haven't and don't work."

"We need to relieve urban people of this task and get those people who have a proper perspective involved. It's time to ask rural doctors what rural communities need."

He continued, "We're not promising — or even suggesting — that this committee will try to place a physician in every community. We want to make proposals that focus on the individualized needs of each area. We may end up suggesting that a certain town forget about recruiting a doctor and instead rely on a physician's assistant or a good ambulance service to the nearest medical service point. We're going to be realistic."

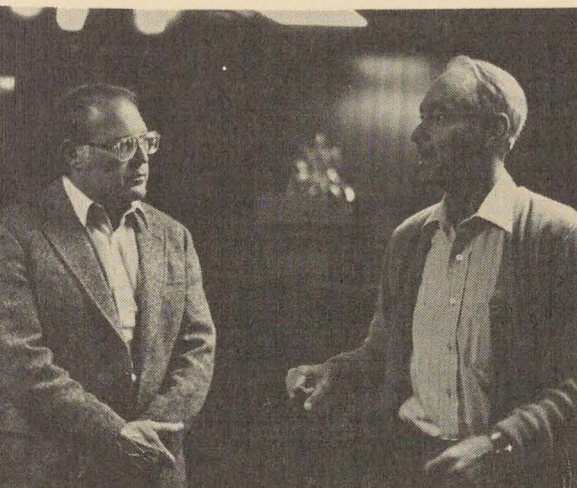
NSMA president Dr. Gordon Nitz said, "I'm convinced that if we get the medical school and the medical society working together with members of this new committee, we can make a difference." Nitz will appoint members to the committee, which should begin deliberations in the early fall.



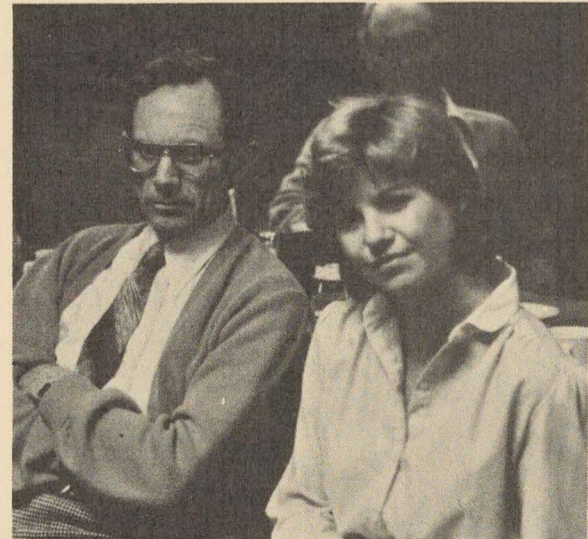
Dr. Pat Crow, chairman of family and community medicine, with Dr. Don Wicker of the Eastern Nevada Medical Group. Dr. Wicker is a member of the School of Medicine's admissions committee and was responsible for the group's visit to the White Pine County High School.



Assemblyman John Marvel in conversation with Mrs. Beverley Rowley and Dean Bob Daugherty at the Battle Mountain Hospital.



Dr. Ira Pauly, chairman of psychiatry and behavioral sciences, with Dr. Collett of the Elko Clinic.



Senior students on rural rotations included (top) Cheryl Hug-English (with Dr. Daugherty in Winnemucca), (center) Susan Desmond (with Dr. St. Allen and Dr. Collett in Elko) and (bottom) Michael Zigich (with Dr. Daugherty in Ely).

Seminar to Focus on Bioethics

The School of Medicine, the School of Nursing, the Division of Continuing Education and the Nevada Humanities Committee are co-sponsoring a series of seminars over the next year that will focus on bioethics. The first meeting, to take place Sept. 17 at the Airport Plaza Hotel in Reno, will focus on Patient Rights and Family Rights. Guest speakers include Andrew Jameton, Ph.D., adjunct assistant professor of ethics and medicine at the University of California, San Francisco and Kathryn Boom, R.N., M.S.N., parent-child clinical nurse specialist at Sutter Memorial Hospital in Sacramento. Among the 16 topics to be covered in small discussion groups are termination of care, how much to tell the patient, non-compliant patients and families, development and use of new technology, social responsibility of health care professionals, use and abuse of patients in the teaching environment, and to resuscitate or not to resuscitate a defective newborn. For more information about the program, contact Owen C. Peck, M.D., 784-6001.

Health News

School of Medicine
University of Nevada
Reno, Nevada 89557-0046

Nonprofit Org. U.S. Postage PAID Reno, Nevada Permit No. 26

HEALTH NEWS is published quarterly by the University of Nevada School of Medicine, (702) 784-6001.
Send inquiries or news contributions to: **HEALTH NEWS**, University of Nevada School of Medicine, Manville Medical Sciences Building, Reno, Nevada 89557-0046
Editor: Kathleen Conaboy, Public Relations Officer
Editorial Consultants: Edna Brigham, Development Officer
Dr. Robert M. Daugherty, Jr., Dean
Volume 8, Number 1 - Summer 1982