

14
Sheep Ranch, Union Pacific, Vegas.
Jan 1881. St. Thomas, Colorado. Calotte

Cupboard 27
Shelf 3
No. 4
1 book

RECONNAISSANCE.

Book No. 6.

EDWARD DENNY & CO.
 STATIONERS,
 Account Books Bound and
 Printed to order.
 512 SACRAMENTO ST.
 Bet Sansome & Leidesdorf
 SAN FRANCISCO.

504 40
 256-37

248

247-07
 52-32

94-55

305-13

46-30

120-

316-30

82-85-35
 54-43

737-2-30

111-48

1-23

66-

4

112

155-46

46-31

278-24

432-151

Spencer

1480

475

292

182

292-52

495-12

202

272-13

205

343-25
 213-28

80-10

65-5

155

40-173

74-73

06

06

06

06

06

06

06

06

06

06

06

06

06

06

06

06

160-23
 290-37

299-08

65-5

155

40-173

74-73

06

06

06

06

06

06

06

06

06

06

06

06

06

06

06

06

299-08

299-08

299-08

299-08

299-08

299-08

299-08

299-08

299-08

299-08

299-08

299-08

299-08

299-08

299-08

299-08

299-08

299-08

299-08

299-08

299-08

299-08

299-08

299-08

299-08

299-08

299-08

299-08

299-08

299-08

299-08

299-08

299-08

299-08

299-08

299-08

299-08

299-08

299-08

299-08

299-08

299-08

299-08

299-08

299-08

299-08

299-08

299-08

299-08

299-08

299-08

299-08

299-08

299-08

299-08

299-08

299-08

299-08

299-08

299-08

299-08

299-08

299-08

299-08

299-08

299-08

299-08

299-08

299-08

299-08

299-08

299-08

299-08

299-08

299-08

299-08

299-08

299-08

299-08

299-08

299-08

299-08

299-08

299-08

299-08

299-08

299-08

299-08

299-08

299-08

299-08

299-08

299-08

299-08

299-08

299-08

299-08

299-08

299-08

299-08

299-08

299-08

299-08

299-08

299-08

299-08

299-08

299-08

299-08

299-08

299-08

299-08

299-08

299-08

299-08

299-08

299-08

299-08

299-08

299-08

299-08

299-08

299-08

299-08

299-08

299-08

299-08

299-08

299-08

299-08

299-08

299-08

299-08

299-08

299-08

299-08

299-08

299-08

299-08

299-08

299-08

299-08

299-08

299-08

299-08

299-08

299-08

299-08

299-08

299-08

299-08

299-08

299-08

299-08

299-08

299-08

299-08

299-08

299-08

299-08

299-08

299-08

299-08

299-08

299-08

299-08

299-08

299-08

299-08

299-08

299-08

299-08

299-08

299-08

299-08

299-08

299-08

299-08

299-08

299-08

299-08

299-08

299-08

299-08

299-08

299-08

299-08

299-08

299-08

299-08

299-08

299-08

299-08

299-08

299-08

299-08

299-08

299-08

299-08

299-08

299-08

299-08

299-08

299-08

299-08

299-08

299-08

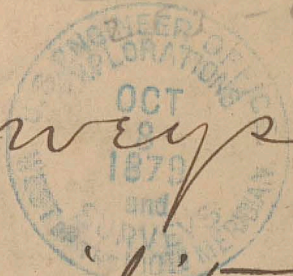
368 - 41

115 - 1

- 40

Hamel

-405 26
173 - 45
1-41



Surveys for No 6

Military Defences

Military Dep't

California

Geo M Wheeler

U.S. Engineer

1869

Book No 6

835-41
102-19
293-24
103-19
190

269-02
103-19
165-

242-24
100-19

2238
285-
2993-
2231
2231

452-36
456-06
156-30

442
287
15-5-

186-9
173-45
360-21
186-9
173-45
360-21

41-82
28-85

60-861
45-01
150-162
22-857
22-64
15-22

282-51
462-43
179-52

320-26
105-18
215-08

429-40
105-18
324-22

268-54
714-18
154-36

471-56
232
239-56

69-40

621
254-23
166-37

458
303-2
254-36

254-50
198-14
156-24
303

164-15
145-55
18-55

295-43
196-30
141-28

295-36
152-07
143-07

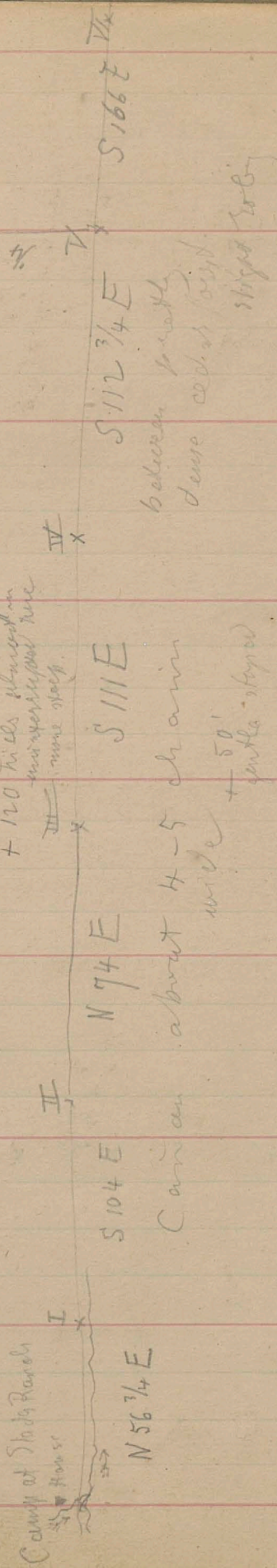
254-10
50-04
203-25

130-24
96-45
500-48
304-48
196

317-56
123-30
184-30
237-06

293-51
159-09
156-40
294-09

4 mi. W. of point A + 150' from the creek



Camp at Shady Ranch

House

N 56 3/4 E

I

S 104 E

II

N 74 E

Canyon about 4-5 chains wide

III

S 111 E

+ 120 hills throughout - more steep

+ 50' gentle slope

IV

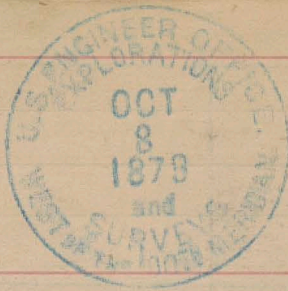
S 112 3/4 E

between fairly dense cedar forest

slight rise

V

S 166 E



278-09
9.

	(1)	(2)
0-1	607	-620
1-2	140	-140
2-3	186	-185
3-4	474	-487
4-5	112	-115
5-6	216	-228
6-7	348	-356
7-8	131	-131
8-9	504	-507
9-10	253	-264
10-11	152	-166
11-12	441	-502
12-13	193	-238
13-14	301	-323
14-15	268	-290
15-16	586	-618
16-17	356	-363
17-18	204	-214
18-19	250	-250
19-20	54	-55
20-21	247	-251
21-22	212	-206

278-09
87-38
190-30
275-83
87-78
188-15

~~4444~~ S. 267 W
which we came in

+ 150
Kiss back
1144
fossil

XVI
S 106 E

XV

N 83 E

about
800
wide

XIV

N 82 E

Big narrow
road very
cracked
and
very
narrow
road
very
narrow
and
very
narrow
road

XIII

S 152 E

XII

N 47 E

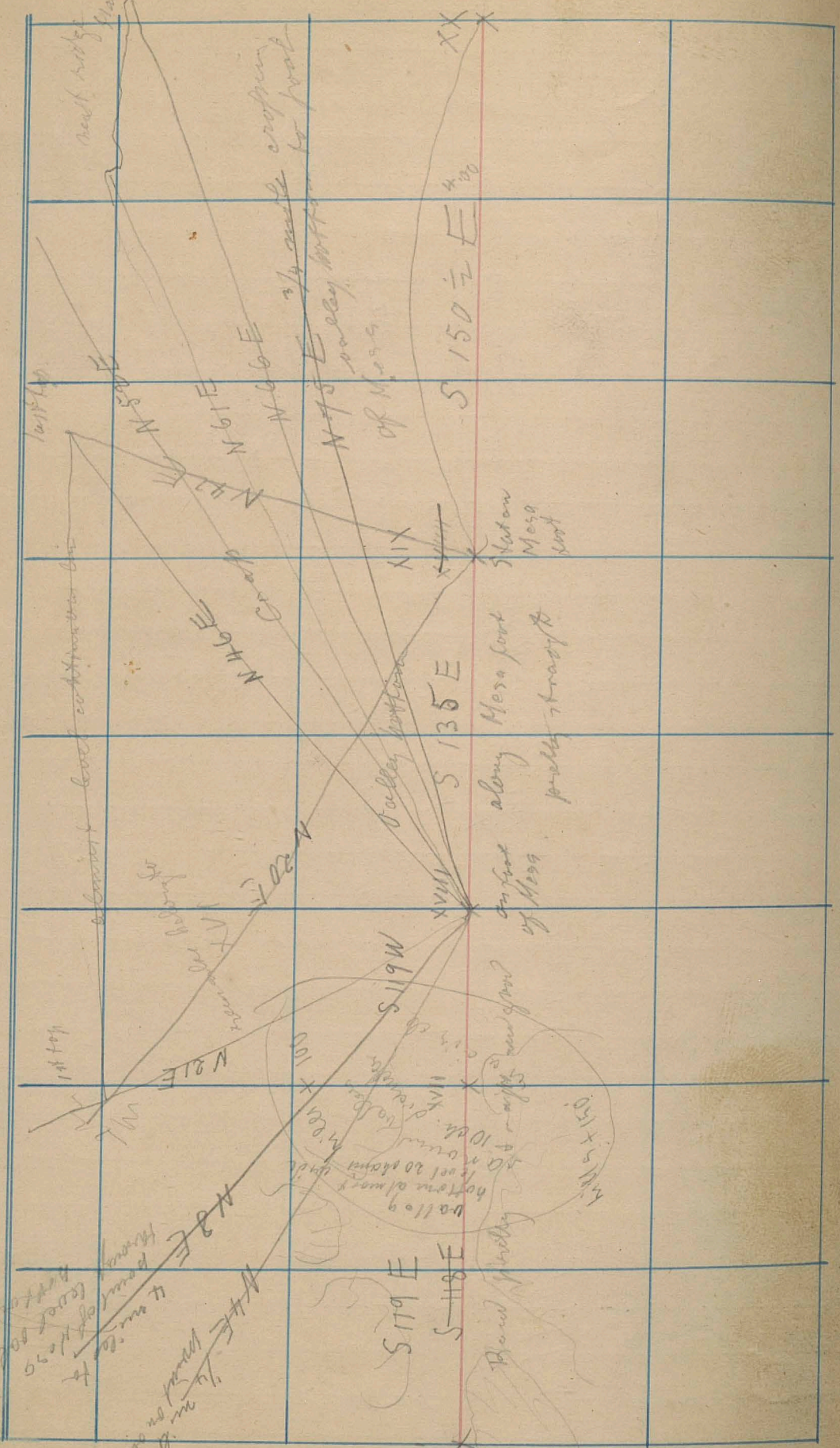
road
winding

XI

road
going
through
open
ground
+ 300
fossil
near

+ 300

+ 300



next ridge

last top

consistent level continuation to

1st top

1/4 mile to top of mesa

N 66 E 1/4 mile to top of mesa

N 75 E valley bottom to foot of mesa

N 16 E

N 22 W

S 119 W

S 135 E

S 150 E

400

XX

Station Mesa foot

along Mesa foot probably straight

end of mesa

circle

S 115

S 119 E

S 118 E

Blind valley

N 22 E 1/4 mile to foot of mesa

N 44 E 1/4 mile to top of mesa

Wagon bottom almost level 100 yds to top of mesa

1/4 mile to top of mesa

XX

XX11

S 14 3/4 E

~~N 89 E
Dy road~~

1 mile to Maso Jun
NE

East 12 ch. do part of
Stat in low Tunks
N 0 1/2

S 12 5 1/2 E

~~N 84 E
Dy road~~

to head
of Hill
and west hill

S 20 3 W

N 69 E
Dy road

+ 20'
on Mesa
hill
Tad

S 15 0 1/2 E

M 0 9 9
D 0 1 1 0

S 21 2 W
Pyramid

East top
238 W
1st top
253 W

90 East
1/4 mile to Ka
Boscom's Point
Dy road

1/4 mile to
Tad

1/2 mile in this line
to Mesa (as far)
from
chain
line
to
top
of
hill

3050

N 33 1/4
N 16 m
at 1000 ft

N 19 E
N 19 m
at 1000 ft

N 8 E

N 5 1/2 E

N 3 1/2 E

N 3 1/2 E

N 4 3 E

N 3 1/2 E

top obs ridge

to top of cone

top obs ridge

top of peak of pyramid

Back almost on top of peak

S 14 2 3/4 E

Pretty straight west

L chain

to

N 25 at foot

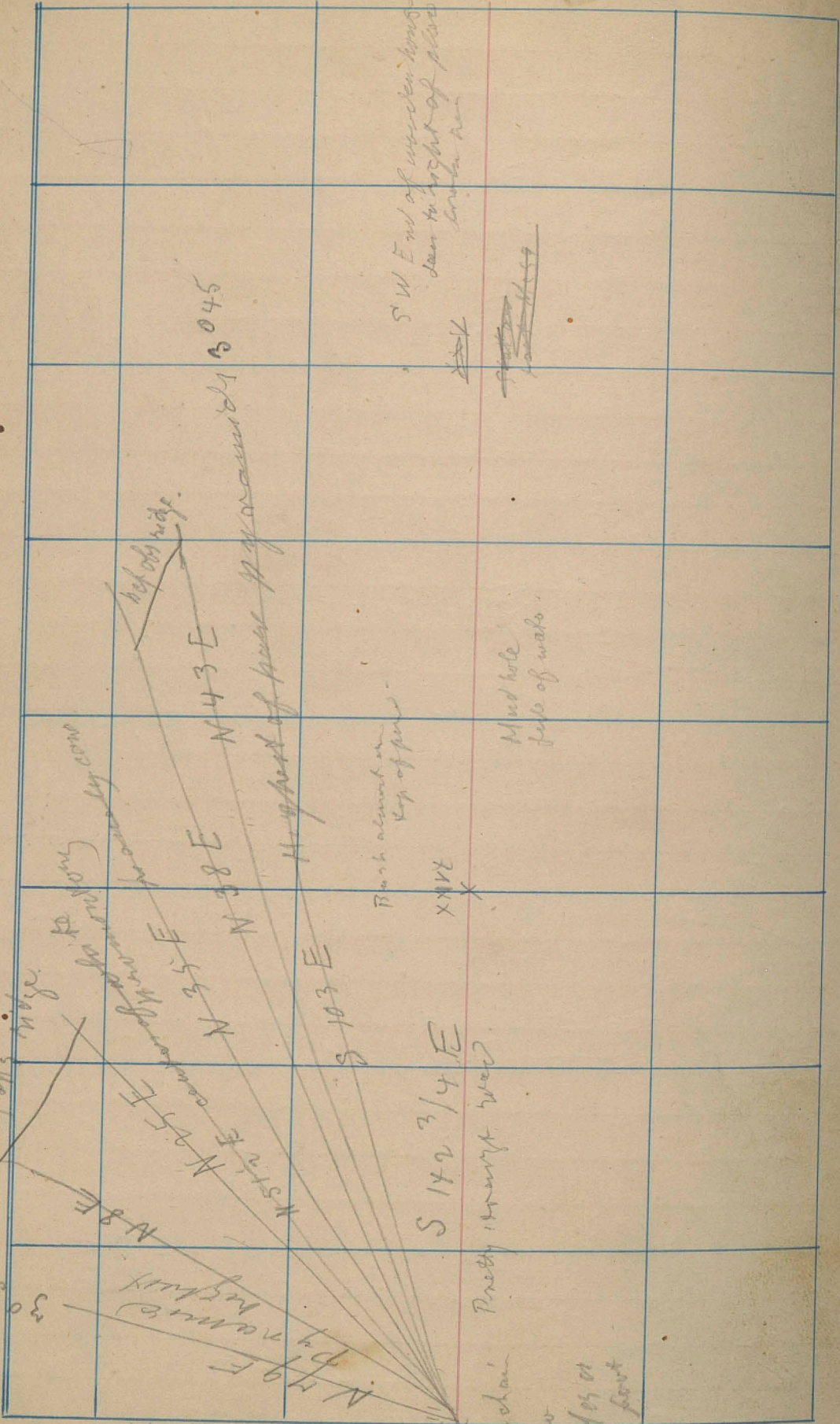
S 10 3 E

X NW

SW End of wooden lines
seen to height of five
meters

~~N 43 E~~
~~N 3 1/2 E~~

Mud hole
edge of wall



Bearing of Mark
 62° 6 1/2'
 460 32

 Elongation
 150 34 1/2

 10 11 1/2

S 142 3/4 E
 Camp

Swamp

XXVI

30 chains green valley
 Kill Mora foot

S 156 1/2 E

Trails along further
 outside of canal

S 172 E

Swamp
 with valley between
 hills

Hill + 120
 XXV
 Hill behind house

Hill + 120
 XXV

S 155 E
 XXIV
 Road along
 valley to
 Camp

Open
 potato
 field

9000
 5000

S 157 1/2 E
 XXIII

Creek

9000
 5000

N 8 E
 N 11 E
 N 28 E
 N 39 E
 N 63 E
 N 83 E

Spring

As ridge
 to camp
 (100)

As ridge

Hill

to
 camp

to
 camp

to
 camp

to
 camp

to
 camp

to
 camp

to
 camp

to
 camp

to
 camp

to
 camp

to
 camp

to
 camp

to
 camp

to
 camp

to
 camp

to
 camp

to
 camp

to
 camp

to
 camp

to
 camp

As ridge

to
 camp

to
 camp

to
 camp

to
 camp

to
 camp

to
 camp

to
 camp

to
 camp

to
 camp

to
 camp

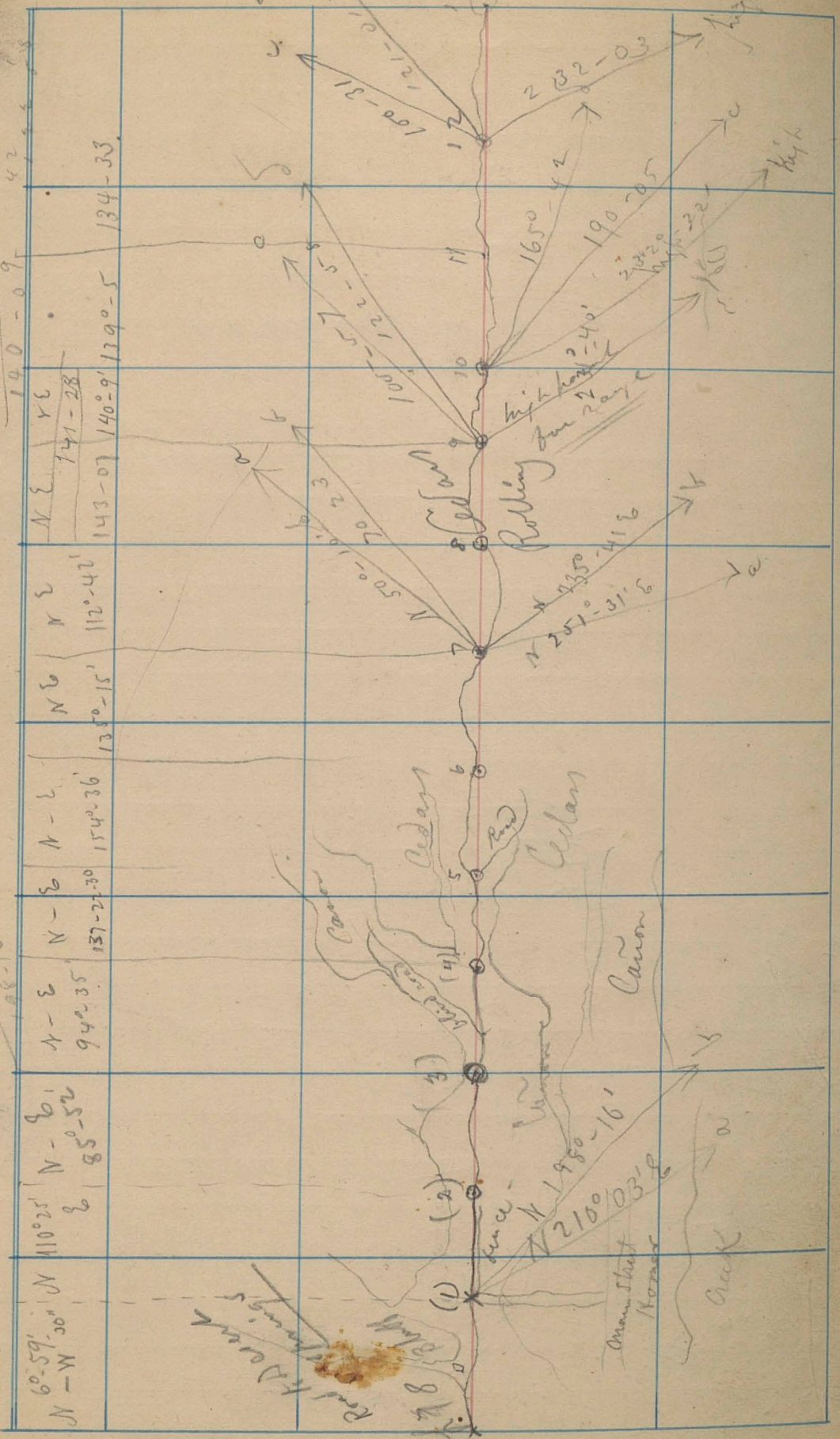
to
 camp

to
 camp

482-10
 342-1
 140-09

464-5
 42

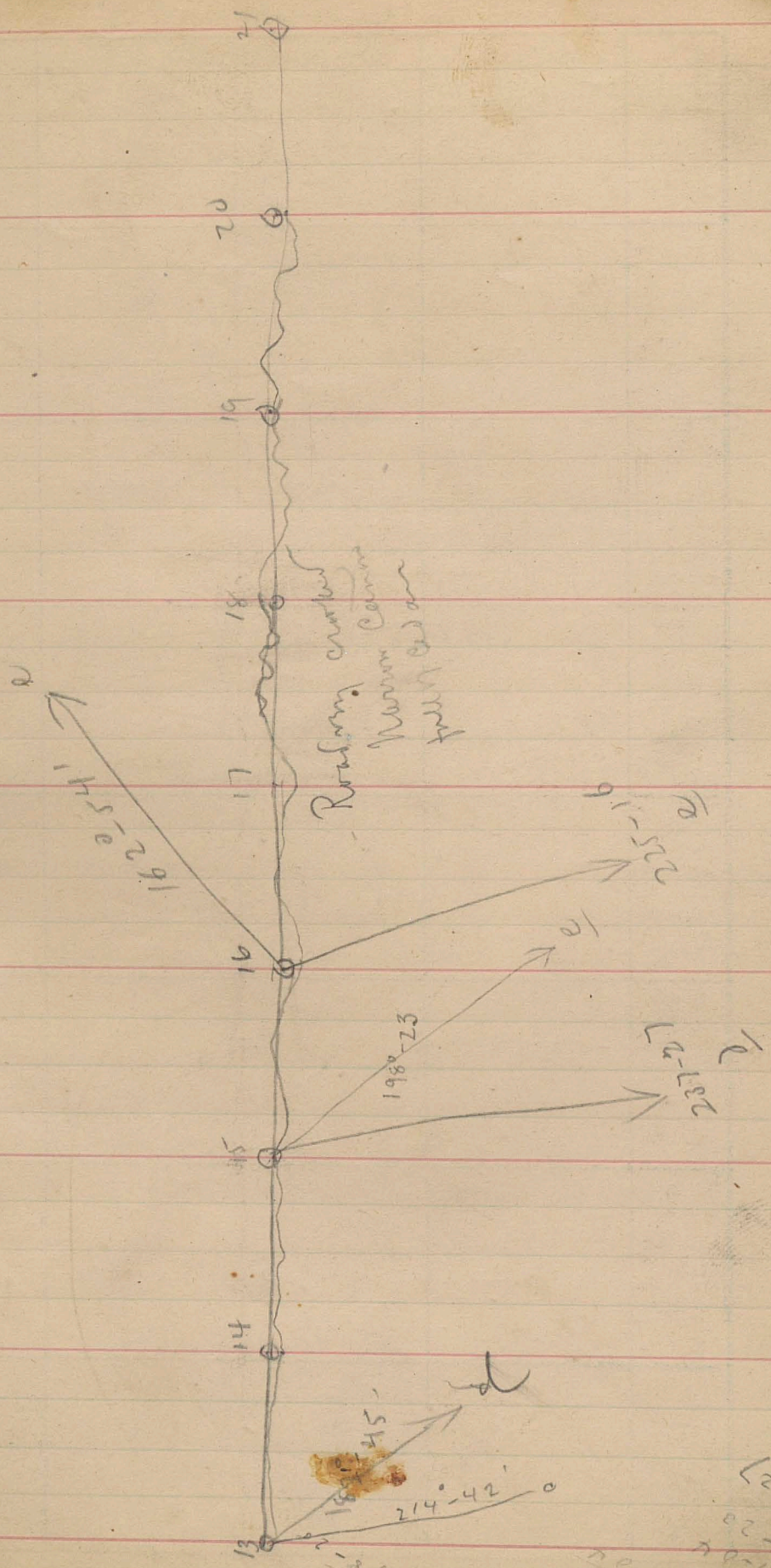
195-29
 1-23
 195-6



140-09
 1580-01
 573-41 NE
 182-31
 202-20
 206-41

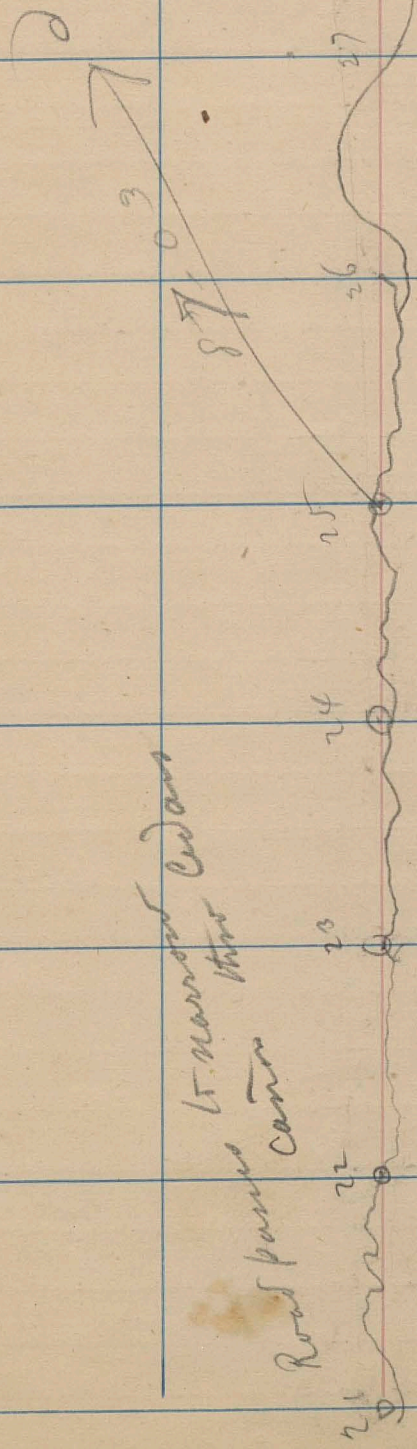
1580-01
 573-41 NE
 342
 231-40

140-09
 1580-01
 573-41 NE
 342
 231-40



12-20
 10-20
 10-20
 10-20
 10-20

N - 2 133-08	186-5-1	258-47	241-04	229-48	225-43	239-56	248-00
-----------------	---------	--------	--------	--------	--------	--------	--------



Road passes center

5 narrow cut dikes

87

2

196-00

283-38

223-42

238-31

253-40

300-24

281-31

816-30

San Joaquin valley = Mag North

John with 136

25
34

26

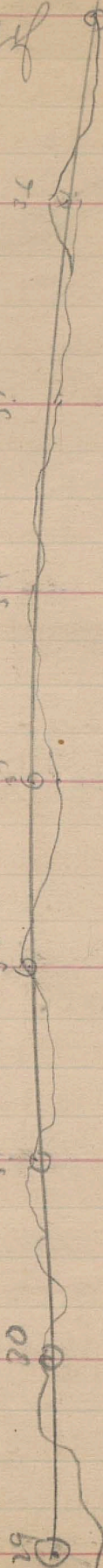
32

31

27

20

29



96 29
 1-35
 270-15
 68-25
 315-52
 314-17
 310-38
 121-56
 186-42
 204-23
 328-19
 123-56

183-47	106-30	194-4	184-00	190-30	185-03	215-08	204-23
191-51 = 18 paces from Eagle to Rose Valley							

west points

old ponds

180-55 W
188-15

Along fork hills

Rose Valley

Main Canyon

186-36
 196-09
 204-23
 268-25
 314-17
 228-22
 324-16
 11-10
 11-10
 11-10
 11-10
 11-10

254-36

179-52

166-37

Barkly M

58-28

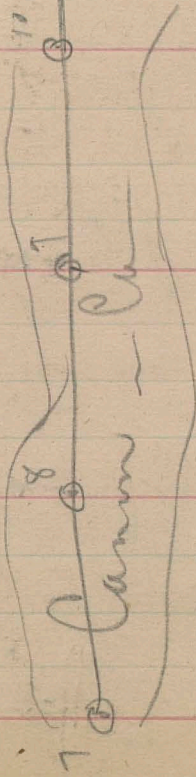
177-56

1° 32'

238° 28'

49

Bluff

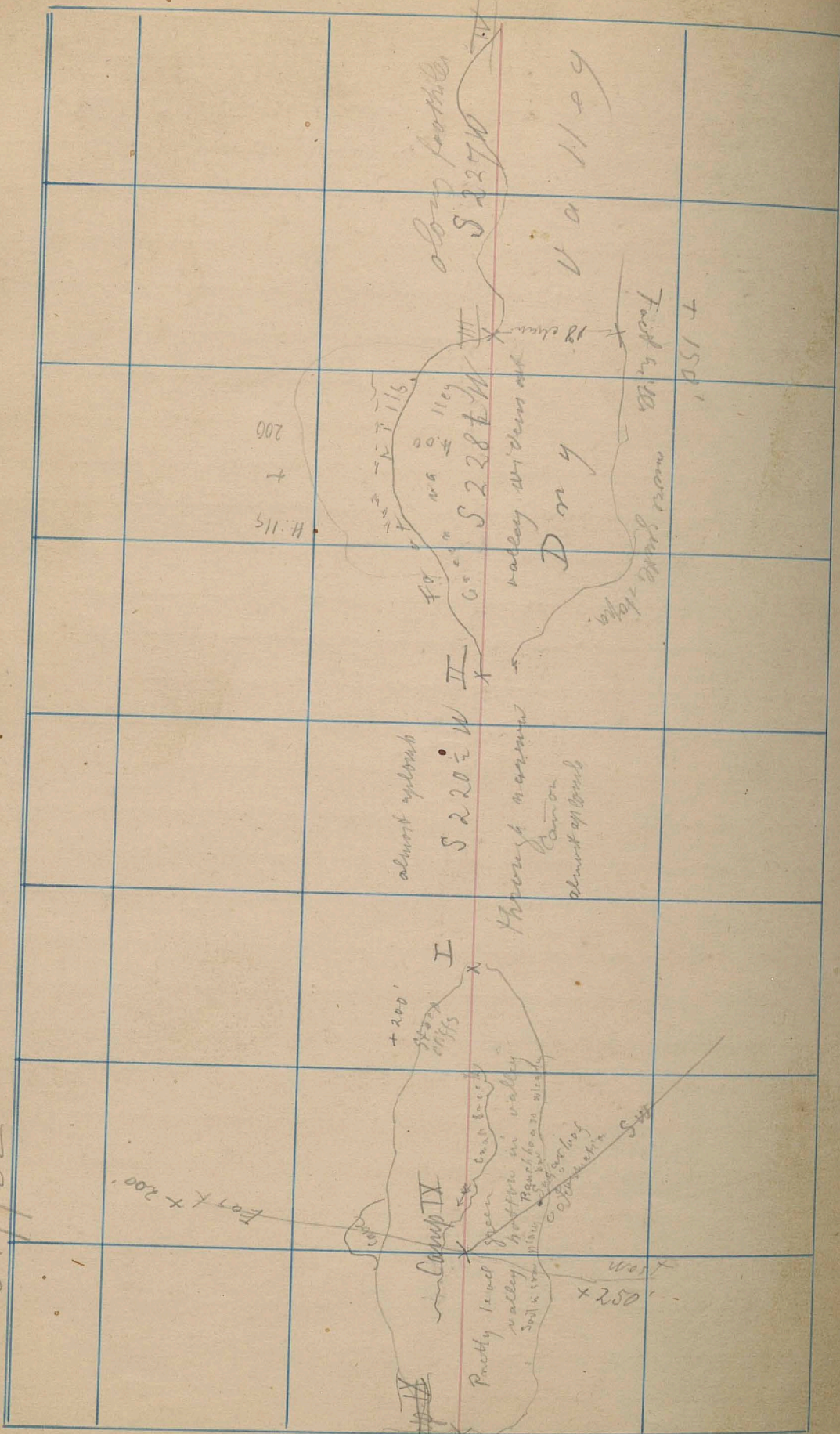


Bluff

Bluff
Cannon - Ca

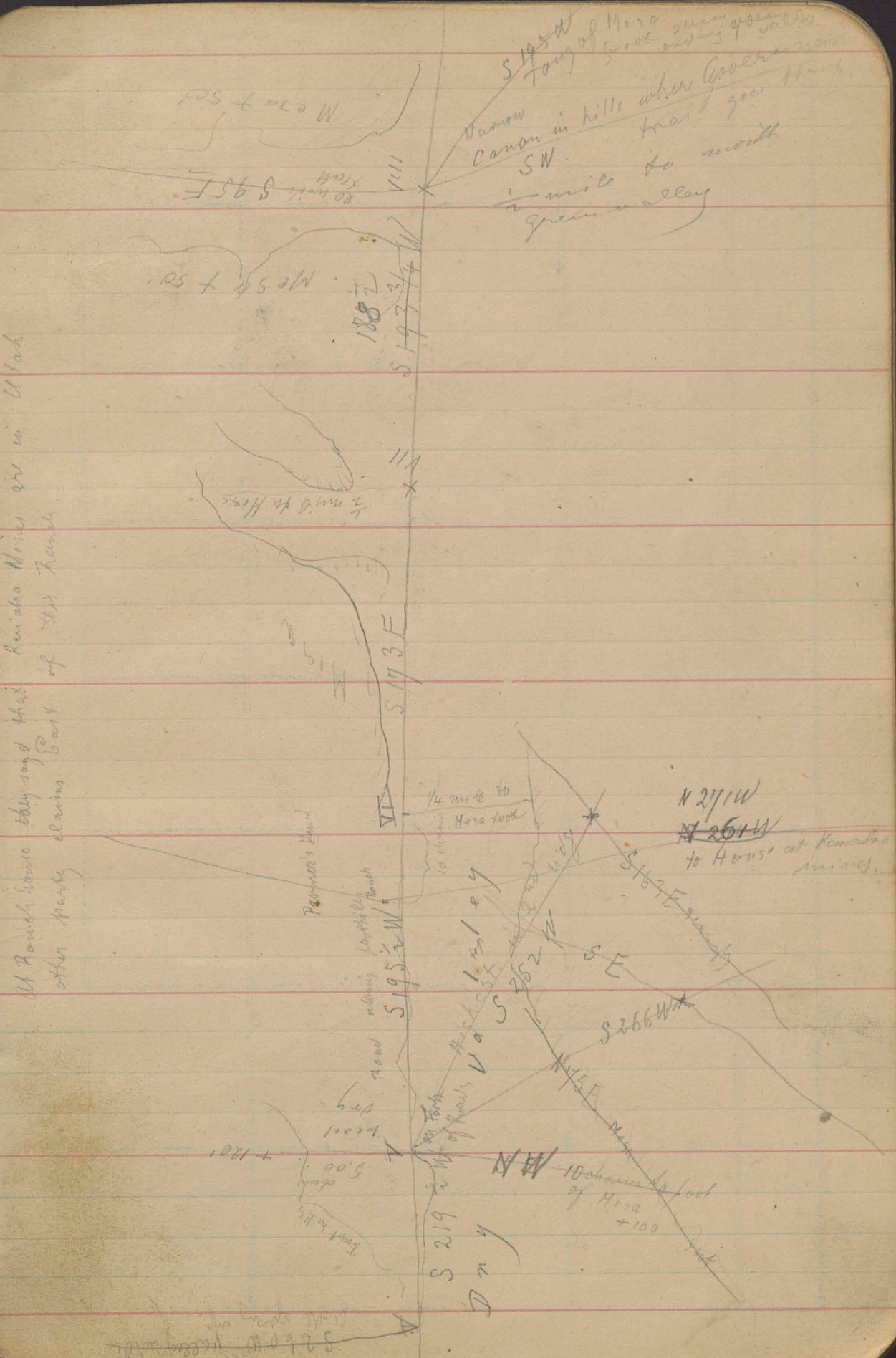
210-00
228-19

S 177 E



Steep in the rocky

At Ranch house they say that Remada Mines are in Utah
 other nearby claims East of this Ranch



N 27° 10' W
 N 26° 10' W
 to House at Remada mine

S 195° 30' Tary of Mora ...
 Narrow Canon in hills when you turn SW.
 1/2 mile to mouth Green valley

N 54° 45' E
 188 ±
 S 193° 3/4 W

2 mi. S W Hosa
 S 173° E

1/4 mile to Hosa fork
 10 miles

N 27° 10' W
 N 26° 10' W
 to House at Remada mine

Remada's Ranch
 S 195° 30' W

Green valley
 S 252° N
 S 266° W
 S 167° E
 S 219° 30' W
 Day

5.00
 120
 Front hills

10 miles to foot of Mora + 100

S 266° W ...

several roads
coming from center

in diff direction

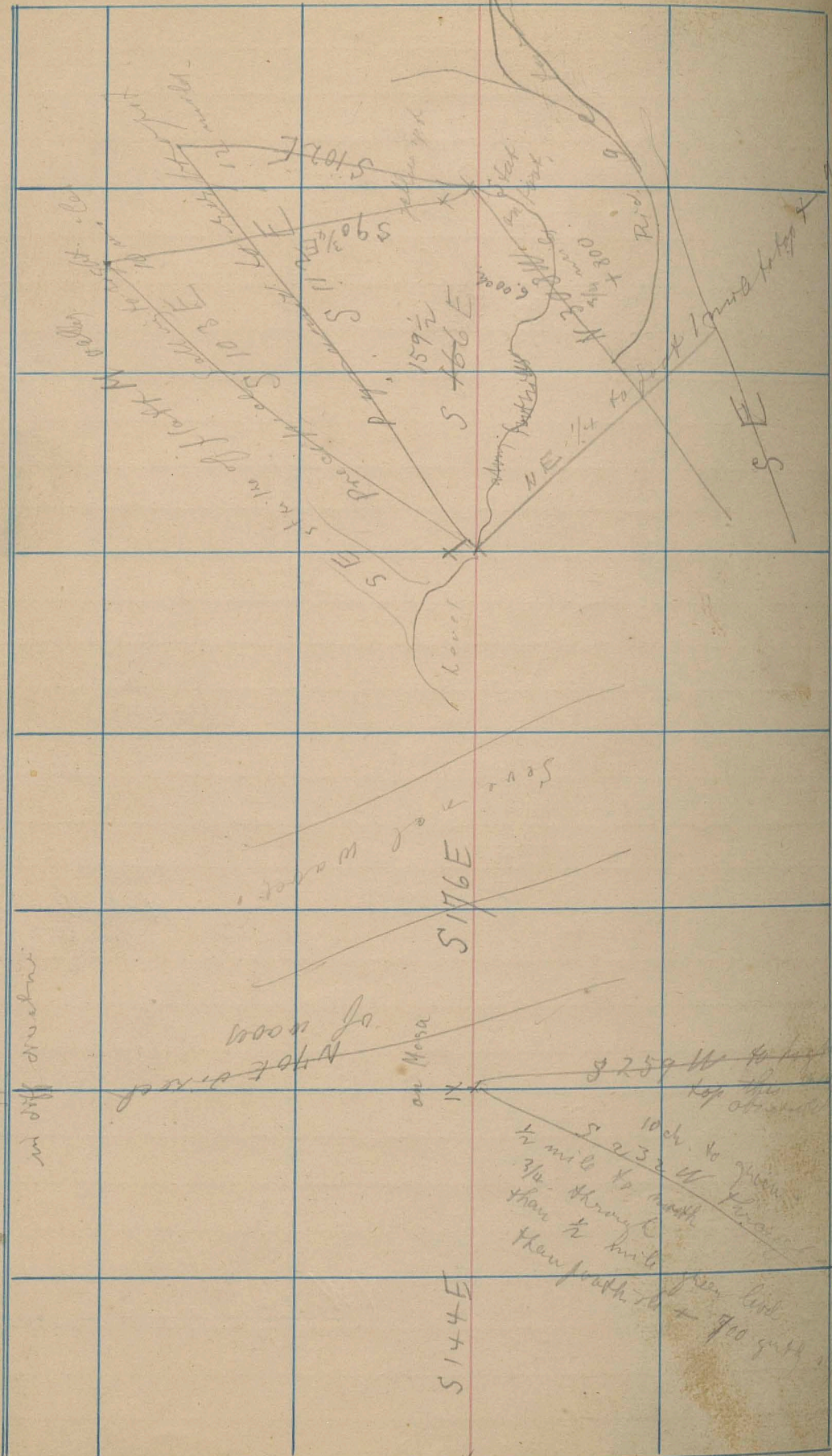
NOTE: Wind
of 10000 ft

on Mesa

S144E

S176E

S166E



S 232 W to top of mesa
10 ch. to green
1/2 mile to north
3/4 through
than 1/2 mile
then north to
green line
700 feet

S 1/2 3/4 E

Bound along postholes

XII

X

burn
inter
with
quartz
single
crystal

S 165 E

XIII

S 22 W

XIV

S 20 W

XV

S 178 35 W
600

Summit

N 274 W highest pt. 1000

N 6 W 1/2 mile to top of 500

~~11415~~

~~NY 4 E (21)~~

20

11' along fault line

S 203 3/4 W

S 247 E W

S 19 3/4 W

XVIII

XIX

known as ...
to ...

about 200 yds
down to ...
and up 20 ...

N 32 3/4 W

N 31 1/2 W
3 miles

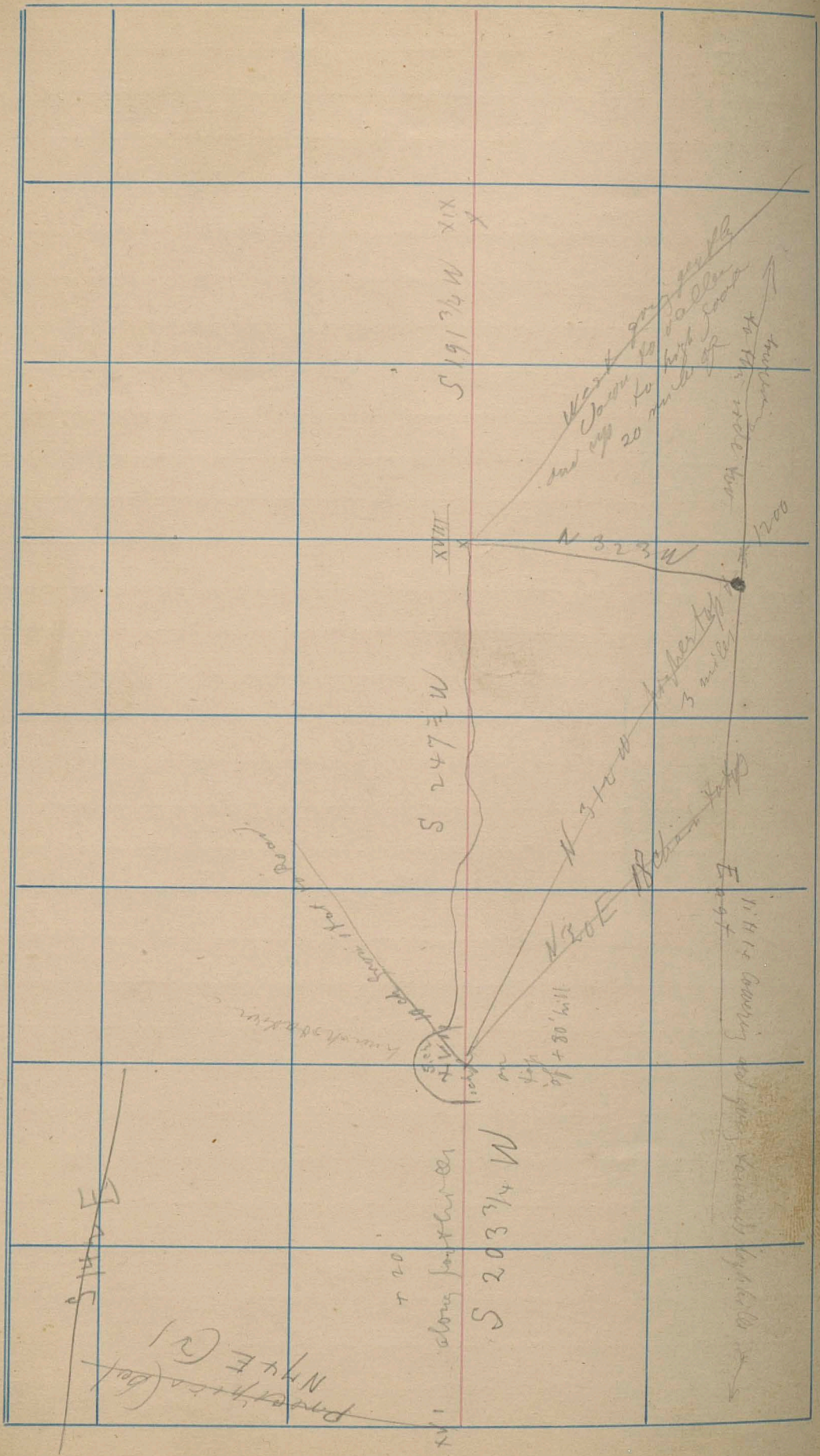
N 30 E

11415

11415

11415 ...

200



XIV

+100
Mesa irregular

S 265 W
56

S 354 W

XXIII

X 500

XXXX

+ 50 Mesa
S 255 W 1/2

S 265

XXII

XXI

10 ft
center

+ 50 Mesa

S 234 1/2 W

248

~~248~~

S

XIX

Mesa + 150

* Turn over to other side

Ranaka Taron
50-60
Corner

* N 344W

xxvi

N 74E

Direct of road

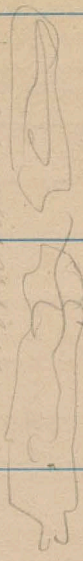
Corner

xxv

S 250W

xxv

Perkuvash Pond

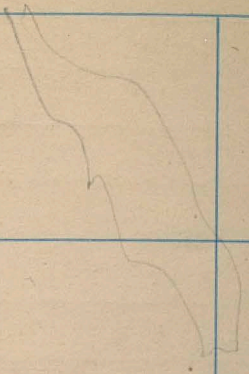


xxvii

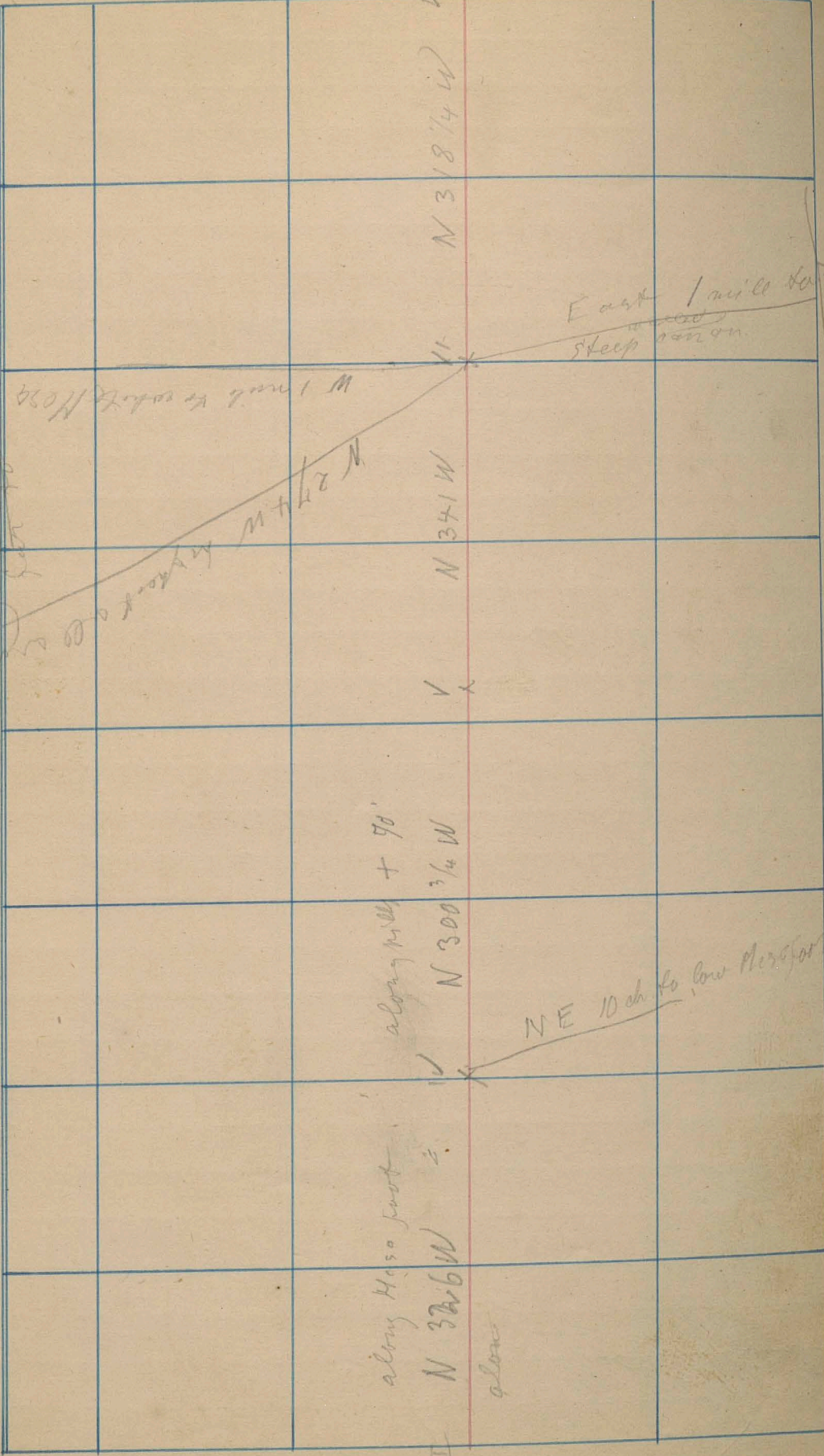
N 345W

N 353W

xxix



N 34 1/2 W 1500 ft
N 34 1/2 W 1500 ft
N 34 1/2 W 1500 ft



W 1 mile to south of Mesa

N 27 1/4 W 1/2 mile to south of Mesa

East 1 mile to steep canon

along hill + 90'

N 300 3/4 W

NE 10 ch to low Mesa foot

along Mesa foot

N 32 1/2 W

along

III

Mass SW

N 336 ³/₄ W

VIII

VIII

N 326 ¹/₂ W

IX

N 345 ¹/₂ W

X

N 337 ¹/₂ W

XI

N 307 ¹/₂ W

XII

Road up hill

Stations relative
ground.

XII

XI

X

IX

VIII

VII

VI

V

IV

III

II

I

XIII

± 100'

N 350W

N 289W

N 289N

N 101W

N 301N

N 211

N 27 3/4 W

N 218E

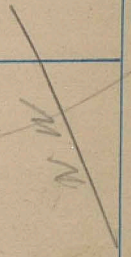
going through hills + 150'

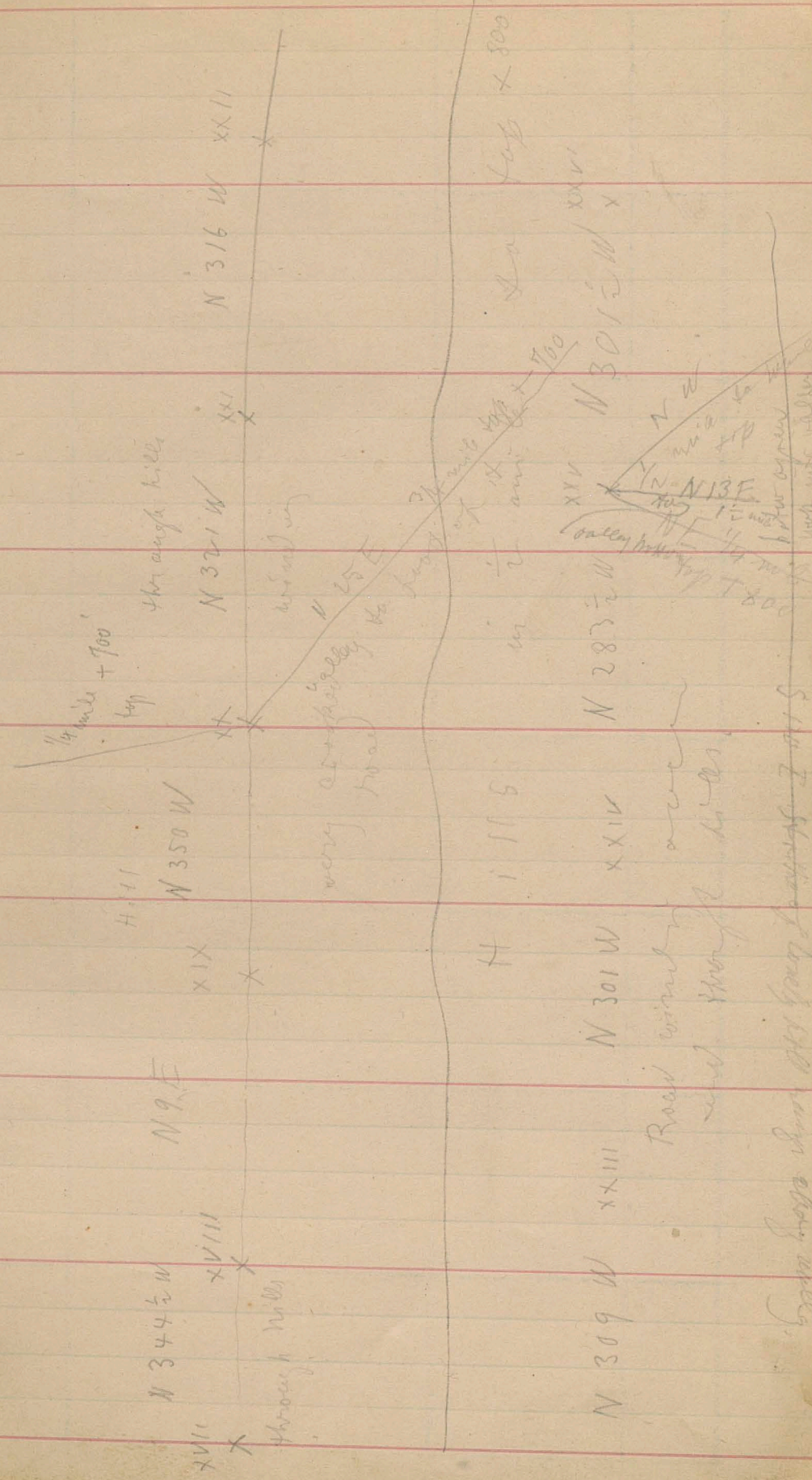
stream involving over 1000 feet

~~grad 16 down 3/4 to top~~
~~1 1/4 to top~~
~~high next 10 min. (at 12)~~

N 30E

3/4





EN

with water level
to Mesa green bottom
S 128 E
step of only
well

Camp

Small Hoop
on top of hill
On foot of Mesa
Mesa hills
to top of hill
to top of hill

S 263 W strike
1/4 mile from
330 SE

S 216 W
S 204 W
S 206 W

Beaver from east of
near Pahrump to Camp

N 20 E
height of 11550

Bus

Flacke Mine
1/4 mile
noted in Hoffman's
Map
Town
noted Blag
to Mines
Springs

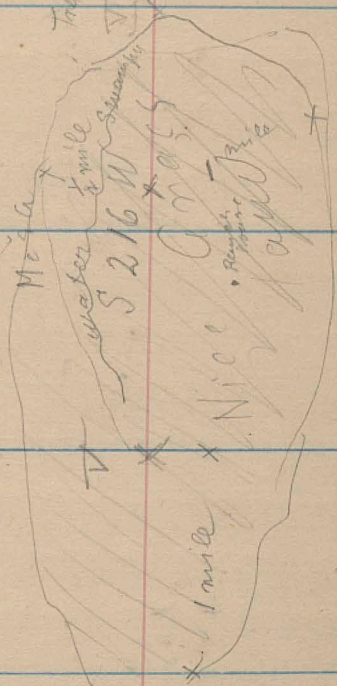
S 19.3 W

N 28 W

Line

to top of

N 75° E strike towards the west
 S 90° E strike in water to the east
 S 90° E strike in water to the west
 S 90° E strike in water to the east
 S 90° E strike in water to the west



Stopped an entrance of canyon
 as we learned that it ought to be
 impassable for our camps.

The station

196° W

Start near
 extent which
 more of the
 after the
 before the
 Start on dry
 foot of Moja

3/4 mile to Moja just
 on foot of high hills

IV

III
+ 60'
Mesa

500'
Mesa + 80'

S 109 1/2 E

N 88 1/2 E

II

+ 150'

along foothills

S 101 20 E

pretty straight

mile to Mesa Jct.

N 90 E

I

+ 150

Spot
Foothills

S 154 1/2 E

+ on
foot
hills

Camp
x

at foot of bank + 200

~~N 77 E~~
76
~~N 76 E~~

+ 50 rocky steep

S 126 1/4 E

X

Narrow Indian white
Canyon going up
hill

+ 50

S 137 E

X

XI

S 162 1/2 E

XII

S 169 E XIII

all the way on above
+ 100 hills

S 113 1/2 E

XV

XVI

S 138 1/2 E

XVII

S 95 E

XVIII

S 141 E

XIII

+ 100 hills
and cliffs.

2 miles

S 212 W
Top

1000 ft
S 232 W
last high top

NW

3.00 at the foot of 100
irregular shaped hills.

18 chasms

5194M

S106E
xxx
S137E
xxx
S131E
xxx
S100E
xxx
S125E

S125E

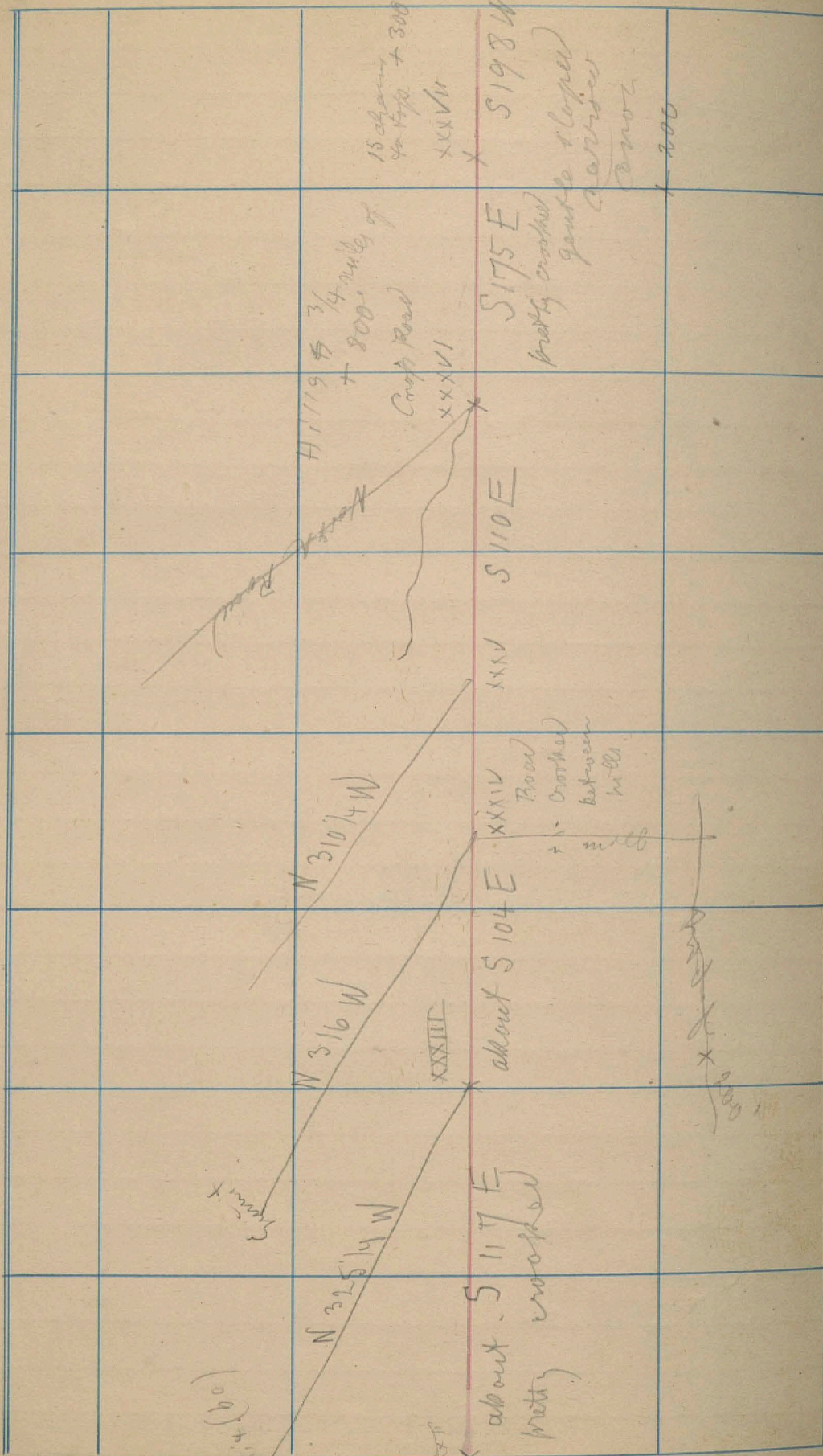
S 258 W 20 miles

808 +
800
N 80 E

SW 1/4 mile other quartz.

VIII
xxx

1/4 mile to top + 600



S 100

N 325 1/4 W

about 5117 E
pretty crooked

N 316 W

XXXIII
about S 104 E

N 310 1/4 W

XXXIV
Road
between
wells
mill

XXXV

S 110 E

H 1119 + 3/4 mile of
+ 800
Crop Road

XXXVI

S 175 E
pretty crooked
gentle sloped
narrow
canyon

XXXVII

S 198 W

15 about
40 top + 300

S 100

slow and no gully

4.115-140

down very + 200

road

run

X #

S 165 E

XL

S 140 E

4/2 XL

120

X

S 170 E

X

S 165 E

X

S 49 E

XL

V 16

S 129 E

X

X

X

X

X

gentle slopes including

gentle slopes

both sides

12 ch X

4.00

XL

+ 100'

+ 300'

S 250 W of top of hill + 1000'

S 110 W of top of hill + 300'

watering hole

lighter ground

map of the area

Camp
at
Clover Valley

Road pretty crooked

backside S 142 3/4 E

steep

S 145 3/4 E

(old S 146 E)
corner
with
width

+ 250'
S 136 3/4 E

Typical
crooked
through
narrow gulch
signed above
+ 150

II

Start
on
NW

2425

gentle slope
+
S 145 3/4 E

200 +

X

S 142 3/4 E

West

200

1 mile
to foot steep + 300

S 156 3/4 E

III

S 136 3/4 E

II

S 145 3/4 E

S 142 3/4 E

S 156 3/4 E

S 156 3/4 E

III

S 136 3/4 E

II

S 145 3/4 E

S 142 3/4 E

S 156 3/4 E

S 156 3/4 E

III

S 136 3/4 E

II

S 145 3/4 E

S 142 3/4 E

S 156 3/4 E

S 156 3/4 E

III

S 136 3/4 E

II

S 145 3/4 E

S 142 3/4 E

S 156 3/4 E

S 156 3/4 E

III

S 136 3/4 E

II

S 145 3/4 E

S 142 3/4 E

S 156 3/4 E

S 156 3/4 E

III

S 136 3/4 E

II

S 145 3/4 E

S 142 3/4 E

S 156 3/4 E

S 156 3/4 E

III

S 136 3/4 E

II

S 145 3/4 E

S 142 3/4 E

S 156 3/4 E

S 156 3/4 E

III

S 136 3/4 E

II

S 145 3/4 E

S 142 3/4 E

S 156 3/4 E

S 156 3/4 E

III

S 136 3/4 E

II

S 145 3/4 E

S 142 3/4 E

S 156 3/4 E

S 156 3/4 E

III

S 136 3/4 E

II

S 145 3/4 E

S 142 3/4 E

S 156 3/4 E

S 156 3/4 E

III

S 136 3/4 E

II

S 145 3/4 E

S 142 3/4 E

S 156 3/4 E

S 156 3/4 E

III

S 136 3/4 E

II

S 145 3/4 E

S 142 3/4 E

S 156 3/4 E

S 156 3/4 E

III

S 136 3/4 E

II

S 145 3/4 E

S 142 3/4 E

S 156 3/4 E

S 156 3/4 E

III

S 136 3/4 E

II

S 145 3/4 E

S 142 3/4 E

S 156 3/4 E

S 156 3/4 E

III

S 136 3/4 E

II

S 145 3/4 E

S 142 3/4 E

S 156 3/4 E

S 156 3/4 E

III

S 136 3/4 E

II

S 145 3/4 E

S 142 3/4 E

S 156 3/4 E

S 156 3/4 E

III

S 136 3/4 E

II

S 145 3/4 E

S 142 3/4 E

S 156 3/4 E

S 156 3/4 E

III

S 136 3/4 E

II

S 145 3/4 E

S 142 3/4 E

S 156 3/4 E

S 156 3/4 E

III

S 136 3/4 E

II

S 145 3/4 E

S 142 3/4 E

S 156 3/4 E

S 156 3/4 E

III

S 136 3/4 E

II

S 145 3/4 E

S 142 3/4 E

S 156 3/4 E

S 156 3/4 E

III

S 136 3/4 E

II

S 145 3/4 E

S 142 3/4 E

S 156 3/4 E

S 156 3/4 E

III

S 136 3/4 E

II

S 145 3/4 E

S 142 3/4 E

S 156 3/4 E

S 156 3/4 E

III

S 136 3/4 E

II

S 145 3/4 E

S 142 3/4 E

S 156 3/4 E

S 156 3/4 E

III

S 136 3/4 E

II

S 145 3/4 E

S 142 3/4 E

S 156 3/4 E

S 156 3/4 E

III

S 136 3/4 E

II

S 145 3/4 E

S 142 3/4 E

S 156 3/4 E

S 156 3/4 E

III

S 136 3/4 E

II

S 145 3/4 E

S 142 3/4 E

S 156 3/4 E

S 156 3/4 E

III

S 136 3/4 E

II

S 145 3/4 E

S 142 3/4 E

S 156 3/4 E

S 156 3/4 E

III

S 136 3/4 E

II

S 145 3/4 E

S 142 3/4 E

S 156 3/4 E

S 156 3/4 E

III

S 136 3/4 E

II

S 145 3/4 E

S 142 3/4 E

S 156 3/4 E

S 156 3/4 E

III

S 136 3/4 E

II

S 145 3/4 E

S 142 3/4 E

S 156 3/4 E

S 156 3/4 E

III

S 136 3/4 E

II

S 145 3/4 E

S 142 3/4 E

S 156 3/4 E

S 156 3/4 E

III

S 136 3/4 E

II

S 145 3/4 E

S 142 3/4 E

S 156 3/4 E

S 156 3/4 E

III

S 136 3/4 E

II

S 145 3/4 E

S 142 3/4 E

S 156 3/4 E

S 156 3/4 E

III

S 136 3/4 E

II

S 145 3/4 E

S 142 3/4 E

S 156 3/4 E

S 156 3/4 E

III

S 136 3/4 E

II

S 145 3/4 E

S 142 3/4 E

S 156 3/4 E

S 156 3/4 E

III

S 136 3/4 E

II

S 145 3/4 E

S 142 3/4 E

S 156 3/4 E

S 156 3/4 E

III

S 136 3/4 E

II

S 145 3/4 E

S 142 3/4 E

S 156 3/4 E

S 156 3/4 E

III

S 136 3/4 E

II

S 145 3/4 E

IV S 169 E

+100

V

cracked road
very sandy through
hills +200'

S 170 E

through very cracked

VI

Very cracked
road through
rocky canyon

S 138 3/4 E

+100

very sandy slope

2 1/2

S 231 W

+80

very narrow

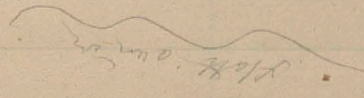
cracked rocky
road

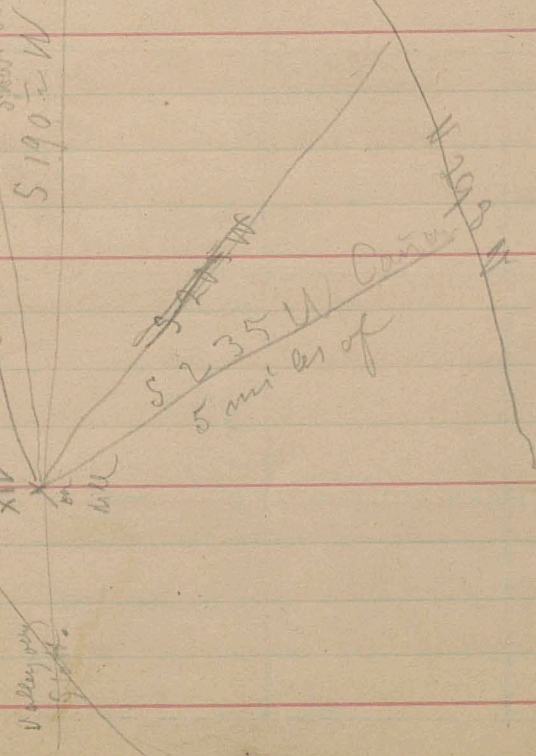
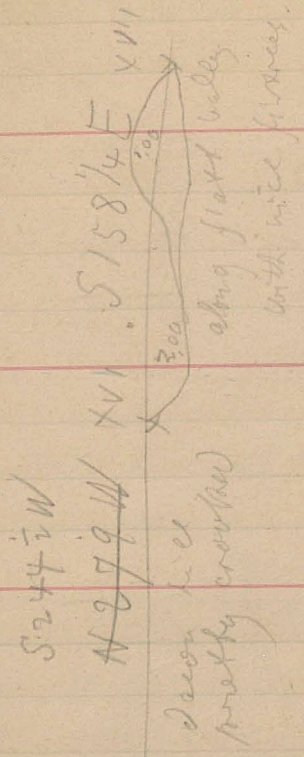
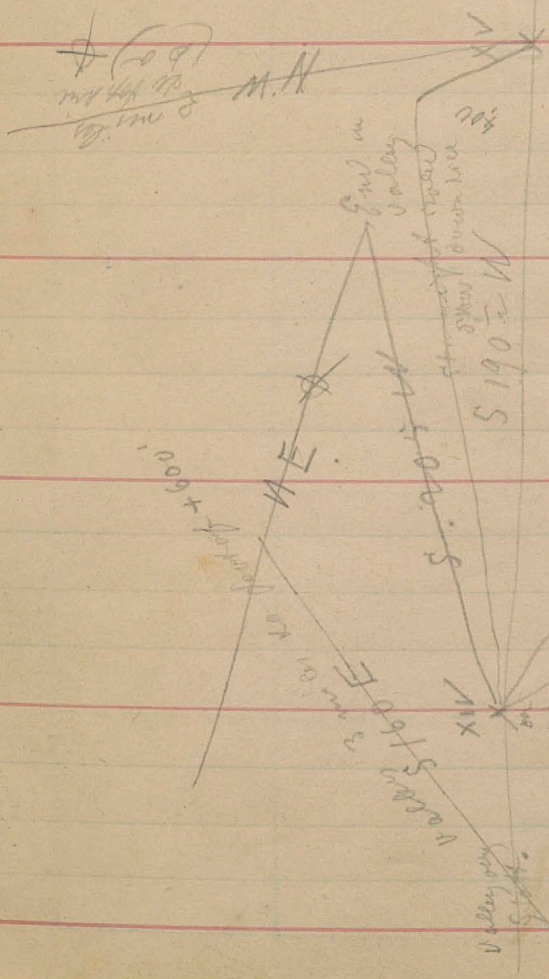
VIII

S 204 1/2 W

IX

West
+800'
1/4 mi to top line





cut of +150 pth gate

Behan's

Sandy bottom

S. 170° E

In spring a river
flows up the ground
(timber wind)

XVIII

S. 130° E

valley about 600 wide

7200

E

XIX

N. 27° W

S. 151° E

crest of
Mesa

along foot of Mesa

X 30

+ 100

S. 240° W
+ 1000

S. 265° W
+ 900'

+ 150'

XXXX

road

S. W. 1/4 mile
to top line

N. 20° W. 1/4 mile
+ 300

XXXX

S 214° 20' W

XXXIII

S 223 W

on
shaly
01/38

+ 800 feet

XXXII

S 263 W *

+ 1000

N 286 W *

"narrow canyon
very bad road.
steep slopes

+ 1000'

+ 800'

pretty

S 266 W x

narrow
canyon
very
steep
bad

+ 800'

steep

N 273 W

xxxv

S 297 W

xxxxi

S 168 E

vii

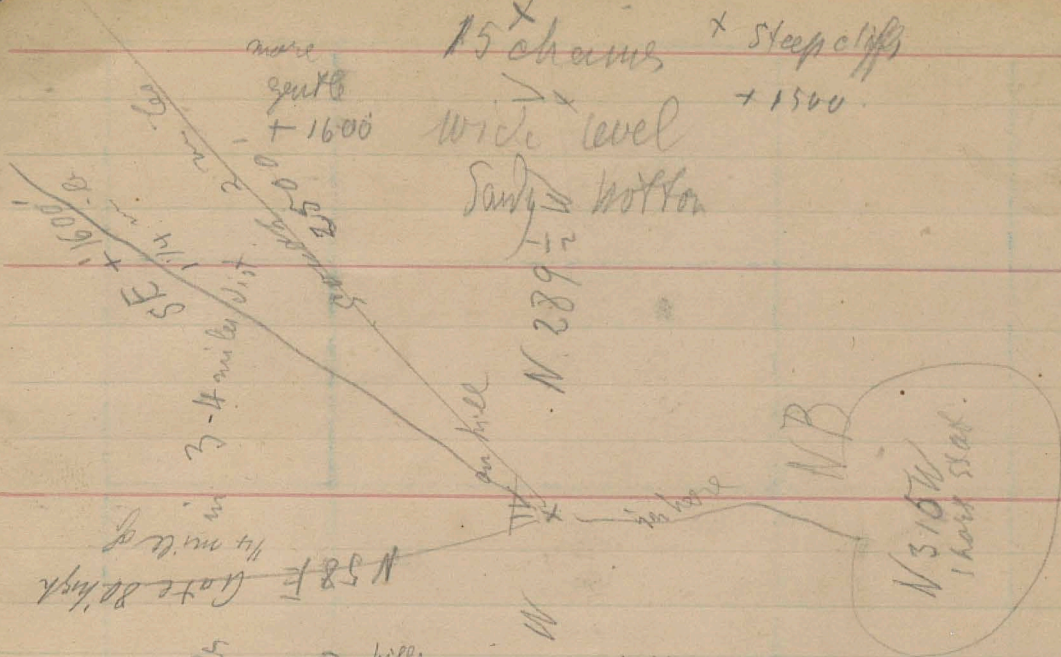
S 246 W

xxxiii

800 - 1000 hrs

Stopping place

800 - 1000 hrs



High hills
 and higher rounded top about 1000
 hills + 1000
 Hills
 + 300
 S 181 W
 S 203 W
 steep cliffs
 + 700 - 300
 steep cliffs
 steep cliffs
 II X
 III X

Stop place
 X S 256 1/2 W
 steep slopes
 very rough road wide
 over ravine
 low for hills NW 3/4 miles + 900' top
 2 ch. bottom
 + 600 hills rounded top
 S 230 W
 steep hills
 and higher rounded top about 1000
 hills + 1000
 Hills + 300

No reading of recorder.

~~1111~~
E 150 S

~~1111~~
M 681 S

Rocky (Recessed)

900'

1111
Creek
Scarp

N 298 W

Line of valley
center of
in white

M 772 S

Exit of
road

with 900'

1500'

W on W

MS
on scarp
down

Sim. Can tops

Sim. Can tops

M 852

Road very
sandy
marked with

~~1111~~
M 822 S

Valley Road work

Steep
Cliffs

N 752 W

~~1111~~
1111

2:30
N 33 E
+ 2000'

New higher W. boundary
+ 1200'

5000
5158 E

Entry
cont.
+ 1200'

one side water again

XV
S 177 E
XVI

S 143 E

to corner or
10 ft
cont.

+ 900'
1000'

+ 300' steel
+ 2000' steel

XIV

S 170 E

to end of
cont.

XIII

Pyromorphite + 1800'

N27 E

5414 + 1000 cliff

1500 - 2000'

quartzite shales

Narrow

Little S

M 90° W

turning up + 50'

Worm mountains + 80' 1/2 chert

up

steep S

S 177 E

+ 1117'

narrow schales

about to show energy

M 76 1/2 S

H 1116' sea + chert

highly fossiliferous in irregular shape

+ 1600'

XIX

S 198 3/4 W

XX

S 110 E across W. side

XXIX

S 265 1/2 W

XXVIII

S 207 1/2 W

~~13 days~~

XXVII

S 232 1/2 W

Narrow

19 chosen bottom

on this side

between gulches deeper

on the gaped and steep
with a more gentle foot

Side corner
Packing hole

Deep gaped tops + 1500'

XXVI

S 206 1/4 W

ass +

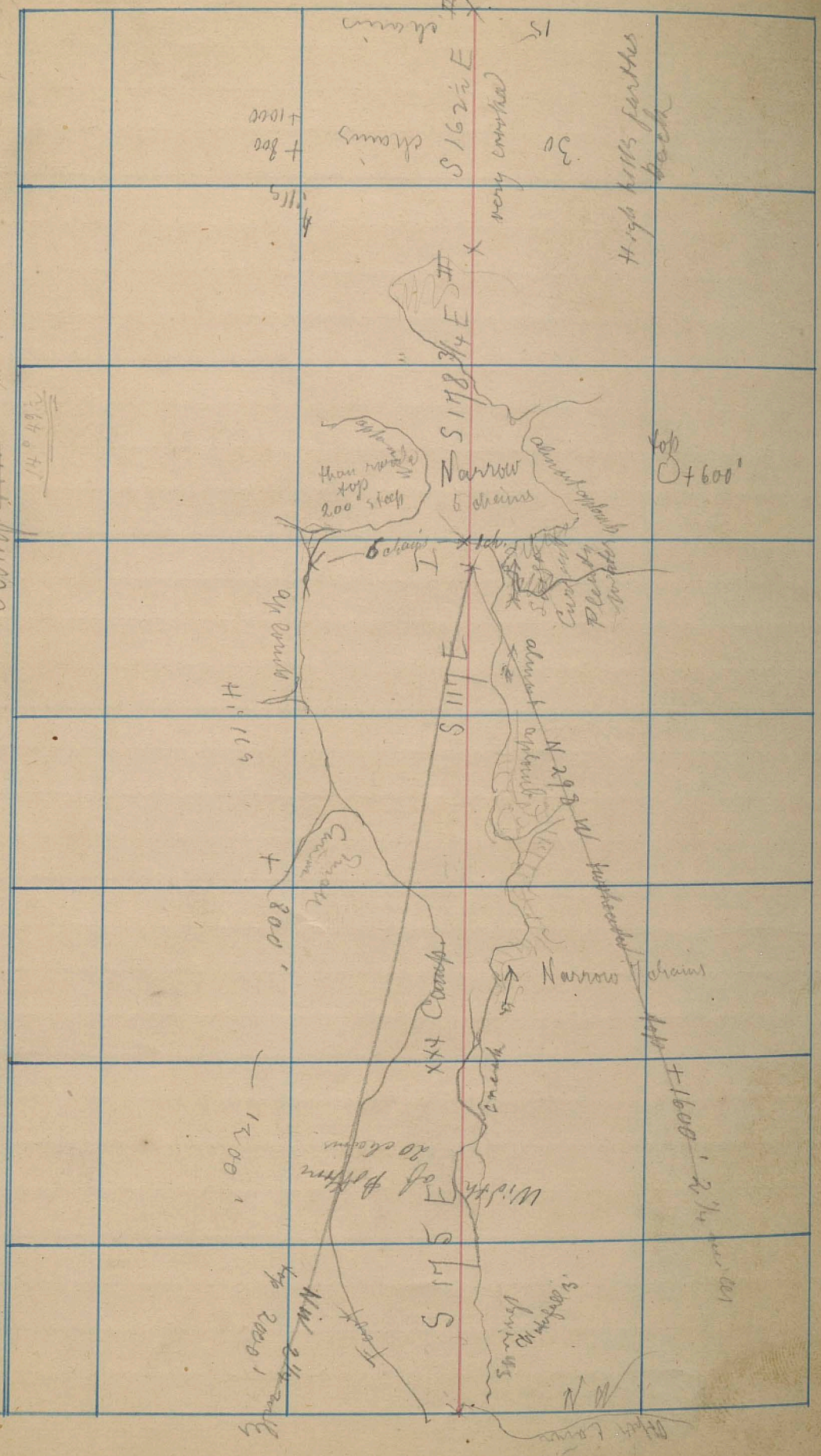
with

10 ft

X

Camp VIII in Harmon Canyon (Long Valley)

14° 49' N



+1000
+800

Hills

+800

1000

Top 2000
Narrow 2 1/4 miles

Hills
+1000
+800
S 162 1/2 E
very crooked

S 178 3/4 E

S 177 E

S 175 E

15
30

High hills further back

Top +600'

+1600
2 1/4 miles

Width of bottom
20 chains

Spring
down 1/2

Next town

Shade of North bearing
Elevation

164.028
149.045
14.983

400 ft of grade
Height 600
200'

Deserted Ranch
Stagnant water 300 ft

30 ch to foot of
gentle slope + 500

S165 1/2 E

down

braking across
30

IV

S171 3/4 E V

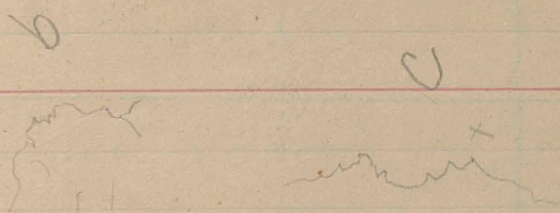
V

S162 E 30 1/2

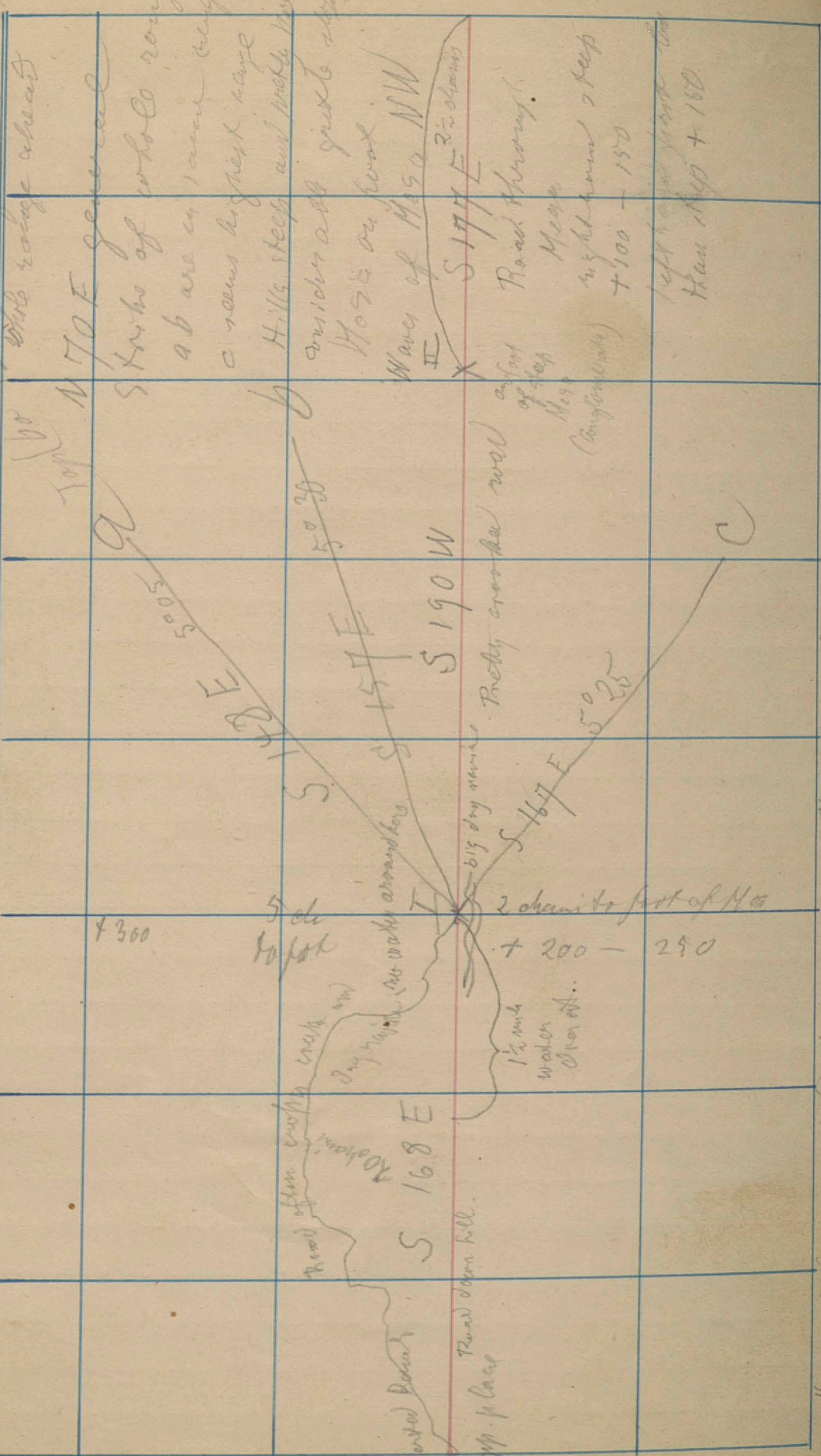
S168 1/2 E
right hand of double
30 1/2

S157 E Top 15 mi W of
30 10

Deserted Ranch



S 111 E strike of single
 2 or 3 feet out of which about 10
 feet range ahead



At mile before reaching S 101 I valley about 1/4 mile wide.

Start on Foot of 50.

12 days

8 hours 40 steep cliffs
+ 150'

Summit 11 5215 W running down

+ 100'

100'

S 23 7 1/2 W

S 24 3 3/4 W

V X

S 19 1/2 W

W X

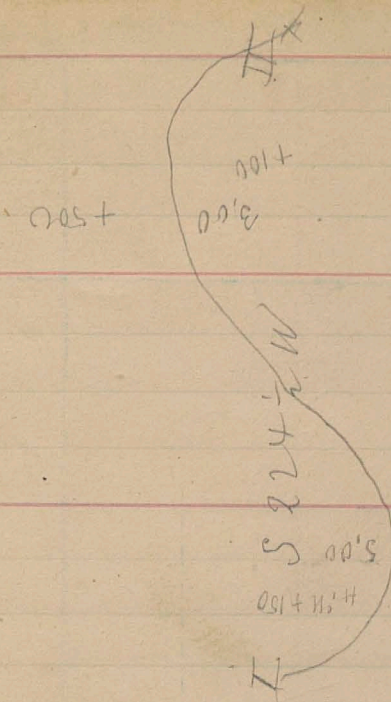
Corner below double looking S 5 1/2 = 151. X

S 20 3 3/4 W

Road in wide sand
Garrison

~~Survey S 147 E 1/2~~

III

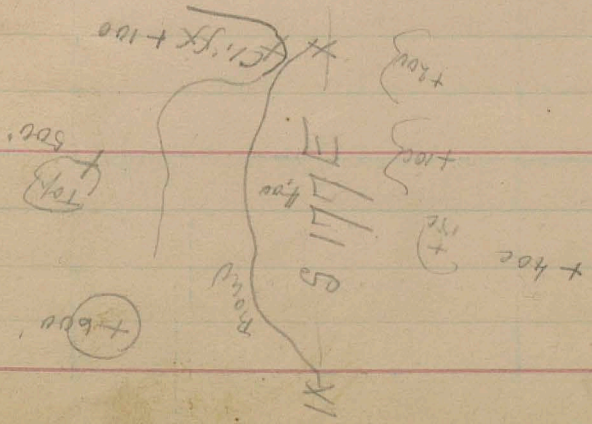


165° 46'
 137° 02'

 28° 44'
 14° 44'
 10° 44'

Stop place
 near spring.

M 615 S 197 W
 x
 O



2274 2274

Narrow Canyon

S 219 W Na S 169 E D

S 157 E IV

III

S 198 W

IIa

N 280 W

II

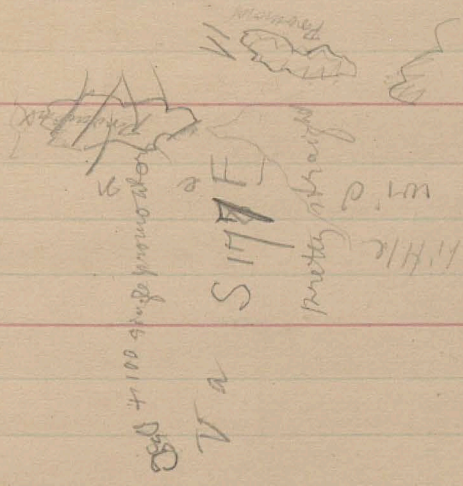
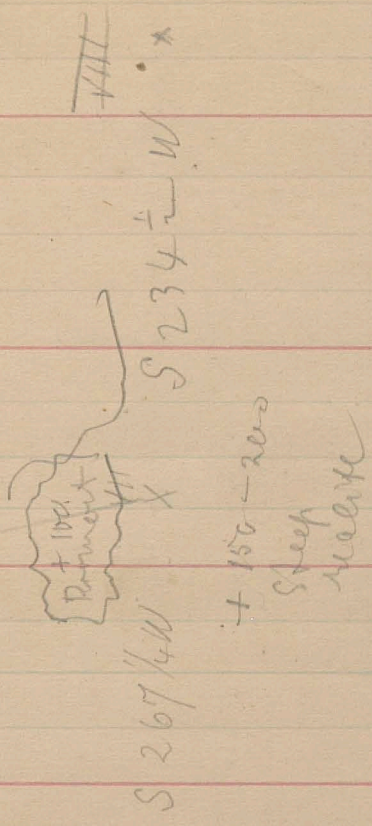
15' - 20 diam wide.
partly wet partly sand
stone

251 - 201 + 100 - 150

158 - 200 +
1 m
glac h. m. 1 m
glac h. m. 1 m

S 146 E strike

East to high mountains
A water

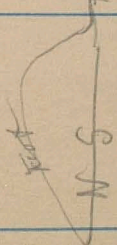


200 + 100 sheep meadow

V S 228 W
 S - 5 sheep
 meadow
 very crowded

S151E

300 ft from top of slope



300 ft steep slope
on hill
over
X hanging rocks

+ 300-400

gravelly slopes

S 194 3/4 W

10 ch wide + 150

iron very eroded

7400'

S 164 E

Small
creek
flowing
up
the
hill

X

S 205 W

800 ch

~~S 173 E~~

25 ch
the
foot

300 ft from top of +400
more
refined

300 ch
the
foot of +400

300 ch
the
foot of +400

300 ch
the
foot of +400

300 ch
the
foot of +400

300 ch
the
foot of +400

300 ch
the
foot of +400

300 ch
the
foot of +400

300 ch
the
foot of +400

300 ch
the
foot of +400

300 ch
the
foot of +400

300 ch
the
foot of +400

300 ch
the
foot of +400

300 ch
the
foot of +400

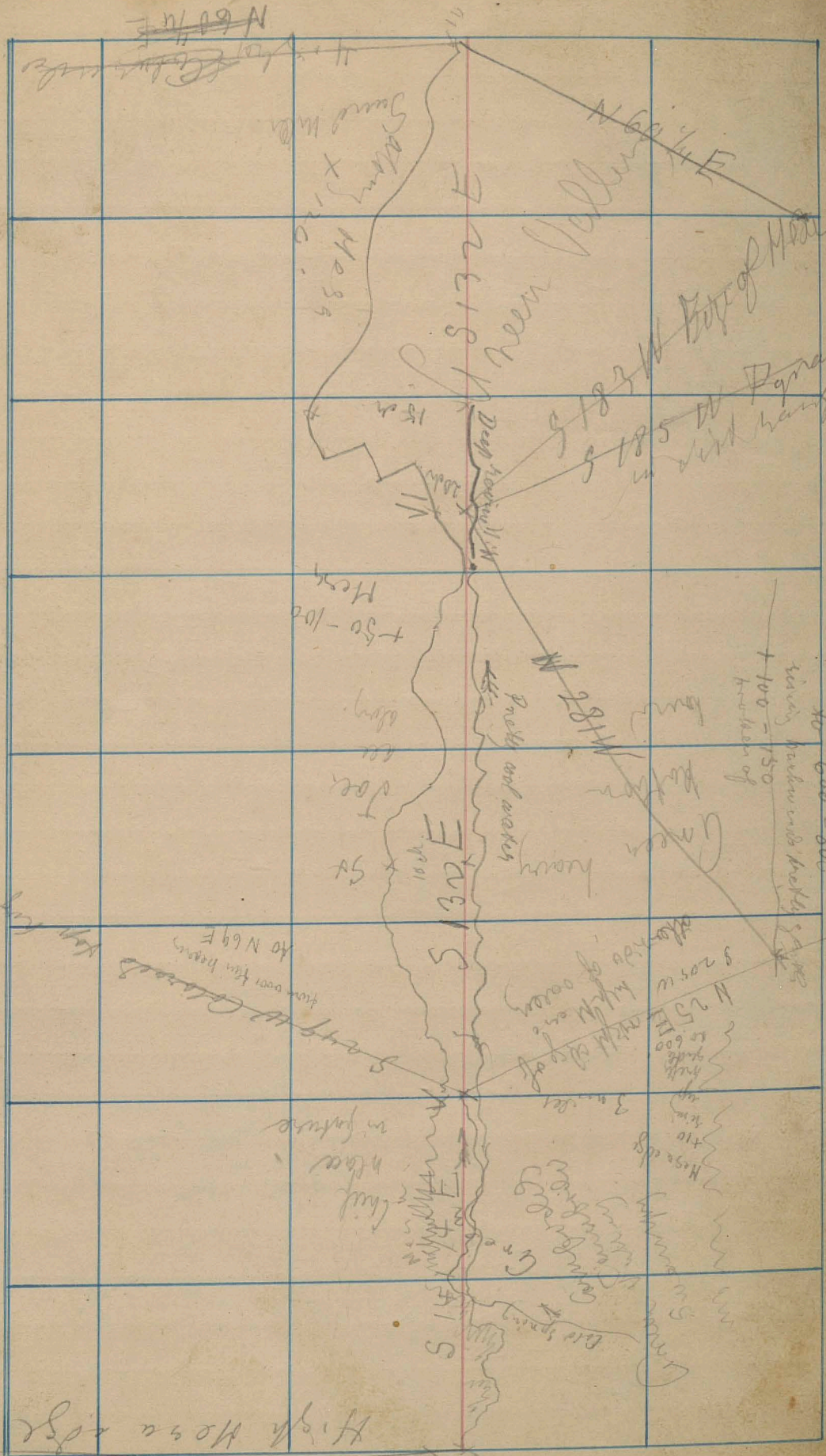
300 ch
the
foot of +400

300 ch
the
foot of +400

300 ch
the
foot of +400

+400
the
foot of steep 10 ch

with more on top
quite foot



S 215 W

High Mesa edge

from over the beam
to N 69 E

Keep looking back

to 600-800
having broken into blocks
+ 100 - 150
formation of

N 25 E
50
600
hill
3 m. set
Horse edge
100
110
120

+ 50 - 100
Hess

N 28 W

N 60 W E

Sinking
Mesa
x 120

Green Valley

Deep Canyon

N 82 W Edge of Mesa
S 185 W
in wind range of

Green heavy
Pools and water

Doe
100
101
102
103
104
105
106
107
108
109
110
111
112
113
114
115
116
117
118
119
120

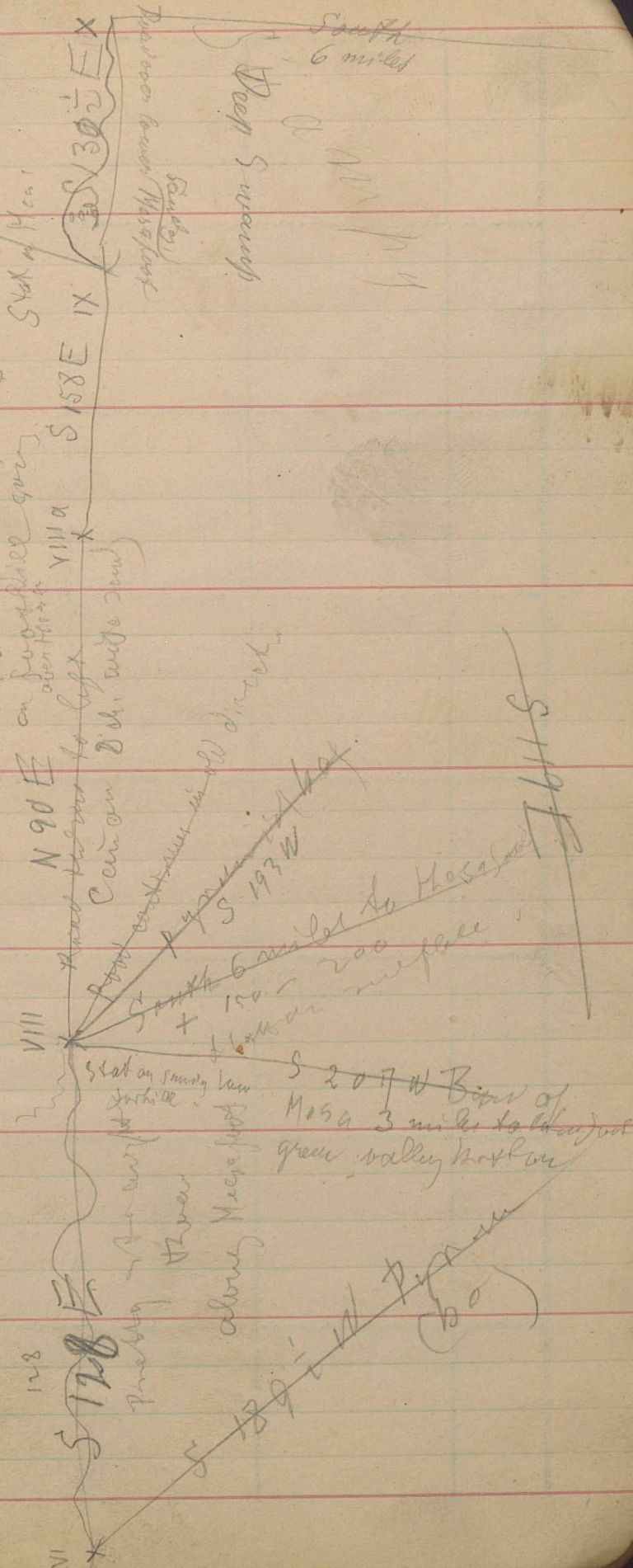
Hot Spring

100
110
120

High Mt range before obs.

1 mile to High House!
the old road through mountains
S 110 E T of High House
S 110 E T

clear thin swains
N 90 E on sandstone
about 1000 ft



Badger Canyon
Sandy
Masselot

South 6 miles

VIII
VIII a

Hard to see to left
Canyon Ditch wide road

Point east in old ditch
S 193 W
+ 150 - 200
mesa surface

stat on sandy tan
in hole

pretty -
River
along mesa foot

S 207 W Base of
Mesa 3 miles to mesa
green valley below

S Valley
Campground
in basin
St Thomas

S 143 3/4 E

16.0
+ 200 m

Steep slope

120 to 140 + 120' g.c. to
1' from top

S 127 3/4 E

XI

15.0
+
Steep slope

200 m
to Mesquite

W side of road
S 127 3/4 E
Swampy
Ditch
Mesquite

5 miles
S 247 W on other
side of valley
scattered Mesquite
and: Mesquite

to Staples
at night

XV

S 123 E

XVIII

S 162 E

XVII

N 73 E

XVI

S 162 E

XV

N 73 E

XIV

S 162 E

X

town

X

S 162 E

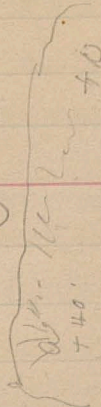
N 73 E

XVII

S 162 E

XVIII

S 123 E



Corner
of
town

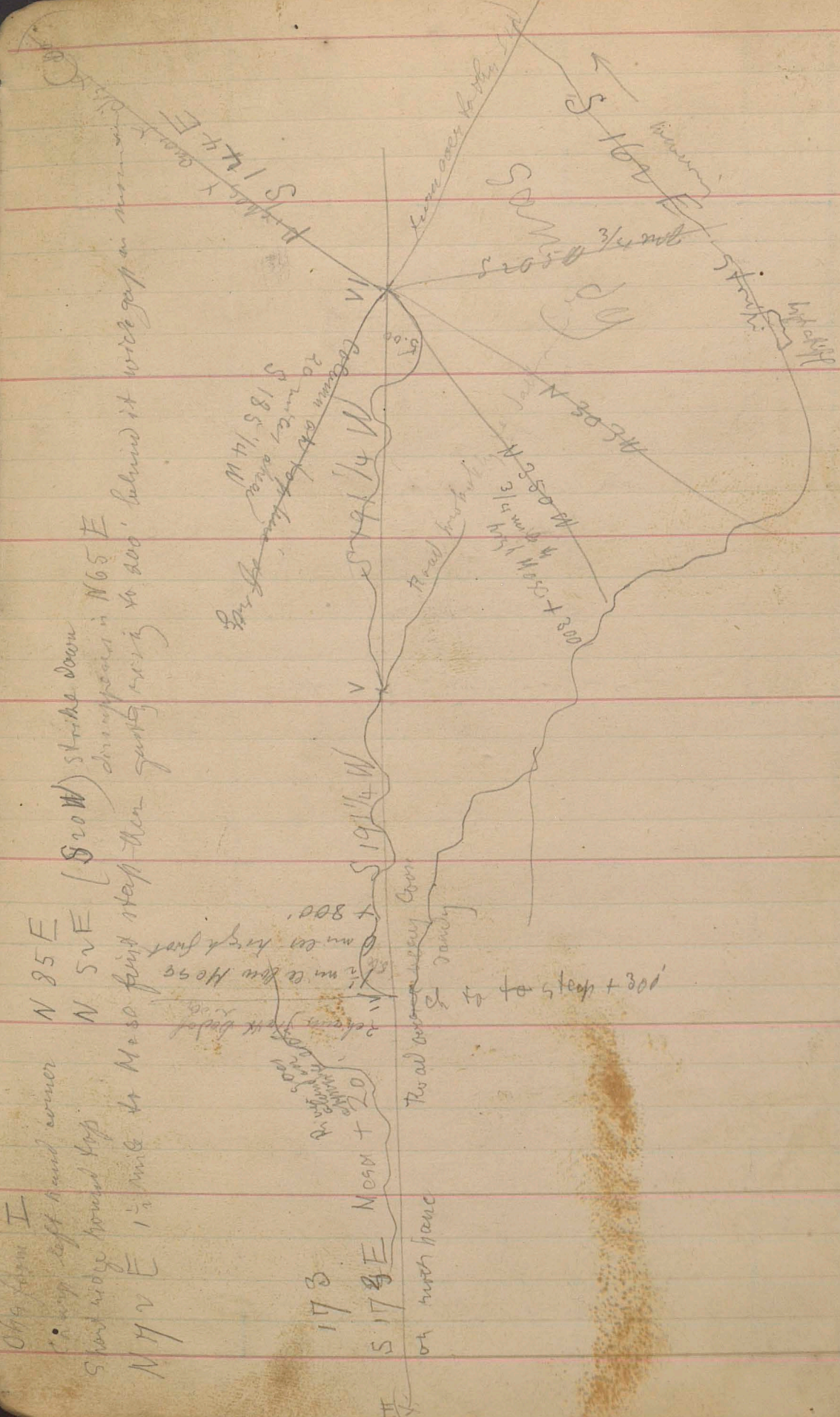
Corner
in
town
boundary

Corner
of
street

Old farm I
A very soft sand corner
Start wide toward top

N 72 E 1 1/2 mile to Mesa first stop then
N 52 E (S 20 W) strike down
N 85 E disappears in N 65 E
to 200' behind it will gap in narrow
Dike

173
S 17 2/3 E Mesa + 20
at north fence
Road corner
St. Ranch
Ximera low Mesa
Dumca high first
+ 800'



M 74, S 81
S 185 1/4 W
from corner to the top
Mesa

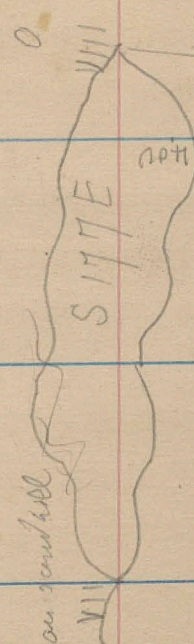
S 16 1/4 E + 100
S 20 W + 300 + dip 3/4
S 19 1/4 W + 300 + dip 3/4
S 19 1/4 W + 800
S 19 1/4 W + 100 + dip 5 of 4
S 17 2/3 E Mesa + 20 at north fence

1/2 mile
to Vora Mega
+ 100
on port of it
Dingpu river

1/2 mile
to Vora Mega

S 260 W
to right middle
to left 8 tenths down
(to yesterday)
level - sandy. 1 1/4 mile to Mega
+ 200

Commenced
in morning



1/4 mile to here Mega

3/4 mile to here Hore fort

300

S 156 E

V

On the way
IV
Wagon
Kearney

S 184 W

Colville Road (2)

III
1500

S 184 W

Dist. Puyallup
Gap
S 218 in W
N 300 W

Red ridge
3 1/2 miles
west of prominent end of

800 to low height
1 1/2 miles to right + 300
from Mesa different top

3 miles
to Me as foot
of high hills

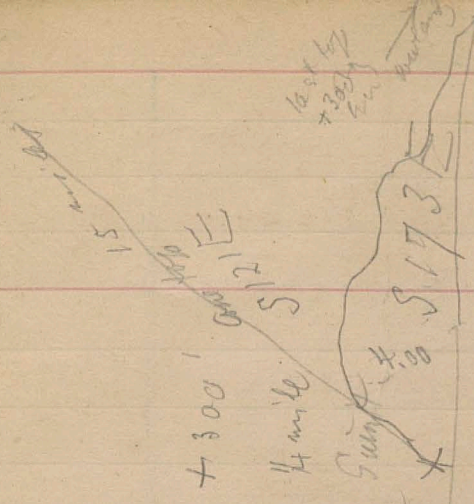
Need S 115 E
must be dist. from
2

N 280 W
to (2) Prominent
Said in West to right
about 7 miles of slope

line shows in 2 lines

1000
800
S 184 W

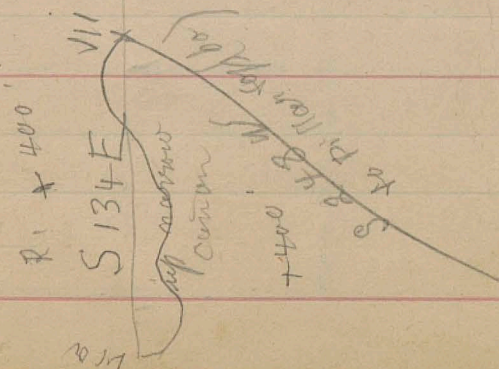
IV



+300'
 4 mile
 S 162 E
 Mostly straight
 up hill shown
 narrow center
 2 sided
 +300'

+100
 mostly wooded
 S 105 E
 IX
 rocky hills
 +100

S 144 E
 VIII



R 1 + 400'
 S 134 E
 up narrow canyon
 S 148 W
 to Pillar top
 4400

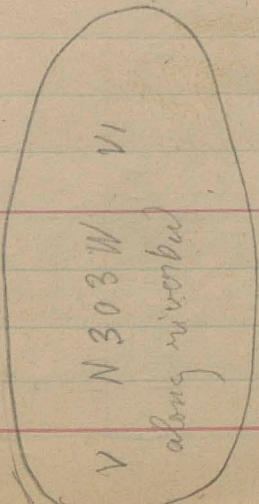
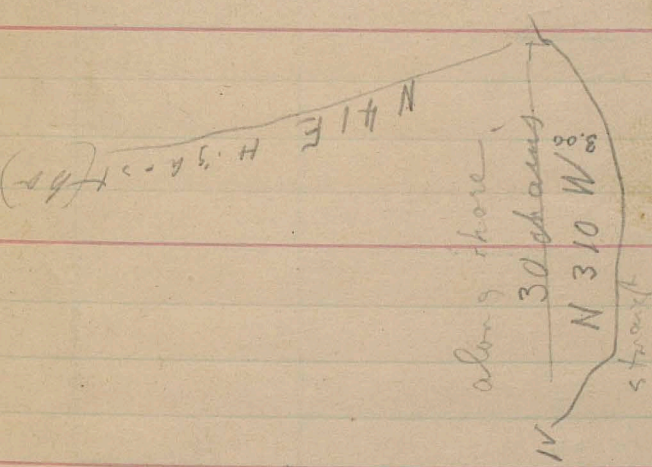
Handwritten note: *Handwritten note*

N 282 W VI
X
up Wash/Carson
3 chains and 4
study burrows

31 1/4
57

88 7/8

N 295 W
ford 2 miles 2



Pinney 8.00

XAN

212

S

XI

S 246 W

Calum Mebra

along sandy
low water shore

S 190 W
down in wash

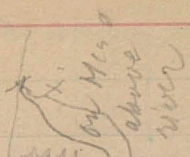
XIX

S 180 W

XIII

Road towards Mebra

150 yds
away



Drawing Heavy river

800 ft above
 + 150 ft
 very good
 (100) by
 Mebra

S F
 Mebra
 Mebra

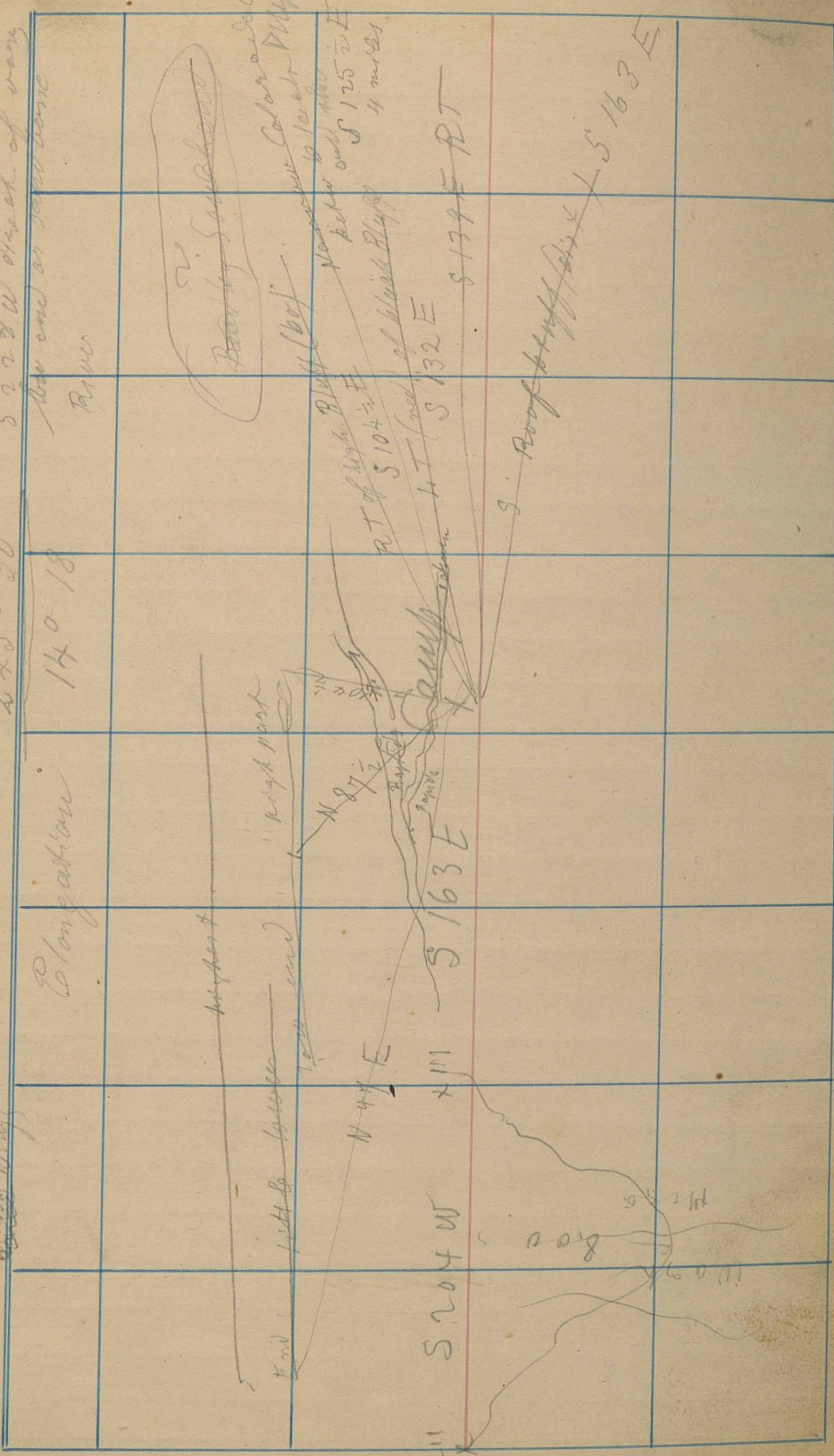
S 126 E
 more dirt hill

S 149 E
 end of stream

~~Black Bluff~~
Cochon

2.59048
2.45030

Black Bluff is a lonely hill
S 22 W direct of way
the end or sandstone



Companion
140-18

highest

with part

N 44 E

N 44 E

S 204 W

S 163 E

S 132 E

S 179 E

800

500

1000

S Roof bluff
S 163 E

~~Nearby South end~~
Color and Cont.

Bluff

RT of high Bluff

How far to reach
Ketchikan S 125 E
4 miles.

Camp on mostly 6-8 oblong units
sometimes 10 small subcon. Cts

1/3 + 400 Mesohills
with 1/3

Camp N 274 1/2 W

N 290 W I
N 284 W Ia

Camp on all hills + 150 ft
along E

very productive
+ 200 hills
S 261 W II

3 miles
S 176 E
Typ + 800'

S 270 W
N 295 W IV

fair good Mesa
to mile into Vegas
West

S 245 W V
S 245 W + 500'

1200 - 1400
brnly, brnly

N 275 W
S 223 W VI

S 228 W
S 228 W & 223 W

S 208 W
S 208 W

gently sloped + 150
S 105 E
Hem. zone

down to and
from valley
S 105 F
S 250 W X

to 1/2 mile
from top of
S 250 W X

S 223 W
S 223 W X

S 219 W
N 341 W

S 209 W
N 341 W

Priddy Straight
Road

to 1/2 mile
from top of
S 250 W X

to right hand foot
of valley
Copper through
Cane Tool and S 208 W

to 1/2 mile
from top of
S 250 W X

to 1/2 mile
from top of
S 250 W X

to 1/2 mile
from top of
S 250 W X

to 1/2 mile
from top of
S 250 W X

to 1/2 mile
from top of
S 250 W X

to 1/2 mile
from top of
S 250 W X

Wagon station on Green's track X

How the ridge + how going up the cañon and of which we saw.

Big Mts X

