

8/31/93
Battle Mtn.

Memorandum

To: Shoshone-Eureka 4370 Files
Through: Wayne King
From: Valerie Dobrich
Subject: Summer 1993, Wild Horse Census/Distribution Flights
Date: August, 1993

The 1993 wild horse census and distribution flights for the SERA were completed on August 20, 1993. Census maps are filed in the appropriate HMA binder in the RA wild horse office. Attached to this memo are copies of the OAS 23 forms which itemize the costs incurred during each of the flights.

The Bald Mountain, Callaghan, Desatoya, Diamond, and Seven-Mile HMAs and the Butler Basin and Dobbins Summit Forest Service Territories were censused between August 9-12, using a Bell 47 G3 B2 helicopter from Skyhawk Helicopter (Minersville, Utah). Alan Carter, owner of Skyhawk, was the pilot during the R/W portion of the 1993 census.

The South Shoshone and Rocky Hills HMAs were censused using the Maule M5-235 fixed-wing from Western Air Research, Driggs, Idaho.

Those HMAs which were not scheduled for census in FY93 were monitored for wild horse distribution using the F/W Maule. (The exception to this was the Augusta HMA, censused by the CC District in July, 1993, with this data filed in the SERA HMA file.) The F/W census and distribution flights took place between August 16-20, 1993 and were piloted by Merlin Hare.

The Battle Mountain District funded the majority of the R/W census with NSO covering costs associated with ferrying the R/W pilot and his service truck to and from their base in Utah. The Austin Ranger District provided funding for three hours of census in the Butler Basin and Dobbins Summit Wild Horse Territories.

The Battle Mountain District funded all of the F/W portion of the aerial surveys.

Table 1 breaks down R/W ferry and census time.

TABLE I

<u>HMA</u>	<u>Ferry Time</u>	<u>Census Time</u>
Seven Mile, Dobbins Summit, Butler Basin	.70 hours each way from O5U	6.30 hours
Desatoya	.40 hours each way from 9U3	5.70 hours

<u>HMA</u>	<u>Ferry Time</u>	<u>Census Time</u>
Diamond	.20 hours each way from O5U	4.80 hours
Callaghan	.70 hours from O5U, .40 hours to 9U3	6.20 hours
Bald Mountain	no ferry time from Callaghan	2.70 hours

Flight and pilot ferry time to and from base were charged at the same rate of \$313.00/hour, a figure which includes the OAS surcharge. The fuel truck was paid at \$.75/ mile. Pilot and fuel truck per diem were \$66.00/day. The OAS 23 itemizes costs incurred during the R/W portion of the census. See attached forms.

Table II lists F/W ferry and census/survey times.

Table II

Rocky Hills	.28 hours BAM to project	3.20 hours (census)
South Shoshone	.27 hours BAM to project	5.27 hours (census)
New Pass/Ravenswood	.35 hours BAM to project	4.22 hours (distribution)
Fish Creek	.62 hours BAM to N. FC	3.65 hours (distribution)
Whistler/Roberts Mtn.	.39 hours BAM to Whistler	2.40 hours (distribution)

HMA

Ferry Time

Table III lists the number and age class of horses by allotment and HMA.

Table III

	Adults	Foals	Total
Callaghan HMA			
Austin Allotment	367	46	413
Grass Valley Allotment	391	47	438
Simpson Park Allotment	6	1	7
Outside HMA boundaries	130	21	151
Totals:	894	115	1,009

	Adults	Foals	Total
Bald Mountain HMA			
Carico Lake Allotment	266	47	313
Desatoya HMA			
Porter Cyn Allotment	112	10	122
South Smith Ck Allot	20	2	22
Carson City District	78	7	85
Totals:	210	19	229
Diamond HMA:			
Black Pt. Allotment	109	25	134
Diamond Sps. Allotment	139	14	154
Spanish Stn. Allotment	1	0	1
Three-Mile Allotment	9	1	10
Ely District	75	12	87
Totals:	333	52	385
Rocky Hills HMA:			
Grass Valley Allotment	39	4	43
JD Allotment	99	17	116
Totals:	138	21	159
Seven-Mile HMA			
Seven-Mile Allotment	73	3	76
Sweeney Wash Allotment	0	0	0
Adjoining Forest Service Territories			
Dobbins Summit	20	1	21
Butler Basin	27	7	34
Totals:	120	11	131
South Shoshone HMA:			
Austin Allotment	37	1	38
Carico Lake Allotment	183	24	207
Totals:	220	25	243

This summer has been cool, with measurable rainfall into early July. Many springs which in recent years have been dry by this time of the year, are still running water. The horses are widely distributed throughout the valleys and mountains. The foal crop is noticeably lower than in recent years, and ranges from lows of 8.3% and 8.4% in the Desatoya and Seven-Mile HMAs to highs of 13.2% and 15.0% in the Rocky Hills and Bald Mountain HMAs.

The majority of the horses in the Callaghan HMA have moved back inside HMA boundaries with those remaining outside apparently having established permanent residence. These animals are concentrated in and around Steiner Creek, Dry Creek Ranch/Bates Mountain, and central/eastern Grass Valley.

Many of the horses which have been grazing the white sage in Antelope Valley have moved back inside the boundaries of their HMA and are watering at Dry Lake, McCullochs and unnamed springs in the Mahogany Hills and at unnamed springs south of Fenstermaker Wash.

Whistler Mountain horses are watering at Hash, Railroad and Trap Corral Springs inside their HMA, with water flow at each of these sources higher than I've ever seen at this time of the year. The Whistler horses still move into the northern Kobeh Valley around Lone Mtn. watering at the troughs and ponds on Lucky C Allotment.

Horses in the Roberts Mountain HMA are not concentrating in the Kobeh Valley as much as in recent years. The animals are more widely scattered east to the Nicols pasture and north into the foothills of Roberts Mountain. Ideally, horses in the Roberts Mountain, northern Fish Creek and Whistler HMAs will be managed as one biological unit.

Horse numbers in the Seven-Mile HMA still are not increasing. The foal crop was very low in 1993. Neither water nor forage appear to be limiting factors in this HMA and the horses have relatively unrestricted freedom to move long distances. Varying numbers of Seven-Mile horses seasonally drift into southern Fish Creek HMA (south of Fenstermaker Wash) while others move into the adjoining Forest Service Territories, factors which may contribute to the lack of a population increase within the HMA boundaries. Horses numbers in the Forest Service Territories are higher in FY93 than have been documented in recent years. Ideally, the Seven-Mile, Fish Creek HMAs and the adjoining FS Territories will be managed as one biological unit.

Census of the Diamond HMA needs to be coordinated with the Ely District Office. The Diamond Horses are moving freely between District boundaries and ideally would be managed as one unit.

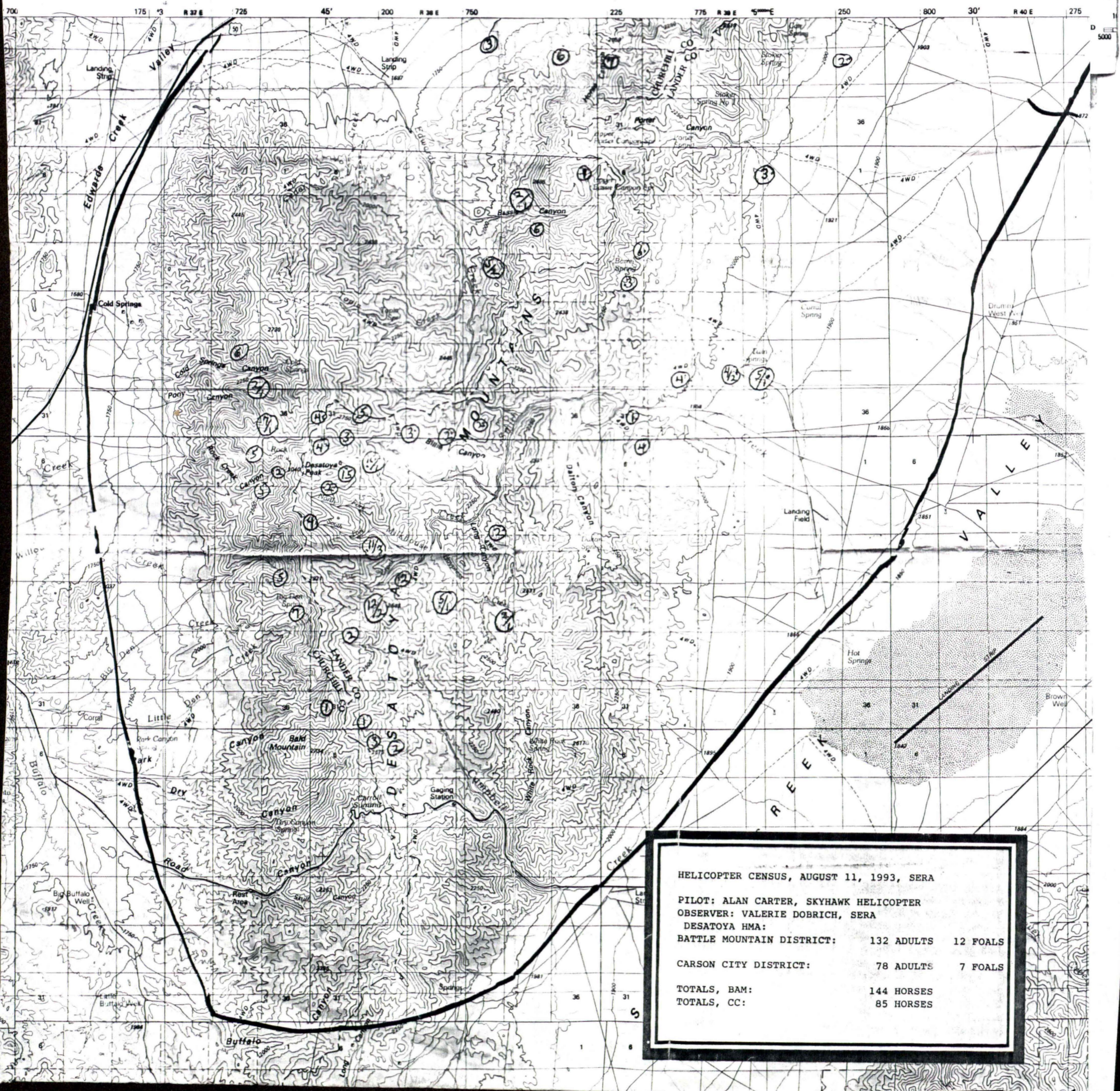
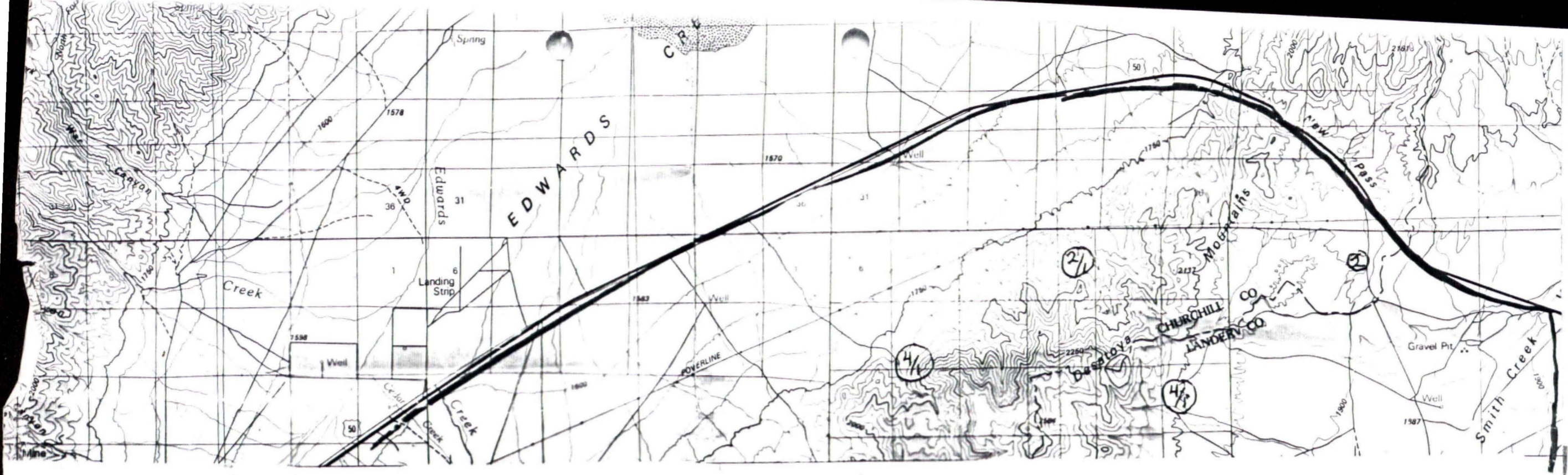
There are at least 7 collared horses remaining in the New Pass/Ravenswood HMA. Planning of the Gilbert Creek Gather must be done in a way which will allow these animals to be brought in for

removal of the collars. Each time I've seen the animals they are in the pinjon/juniper foothills west of Big George Spring. They trail into the mountains and move south along the ridgeline when spooked.

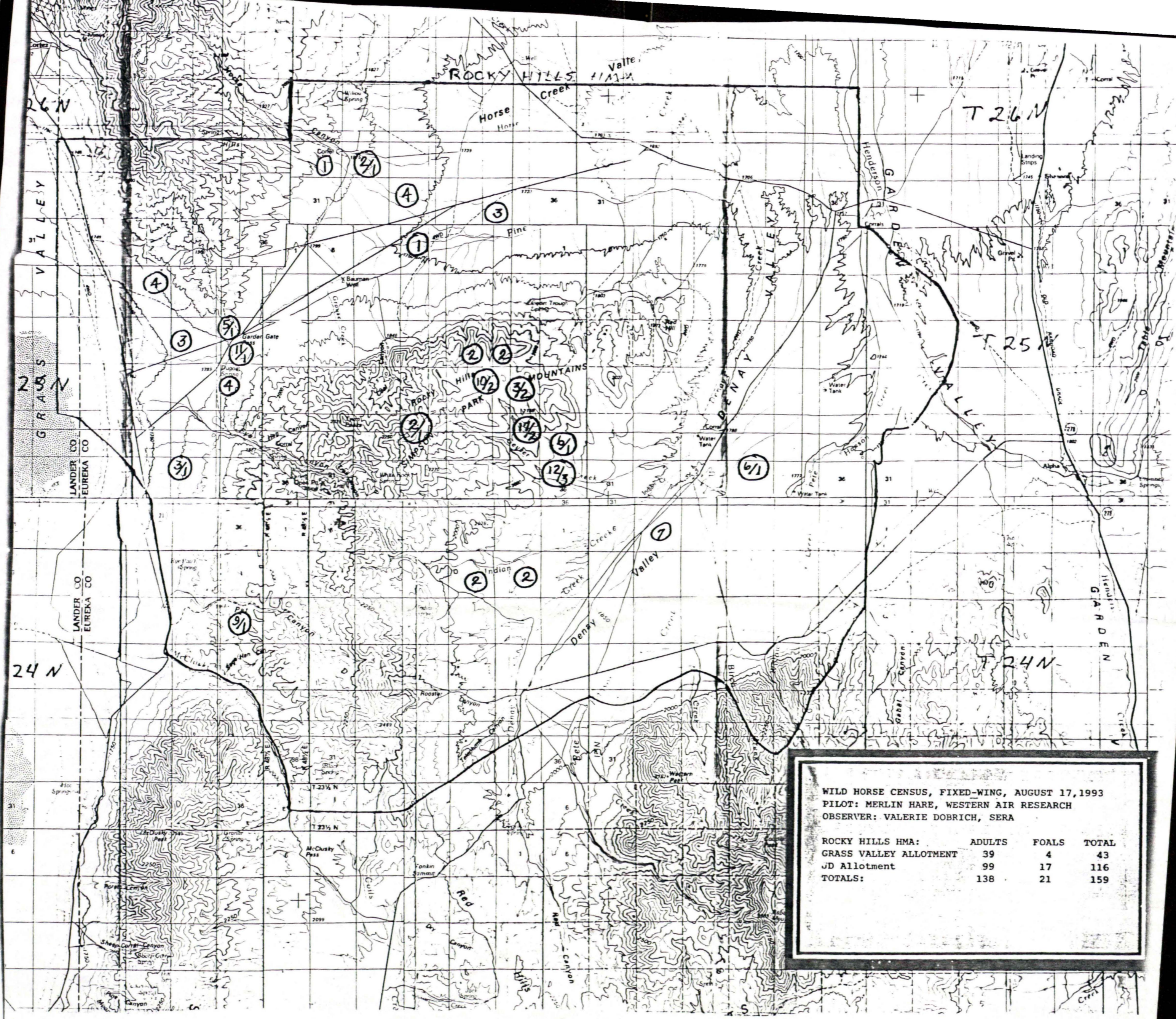
The Austin Ranger District provided funding in FY 93 for 3 hours of R/W flight time. Increasing their budget to 6 hours of R/W flight time/year would provide adequate funding to cover Forest Service shares of the costs associated with R/W or F/W ferry and flight time, service truck mileage and pilot/driver per diem.

cc:

Dale Flanigan, Austin Ranger District
Bob Brown, Ely District
Jim Gianola, Carson City District
Nevada Commission for the Preservation of Wild
Horses, Cathy Barcomb, Director
Dawn Lappin, Wild Horse Organized Assistance



HELICOPTER CENSUS, AUGUST 11, 1993, SERA		
PILOT: ALAN CARTER, SKYHAWK HELICOPTER		
OBSERVER: VALERIE DOBRICH, SERA		
DESATTOYA HMA:		
BATTLE MOUNTAIN DISTRICT:	132 ADULTS	12 FOALS
CARSON CITY DISTRICT:	78 ADULTS	7 FOALS
TOTALS, BAM:	144 HORSES	
TOTALS, CC:	85 HORSES	



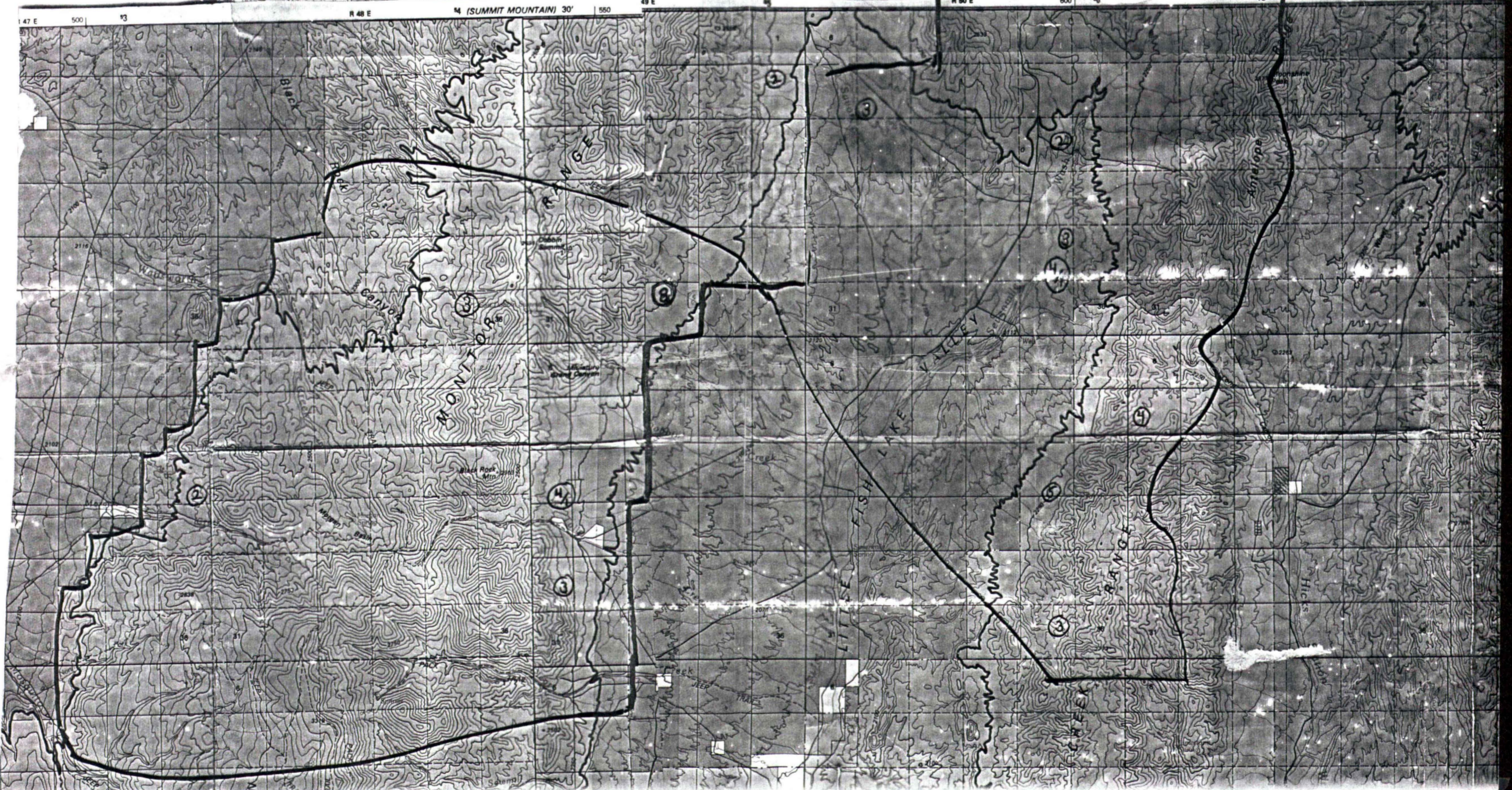
WILD HORSE CENSUS, FIXED-WING, AUGUST 17, 1993
 PILOT: MERLIN HARE, WESTERN AIR RESEARCH
 OBSERVER: VALERIE DOBRICH, SERA

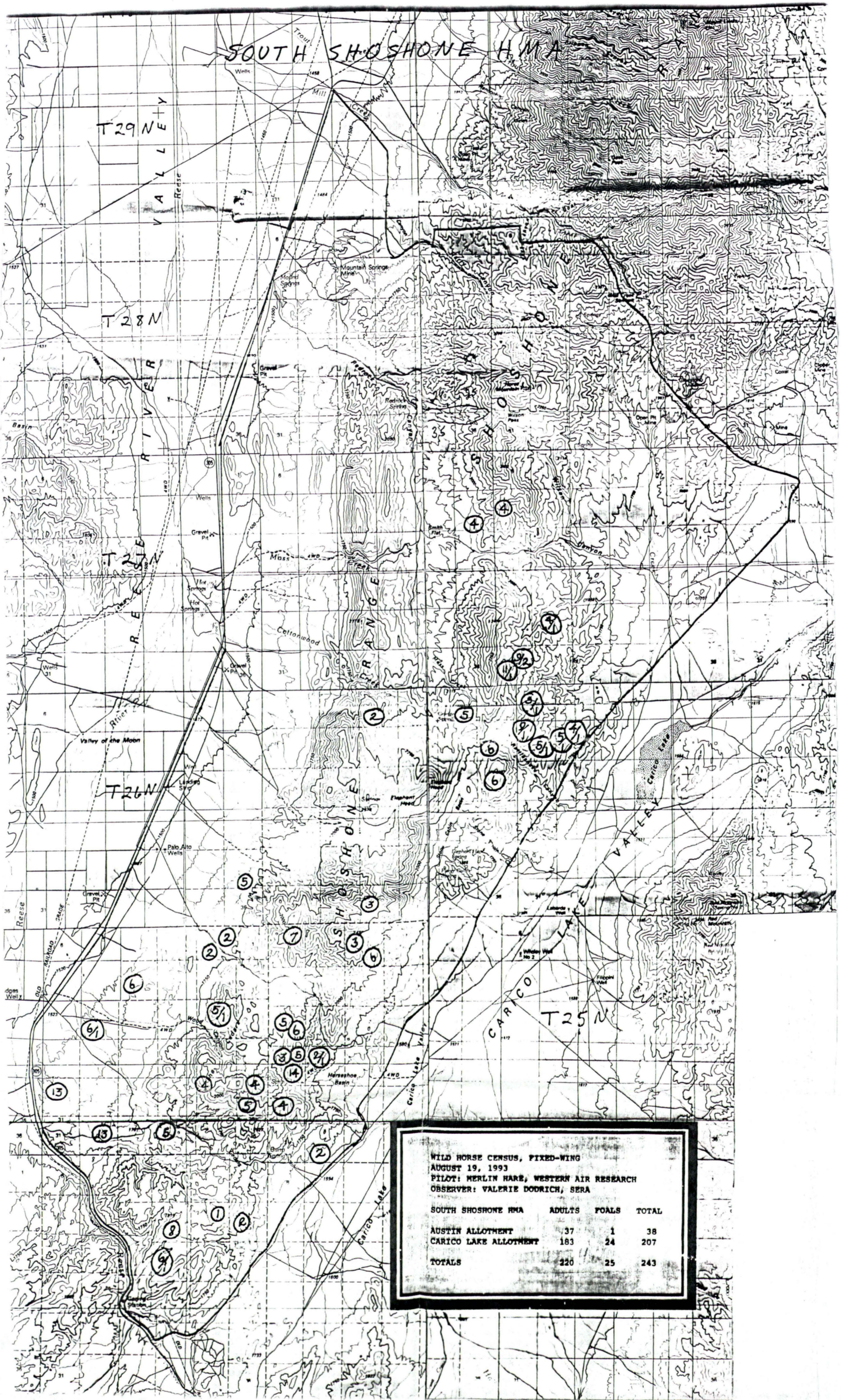
ROCKY HILLS HMA:	ADULTS	FOALS	TOTAL
GRASS VALLEY ALLOTMENT	39	4	43
JD Allotment	99	17	116
TOTALS:	138	21	159

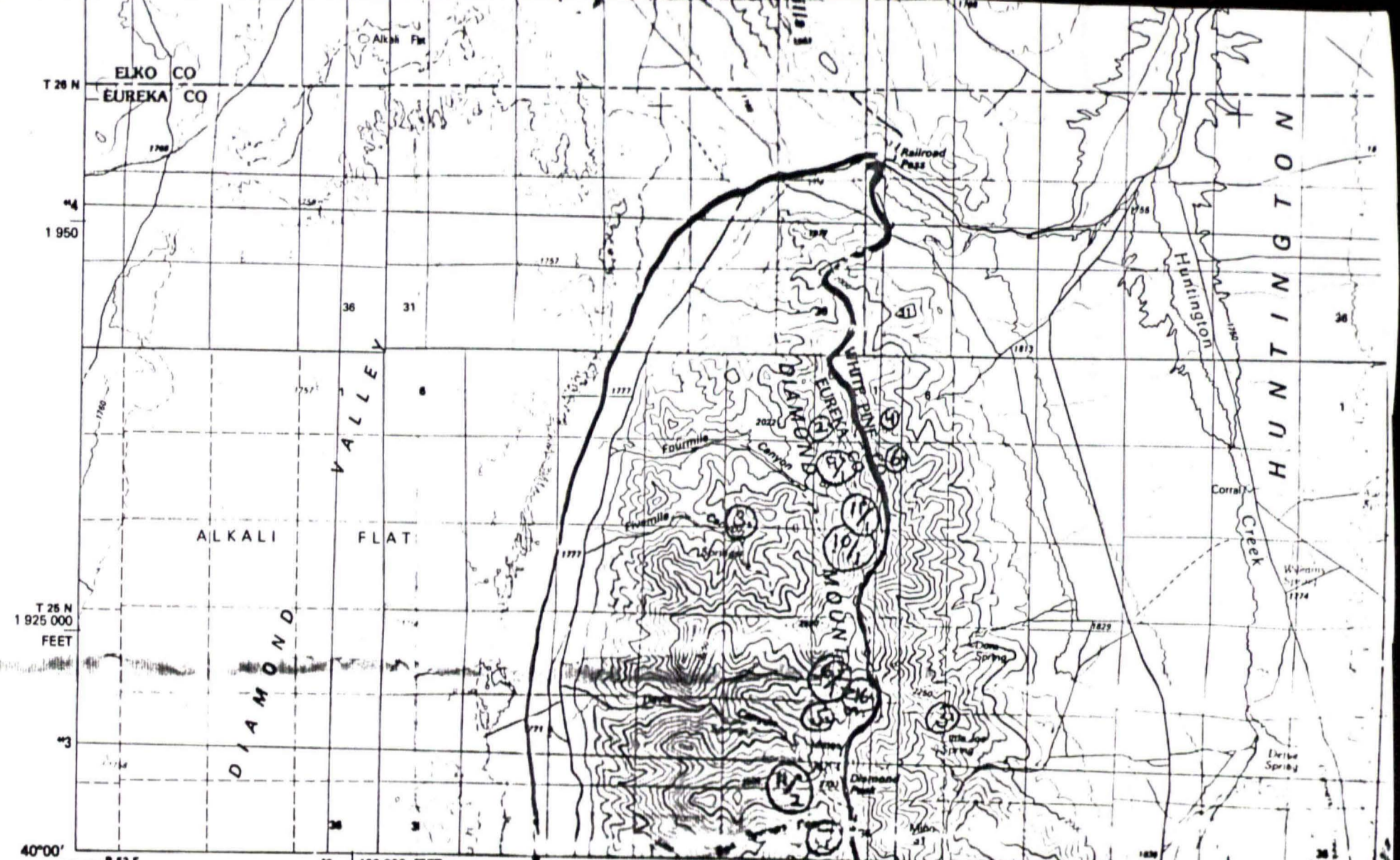
HELICOPTER CENSUS, SERA, AUGUST 9, 1993
 PILOT: ALAN CARTER, SKYHAWK HELICOPTER
 OBSERVER: VALERIE DOBRICH, SERA

SEVEN MILE HMA: 73 ADULTS 3 FOALS
 TOTAL: 76 HORSES

DOBBS SUMMIT: 20 ADULTS 1 FOAL
 BUTLER BASIN: 27 ADULTS 7 FOALS
 TOTALS: 35 ADULTS 8 FOALS
 35 HORSES



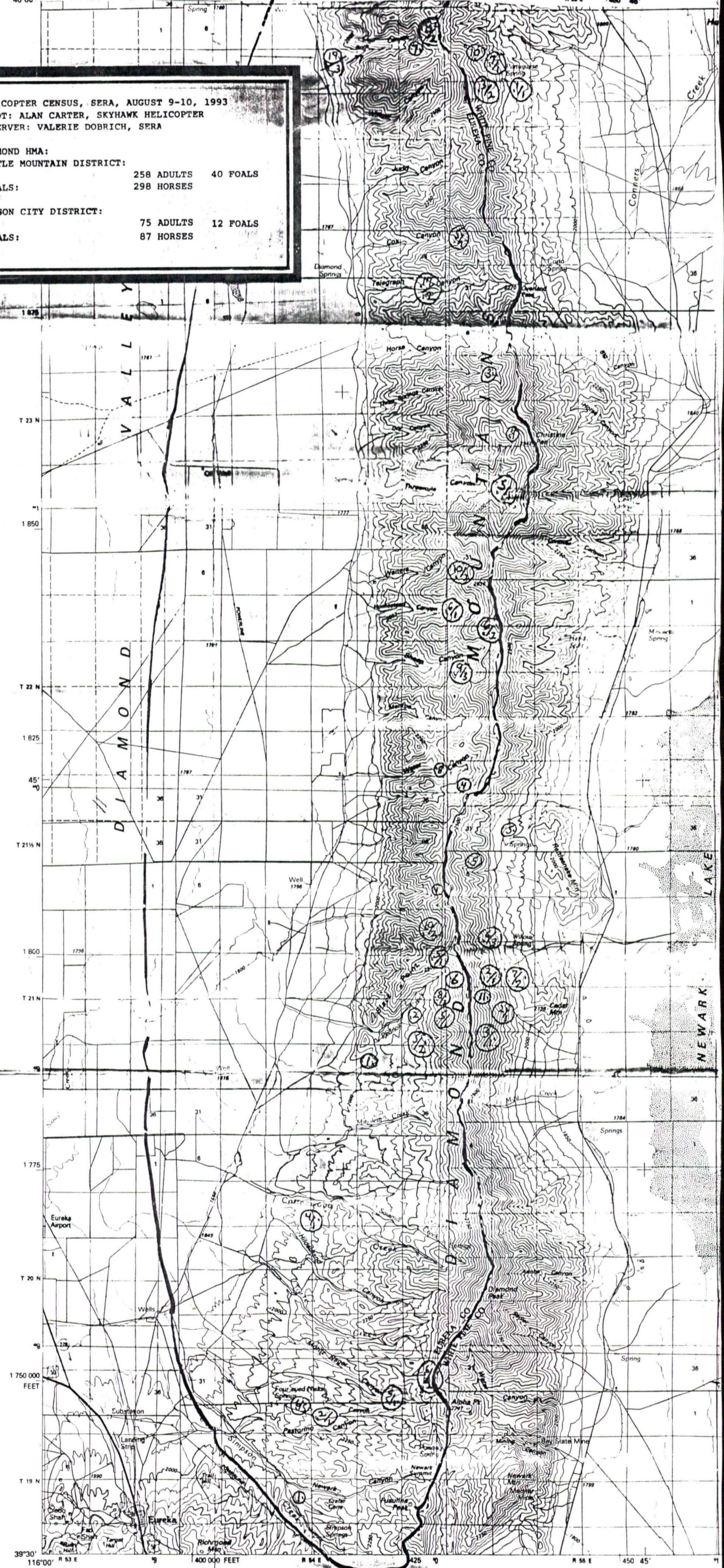




HELICOPTER CENSUS, SERA, AUGUST 9-10, 1993
 PILOT: ALAN CARTER, SKYHAWK HELICOPTER
 OBSERVER: VALERIE DOBRICH, SERA

DIAMOND HMA:
 BATTLE MOUNTAIN DISTRICT:
 TOTALS: 258 ADULTS 40 FOALS
 298 HORSES

CARSON CITY DISTRICT:
 TOTALS: 75 ADULTS 12 FOALS
 87 HORSES



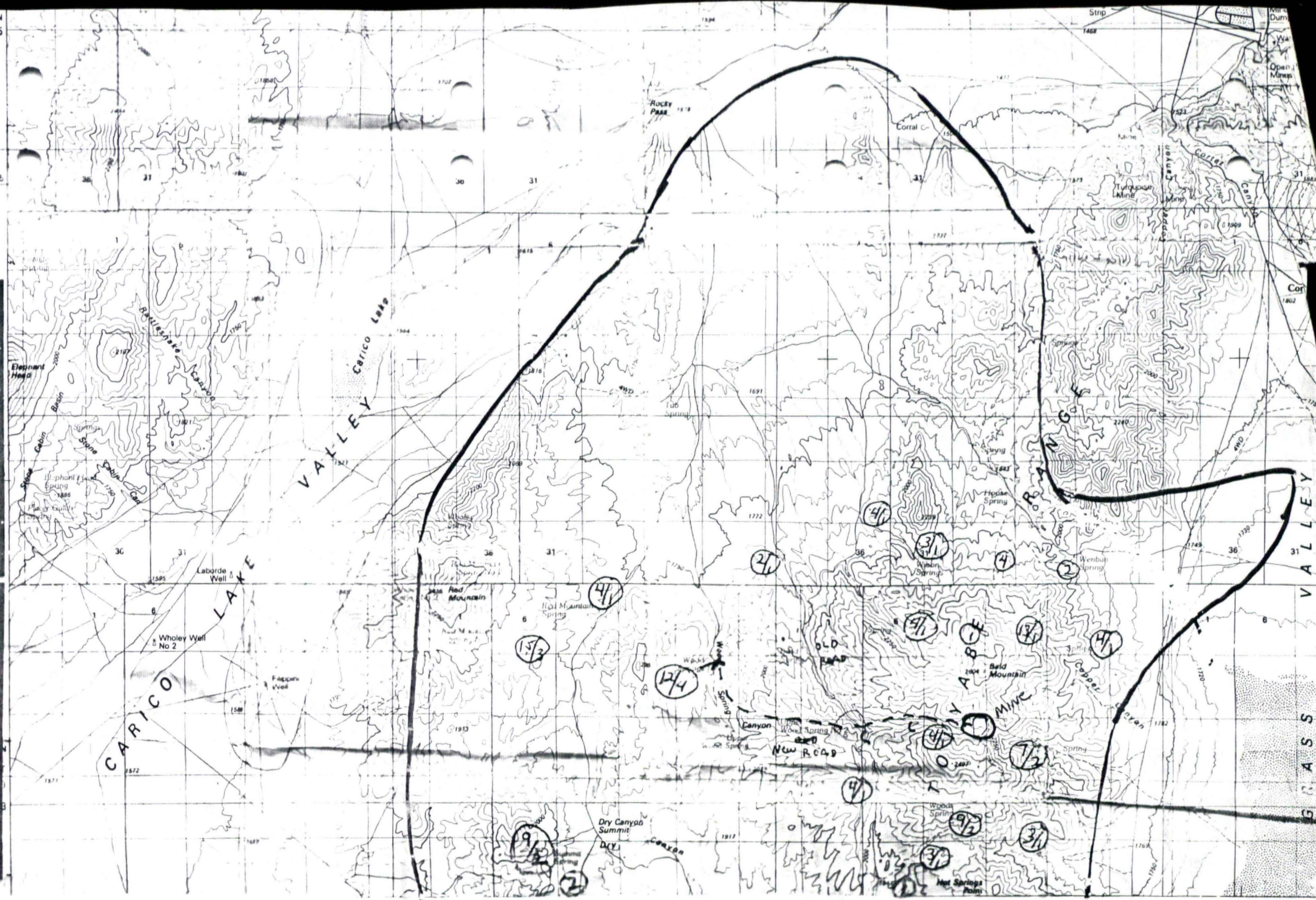
570

HELICOPTER CENSUS, SERA, AUGUST 10, 1993
 PILOT: ALAN CARTER, SKYHAWK HELICOPTER
 OBSERVER: VALERIE DOBRICH, SERA

BALD MOUNTAIN HMA: 266 ADULTS 47 FOALS
 TOTALS: 313 HORSES

HELICOPTER CENSUS, SERA, AUGUST 10, 1993
 PILOT: ALAN CARTER, SKYHAWK HELICOPTER
 OBSERVER: VALERIE DOBRICH, SERA

CALLAGHAN HMA: 764 ADULTS 94 FOALS
 INSIDE HMA: 130 ADULTS 21 FOALS
 OUTSIDE HMA: 894 ADULTS 115 FOALS
 TOTALS: 1,009 HORSES



30X60 MINUTE SERIES (TOPOGRAPHIC)

