

Battle Mountain Field Office -- Wild Horse and Burro Population Estimates -- Effective March 2008

3/08

BMFO estimated populations prior to and following foaling, using 17.5% annual increase (unless otherwise indicated).
If AML was established as a range, the high and low numbers are shown. Where AML was established as single number, it is indicated in the AML High Column.

HMA Number	HMA Name	Allotment Name	AML		AML Date	2008 Population Estimate		Last Census Mo/Yr	Last Gather Mo/Yr	Planned Gather Mo/Yr	Complex Associated HMAs
			High	Low		Pre-Foaling	Post-Foaling				
311	Augusta Mountains	Home Station (BMFO) Cottonwood (BMFO) Total	56 33 89		1997 1994		WMCA Field Office	September 2007	Nov. 2007	?	
601	South Shoshone	Austin Carico Lake Total	0 100 100	60 60	1995 2005	see Callaghan 63 63	74 74	May 2007	January 2008	?	Bald Mountain
602	New Pass/Ravenswood	Gilbert Creek Manhattan Mountain CCFO Portion Clan Alpine Allotment Total	378 98 90 566	69 69	1992 1991		268	September 2007	November 2007	?	CCFO New Pass
603	Bald Mountain	Carico Lake	215	129	2005	517	607	March 2008	1981	Winter '09	South Shoshone
604	Callaghan	Grass Valley Austin Simpson Park USFS Total	163 35 39 NA 237	98 14 NA NA 147	2002 1995 2005 NA	323 498 15 11 847	380 585 18 13 995	March 2008	July '02	Winter '09	Rocky Hills
605	Rocky Hills	Grass Valley JD Total	30 113 143	18 68 86	2002 2004	0 141 141	0 166 166	March 2008	Nov '99	Winter '09	Callaghan
606	Desatoya	Porter Canyon South Smith Creek Total	67 15 82		1999 1999		Carson City Field Office	Carson City Field Office	2003	?	
607	Roberts Mountain	Roberts Mountain Three Bars Total	58 92 150		1995 1995		123	Jan. 2008	January 2008	?	Whistler Mountain Kobeh Valley
608	Whistler Mountain	Romano Lucky C Total	20 4 24	12 2 14	2004 2004	Fluctuates with Roberts 5	6	Jan. 2008	January 2008	?	Roberts Mountain Kobeh Valley
609	Diamond	Corta Black Point North Diamond Shannon Station Three Mile Diamond Springs Total	4 65 2 11 15 54 151		2000 2000 2000 2000 2000	0 12 0 0 51 67 129	0 14 0 0 60 79 153	July '06	July '04	?	Diamond Hills North and South, (Elko and Ely)

Callaghan HM

~~Callaghan~~
Bald Mountain
Roberts Mtn. Dist.

3/2008

HMA Number	HMA Name	Allotment Name	AML		AM Date	2008 Population Estimate		Last Census Mo/Yr	Last Gather Mo/Yr	Planned Gather Mo/Yr	Complex Name
			High	Low		Pre-Foaling	Post-Foaling				
610	Hickison Burros (Burros/Horses) BLM AND USFS	Simpson Park	15	5	2005			March'02 USFS Sept '04	Never	?	NA
		Kingston	30	11	2005						
		Total	45	16		108	127				
611	North Monitor	Willow Ranch	8		1994			September 2007	Feb '06	?	Fish Creek Complex
		USFS Kelly Creek WHT	<i>Pending</i>								
Total			8			19	22				
612	Fish Creek	Arambel	54	32	2004			September 2007	Feb '06	?	Fish Creek Complex
		Fish Creek Ranch	75	45	1994/2004						
		Lucky C	42	25	2004						
		Ruby Hill	9	5	2004						
		Total	180	107		100	118				
613	Sevenmile	Sevenmile			2004			September 2007	Feb '06	?	Fish Creek Complex
		Sweeney Wash			1994/2004						
		USFS Butler Basin WHT			2003						
Total			100	60		200	235				
Outside of HMA's	NA will be gathered as the Simpson Park Mountains gather, and will include the 50 of the horses located in the Hickison Burro HMA	Grass Valley				9	11	March 2008	Nov '05	?	NA
		Underwood				0	0				
		Dry Creek				0	0				
		Santa Fe Ferguson	NA	NA	NA	1	1				
		Simpson Park				3	4				
		Total				14	15				

Battle Mountain Field Office Summary -- 2006 Estimated Wild Horse and Burro Populations				
AML Summary (horses and burros)			Pre-Foaling	Post-Foaling
AML total	2090		Wild Horses	2426
	(1955 h, 45 b)		Wild Burros	108
			Total	2534

Complex Name
Fish Creek

HMA Name
Fish Creek
Sevenmile HMA/Butler Basin WHT
Little Fish Lake HMA/WHT (Could be w/ Stone Cabin)
North Monitor HMA/Kelly Creek WHT
Monte Cristo (Ely)

Complex Name
Roberts Mountain

HMA Name
Roberts Mountain
Whistler Mountain
N. Portion of Fish Creek/Kobeh Valley Herd Area

Callaghan

Callaghan
Rocky Hills
Bald Mountain

Tonopah Field Station -- Wild Horse and Burro Population Estimates -- Effective March 2008

TFS estimated populations prior to and following foaling, using 16% annual increase (unless otherwise indicated).

If AML was established as a range, the high and low numbers are shown. Where AML was established as single number, it is indicated in the AML High Column.

HMA Number	HMA Name	Allotment Name	AML		AML Date	2008 Population Estimate				Last Census Mo/Yr	Last Gather Mo/Yr	Planned Gather Mo/Yr	Complex Associated HMAs
			High	Low		Horse		Burro					
						Pre-Foaling	Post-Foaling	Pre-Foaling	Post-Foaling				
314	Pilot Mountain South (Dunlap)	Monte Cristo	69		2002	330	383			August '05	Jan 2005		Carson City Field Office AML for entire HMA = 415
614	Little Fish Lake	Wagon Johnnie	39		1992 (Court Order)	50 <small>XX BLM/XX USFS</small>	58			Jan '06	Feb '06	?	Fish Creek Complex
616	Hot Creek	Hot Creek	41		1992 (Court Order)	11	13			Jan '07	Jan '06	?	
618	Stone Cabin	Stone Cabin	364		1992 (Court Order)	171	198			Jan '07	Feb '07	?	Stone Cabin Complex (Stone Cabin, Saulsbury, Reveille HMAs, Monitor WHT)
		Willow Creek	54 AUMs		USFS admin								
619	Reveille	Reveille	138		2001	57	66			Jan '07	Nov '01	?	Gathered 23 outside '07
620	Saulsbury	Hunts Canyon	30		1992		0			Jan '07	Feb '07	?	Stone Cabin Complex
		Ralston	10		1992		0						
		Total	40			27	31						
621	Paymaster	Sheep Mountain	28		2003								Montezuma Complex (Montezuma Peak, Goldfield, and Paymaster HMAs)
		Montezuma	0		2007								
		Monte Cristo	8		2002					Sept 2006	Sept 2006	?	
		Yellow Hills	1		2003								
		Unallocated	1										
		Total	38			39	45						
622	Fish Lake Valley	Fish Lake Valley	5		2005	0	0						Estimates based on substantial ground monitoring '07, and gather of 14 head summer '07
		Monte Cristo	0		2002	0	0						
		Silver Peak	0		2005	0	0			April 2003	Jan 2005	?	
		Red Springs	49		1995	15	17						
		Ice House	0		2005	4	5						
		Total	54			19	22						
623	Silver Peak	White Wolf	0		1995								2 burros observed during ground monitoring '07
		Silver Peak	0		2005								
		Red Springs	0		1995								
		Ice House	0		2005					Sept 2006	Sept 2006	?	
		Magruder Mtn	6 b		2004								
		Emigrant Peak	0		2005								
		Total	6 b			2	2	2	2				

HMA Number	HMA Name	Allotment Name	AML		AML Date	Population Estimate				Last Census Mo/Yr	Last Gather Mo/Yr	Planned Gather Mo/Yr	Complex Associated HMAs
			High	Low		Horse		Burro					
						Pre-Foaling	Post-Foaling	Pre-Foaling	Post-Foaling				
624	Palmetto	Magruder Mtn	76		2004	0	0	0	0	April 2000		NA	
625	Montezuma Peak	Montezuma	0		2007					Sept 2006	Nov 1996	?	Montezuma Complex
		Magruder Mtn	2h 10 b		2004								
		Yellow Hills	2		2000								
		Total	4h 10b			37 h	43	18 b, 3 m	21 b, 3 m				
626	Goldfield	Montezuma	0h 37 b	0h 24b	2007	6	7	7	8	Sept 2006	Nov 1996	?	Montezuma Complex
627	Stonewall	Montezuma	0h 8b	0h 5b	2007	0	0	20	23	Sept 2006	Aug 1996	?	
628	Gold Mountain	Magruder Mtn	78 b		2004	4	5	1 m	1 m	Sept 2006	Aug 1996	?	
629	Bullfrog	East	23	15	2007					September 2006	Aug 1996	?	East: part of Montz, Razorback, Springdale West: Montezuma
		West	68	43	2007								
		Total	91b	58b			75	87					
630	Sand Springs West	Sand Springs	48	56	1992 (Court Order)	56	65			April 2005	Jan '06	?	Monte Cristo, Sand Springs East

Tonopah Field Station Summary -- 2008 Estimated Wild Horse and Burro Populations				
AML Summary (horses and burros)			Pre-Foaling	Post-Foaling
	AML horses	917	Wild Horses	907
	AML burros	230	Wild Burros	142
	AML totals	1147	Total	1049 (+4 mules)

Complex Name
Stone Cabin

HMA Name
Saulsbury
Monitor WHT
Stone Cabin
Reveille
Little Fish Lake
Fish Creek
Sevenmile HMA/Butler Basin WHT

Fish Creek
(BMFO lead)

North Monitor HMA/Kelly Creek WHT

Complex Name
Monte Cristo
(Ely FO lead)

HMA Name
Sand Springs West
Sand Springs East
Monte Cristo

Montezuma

Montezuma Peak
Goldfield
Paymaster

Battle Mountain and Tonopah HMAs -- At or below AML shaded GREEN, Exceeding AML in RED BOLD

HMA Number	HMA Name	AML		Population Estimates			Last Gather Completed	Next Gather Scheduled
				Feb-08	2008 Post foaling	End FY2008, Sept 31		
		High	Low					
311	Augusta Mountains	89		Winnemucca Field Office			Nov. 2007	?
601	South Shoshone	100	60	63	74	74	Jan. 2008	?
602	New Pass/Ravenswood	476		268	315	315	Nov. 2007	?
603	Bald Mountain	215	129	517	610	607	1981	Nov. 2008
604	Callaghan	237	147	847	995	995	July 2002	Nov. 2008
605	Rocky Hills	143	86	141	166	166	Nov 1999	Nov. 2008
606	Desatoya	82		Carson City Field Office			2003	?
607	Roberts Mountain	150		123	145	145	Jan. 2008	?
608	Whistler Mountain	24	14	5	6	6	Jan. 2008	?
609	Diamond	151		129	153	153	July 2004	?
610	Hickison Burros	45	16	108	127	127		?
611	North Monitor	8		19	22	22	Feb 2006	?
612	Fish Creek	180	107	100	118	118	Feb 2006	?
613	Sevenmile	100	60	200	235	235	Feb 2006	?
314	Pilot Mountain South (Dunlap)	69		Carson City Field Office				?
614	Little Fish Lake	39		50	58	58	Feb 2005	?
616	Hot Creek	41		11	13	13	January 2005	?
618	Stone Cabin	364		171	198	198	January 2007	?
619	Reveille	138		57	66	66	January 2007	
620	Saulsbury	40		34	39	39	January 2007	

Battle Mountain and Tonopah HMAs -- At or below AML shaded GREEN, Exceeding AML in RED BOLD

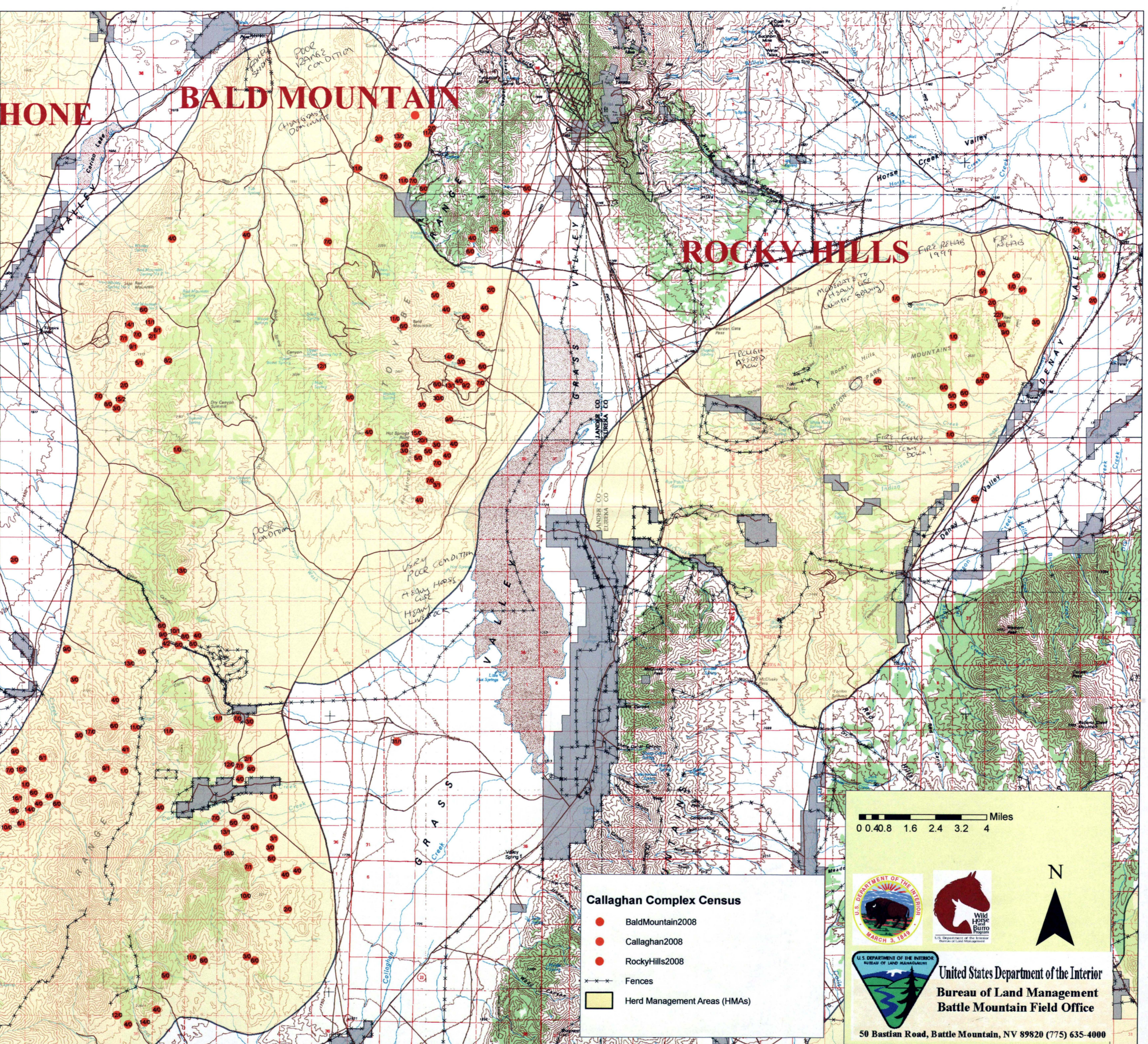
HMA Number	HMA Name	AML		Population Estimates			Last Gather Completed	Next Gather Scheduled
				Feb-08	2008 Post foaling	End FY2008, Sept 31		
		High	Low					
621	Paymaster	38h		39h 6b	45h 7b	45h 7b	October 2006	?
622	Fish Lake Valley	54		19	22	22	2003	?
623	Silver Peak	6b		2h 2b	2h 3b	2h 3b	October 2006	?
624	Palmetto	76		0	0	0	N/A	NA
625	Montezuma Peak	4h 10b		37h 3m 18b	43 h 3m 21b	43 h 3m 21b	1996	?
626	Goldfield	37b	24b	7h 7b	8h 8b	8h 8b	1996	NA
627	Stonewall	8b	5b	20b	23b	23b	1996	?
628	Gold Mountain	78 b		5h 1m	6h 1m	6h 1m	1996	NA
629	Bullfrog	91	58	75b	87b	87b	1996	?
630	Sand Springs West	49		48	56	56	January 2006	?

Status	Totals	Field Office Totals			District Totals	
		Number of HMAs	Number at (or below) AML	% at (or below) AML	Number at AML (of 27 total)	% at (or below) AML
2008 -- Current	Battle Mountain	12	6	50%	16	59%
	Tonopah	15	10	66%		
Projected end of FY2008	Battle Mountain	12	5	42%	15	56%
	Tonopah	15	10	66%		

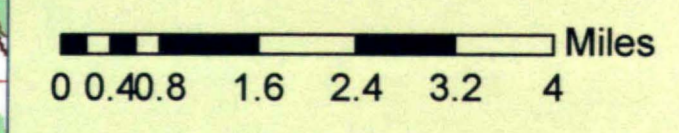
HMAs administered by an adjoining District are not counted in the totals here (Desatoya, Pilot Mountain, Augusta)

HONE BALD MOUNTAIN

ROCKY HILLS

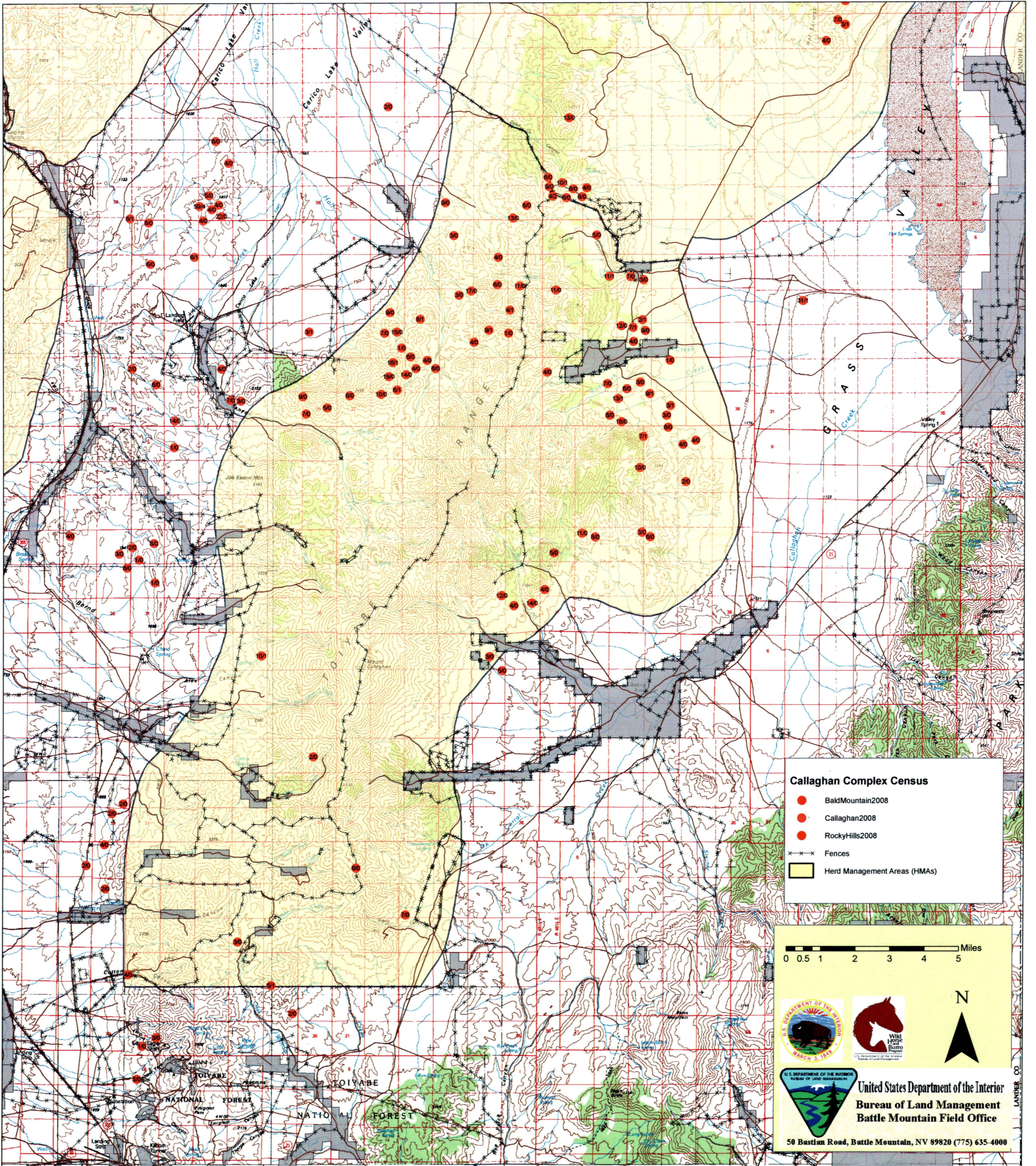


- Callaghan Complex Census**
- BaldMountain2008
 - Callaghan2008
 - RockyHills2008
 - Fences
 - Herd Management Areas (HMAs)



**United States Department of the Interior
Bureau of Land Management
Battle Mountain Field Office**

50 Bastian Road, Battle Mountain, NV 89820 (775) 635-4000


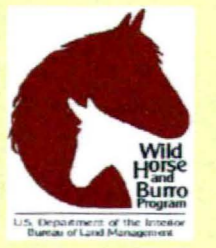



Callaghan Complex Census

- BaldMountain2008
- Callaghan2008
- RockyHills2008
- ××× Fences
- Herd Management Areas (HMAs)

0 0.5 1 2 3 4 5 Miles

N


United States Department of the Interior
Bureau of Land Management
Battle Mountain Field Office

50 Bastian Road, Battle Mountain, NV 89820 (775) 635-4000