



# United States Department of the Interior

## BUREAU OF LAND MANAGEMENT

Carson City Field Office  
5665 Morgan Mill Rd.  
Carson City, Nevada 89701  
(702) 885-6100

L  
12/8/98  
Pine Nut MMA

In Reply Refer To:  
4110  
(NV-03200)

December 8, 1998

Dear Interested Party:

The Carson City Field Office is processing two base property transfers. The first is from the Joe Ricci Estate to Donald Alt, and includes grazing in the Stockton Flat Allotment. The second transfer is from the Joe Ricci Estate to the Ricci Family Partnership, and includes grazing in the Hackett Canyon and Sunrise Allotment (refer to the attached maps).

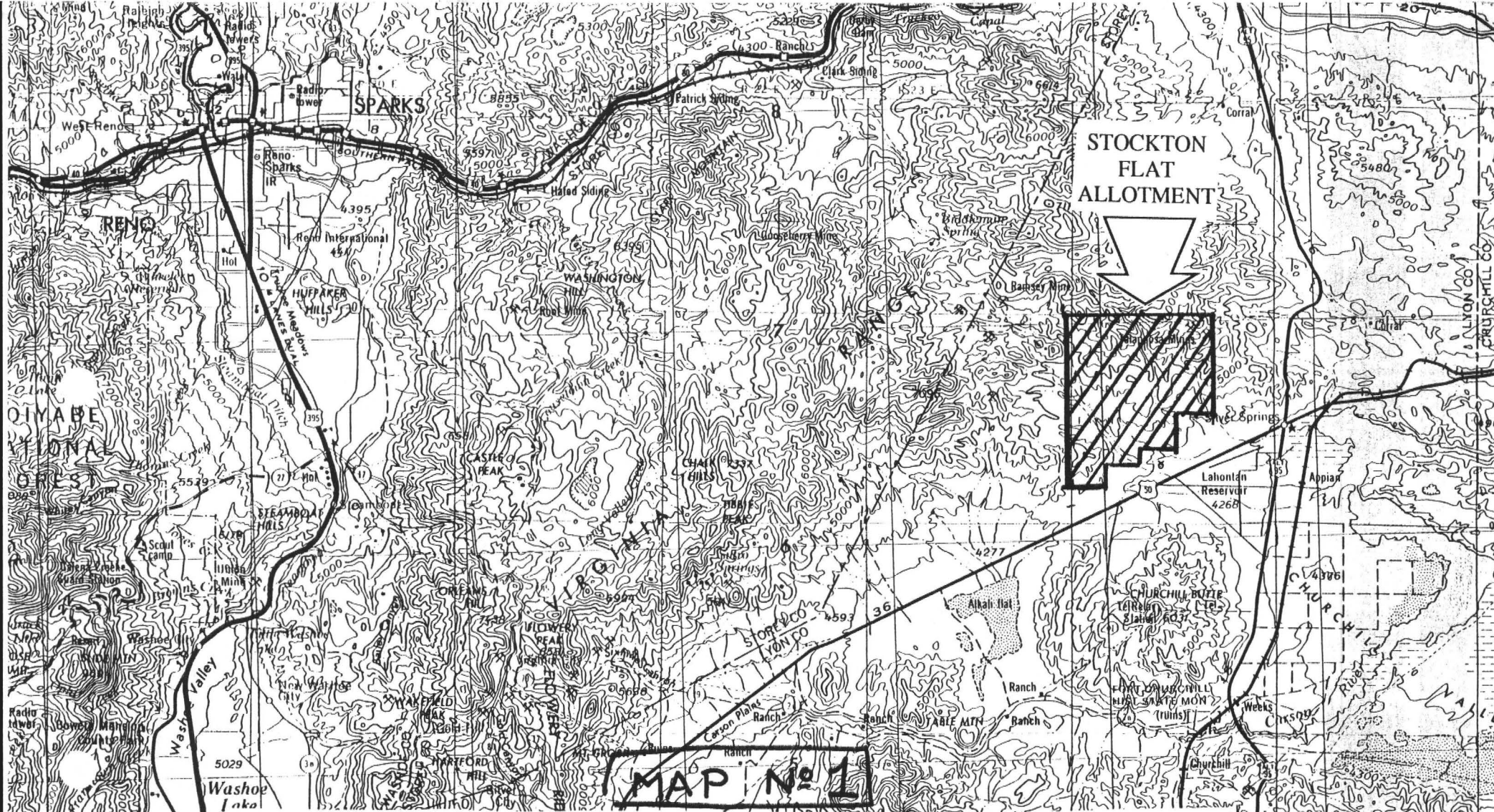
There will be no changes in the total number of animal unit months of specified grazing, authorized period of use, kind of livestock or other terms and conditions for any of these permits. If you have any data, information or concerns pertaining to these proposed actions, please provide it prior to January 8, 1998.

Sincerely,

Richard C. Benson  
Rangeland Management Specialist  
Renewable Resources

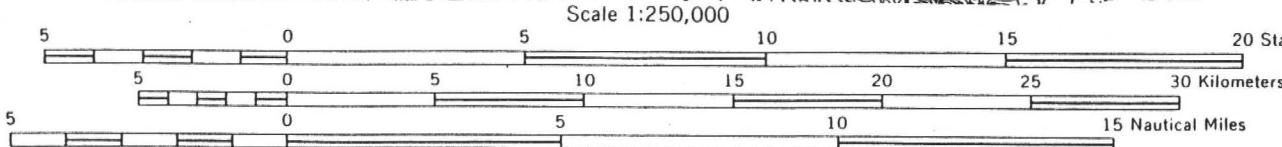
3 Enclosures:

1. Map of Stockton Flat Allotment
2. Map of Sunrise Allotment
3. Map of Hackett Canyon Allotment



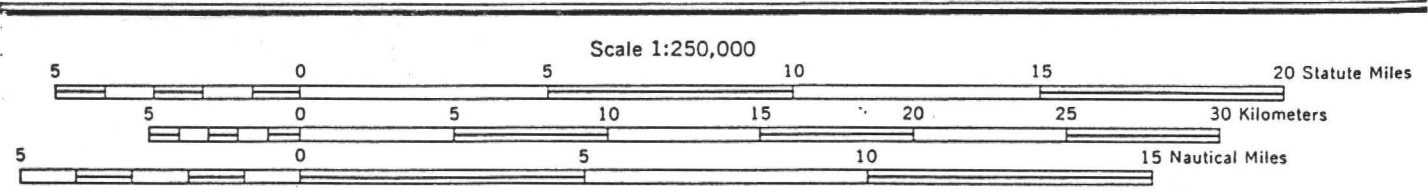
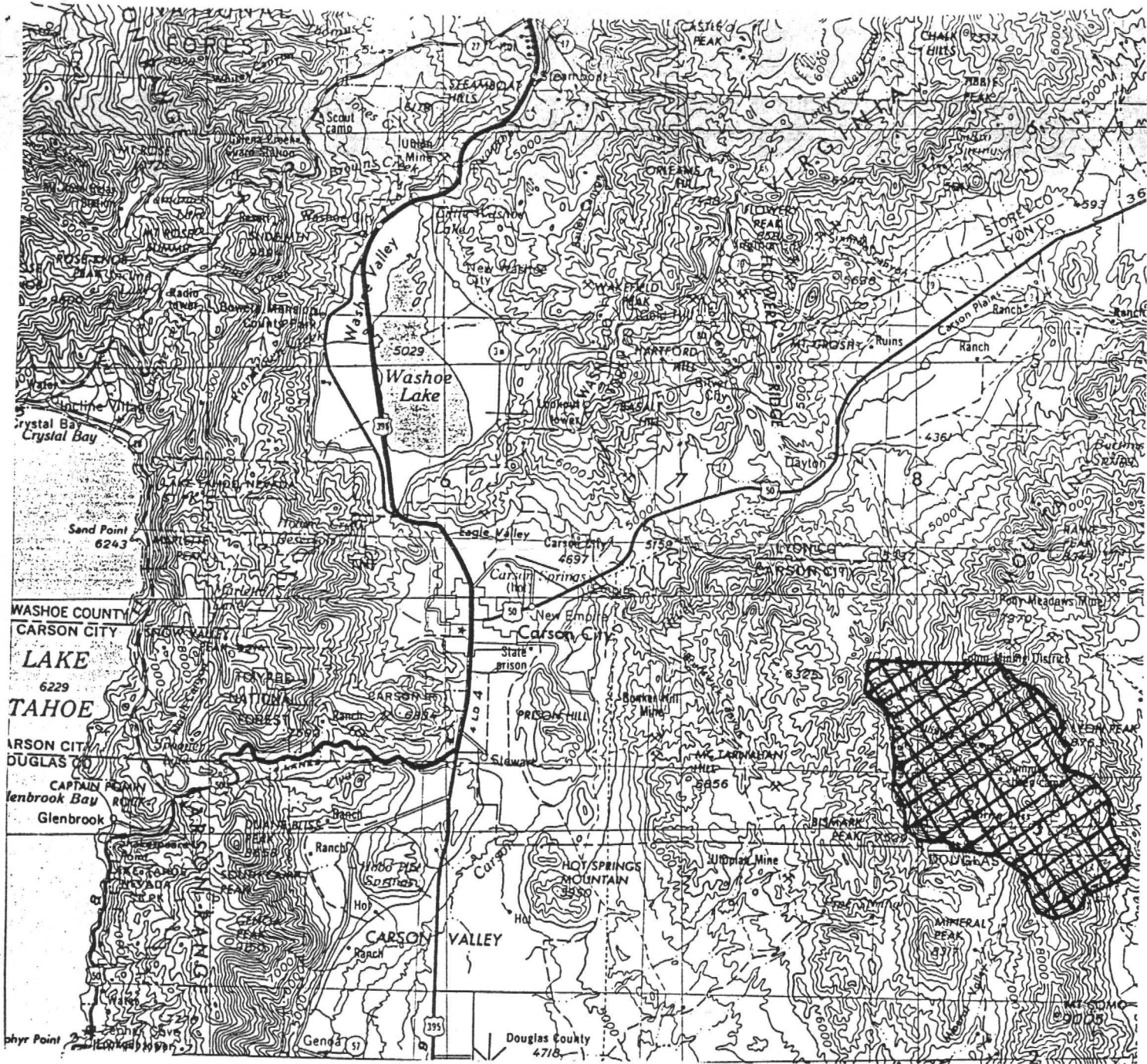
**STOCKTON  
FLAT  
ALLOTMENT**

**MAP No 1**



CONTOUR INTERVAL 200 FEET  
WITH SUPPLEMENTARY CONTOURS AT 100 FOOT INTERVALS





CONTOUR INTERVAL 200 FEET  
 WITH SUPPLEMENTARY CONTOURS AT 100 FOOT INTERVALS

MAP NO. 22  
 Location of Sunrise Allotment

