

M

est. 1976

map enclosed

FLANIGAN WILD HORSE HERD MANAGEMENT AREA PLAN  
PUBLIC PARTICIPATION PLAN

Publics Affected

A. Special Interest Groups

- Nevada Cattlemen's Association
- Nevada Woolgrowers Association
- Carson City District licensees
- Wild Horse Organized Assistance, Inc.
- American Horse Protection Association, Inc.
- Feral Organized Assistance League, Inc.
- Sierra Club
- Nevada Outdoor Recreation Association
- Nevada Organization for Wildlife
- Nevada Wildlife Federation
- Audubon Society
- Pyramid Lake Indian Reservation

B. News Media

- Nevada State Journal
- Reno Evening Gazette
- KOLO TV and Radio
- KCRL TV and Radio
- KTVN TV
- KOH Radio
- Other Regional and/or National media

C. Local, Regional, National citizens

D. Nevada Multiple Use Advisory Board

E. The State Multiple Use Advisory Committee on Federal Lands

F. National Advisory Board on Wild Horses and Burros

G. University of Nevada - Reno

- College of Agriculture
  - Division of Agricultural and Resource Economics
  - Division of Plant, Soil, and Water Science
  - Division of Renewable Natural Resources
  - Division of Animal Science

H. Government Agencies

Department of the Interior  
Bureau of Land Management  
Washington, D. C. Office  
Nevada State Office  
Carson City District  
Other Nevada BLM Districts

State of Nevada  
Governor's Office  
Department of Agriculture  
Department of Fish and Game

Area Council of Governments  
Regional Planning Commission

Long Range Goals

To develop public support and commitment to the following management objectives which were identified in the BLM planning system for the Pyramid Planning Unit:

1. Maintain wild, free-roaming horses in the Pyramid Planning Unit by controlling their numbers and providing adequate forage to insure their survival.
2. Reduce the demand for forage by domestic animals, wildlife, and wild horses to meet the supply as determined by field studies.
3. Improve the range condition.
4. Establish a manageable wild horse herd in a compatible area in compliance with the Wild, Free-Roaming Horse and Burro Act.



### Short Range Goals

To capture, remove, and/or relocate horses from the entire Pyramid Planning Unit to the Flanigan Wild Horse Herd Management Area in accordance with the Flanigan Wild Horse Herd Management Plan dated February 12, 1976.

To inform the public of the need and rationale for these actions.

To allow the public to observe the horses without creating management difficulties or safety hazards.

To provide the opportunity for claimed and/or branded horses to be identified and removed from the wild horse herd by their owners.

To submit timely news releases regarding the round-up and subsequent actions.

To fully inform those range users and the special interests most affected by the proposed action in advance of the round-up.

### Courses of Action

Meetings, letters of intent, and/or telephone communications will be used to inform the appropriate representatives of the state and federal agencies of our herd management plan and the required round-up of wild horses.

The contacts established will be maintained throughout the round-up process.

News releases will be issued describing the actions and their results as appropriate.

### Timetable of Actions

Prior news releases have indicated that horses in the Pyramid Planning Unit will be managed and reductions in their numbers made. These releases were summations of planning decisions made in 1974.

Land Use Guides describing the planning system decisions for the Pyramid - Long Valley Planning Units (including the need for a horse management plan) were mailed to the Carson City District publics in December 1975.

During the development of the herd management plan, state agency officials and special interest representatives (WFOA, range - users, indians) should be notified of the proposed action.

Upon approval of the Environmental Analysis Record, a timetable for the required actions should be developed and the special interests involved should be notified of the schedule.

News releases should be issued, as warranted by the interest generated by the actions, informing the public of our progress.

An announcement should be made when the horses are available for viewing by the public (if in a Reno holding corral).

Follow-up news releases should be issued when round-up, adoption, etc., has been completed to summarize the events and re-emphasize the long range results expected from the actions.

#### Communication Methods

1. Personal Contacts with  
special interests  
government agency officials  
news media
2. Letters, news releases

#### Provisions for Two-Way Communications

The Flanigan Wild Horse Herd Management Plan should be reviewed by representatives of the wild horse interests and livestock interests to obtain their critical evaluations of the proposal.

News media will be monitored for editorials regarding the actions taken.

Public comments received during the planning process regarding wild horse management in the Pyramid Planning Unit have been reviewed to determine attitudes and values at that time (comments were received in fall 1974).

News reports and editorials about the Tonopah (Stone Cabin Valley), Nevada round-up were reviewed to determine attitudes and values before, during, and after that action in summer and fall 1975.

ADDENDUM

Flanigan Wild Horse Herd Management Area Plan  
and  
Environmental Analysis Record

The Flanigan Wild Horse Herd Management Area Plan proposes permanent management facilities in the herd area.

It is the decision of the District Manager to use temporary facilities until such time as the United States Supreme Court rules on the constitutionality of Public Law 92-195.

Permanent facilities affected are:

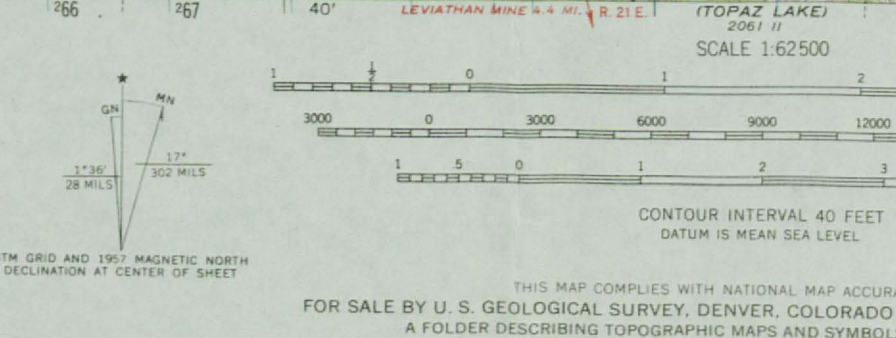
Upper adobe water trap  
East Virginia Peak wing trap  
Cottonwood Canyon wing trap  
13½ miles fence construction  
Marl Holding and Sorting corral

An interdisciplinary team has assessed the environmental impacts of the proposed action which includes the herd management area plan and the horse removal in the Pyramid Planning Unit. It is the decision of the interdisciplinary team that the substitution of temporary facilities for permanent facilities will not create any additional environmental impact.





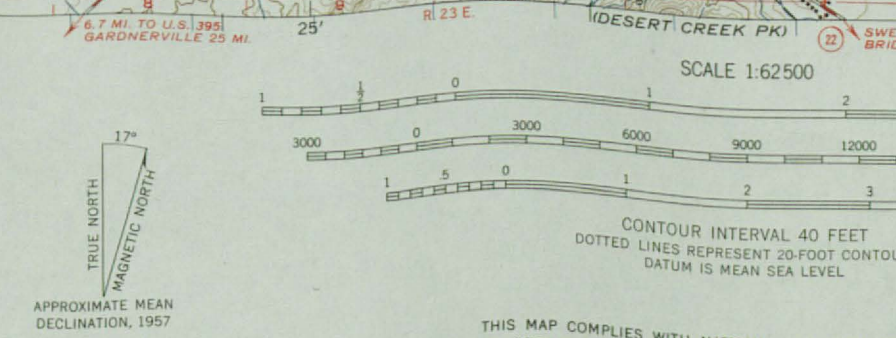
Maped, edited, and published by the Geological Survey  
Control by USGS and USC&GS  
Topography from aerial photographs by multiplex methods and  
by plane-table surveys 1957. Aerial photographs taken 1954.  
Polygonic projection. 1927 North American datum.  
10,000-foot grid based on Nevada coordinate system, west zone  
and California coordinate system, zone 2.  
1000-meter Universal Transverse Mercator grid ticks,  
zone 11, shown in blue.  
Dashed land lines indicate approximate locations.  
Unchecked elevations are shown in brown.



THIS MAP COMPLIES WITH NATIONAL MAP ACCURACY STANDARDS  
FOR SALE BY U. S. GEOLOGICAL SURVEY, DENVER, COLORADO 80225 OR WASHINGTON, D. C. 20242  
A FOLDER DESCRIBING TOPOGRAPHIC MAPS AND SYMBOLS IS AVAILABLE ON REQUEST

MT. SIEGEL, NEV.—CALIF.  
N3845—W11930715  
1957  
AMS 2061 1—SERIES V796

Maped, edited, and published by the Geological Survey  
Control by USGS and USC&GS  
Topography from aerial photographs by multiplex methods  
and by plane-table surveys 1957. Aerial photographs taken 1954.  
Polygonic projection. 1927 North American datum.  
10,000-foot grid based on Nevada coordinate system,  
west zone  
1000-meter Universal Transverse Mercator grid ticks,  
zone 11, shown in blue.  
Dashed land lines indicate approximate locations.  
Unchecked elevations are shown in brown.



THIS MAP COMPLIES WITH NATIONAL MAP ACCURACY STANDARDS  
FOR SALE BY U. S. GEOLOGICAL SURVEY, DENVER, COLORADO OR WASHINGTON, D. C.  
A FOLDER DESCRIBING TOPOGRAPHIC MAPS AND SYMBOLS IS AVAILABLE ON REQUEST

WELLINGTON, NEV.  
N3845—W1191515  
1957



# MAP # 4

1987-88

## UTILIZATION CLASS

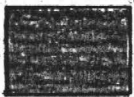
SEVERE  
(81-100%)



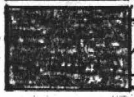
HEAVY  
(61-80%)



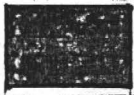
MODERATE  
(41-60%)



LIGHT  
(21-40%)

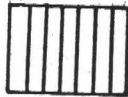


SLIGHT  
(0-20%)

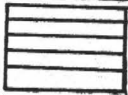


## TYPE USE

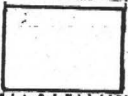
HORSE



CATTLE



DUAL



HERD MANAGEMENT AREA





# MAP # 4

1987-88

## UTILIZATION CLASS

SEVERE  
(81-100%)

HEAVY  
(61-80%)

MODERATE  
(41-60%)

LIGHT  
(21-40%)

SLIGHT  
(0-20%)

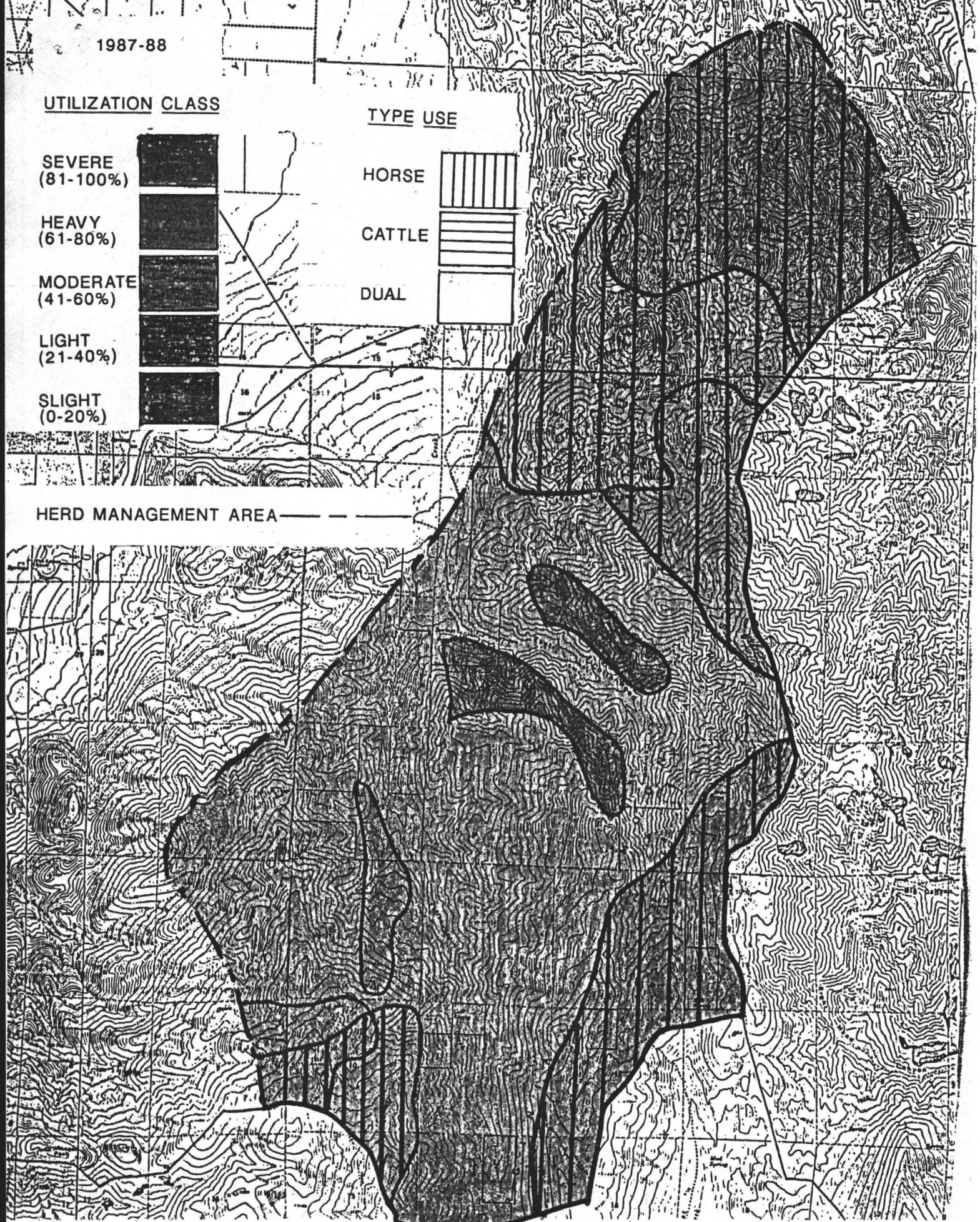
## TYPE USE

HORSE

CATTLE

DUAL

HERD MANAGEMENT AREA





# MAP # 4

1987-88

## UTILIZATION CLASS

SEVERE  
(81-100%)

HEAVY  
(61-80%)

MODERATE  
(41-60%)

LIGHT  
(21-40%)

SLIGHT  
(0-20%)

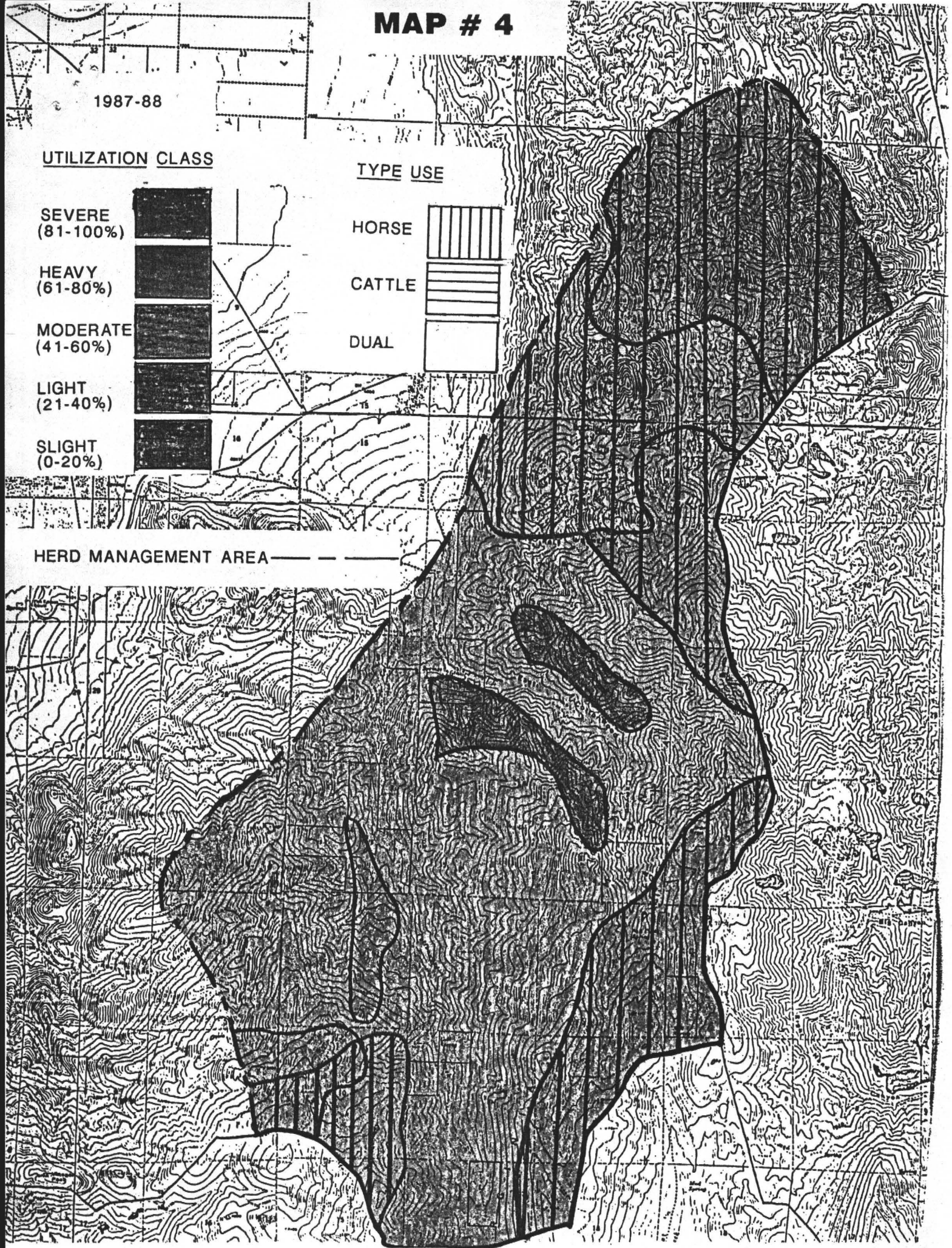
## TYPE USE

HORSE

CATTLE

DUAL

HERD MANAGEMENT AREA

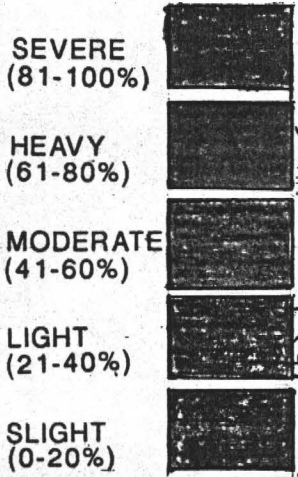




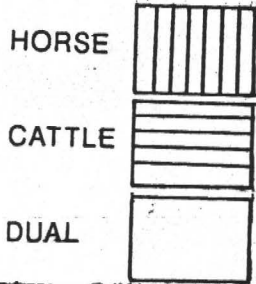
# MAP # 4

1987-88

## UTILIZATION CLASS



## TYPE USE



HERD MANAGEMENT AREA — — — — —





# MAP # 4

1987-88

## UTILIZATION CLASS

SEVERE  
(81-100%)

HEAVY  
(61-80%)

MODERATE  
(41-60%)

LIGHT  
(21-40%)

SLIGHT  
(0-20%)

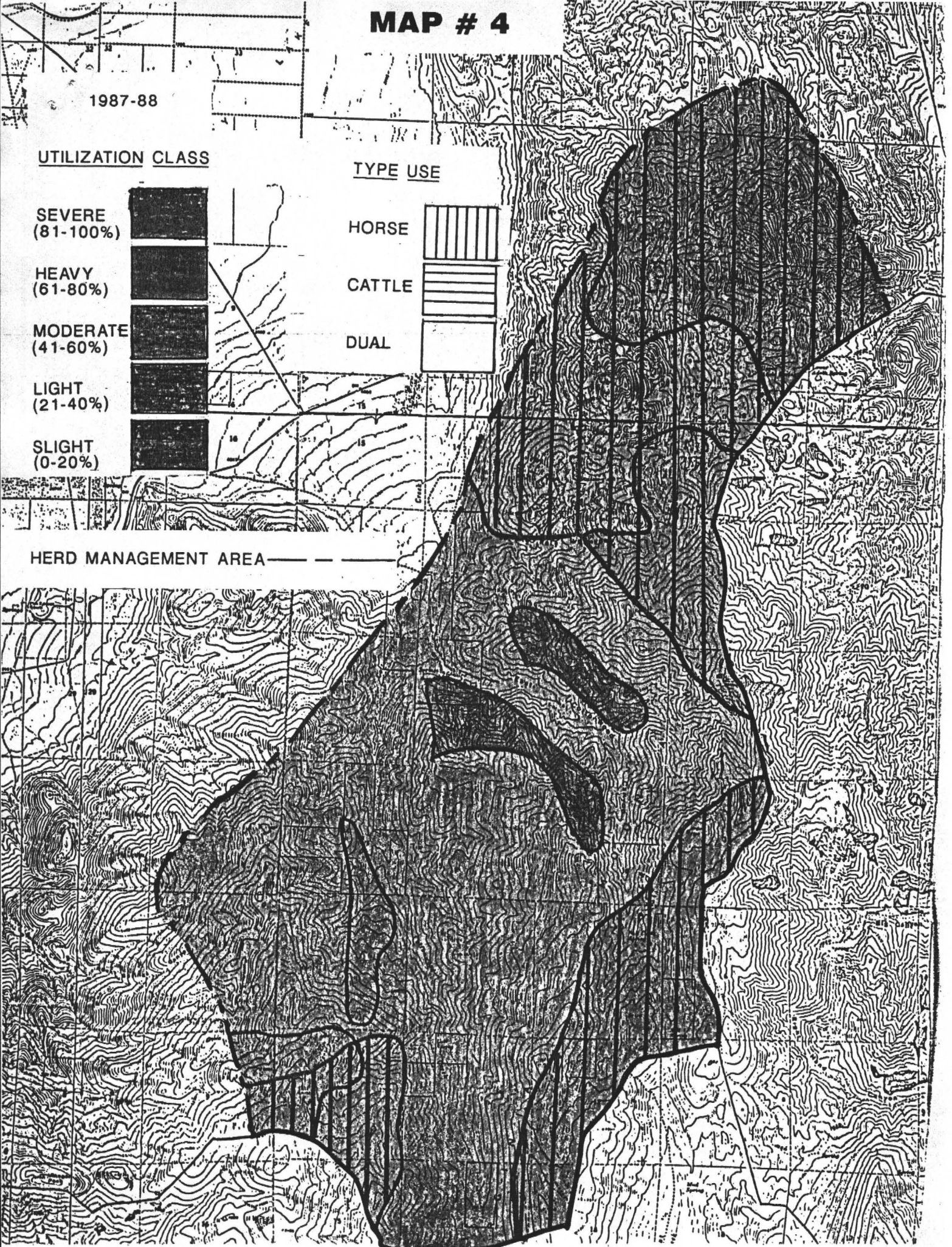
## TYPE USE

HORSE

CATTLE

DUAL

HERD MANAGEMENT AREA



FLANIGAN WILD HORSE HERD MANAGEMENT AREA PLAN  
PUBLIC PARTICIPATION PLAN

Publics Affected

A. Special Interest Groups

Nevada Cattlemen's Association  
Nevada Woolgrowers Association  
Carson City District licensees  
Wild Horse Organized Assistance, Inc.  
American Horse Protection Association, Inc.  
Feral Organized Assistance League, Inc.  
Sierra Club  
Nevada Outdoor Recreation Association  
Nevada Organization for Wildlife  
Nevada Wildlife Federation  
Audubon Society  
Pyramid Lake Indian Reservation

B. News Media

Nevada State Journal  
Reno Evening Gazette  
KOLO TV and Radio  
KCRL TV and Radio  
KTVN TV  
KOH Radio  
Other Regional and/or National media

C. Local, Regional, National citizens

D. Nevada Multiple Use Advisory Board

E. The State Multiple Use Advisory Committee on Federal Lands

F. National Advisory Board on Wild Horses and Burros

G. University of Nevada - Reno

College of Agriculture  
Division of Agricultural and Resource Economics  
Division of Plant, Soil, and Water Science  
Division of Renewable Natural Resources  
Division of Animal Science

H. Government Agencies

Department of the Interior  
Bureau of Land Management  
Washington, D. C. Office  
Nevada State Office  
Carson City District  
Other Nevada BLM Districts

State of Nevada  
Governor's Office  
Department of Agriculture  
Department of Fish and Game

Area Council of Governments  
Regional Planning Commission

Long Range Goals

To develop public support and commitment to the following management objectives which were identified in the BLM planning system for the Pyramid Planning Unit:

1. Maintain wild, free-roaming horses in the Pyramid Planning Unit by controlling their numbers and providing adequate forage to insure their survival.
2. Reduce the demand for forage by domestic animals, wildlife, and wild horses to meet the supply as determined by field studies.
3. Improve the range condition.
4. Establish a manageable wild horse herd in a compatible area in compliance with the Wild, Free-Roaming Horse and Burro Act.

### Short Range Goals

To capture, remove, and/or relocate horses from the entire Pyramid Planning Unit to the Flanigan Wild Horse Herd Management Area in accordance with the Flanigan Wild Horse Herd Management Plan dated February 12, 1976.

To inform the public of the need and rationale for these actions.

To allow the public to observe the horses without creating management difficulties or safety hazards.

To provide the opportunity for claimed and/or branded horses to be identified and removed from the wild horse herd by their owners.

To submit timely news releases regarding the round-up and subsequent actions.

To fully inform those range users and the special interests most affected by the proposed action in advance of the round-up.

### Courses of Action

Meetings, letters of intent, and/or telephone communications will be used to inform the appropriate representatives of the state and federal agencies of our herd management plan and the required round-up of wild horses.

The contacts established will be maintained throughout the round-up process.

News releases will be issued describing the actions and their results as appropriate.

### Timetable of Actions

Prior news releases have indicated that horses in the Pyramid Planning Unit will be managed and reductions in their numbers made. These releases were summations of planning decisions made in 1974.

Land Use Guides describing the planning system decisions for the Pyramid - Long Valley Planning Units (including the need for a horse management plan) were mailed to the Carson City District publics in December 1975.



During the development of the herd management plan, state agency officials and special interest representatives (WHOA, range - users, indians) should be notified of the proposed action.

Upon approval of the Environmental Analysis Record, a timetable for the required actions should be developed and the special interests involved should be notified of the schedule.

News releases should be issued, as warranted by the interest generated by the actions, informing the public of our progress.

An announcement should be made when the horses are available for viewing by the public (if in a Reno holding corral).

Follow-up news releases should be issued when round-up, adoption, etc., has been completed to summarize the events and re-emphasize the long range results expected from the actions.

#### Communication Methods

1. Personal Contacts with  
    special interests  
    government agency officials  
    news media
2. Letters, news releases

#### Provisions for Two-Way Communications

The Flanigan Wild Horse Herd Management Plan should be reviewed by representatives of the wild horse interests and livestock interests to obtain their critical evaluations of the proposal.

News media will be monitored for editorials regarding the actions taken.

Public comments received during the planning process regarding wild horse management in the Pyramid Planning Unit have been reviewed to determine attitudes and values at that time (comments were received in fall 1974).

News reports and editorials about the Tonopah (Stone Cabin Valley), Nevada round-up were reviewed to determine attitudes and values before, during, and after that action in summer and fall 1975.

ADDENDUM

Flanigan Wild Horse Herd Management Area Plan  
and  
Environmental Analysis Record

The Flanigan Wild Horse Herd Management Area Plan proposes permanent management facilities in the herd area.

It is the decision of the District Manager to use temporary facilities until such time as the United States Supreme Court rules on the constitutionality of Public Law 92-195.

Permanent facilities affected are:

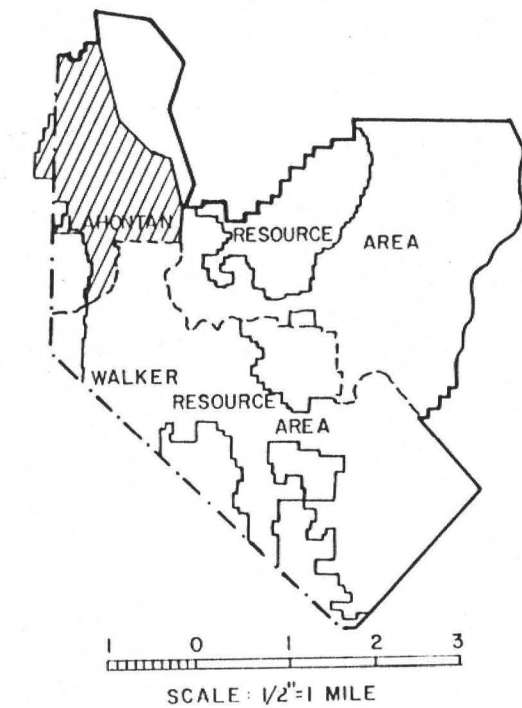
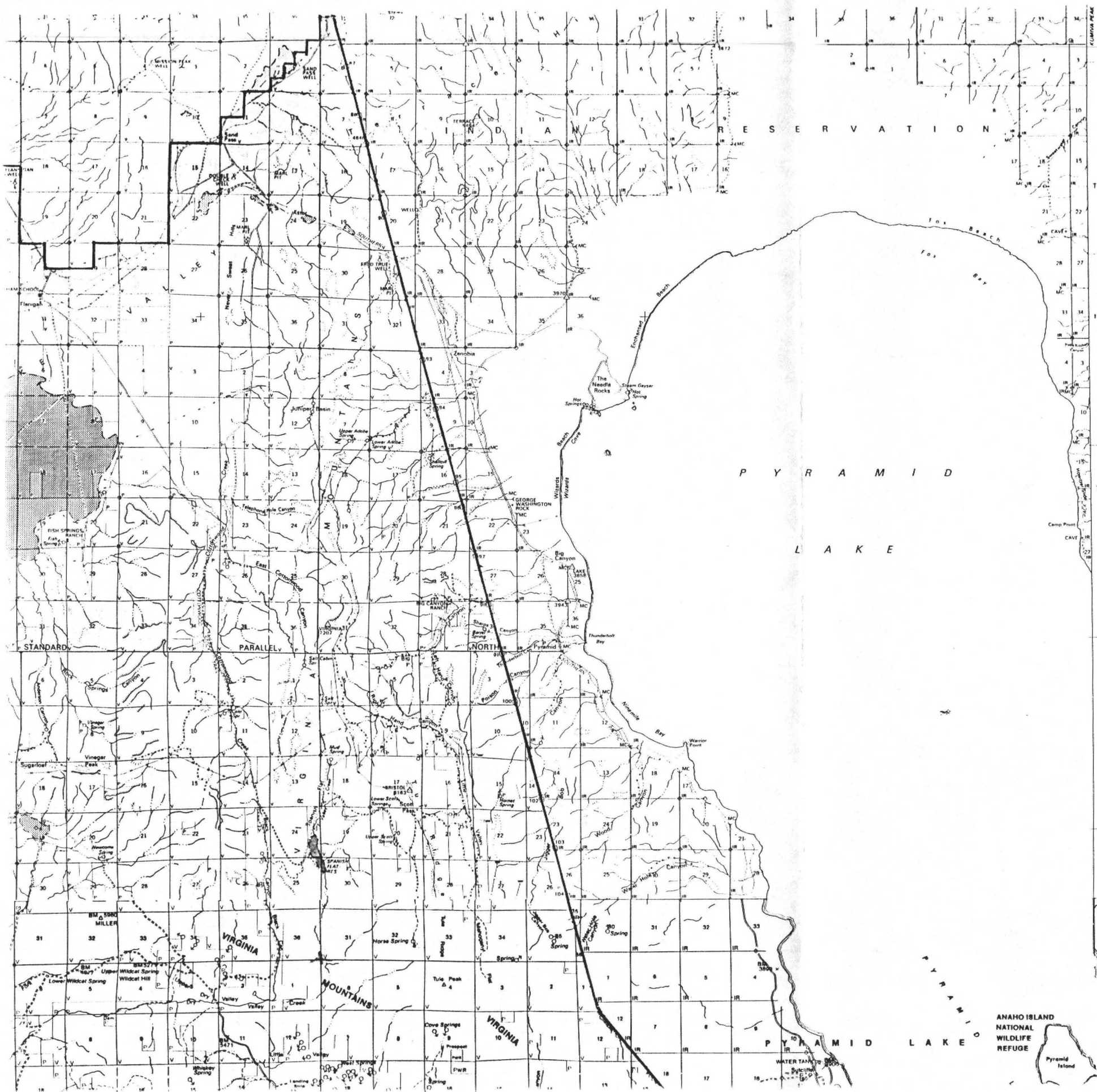
Upper adobe water trap  
East Virginia Peak wing trap  
Cottonwood Canyon wing trap  
13½ miles fence construction  
Marl Holding and Sorting corral

An interdisciplinary team has assessed the environmental impacts of the proposed action which includes the herd management area plan and the horse removal in the Pyramid Planning Unit. It is the decision of the interdisciplinary team that the substitution of temporary facilities for permanent facilities will not create any additional environmental impact.

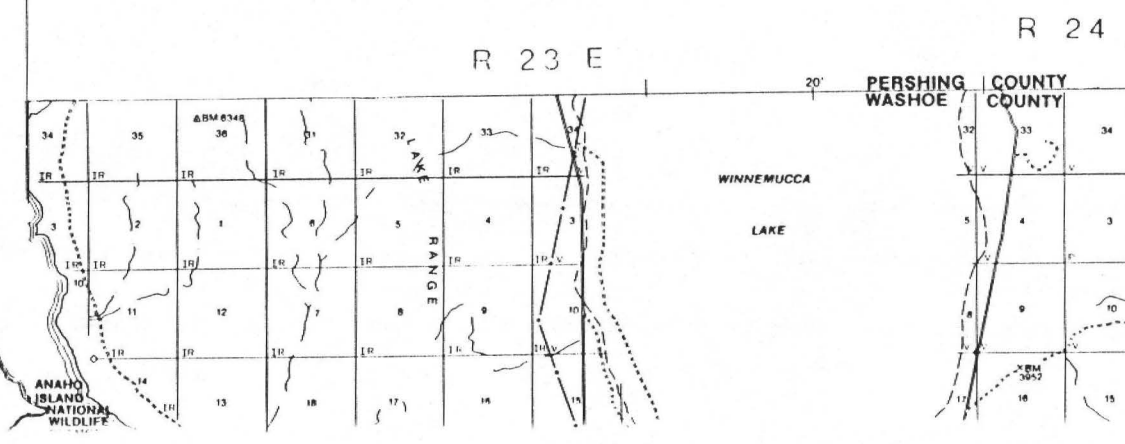




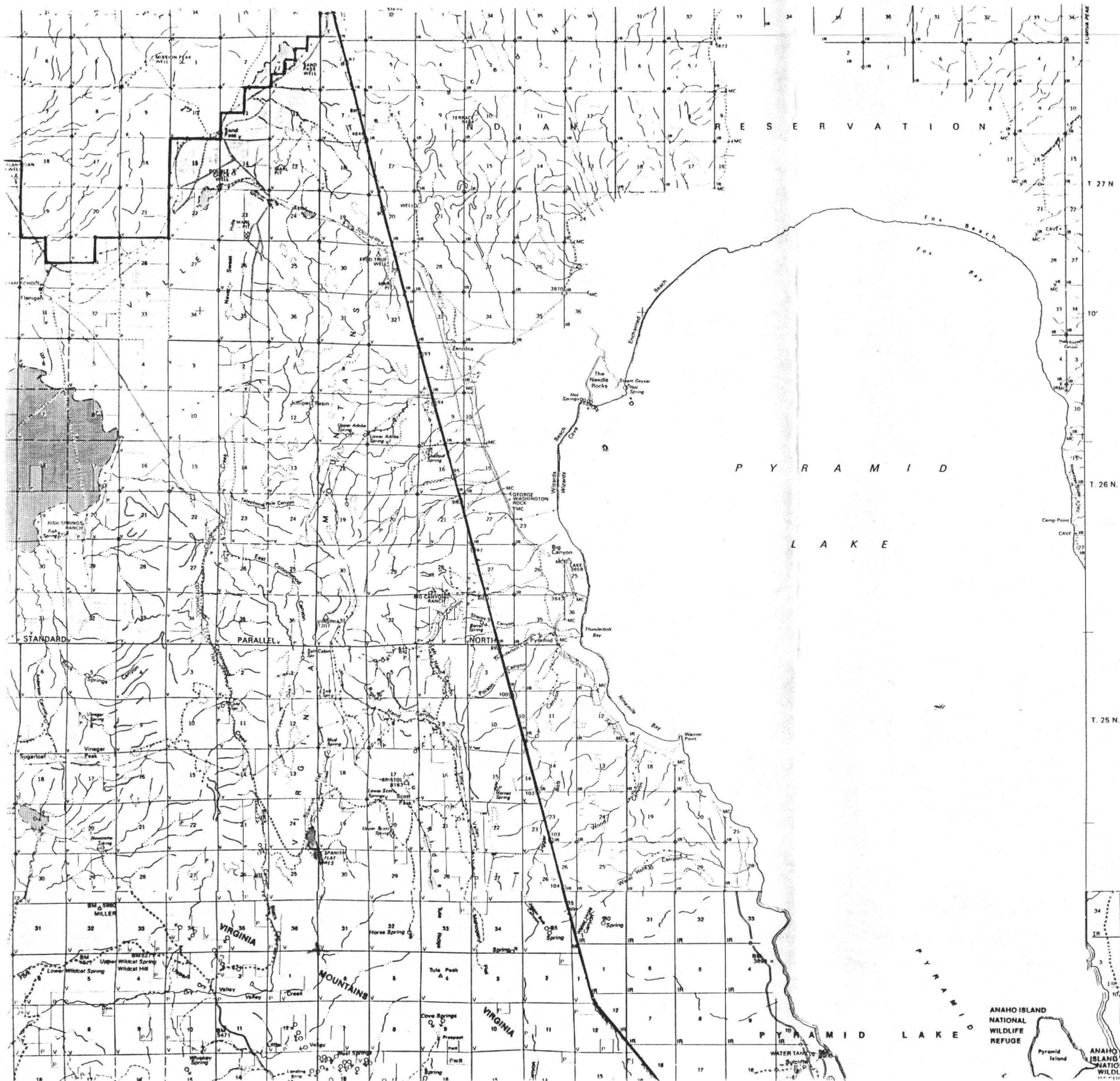




CARSON CITY DISTRICT  
 LAHONTAN RESOURCE AREA  
 PYRAMID-LONG VALLEY  
 PLANNING UNIT  
 0306 - 0321



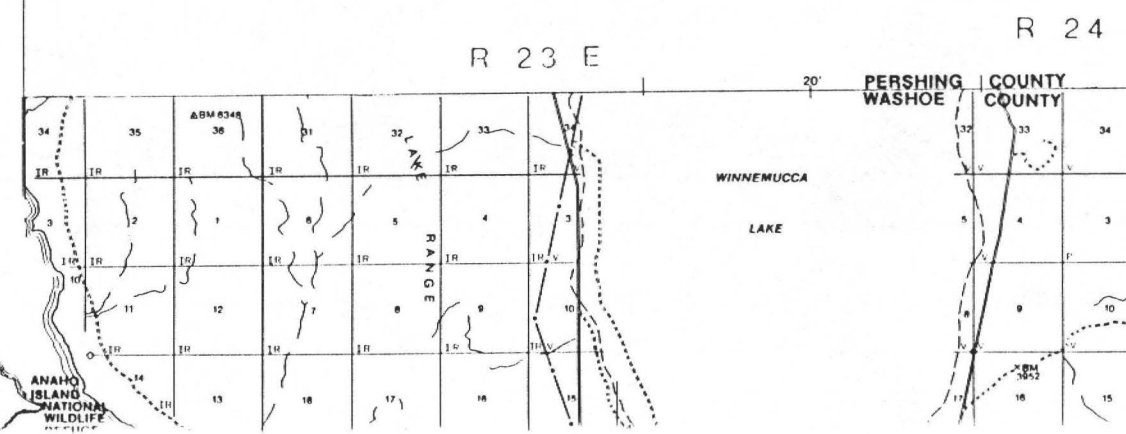




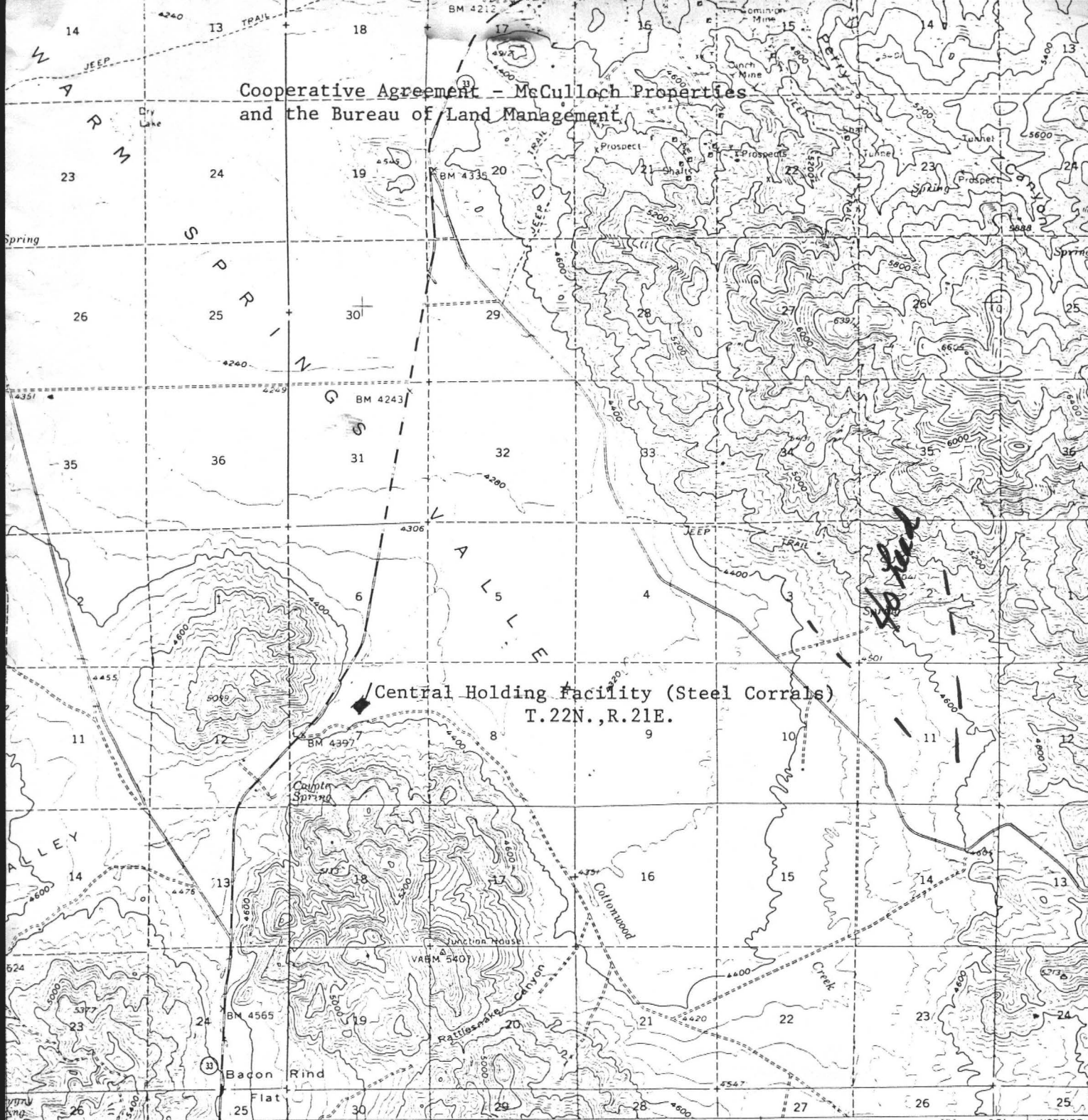
LAHONTAN RESOURCE AREA  
WALKER RESOURCE AREA

1 0 1 2 3  
SCALE: 1/2" = 1 MILE

**CARSON CITY DISTRICT  
LAHONTAN RESOURCE AREA  
PYRAMID-LONG VALLEY  
PLANNING UNIT  
0306 - 0321**



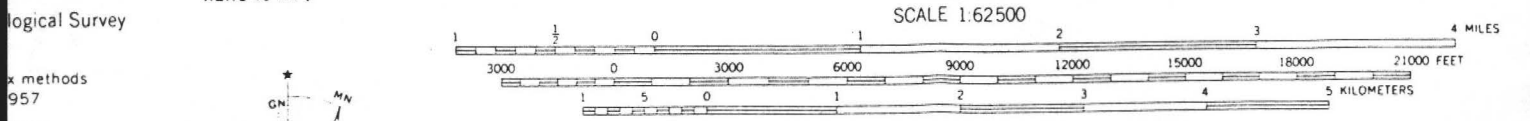
Cooperative Agreement - McCulloch Properties  
and the Bureau of Land Management



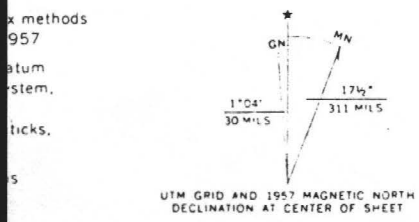
*Handwritten:* 40 feet

Central Holding Facility (Steel Corrals)  
T.22N., R.21E.

RENO SKY RANCH 6.8 MI. RENO 19 MI. (SPANISH SPRINGS VALLEY) 2063 II R. 21E. INTERIOR



CONTOUR INTERVAL 40 FEET  
DOTTED LINES REPRESENT 20-FOOT CONTOURS  
DATUM IS MEAN SEA LEVEL

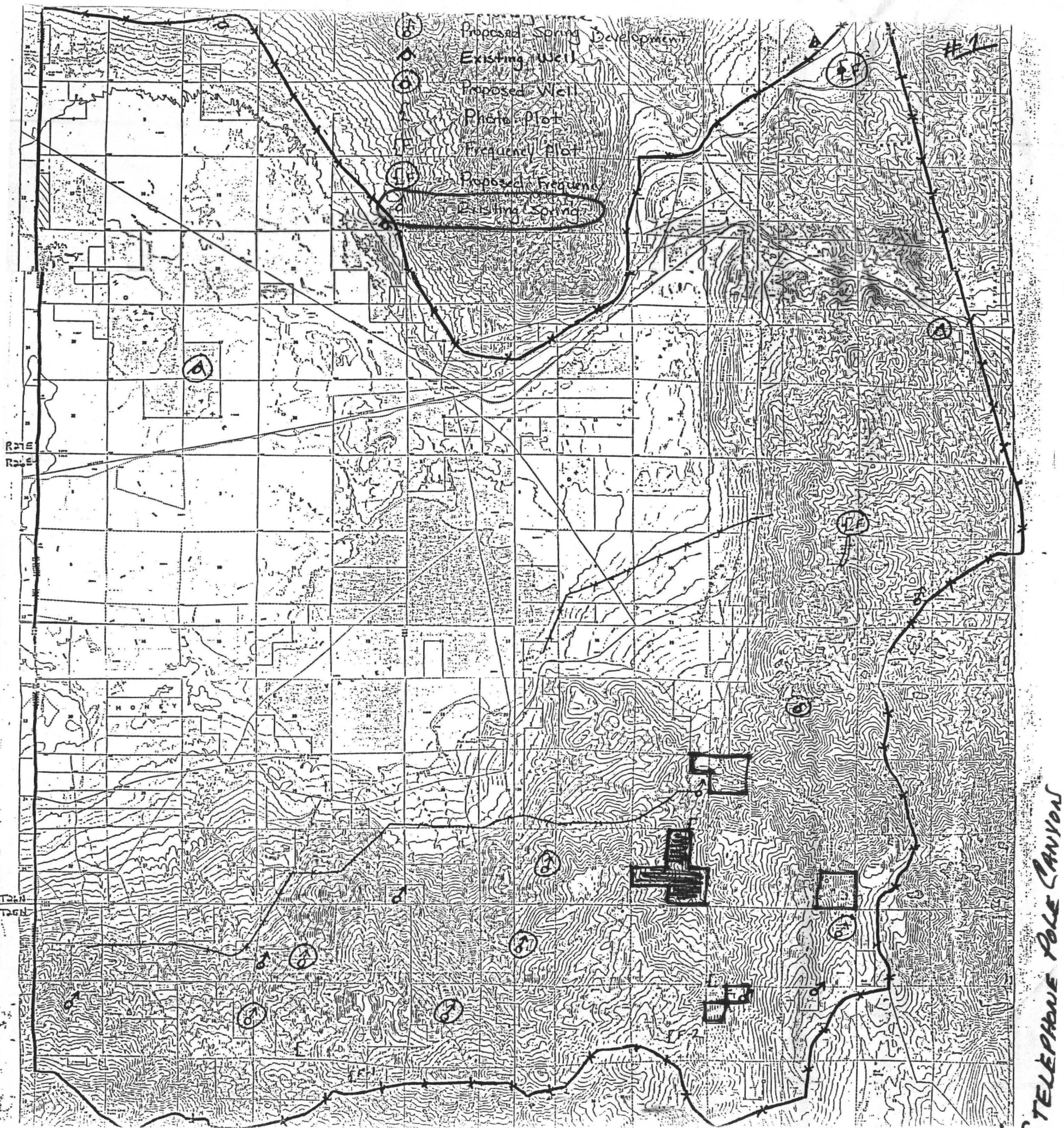


UTM GRID AND 1957 MAGNETIC NORTH DECLINATION AT CENTER OF SHEET

*Handwritten:* 55 Flanigan  
119 Palomino

THIS MAP COMPLIES WITH NATIONAL MAP ACCURACY STANDARDS  
FOR SALE BY U. S. GEOLOGICAL SURVEY, DENVER 25, COLORADO OR WASHINGTON 25, D. C.  
A FOLDER DESCRIBING TOPOGRAPHIC MAPS AND SYMBOLS IS AVAILABLE ON REQUEST





NOTE WHERE EXISTING SPRINGS ARE COMPARED TO N OF TELEPHONE POLE CANYON

Flanigan Wild Horse Herd Management Area Plan

Environmental Analysis Record

The Flanigan Wild Horse Herd Management Area Plan provides permanent management facilities for the herd area.

Under the provisions of the Act, it is required to use temporary facilities until such time as permanent facilities are constructed on the land.

FLANIGAN WILD HORSE HERD

MANAGEMENT AREA PLAN

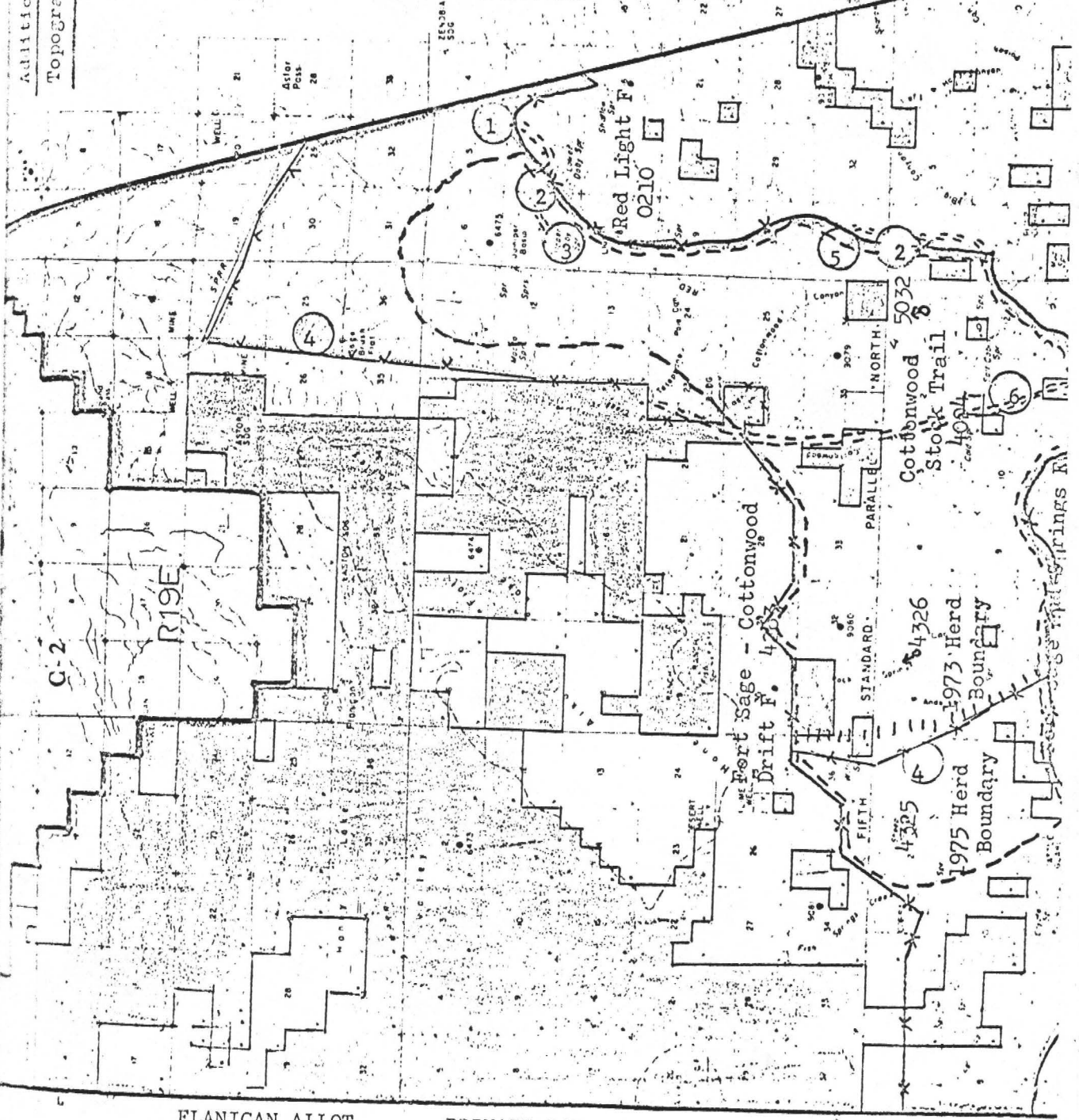
The temporary facilities will be used until such time as permanent facilities of the Flanigan Wild Horse Herd Management Area Plan and the provisions of the Act are met. The description of the list of temporary facilities and the location of temporary facilities will not cause any adverse environmental effects.



Additional  
Topographic Map

PROPOSED PERMANENT FACILITIES (PURPLE)

- 1 - MARL HOLDING & SORTING CORRAL & PIPELINE
- 2 - TRAIL CONSTRUCTION
- 3 - UPPER ADOBE SP. WATER TRAP
- 4 - FENCE CONSTRUCTION
- 5 - E. VIRGINIA PEAK WING TRAP
- 6 - COTTONWOOD CANYON WING TRAP



FLANIGAN ALLOT.  
BOUNDARY (RED)

PRIVATE LANDS  
(GREEN)

NATIONAL RESOURCE  
LANDS (WHITE)

7 N.

5 N.

H. Support

1. Fire Protection

Fire protection is critical. Loss of forage due to fire may require a reduction of the herd in order to maintain the condition and trend of the area. ✓

2. Lands

Land exchanges should be considered when lands are offered by either Earl Batteate or Helen Garboe (present land owners).

3. Emergency Feeding

Emergency feeding of horses has been considered when the winter forage situation for herds throughout the west becomes critical. Emergency feeding for the Flanigan Herd should not be considered unless the survival of the entire herd appears to be in jeopardy (possibly below 20 animals).

I. Signatures

Prepared by:

Pardee Bardwell, Wildlife Biologist, Lahontan R.A.

Chris Erb, Range Conservationist, Lahontan R.A.

Bill R. Stewart, Range Technician, Lahontan R.A.

Concurred by:

Norman L. Murray  
Norman L. Murray  
Area Manager, Lahontan R.A.

2-11-76  
Date

Approved by:

L. Paul Applegate  
L. Paul Applegate, District Manager  
Carson City District

2-12-76  
Date

\_\_\_\_\_  
E. I. Rowland  
State Director, Nevada

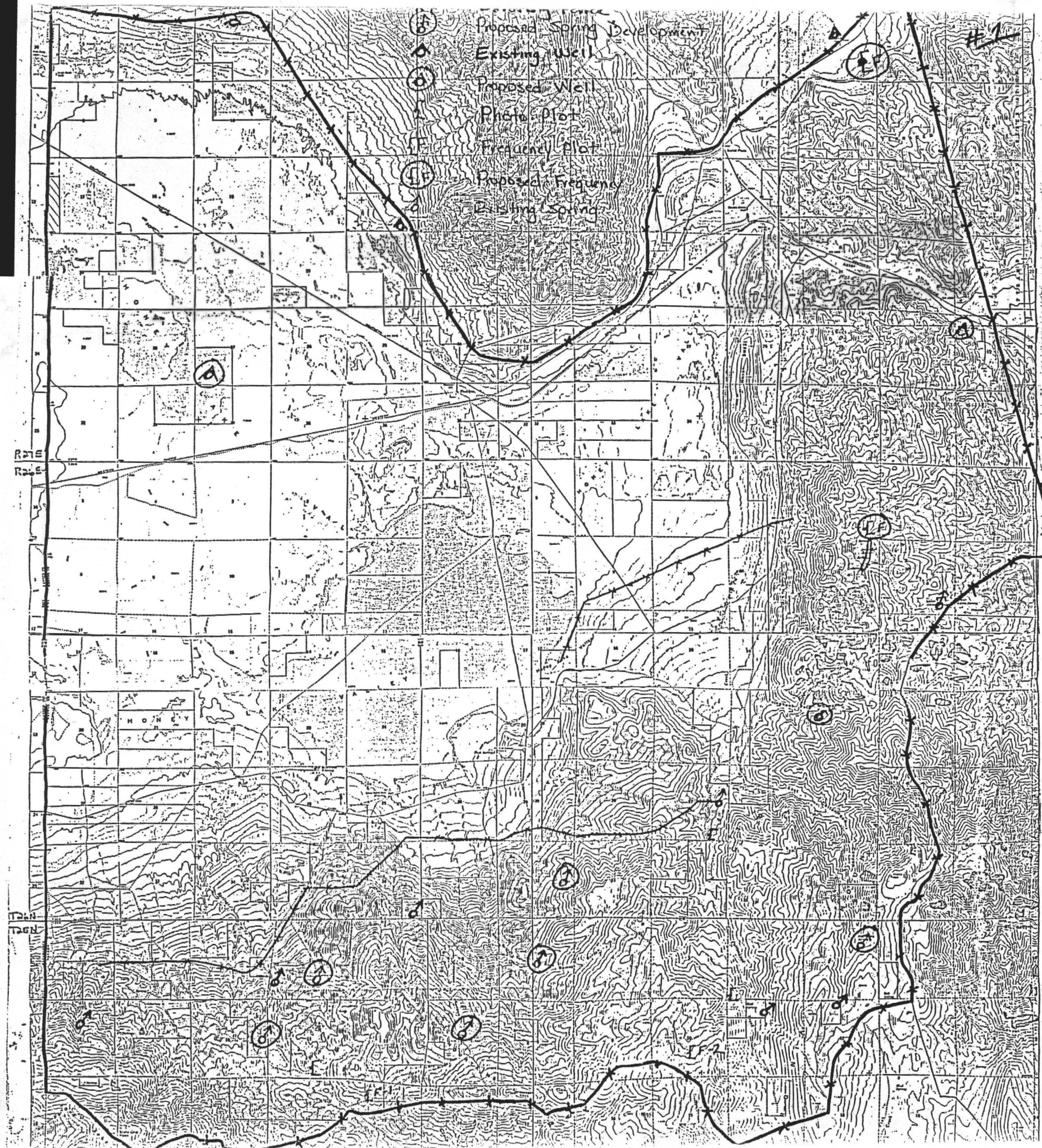
\_\_\_\_\_  
Date

Table 2. Flanigan Herd Composition  
 Adapted from aerial survey - 2/1973

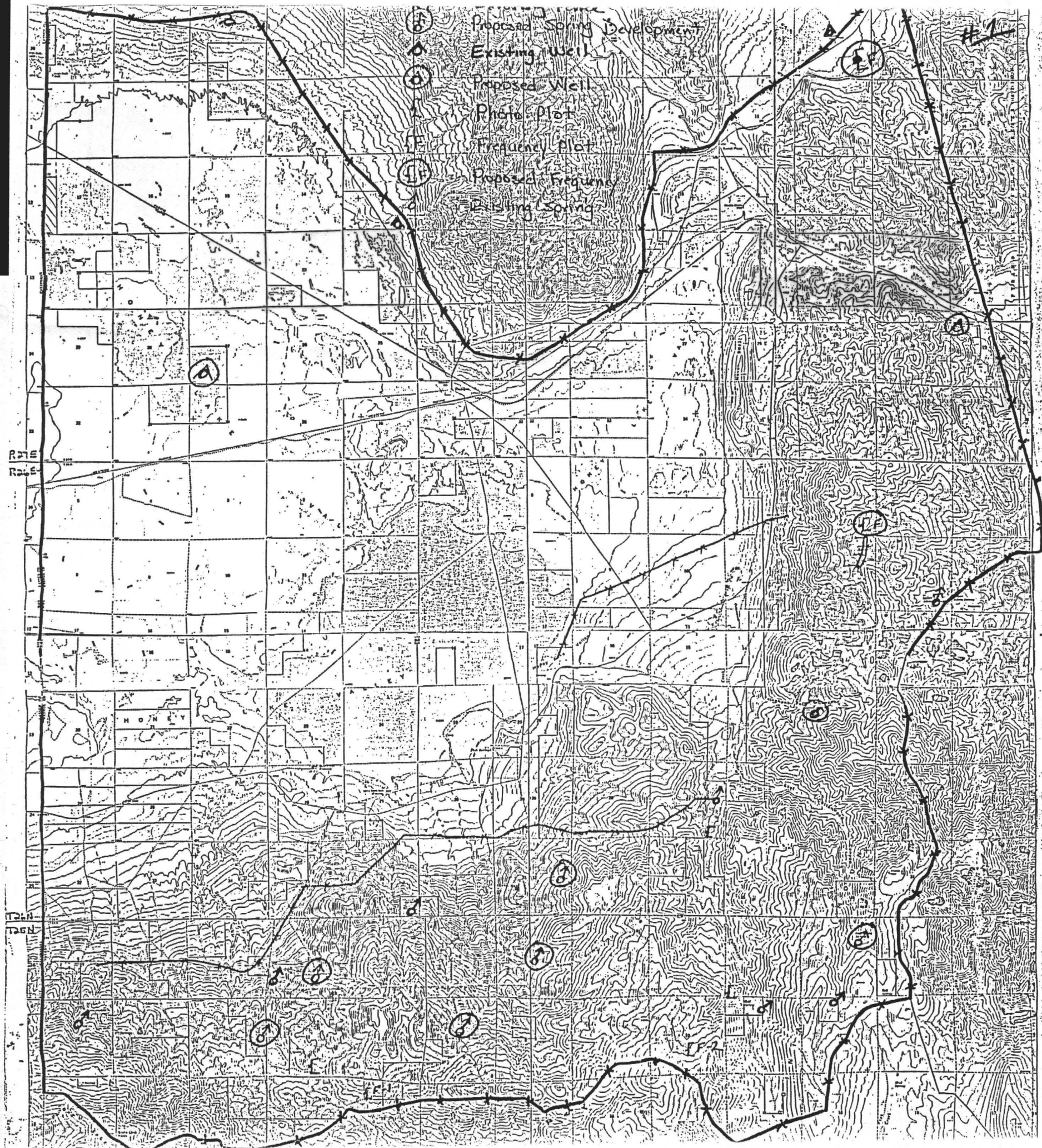
| Band No. | Total | Studs | Colts | Mares | Yearlings | Unknown |
|----------|-------|-------|-------|-------|-----------|---------|
| 1        | 14    | 1     | 4     | 9     | 0         |         |
| 2        | 3     | 3     | 0     | 0     | 0         |         |
| 3        | 9     | 1     | 2     | 6     | 0         |         |
| 4        | 12    | 1     | 2     | 6     | 3         |         |
| 5        | 10    | 1     | 3     | 4     | 2         |         |
| 6        | 2     | 2*    | 0     | 0     | 0         |         |
| 7        | 3     | 3     | 0     | 0     | 0         |         |
| 8        | 12    | 1     | 2     | 6     | 3         |         |
| 9        | 4     | 1     | 1     | 2     | 0         |         |
| 10       | 4     | 4     | 0     | 0     | 0         |         |
| 11       | 8     | 1     | 3     | 4     | 0         |         |
| 12       | 5     | 1     | 2     | 2     | 0         |         |
| 13       | 8     | 1     | 3     | 4     | 0         |         |
| 14       | 2     | 2     | 0     | 0     | 0         |         |
| 96       | 23    | 22    | 43    | 8     | 0         |         |

\*Located on East side of Division Fence between Flanigan and Big Canyon Allotments

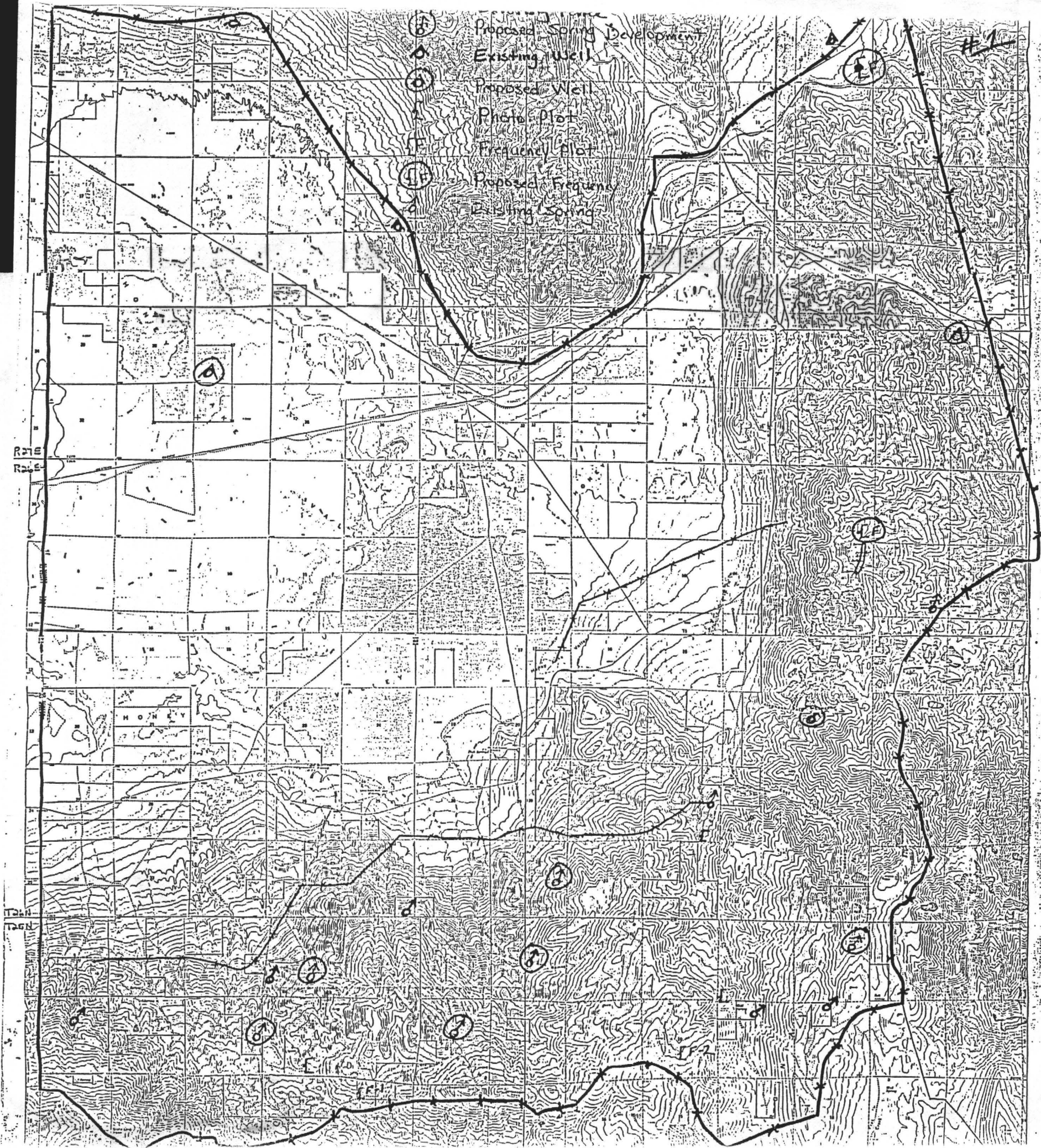










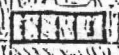




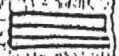
117

Type Use

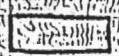
Horse



Cattle



Dual



Utilization Class

Severe



Heavy



Moderate



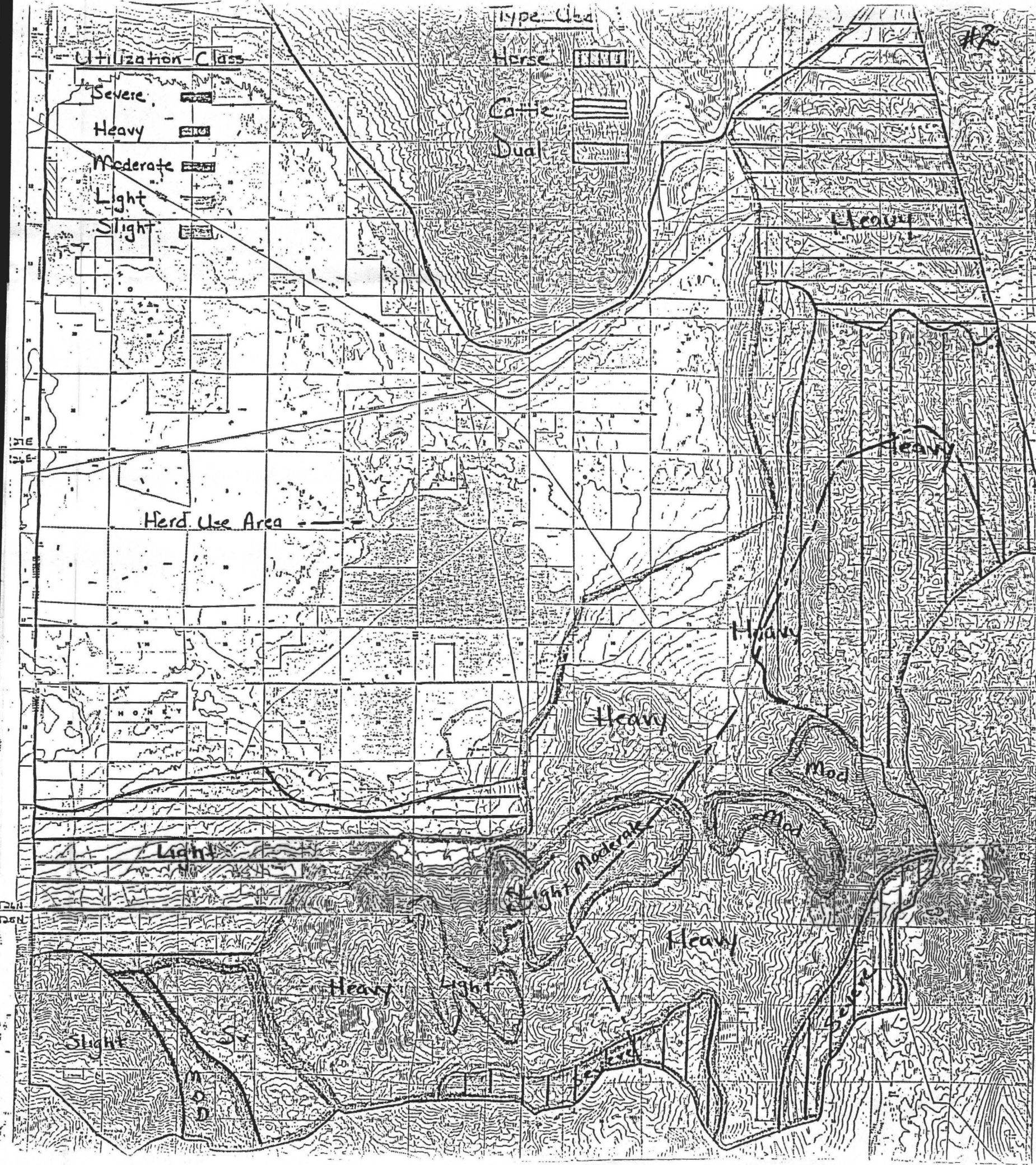
Light



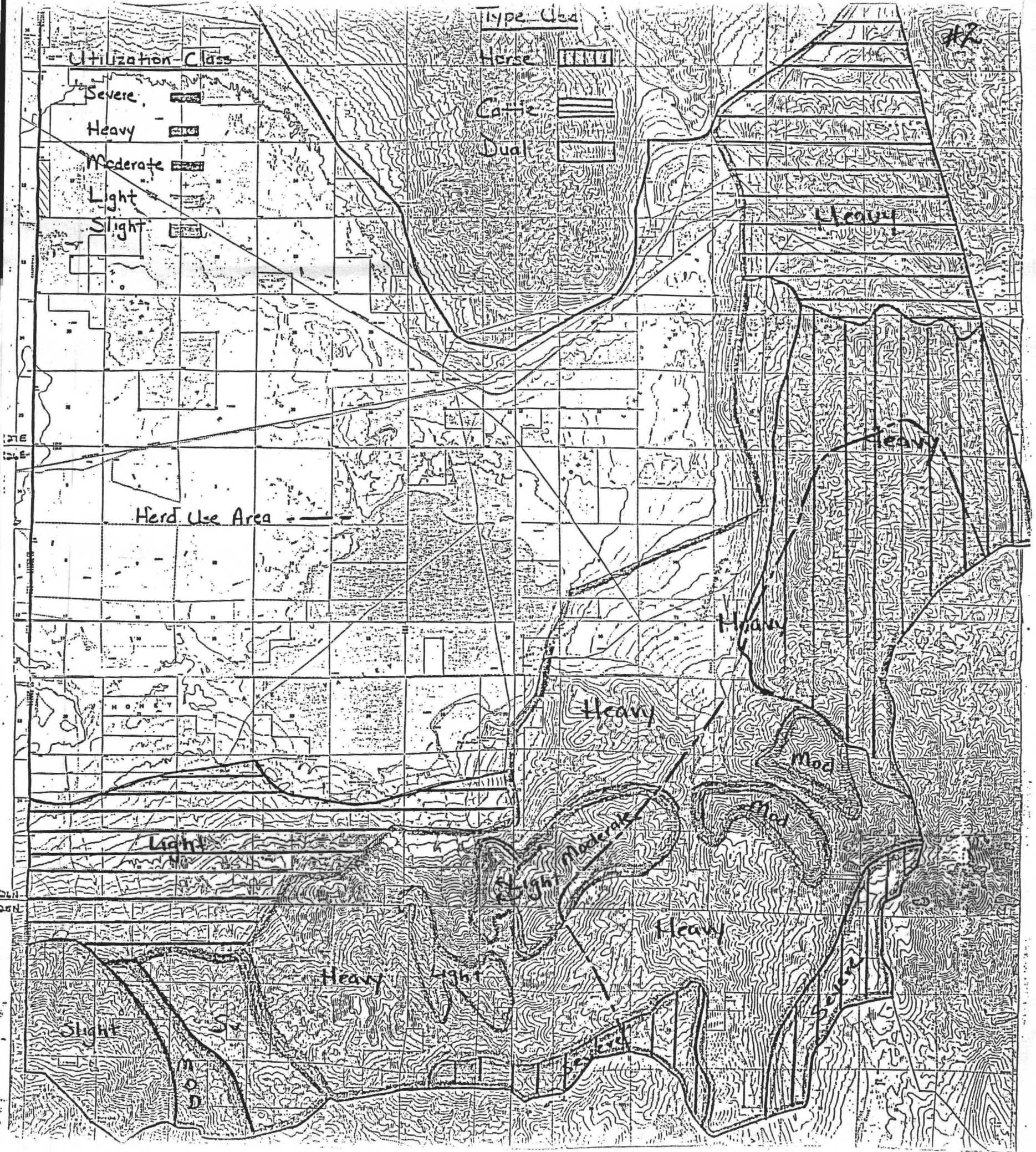
Slight



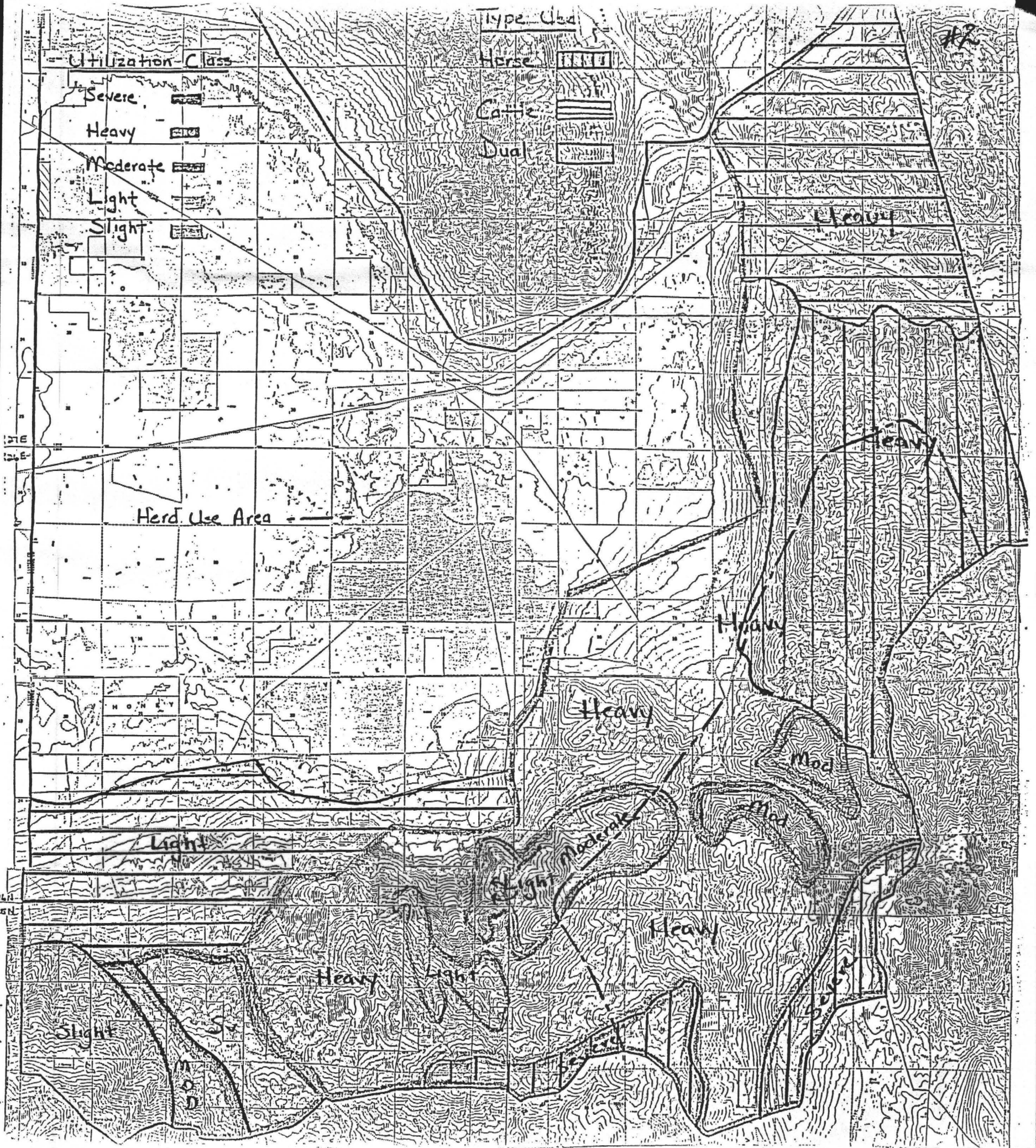
Herd Use Area













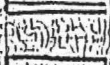
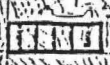
#12

Type Use

Horse

Cattle

Dual



Utilization Class

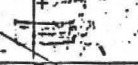
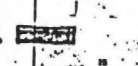
Severe

Heavy

Moderate

Light

Slight



Herd Use Area

Heavy

Heavy

Heavy

Heavy

Mod

Mod

Light

Moderate

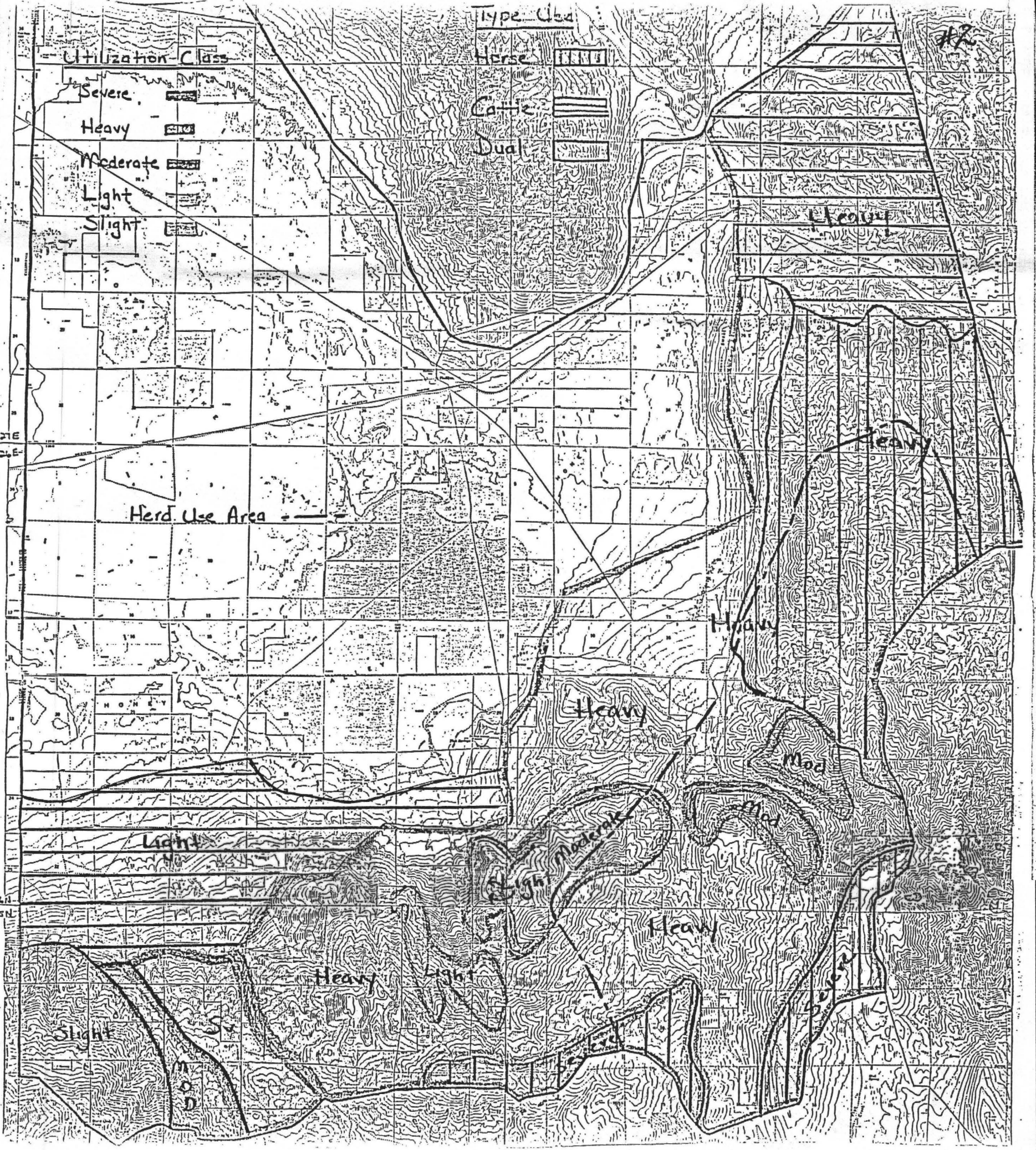
Heavy

Heavy

Light

Slight

MOD





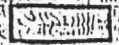
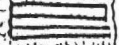
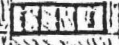
#12

Type Use

Horse

Cattle

Dual



Utilization Class

Severe

Heavy

Moderate

Light

Slight



Herd Use Area

Heavy

Heavy

Heavy

Heavy

Mod

Mod

Light

Mod

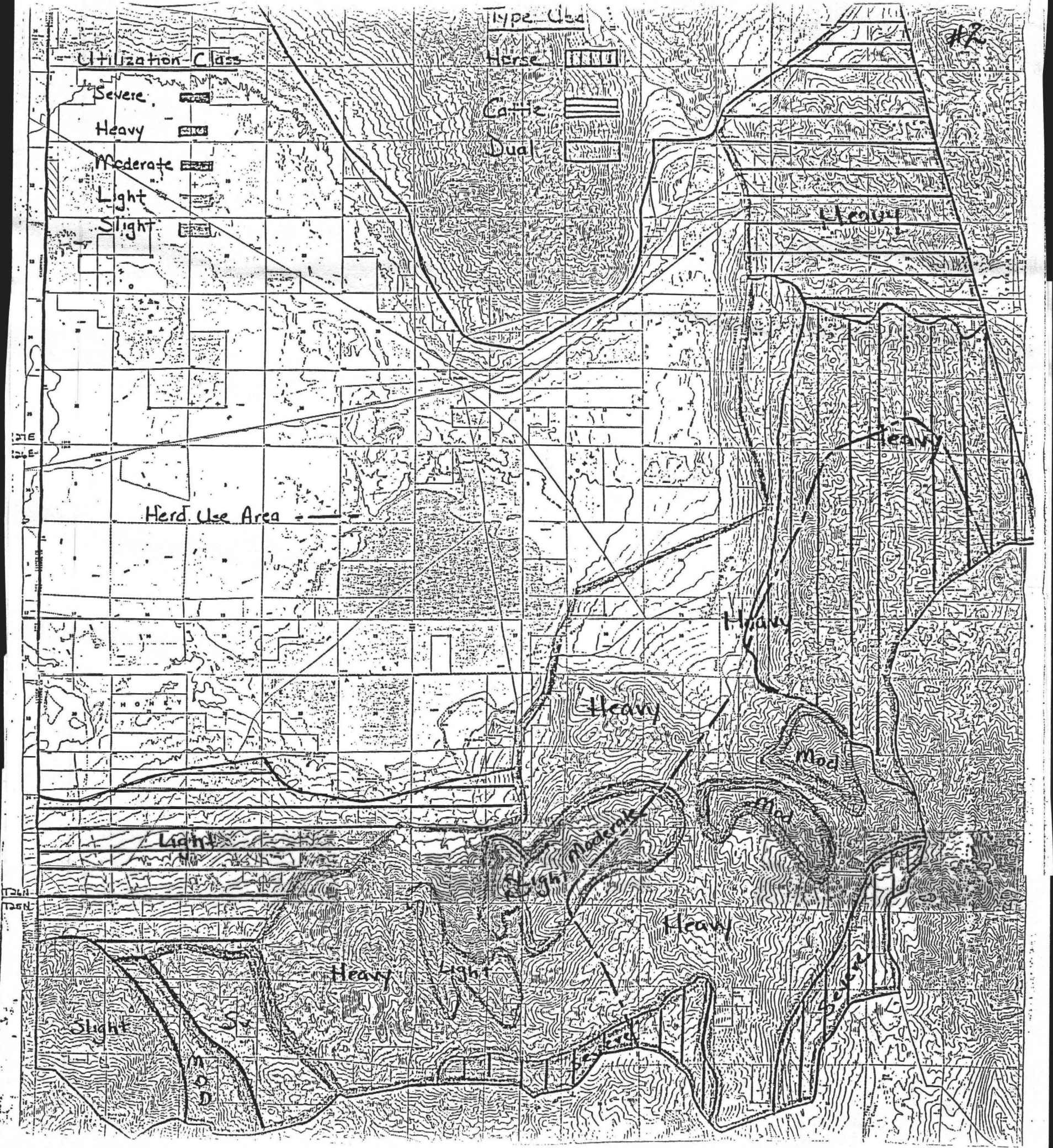
Heavy

Heavy

Light

Slight

MOD



ii. Support

1. Fire Protection

Fire protection is critical. Loss of forage due to fire may require a reduction of the herd in order to maintain the condition and trend of the area. ✓

2. Lands

Land exchanges should be considered when lands are offered by either Earl Batteate or Helen Garboe (present land owners).

3. Emergency Feeding

Emergency feeding of horses has been considered when the winter forage situation for herds throughout the west becomes critical. Emergency feeding for the Flanigan Herd should not be considered unless the survival of the entire herd appears to be in jeopardy (possibly below 20 animals).

i. Signatures

Prepared by:

Pardee Bardwell, Wildlife Biologist, Lahontan R.A.

Chris Erb, Range Conservationist, Lahontan R.A.

Bill R. Stewart, Range Technician, Lahontan R.A.

Concurred by:

Norman L. Murray  
Norman L. Murray  
Area Manager, Lahontan R.A.

2-11-76

Date

Approved by:

L. Paul Applegate  
L. Paul Applegate, District Manager  
Carson City District

2-12-76

Date

\_\_\_\_\_  
E. I. Rowland  
State Director, Nevada

\_\_\_\_\_  
Date



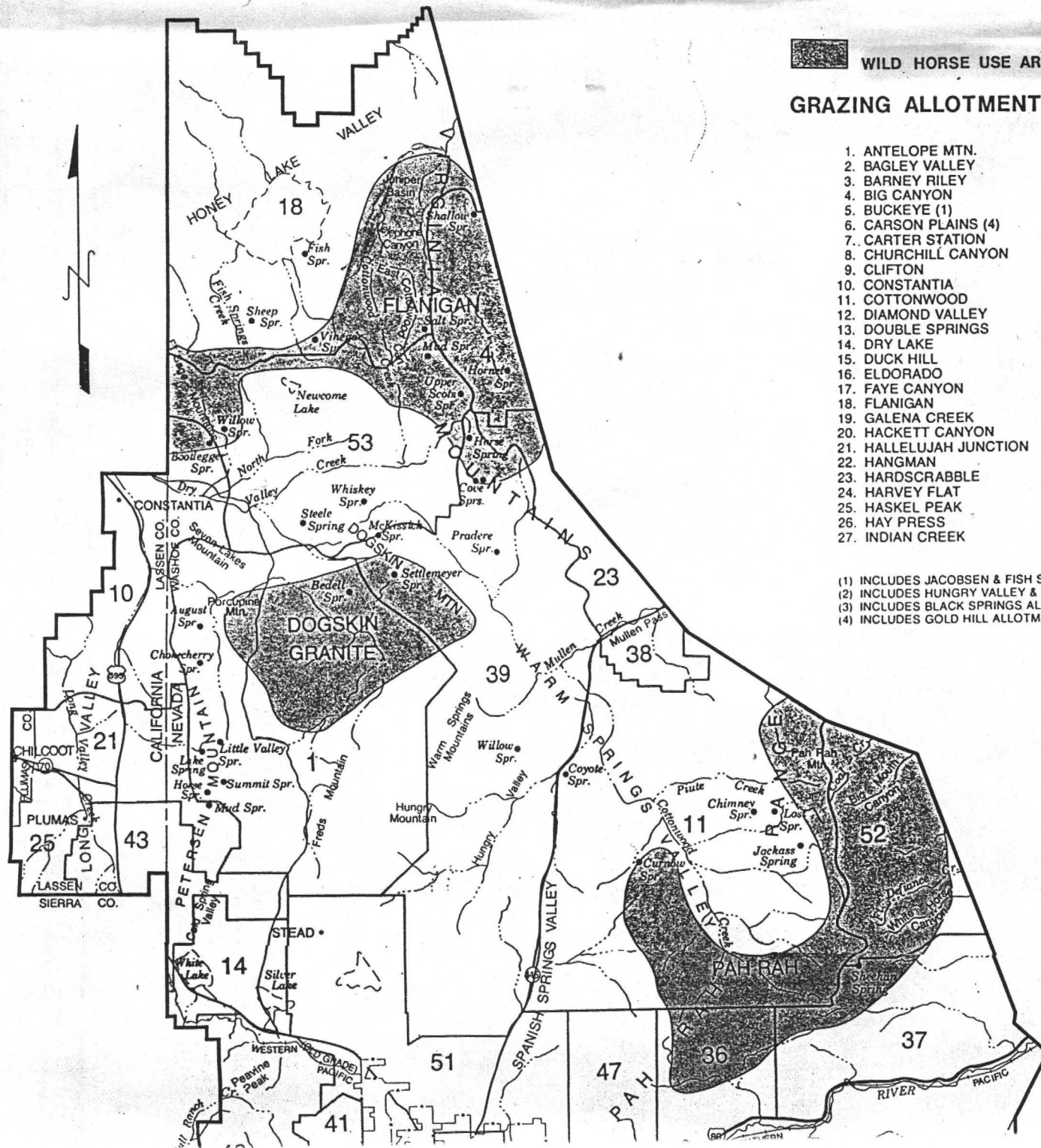


WILD HORSE USE AREAS

### GRAZING ALLOTMENTS

1. ANTELOPE MTN.
2. BAGLEY VALLEY
3. BARNEY RILEY
4. BIG CANYON
5. BUCKEYE (1)
6. CARSON PLAINS (4)
7. CARTER STATION
8. CHURCHILL CANYON
9. CLIFTON
10. CONSTANTIA
11. COTTONWOOD
12. DIAMOND VALLEY
13. DOUBLE SPRINGS
14. DRY LAKE
15. DUCK HILL
16. ELDORADO
17. FAYE CANYON
18. FLANIGAN
19. GALENA CREEK
20. HACKETT CANYON
21. HALLELUJAH JUNCTION
22. HANGMAN
23. HARDCRABBLE
24. HARVEY FLAT
25. HASKEL PEAK
26. HAY PRESS
27. INDIAN CREEK
28. INDIAN HILLS
29. JUMBO
30. KINGS CANYON
31. KOCK DITCH
32. LUTHER CREEK
33. MILLBERRY CANYON
34. MILL CANYON
35. MUD LAKE
36. MUSTANG
37. OLINGHOUSE
38. PAH RAH
39. PAIUTE CANYON (2)
40. PEAVINE MTN. (3)
41. PEAVINE WATERSHED
42. PINE NUT
43. PLUMAS STATION
44. PRISON HILL
45. RAWE PEAK
46. SAND CANYON
47. SPANISH SPRINGS
48. SPRATT CREEK
49. SUNRISE
50. WADE VALLEY
51. WEDEKIND
52. WHITE HILLS
53. WINNEMUCCA RANCH

- (1) INCLUDES JACOBSEN & FISH SPRS. ALLOTMENTS
- (2) INCLUDES HUNGRY VALLEY & SHOVEL SPRS. ALLOTMENTS
- (3) INCLUDES BLACK SPRINGS ALLOTMENT
- (4) INCLUDES GOLD HILL ALLOTMENT





# United States Department of the Interior

BUREAU OF LAND MANAGEMENT  
CARSON CITY DISTRICT OFFICE  
1050 E. William St., Suite 335  
Carson City, Nevada 89701

*Background  
Info*

*1976*

## Flanigan Herd Use Area

### General Information

The Flanigan Herd Use Area is located entirely within the Flanigan Allotment, which is situated approximately 60 miles north of Reno in the Virginia Mountains. The wild horses range over the entire winter and summer range running from the north end of the Virginia Mountains to the Susanville District Boundary. The herd use area encompasses all of the BLM acreage of 56,639 acres and 2,700 acres of private land. Fish Springs Ranch Ltd. has a cattle grazing permit for 5,062 AUMs with use taking place from 3/1 thru 10/31.

### Census Information

The Flanigan Herd Inventory is as follows:

*Fish Spr. Ranch  
7368 AUMS  
84 - 4977  
85 - 3433  
86 - 3285  
3815 offered preference*

| <u>Year</u> | <u>No. of Horses</u> | <u>Remarks</u>            |
|-------------|----------------------|---------------------------|
| 1962        | 140                  | Estimate                  |
| 1973        | 96                   | Aerial Inventory          |
| 1975        | 130                  | Aerial Inventory          |
| 1976        | 164                  | Aerial Inventory          |
| 1978        | 168                  | Aerial Inventory          |
| 1979        | 216                  | Estimate                  |
| 1983        | 275                  | Aerial (Incomplete)       |
| 1984        | 400-600              | Estimate of Total Numbers |

*1984 (now) 357  
want 100  
351 gathered*

*Sept. 85 297*

### Gather Information

*12% increase*

|      |  |
|------|--|
| 1976 | 59 Head Removed  |
| 1978 | 17 Head Introduced (Forced by Closure of Palomino Valley Corral due to Court Suit) |
| 1979 | 3 Head Introduced (Horses Tagged - Migration Study)                                |

### Grazing Permit

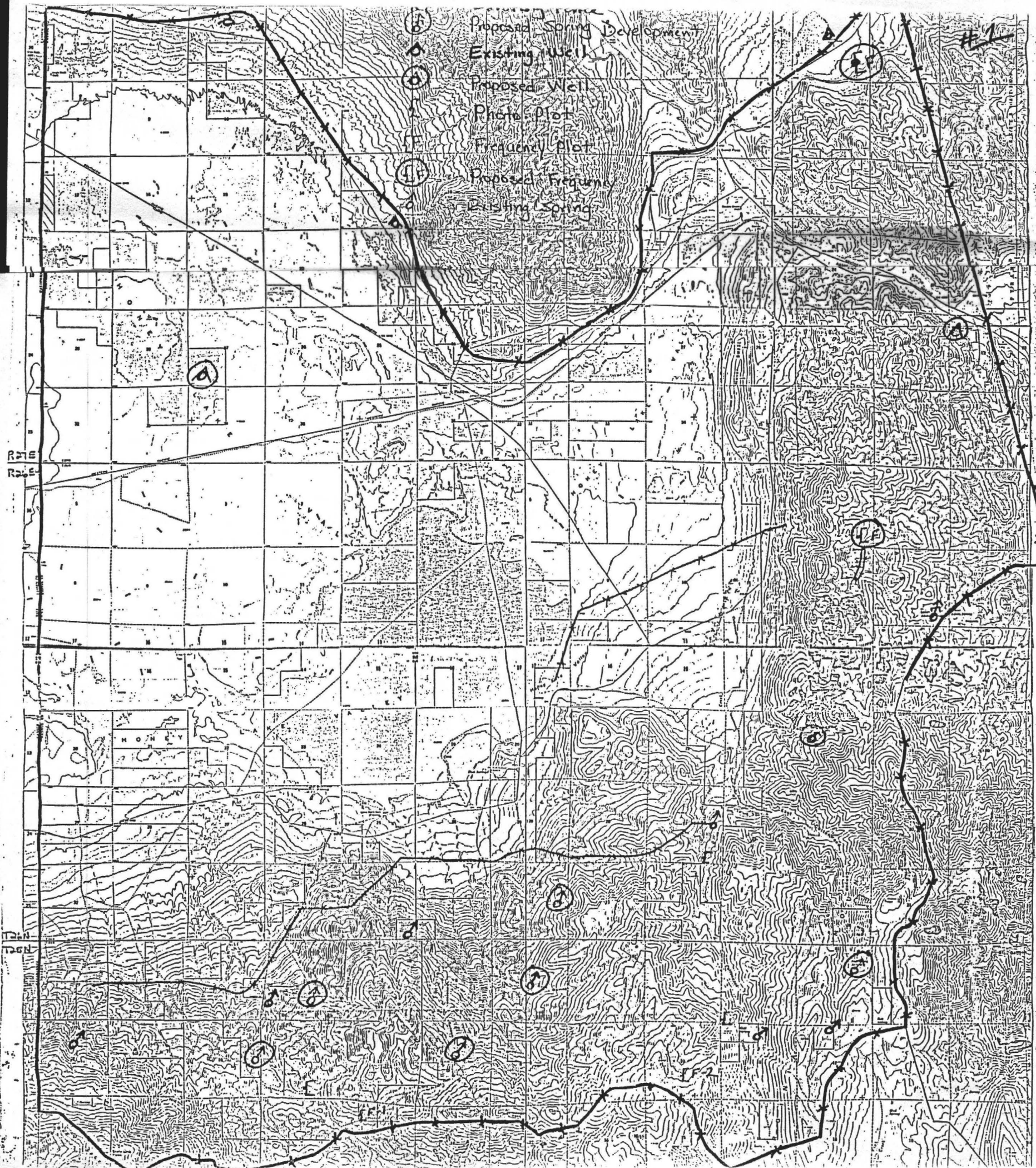
Increased grazing use by horses and their expanding range forced the former grazing permittee, Fish Springs Ranch, to remove cattle from the Flanigan Allotment and acquire grazing lands outside of the Carson City District.

### Management Plans

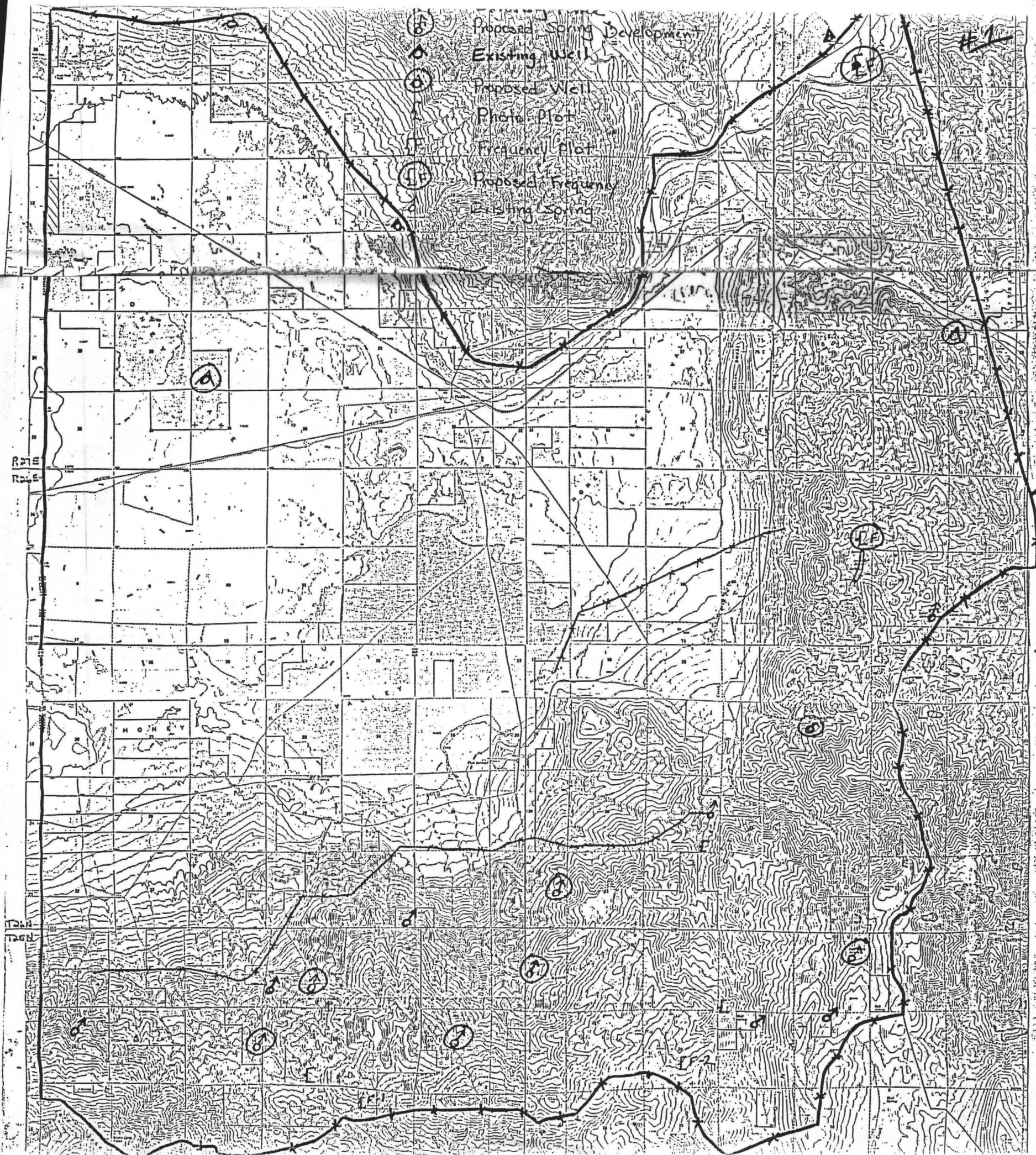
A Wild Horse Management Plan was completed in 1976, but a law suit by A.H.P.A. prohibited implementation of the plan. Continued lack of funding has prevented any subsequent removal of horses.

*+ Sage Inventory - (2) NUA boundaries*











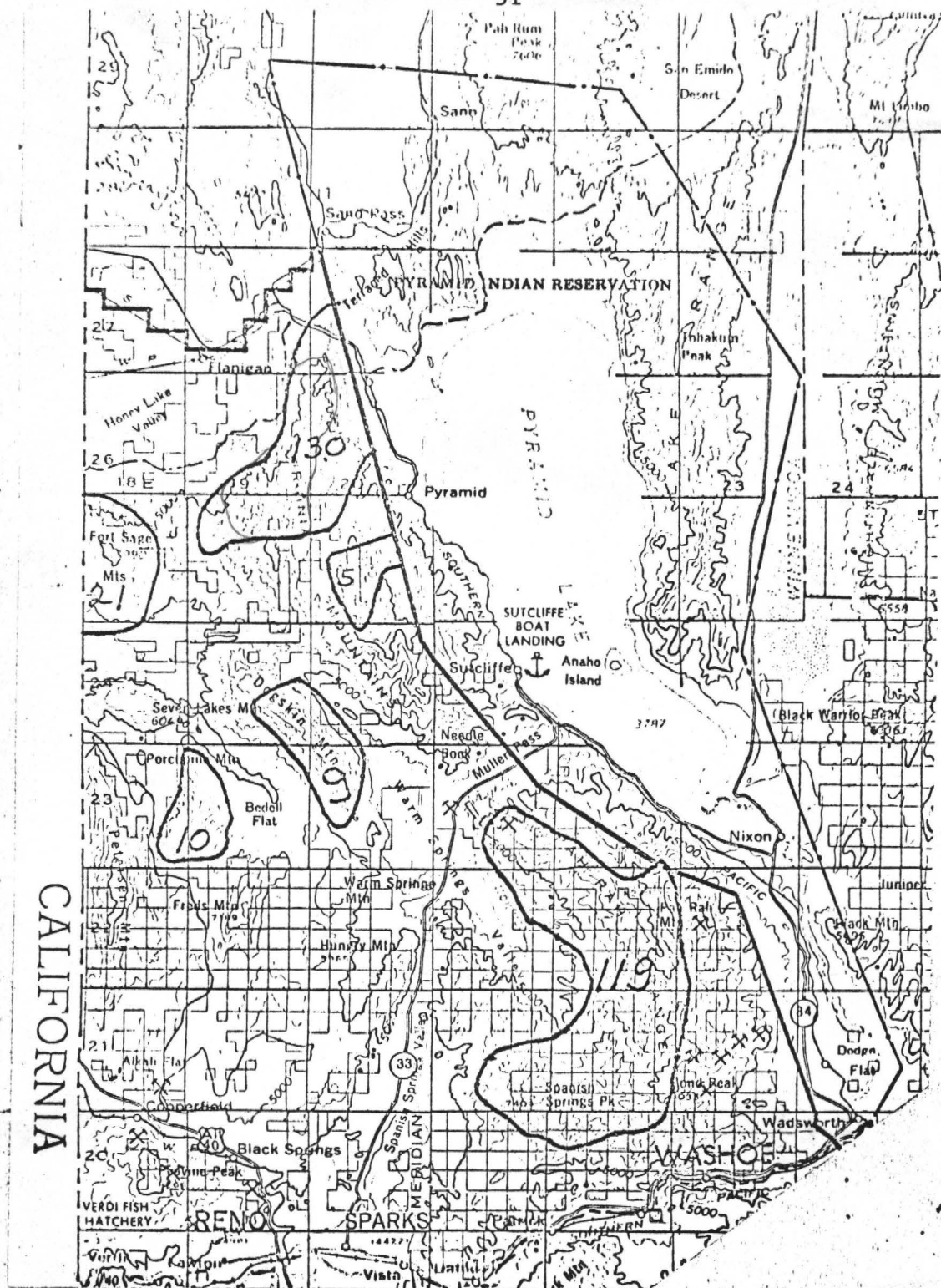


Figure 1. Wild Horse Areas in the Pyramid Area

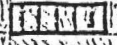
1. Fort Sage Mountain herd (21)
2. Flanigan herd (130)
3. Granite Peak herd (10)
4. Dogskin herd (9)
5. Mahogany Flat herd (5)
6. Pah Rah Mountains herd (119)



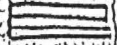
#7

Type Use

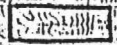
Horse



Cattle



Dual



Utilization Class

Severe



Heavy



Moderate



Light



Slight



Herd Use Area

Heavy

Heavy

Heavy

Heavy

Mod

Light

Light

Moderate

Heavy

Heavy

Light

Slight

MOD

MOD

