

12/23/85
IN REPLY REFER TO:



United States Department of the Interior

BUREAU OF LAND MANAGEMENT
NEVADA STATE OFFICE
300 Booth Street
P.O. Box 12000
Reno, Nevada 89520

4700
(NV-931.3)

DEC 23 1985

Wild Horse Organized Assistance
P. O. Box 555
Reno, NV 89504

Dear Sir/Madam:

The Bureau of Land Management proposes to gather excess wild horses from public lands in Nevada no sooner than 28 days from the date of this letter.

The proposed gatherings will be conducted in the Ely District in the areas shown on the enclosed maps and as described below:

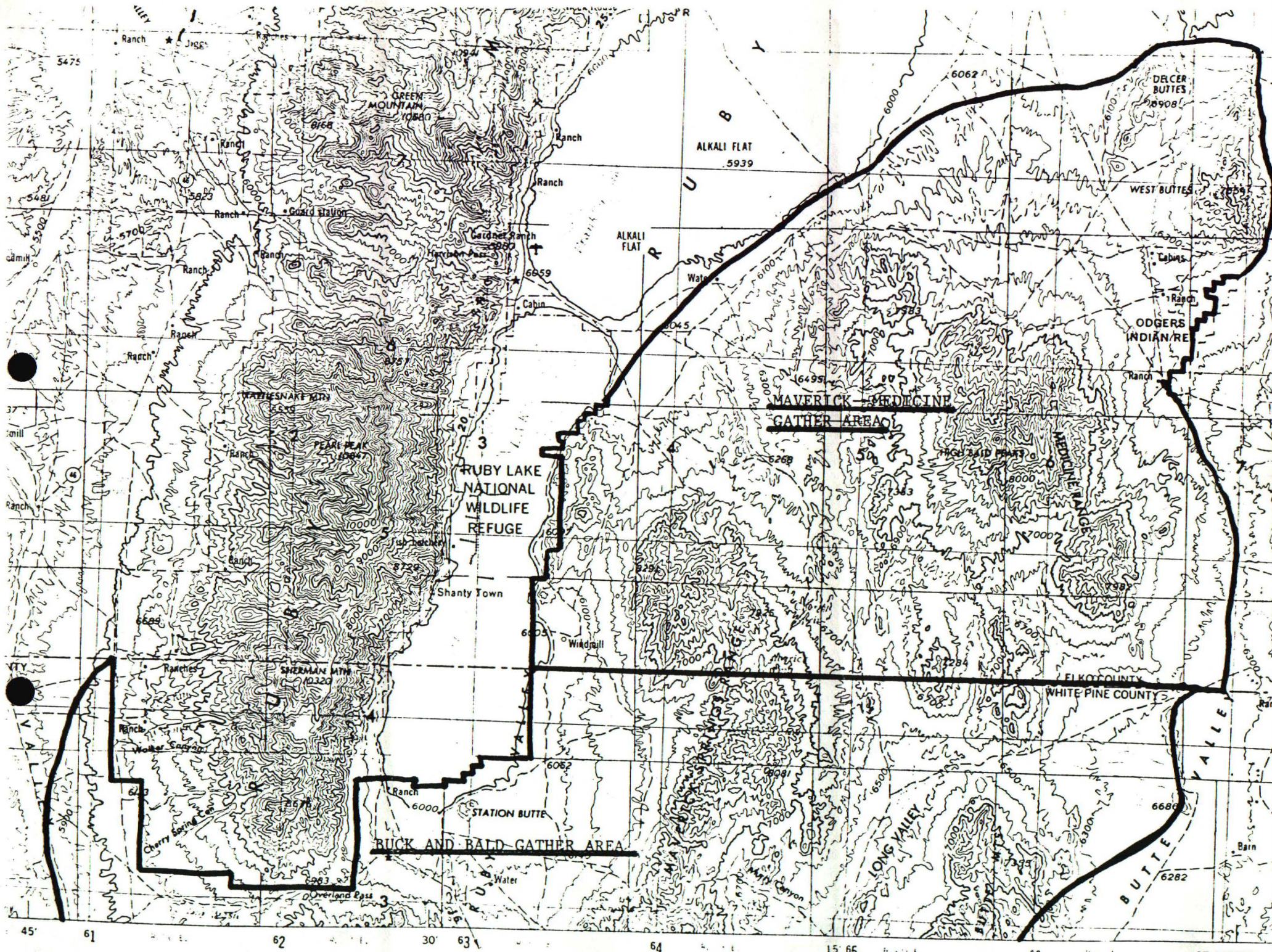
WH&B AREA NAME	EAR NUMBER	REASON FOR GATHERING	APPROX. NO. TO BE REMOVED	APPROX. NO. TO REMAIN
Maverick- Medicine	NV-040-6-5	Implement Land Use Planning	96	195
Buck and Bald	NV-040-6-5	Signed agreement between wild horse interest group and livestock operator for protection of resource values.	672	700

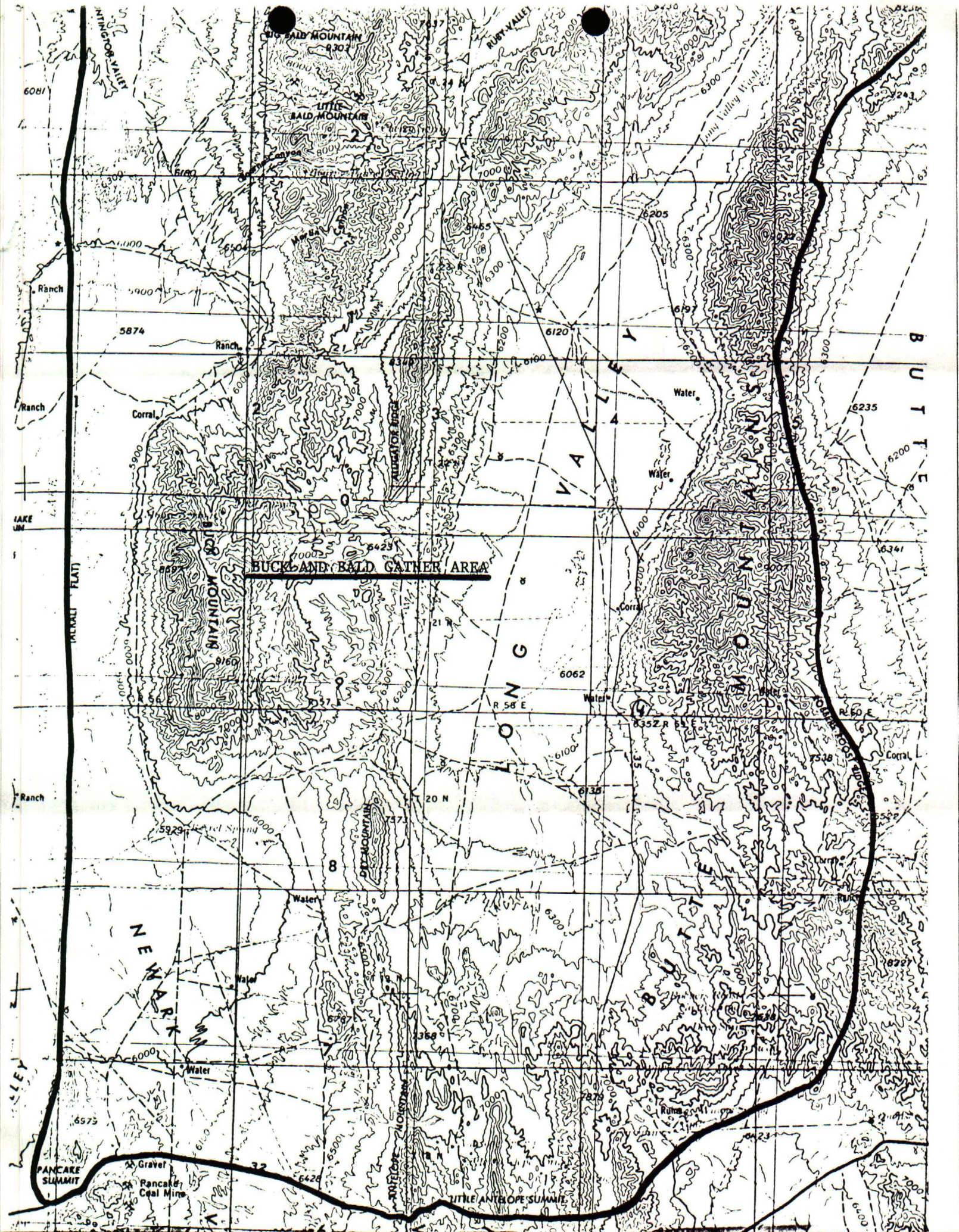
Sincerely,

Edward F. Spang
State Director, Nevada

2 Enclosures

- Encl. 1 - Map of Maverick-Medicine
- Encl. 2 - Map of Buck & Bald





BUCK AND BALD GATHER AREA

Big Bald Mountain
9307

Little Bald Mountain
8000

Buck Mountain
9160

Deer Mountain
757

Little Antelope Summit

LONG VALLEY

BUCK VALLEY

BUCK MOUNTAIN

BUCK MOUNTAIN

BUCK MOUNTAIN

BUTTE

BUTTE

BUTTE

BUTTE

MINNISCOPPE VALLEY

BUCK FLAT

NE MARK

PANCAKE SUMMIT
Gravel
Pancake Coal Mine

Ranch

Ranch

LAKE UN

Ranch

Water

Water

Water

Water

Water

5874

6120

6062

6062

6335

6335

6335

6335

6205

6197

6235

6235

6235

6235

6235

6235

6235

6200

6341

6341

6341

6341

6341

6341

6235

6200

6341

6341

6341

6341

6341

6341

6235

6200

6341

6341

6341

6341

6341

6341

6235

6200

6341

6341

6341

6341

6341

6341

6235

6200

6341

6341

6341

6341

6341

6341

6235

6200

6341

6341

6341

6341

6341

6341

6235

6200

6341

6341

6341

6341

6341

6341

6235

6200

6341

6341

6341

6341

6341

6341

6235

6200

6341

6341

6341

6341

6341

6341

6235

6200

6341

6341

6341

6341

6341

6341

6235

6200

6341

6341

6341

6341

6341

6341

6235

6200

6341

6341

6341

6341

6341

6341

6235

6200

6341

6341

6341

6341

6341

6341

6235

6200

6341

6341

6341

6341

6341

6341

6235

6200

6341

6341

6341

6341

6341

6341

6235

6200

6341

6341

6341

6341

6341

6341

6235

6200

6341

6341

6341

6341

6341

6341

6235

6200

6341

6341

6341

6341

6341

6341

6235

6200

6341

6341

6341

6341

6341

6341

6235

6200

6341

6341

6341

6341

6341

6341

6235

6200

6341

6341

6341

6341

6341

6341

6081

6300

6300

6300

6300

6300

6300

6300

6300

6300

6300

6300

6300

6300

6300

6300

6300

6300

6300

6300

6300

6600

6600

6600

6600

6600

6600

6600

6600

6600

6600

6600

6600

6600

6600

6600

6600

6600

6600

6600

6600

6600

6600

6600

6600

6600

6600

6600

6600

6600

6600

6600

6600

6600

6600

6600

6600

6600

6600

6600

6600

6600

6600

6600

6600

6600

6600

6600

6600

6600

6600

6600

6600

6600

6600

6600

6600

6600

6600

6600

6600

6600

6600

6600

6600

6600

6600

6600

6600

6600

6600

6600

6600

6600

6600

6600

6600

6600

6600

6600

6600

6600

6600

6600

6600

6600

6600

6600

6600

6600

6600

6600

6600

6600

6600

6600

6600