

Delamar

m 3-9-92



United States Department of the Interior



BUREAU OF LAND MANAGEMENT
LAS VEGAS DISTRICT OFFICE
4765 VEGAS DRIVE
P.O. BOX 26569
LAS VEGAS, NEVADA 89126

IN REPLY REFER TO:

(NV-053)
8500
6700

MAR 09 1992

Dear Concerned Citizen:

On October 1, 1991 the Las Vegas District Office sent the MAD Habitat Management Plan and Environmental Assessment out for your comment and review. Based upon input from the Nevada Department of Wildlife I am considering incorporating additional acreage into the Habitat Management Area (see attached map). The following planned actions will apply to this additional acreage.

- D1-2 NDOW will conduct appropriate population monitoring studies to determine population size, structure and distribution.
- D2-2 BLM will conduct appropriate habitat monitoring studies to insure that use levels are consistent with maintaining existing habitat conditions. The extent and frequency of habitat monitoring studies will be based upon bighorn sheep concentration areas and use patterns as determined by NDOW population monitoring studies.
- D2-3 BLM will not allow competitive OHV events in bighorn sheep habitat. Other appropriate commercial permitted activities will be allowed on a case-by-case basis, if consistent with the goals and objectives of the HMP and the Rangeland Plan for Managing Bighorn Sheep Habitat on Public Lands.
- D2-4 Through the environmental process, BLM will include appropriate stipulations to ensure that oil and gas, and mineral leases are compatible with the objectives of this plan. Prevent undue and unnecessary degradation of bighorn sheep habitat due to mineral related exploration and development by implementation of the following stipulations.
 - a. Where feasible, allow no new road construction or siting of ancillary facilities in lambing habitat. If roads or ancillary facilities cannot be avoided in lambing habitat, mitigate such facilities to the extent possible.

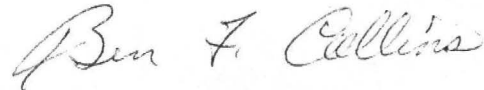
- b. If mineral activities result in denying access of bighorn sheep to water, or discourage the use of water sources, the lessee will be required to mitigate impacts to bighorn sheep.
- D2-5 BLM will ensure that mineral material sales are issued with appropriate stipulations to mitigate impacts to bighorn and their crucial habitat. If appropriate mitigation can not be developed, the BLM authorized officer should not approve the sale.
- D2-6 Through mining plans of operations and the environmental process, BLM will work with mining companies to reduce impacts to bighorn sheep and their habitat.
- D2-7 BLM will not increase livestock distribution from current use areas within bighorn sheep habitat.
- D2-8 BLM will retain bighorn sheep habitat in public ownership within the constraints of the Land Use Plan.
- D2-9 Fences should be constructed only when necessary and then to Bureau's standards as specified in the BLM fencing handbook.
- D2-10 BLM will maintain or improve forage condition by ensuring that utilization of key forage species does not exceed an average of 50 percent use of the current year's growth on key forage species throughout the HMA.
- D2-11 NDOW will take the appropriate actions necessary to limit population size to ensure that habitat use is consistent with habitat objectives and appropriate utilization levels.
- D2-12 BLM will not allow the conversion of the following allotments from cattle use to domestic sheep use.
1) Delamar....

The two existing, non-functional livestock waters located within the area will be considered existing waters and will not be affected by the proposed boundary change. This area will be considered an existing use area by livestock. Therefore, livestock use will not be affected by the proposed boundary change. The proposed change will not result in any additional overlap with the Delamar Horse Herd Management Area.

No wildlife waters are proposed for this portion of the Habitat Management Area. There would be no additional impacts to wilderness or visual resources by the proposed change.

If you have any additional concerns, please respond to the Las Vegas District Office at the above address by March 20, 1992. Any questions may be directed to Jeanie Cole at (702)647-5000.

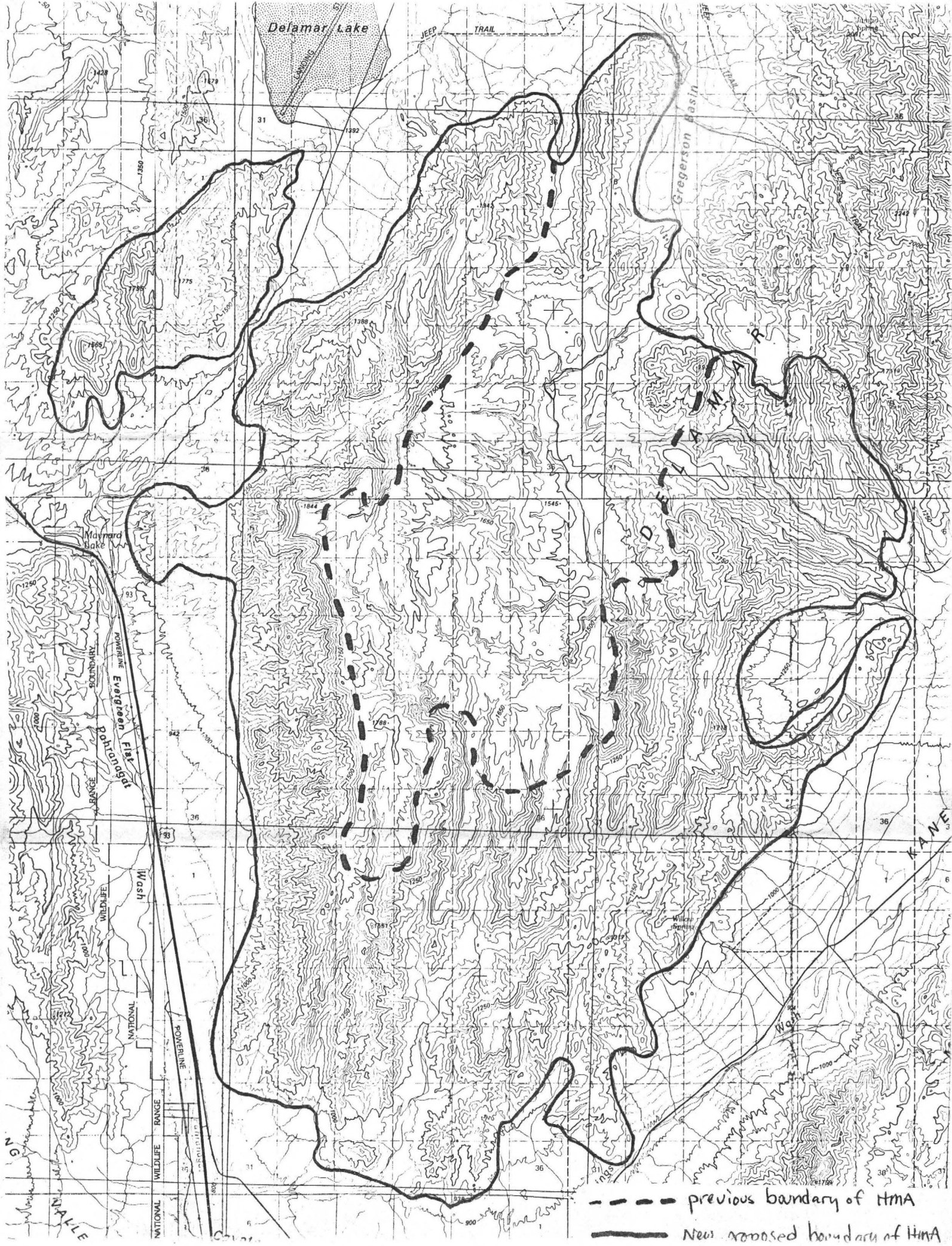
Sincerely,



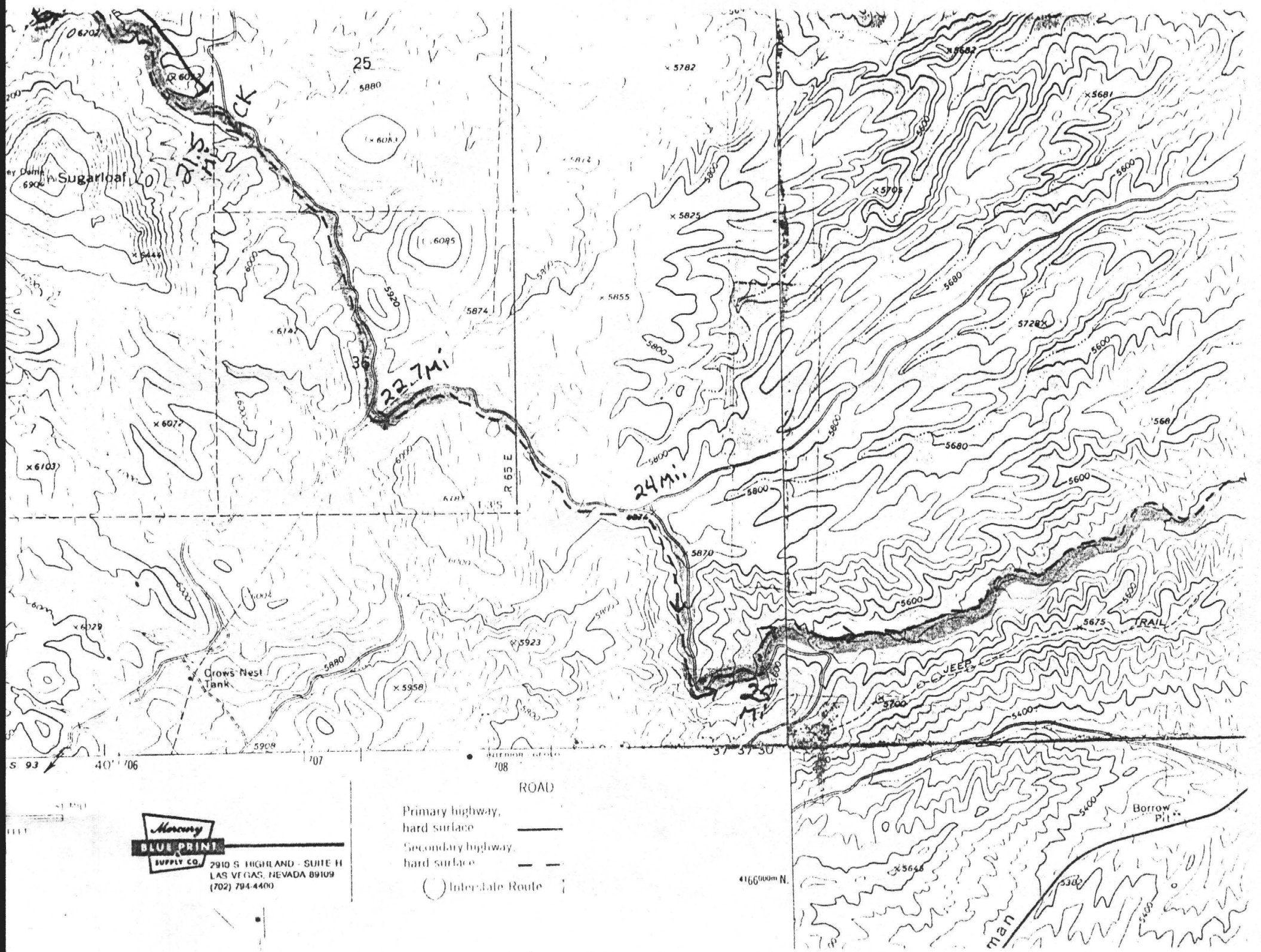
Ben Collins
District Manager

1 Enclosure

1. Map of proposed boundary change.



--- previous boundary of HMA
— New proposed boundary of HMA



Mercury
BLUE PRINT
 SUPPLY CO. 2910 S HIGHLAND - SUITE H
 LAS VEGAS, NEVADA 89109
 (702) 794-4400

ROAD
 Primary highway,
 hard surface ———
 Secondary highway,
 hard surface - - -
 () Inter-Lake Route

