

10/7/96

95% CF

UNITED STATES DEPARTMENT OF THE INTERIOR
BUREAU OF LAND MANAGEMENT
Ely District Office
HC 33 Box 33500
Ely, Nevada 89301

In Reply Refer To:
4700 (NV-043)

OCT -7 1996

Memorandum

To: ADM Renewable Resources
From: Ely District Wild Horse Specialist
Subject: Aerial Census of Diamond Hills South HMA (NV412) and
Diamond Horse Free Area

I conducted an aerial census of the Diamond Hills South HMA and the adjacent Diamond horse free area on Friday, October 4, 1996, to get an accurate count of horses in the area. A Bell 47G3B4A Soloy conversion helicopter from High Desert Helicopters, Fallon, Nevada, was used to conduct the census. Ron Crowe was the pilot. This census was coordinated with Battle Mountain and Elko Districts to get a complete census of the entire Diamond Mountains area in cooperation with Eureka County. The Battle Mountain and Elko District HMAs were censused the two days prior to the Ely District census. John Etchegaray and Doug Furtado represented Eureka County for the census; one of them was on board the helicopter as an observer during the entire census.

The weather was warm, sunny and clear during the census. Winds were light. Visibility was good for counting horses. Transects were generally run in a north-south direction with some east-west variation due to topography. Total census flight time was 1.7 hours for the Diamond Hills South HMA and another 2.5 hours for the Diamond horse free area.

A total of 233 wild horses were censused on the Diamond Hills South HMA and 142 additional horses were counted to the south in the horse free area. The final census tally is as follows:

Diamond Hills South HMA	180 adults	53 foals	Total: 233
Diamond Horse Free Area	<u>122 adults</u>	<u>20 foals</u>	<u>Total: 142</u>
Ely District Census Total	302 adults	73 foals	Total: 375

The attached maps show the individual bands counted by specific location with adults/foals counted in each band. The attached map is at a scale of 1:100,000. The original field census map, at a scale of 1:100,000, will be located in the Diamond Hills South HMA file.

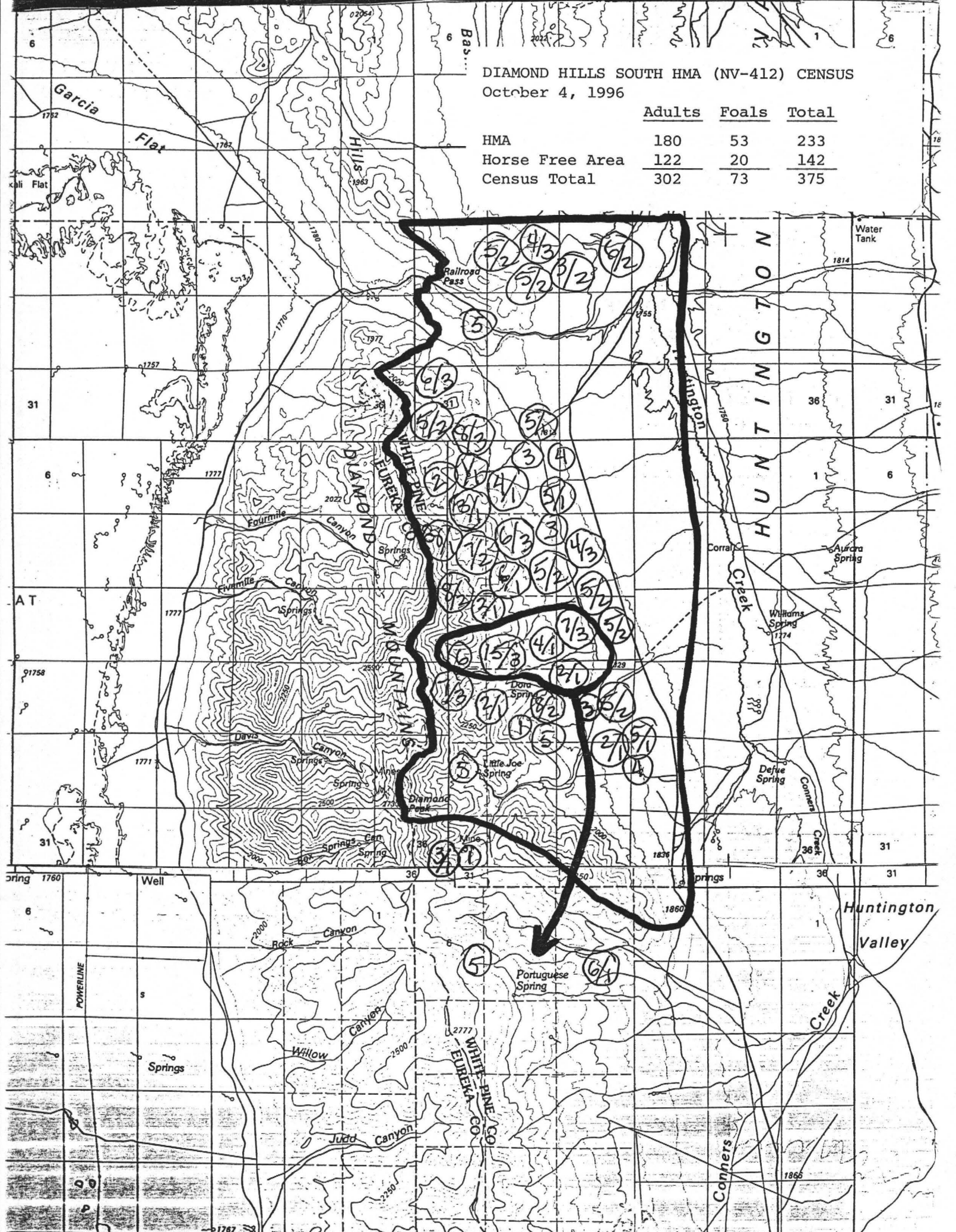
Bob Brown

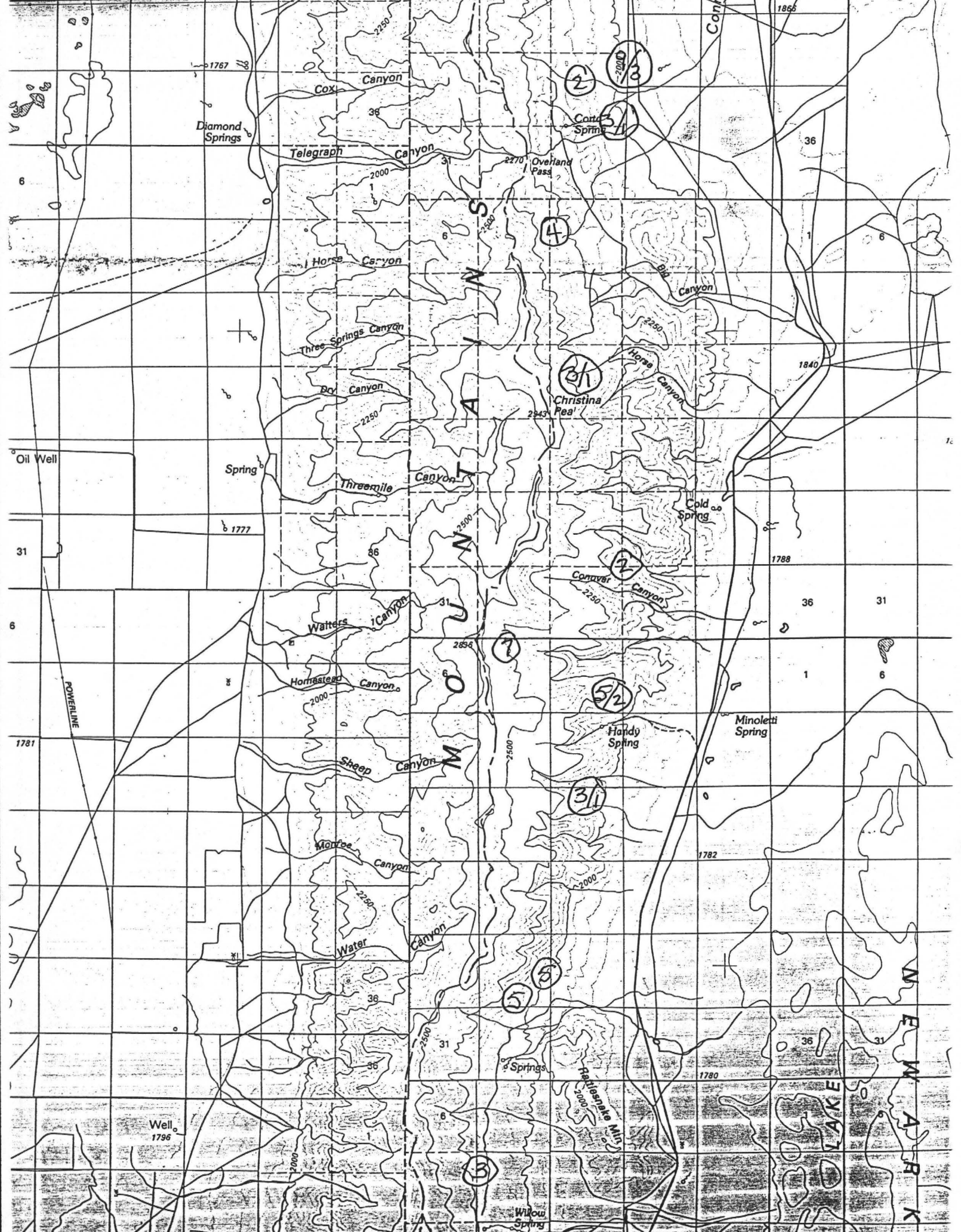
1 Attachment

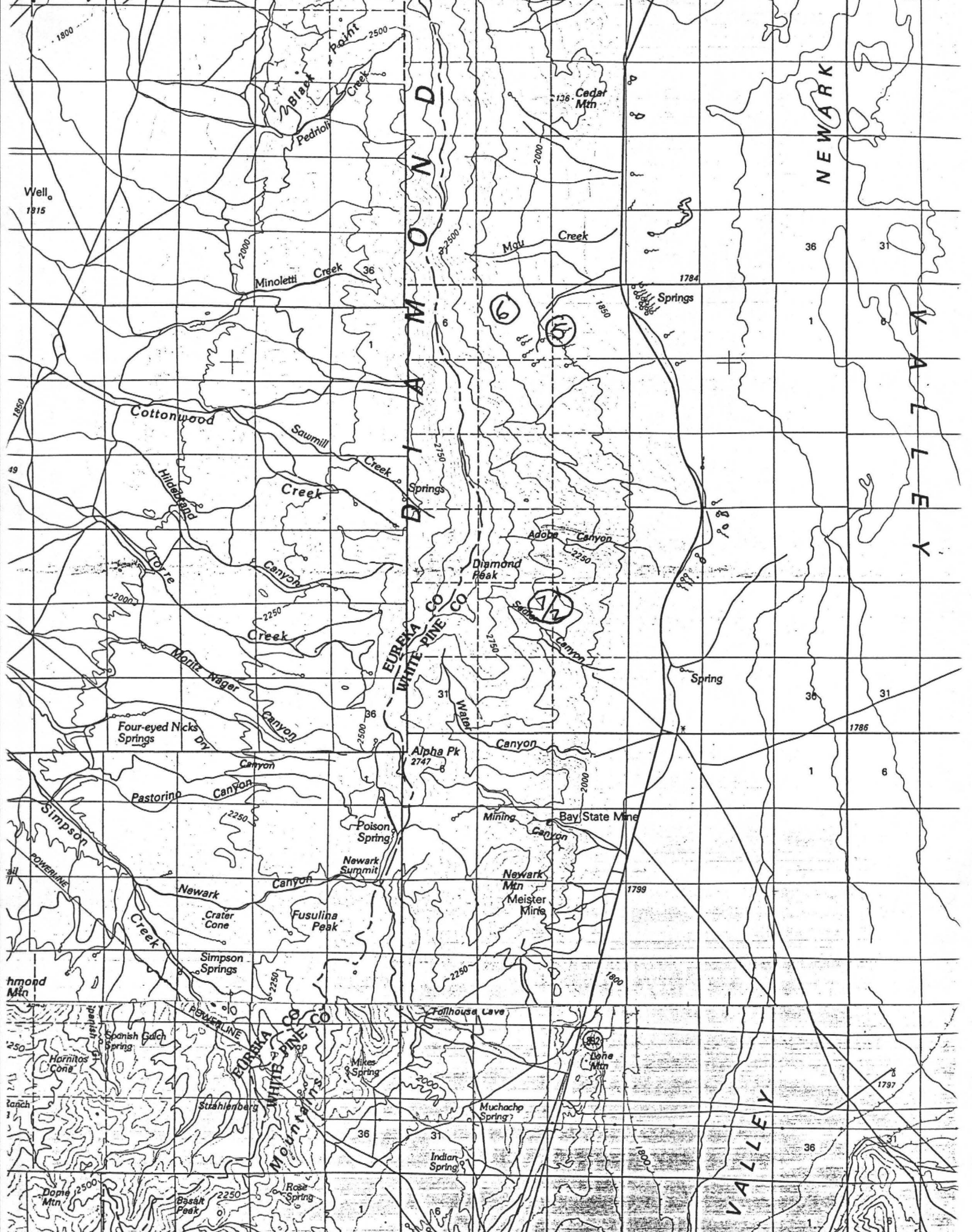
1. Census Map (4pp)

DIAMOND HILLS SOUTH HMA (NV-412) CENSUS
 October 4, 1996

	Adults	Foals	Total
HMA	180	53	233
Horse Free Area	122	20	142
Census Total	302	73	375







DIAMOND MOUNTAINS

NEWARK VALLEY

EUREKA CO
WHITE PINE CO

NEWARK VALLEY

Well
1315

49

Diamond Mtn

Ranch

Dodge Mtn

Black Point
Creek

Pedroly
Creek

Minoletti
Creek

Cottonwood
Creek

Sawmill
Creek

Hillside
Creek

Monte Nager
Creek

Four-eyed Nicks
Springs

Pastorino
Canyon

Newark
Canyon

Simpson
Springs

Spanish Gulch
Spring

Stashenberg

Basalt
Peak

Newark
Summit

Fusulina
Peak

Mikes
Spring

Rose
Spring

Alpha Pk
2747

Poison
Spring

Newark
Mtn

Crater
Cone

Spanish
Spring

Muchach
Spring

Indian
Spring

Diamond
Peak

Adobe
Canyon

Water
Canyon

Mining
Canyon

Bay State
Mine

Newark
Mtn

Meister
Mints

Follhouse
Lave

Dodge
Mtn

Done
Mtn

Cedar
Mtn

Mou
Creek

Spring

Spring

Spring

Spring

Spring

Spring

Spring

Spring

Spring

Spring

Spring

Spring

Spring

Spring

1784

1800

1785

1799

1800

1800

36

31

1

6

36

31

1

6

36

31

1

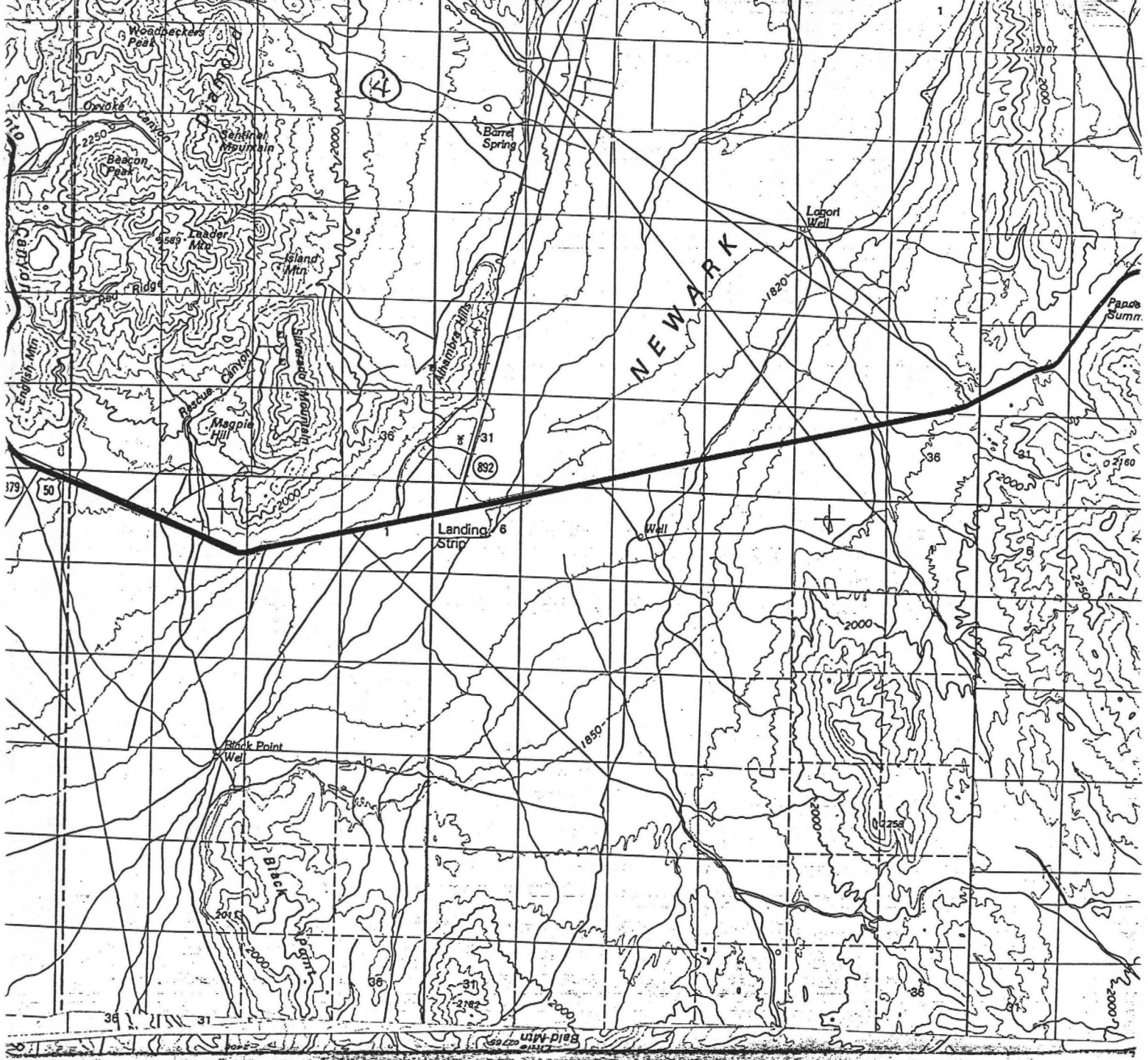
6

1797

(6)

(5)

(12)



BT

100%

10 hrs

1996 Aerial Survey Results
Diamond Mountains

<u>Allotment</u>	<u>District</u>	<u>Adult Horses</u>	<u>Colts</u>	<u>Total</u>
Black Point	BM	134	26	160
Browne	Elko	93	30	123
Diamond Springs	BM	251	74	325
Redrock Native	Elko	73	19	92
Redrock Seeding	Elko	0	0	0
Redrock SDG	Elko	6	1	7
Robinson Creek	Elko	28	9	37
Shannon Station/ Spanish Gulch	BM	7	1	8
Strawberry	Ely	5	0	5
Railroad Pass	Ely	167	52	219
Three Mile	BM	108	21	129
Remaining Ely Allotments	Ely	<u>135</u>	<u>22</u>	<u>157</u>
Total		1007	255	1262