

8/6/75

IN REPLY REFER TO

4700
(N-043)



United States Department of the Interior

BUREAU OF LAND MANAGEMENT
Ely District Office
Pioche Star Route, Ely, Nevada
89301

August 6, 1975

W.H.O.A. Inc.
P.O. Box 555
Reno, Nevada 89504

Attention: Mrs. Dawn Y. Lappin

Dear Mrs. Lappin:

Thank you for your letter of June 20, 1975, concerning your comments and recommendations for wild horses in regards to the Baseline Oil & Gas and Geothermal area of the Ely District. Your recommendations have been considered in the preparation of the Environmental Analysis Record.

In answer to your question concerning wild horses in the Ely District, there are 2132. This figure was obtained from aerial inventories conducted from March 7 through April 4, 1975. The 300+ number we gave you in our letter of June 12, 1975, was the actual number in the Baseline area which could be affected by oil & gas and geothermal leasing.

Wild horse management in the Ely District is presently in the planning stage. For planning purposes, the Ely District is divided into six geographic areas (see attached map). These areas in order of plan completion, and the number of wild horses inventoried are as follows:

<u>Planning Unit</u>	<u>Wild Horses</u>
1. Duckwater	458
2. Lake Valley-Wilson Creek	287
3. Cherry Creek	804
4. Moriah	402
5. White River	173
6. Preston-Lund	8

Once all of the resources, including wild horses, have been inventoried and plans formulated concerning their use, land use decisions are then made to manage the resources on a multiple use basis.

Shirley M. Donaldson
acting



Save Energy and You Serve America!

4700
(N-043)

-2-

August 6, 1975

The Duckwater and Lake Valley-Wilson Creek Units have been completed through the land use decision stage. The Cherry Creek and Moriah Units are scheduled for completion of planning during this year, while the remaining two units will be completed in the future.

We have enclosed a copy of the land use decisions for the Duckwater Unit. As stated in the wild horse decisions (pages 14-16), we are presently conducting data on wild horses. Means of collecting data are: immobilizing horses with tranquilizers and installing collars, fecal analysis, and aerial inventory.

The immobilization program consists of tranquilizing the horses with a drug. While the horses are under the effect of the drug we record their sex, age, color, and condition, plus other horses in the band. We also install a color coded collar around their neck and ear tag them. Once the tranquilizer wears off and the horse rejoins the herd, we can readily spot them during seasonal aerial inventories. This allows us to determine their seasonal movements which are recorded on a map and determine the movement of the horses among bands within the herd area. As of this date, a total of eight horses have been collared, four mares and four studs.

Fecal samples are collected from wild horses, livestock and wildlife. They are sent to Colorado State University where the vegetative content is analyzed. The results allow us to determine the vegetation used by the animals and where competition exists between them for forage.

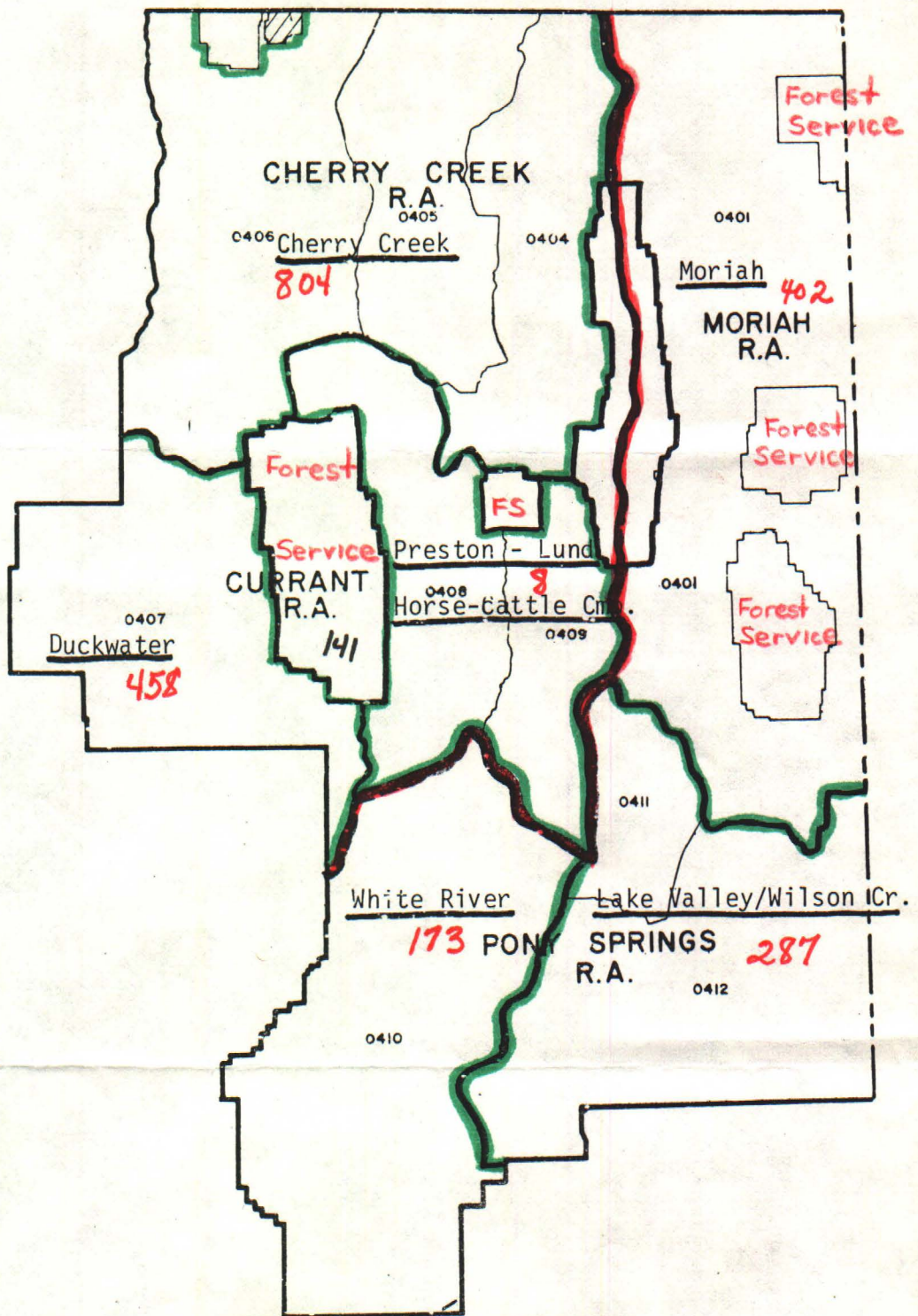
Aerial inventories are conducted seasonally to track the collared horses, and annually to determine herd increases.

We hope the above summary of the Ely District's wild horse program will be of help to you. As we complete the inventory phases of the Cherry Creek and Moriah planning units during this fiscal year, we would like to contact you and obtain your assistance in providing recommendations to improve opportunities for wild horses in these units.




Sincerely,

G. Duncan MacDonald
Acting District Manager

Enclosure



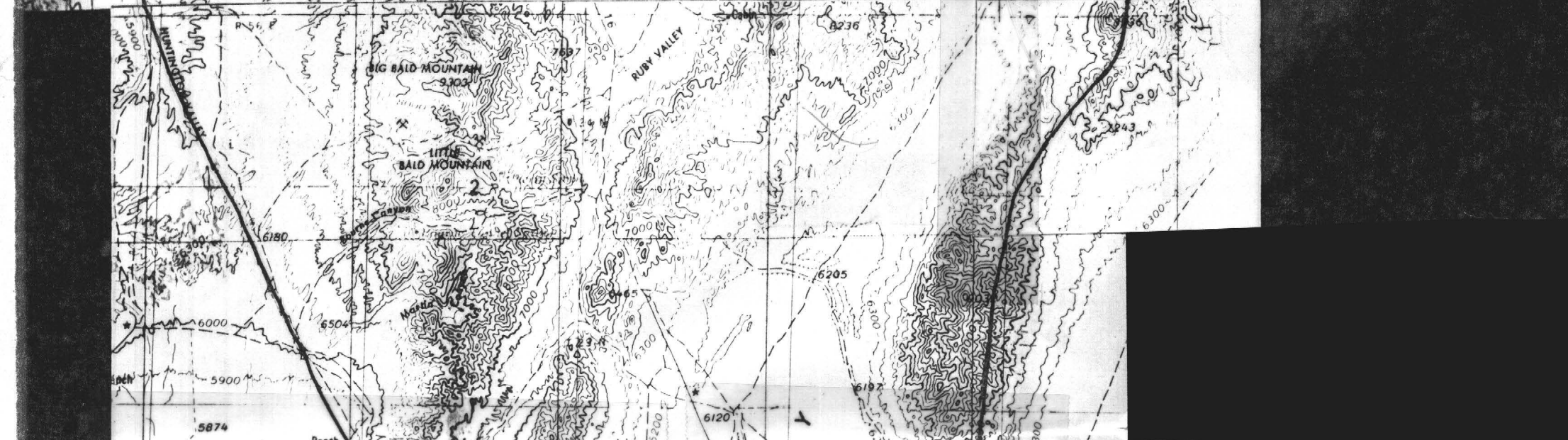
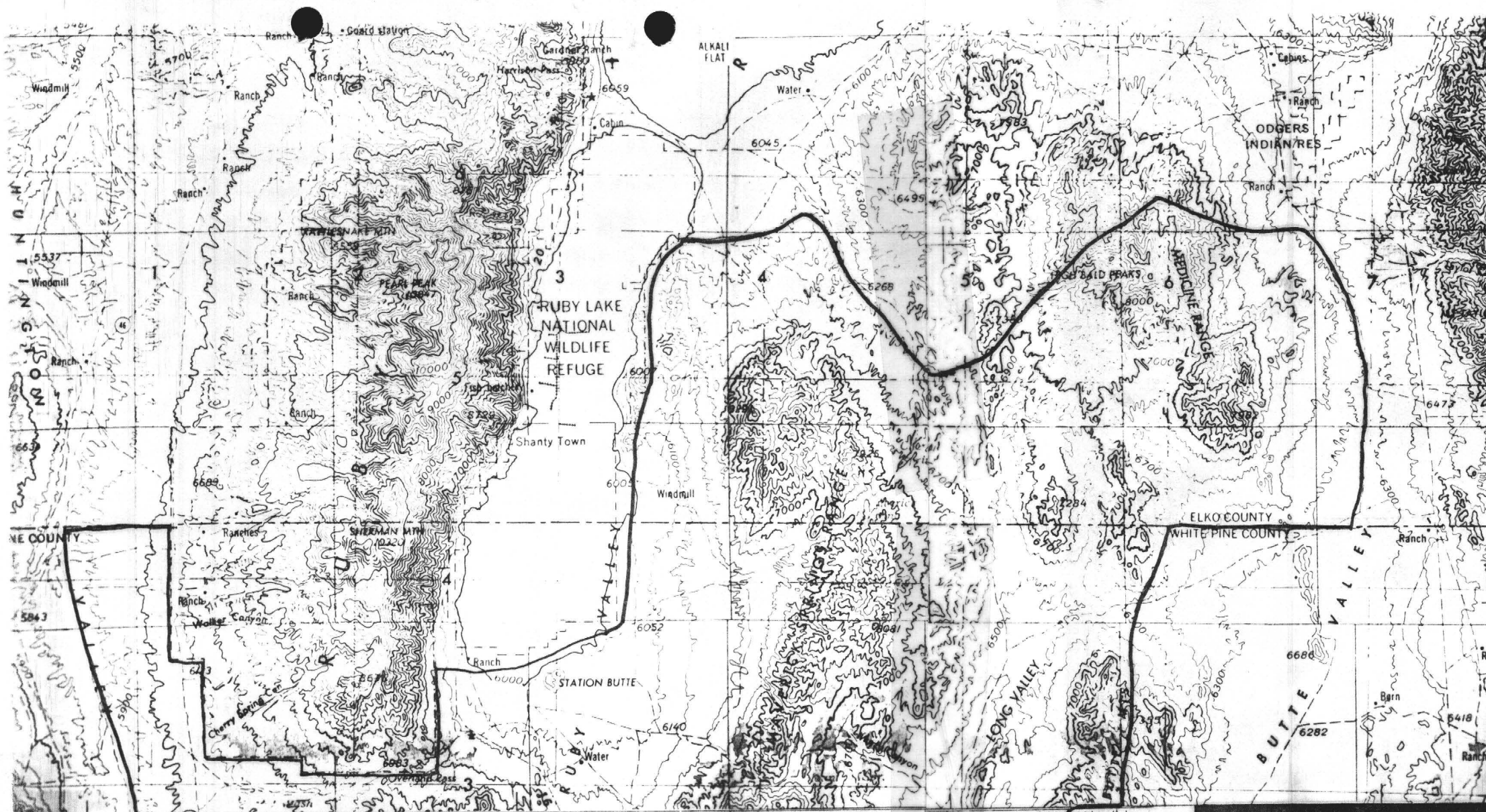
LEGEND

-  DISTRICT BOUNDARY
-  RESOURCE AREA BOUNDARY
-  PLANNING UNIT BOUNDARY

ELY DISTRICT
PLANNING UNITS

TOTAL HORSES 2132







VEGETATIVE TYPES

012 Bunch Grasses
041 Big Sages
043 Mid Sages
044 Gray Rabbitbrush
091 Pinyon-Juniper
131 Shadscale
141 Greasewood
151 Winterfat

WILDLIFE USE

D-Y	Deer Yearlong
D-W	Deer Winter
D-C	Deer Crucial Area
SG	Sage Grouse Sitings
SG-S	Known Sage Grouse Strutting Grounds
BG	Blue Grouse
C	Chukar
BP-N	Possible Birds of Prey Nesting Area (Uninventoried)
MB	Migratory Birds and Shorebirds