

het

concentrates  $\frac{1}{2}$  herd in  
Southern area  
E-W separation

1. is there water even  
further in

Ken Walker

HMA water + fences  
distribution of horses.

fence caused problem  
first place -

PUBLIC ANIMALS  
ON  
Res-COAR PUBLIC FENCE

Bob Brown

Drought

Jakes Wash

AML-20

March-36

June-7

Hours on N end at  
Pond

18 dead

cut fence -

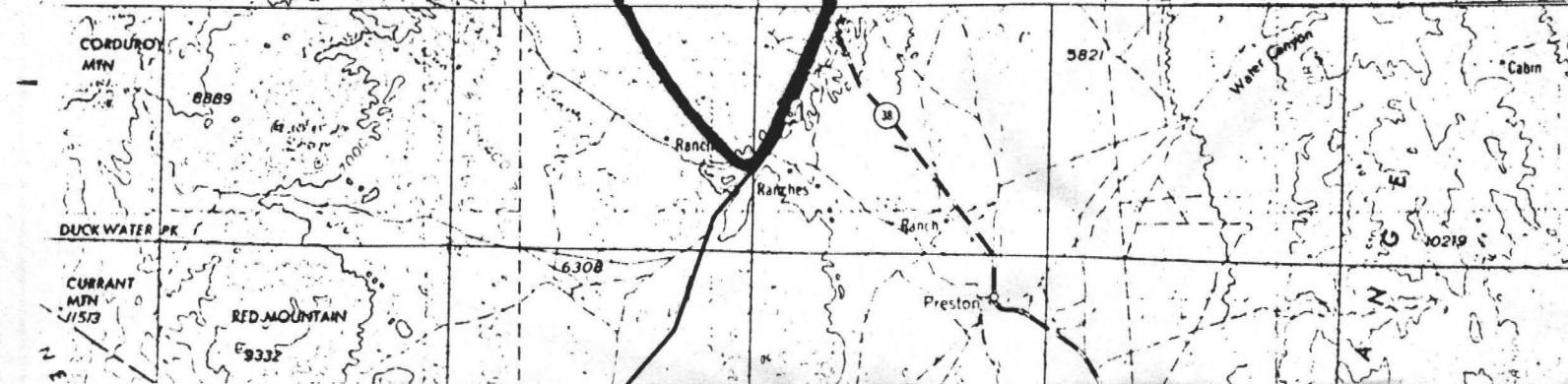
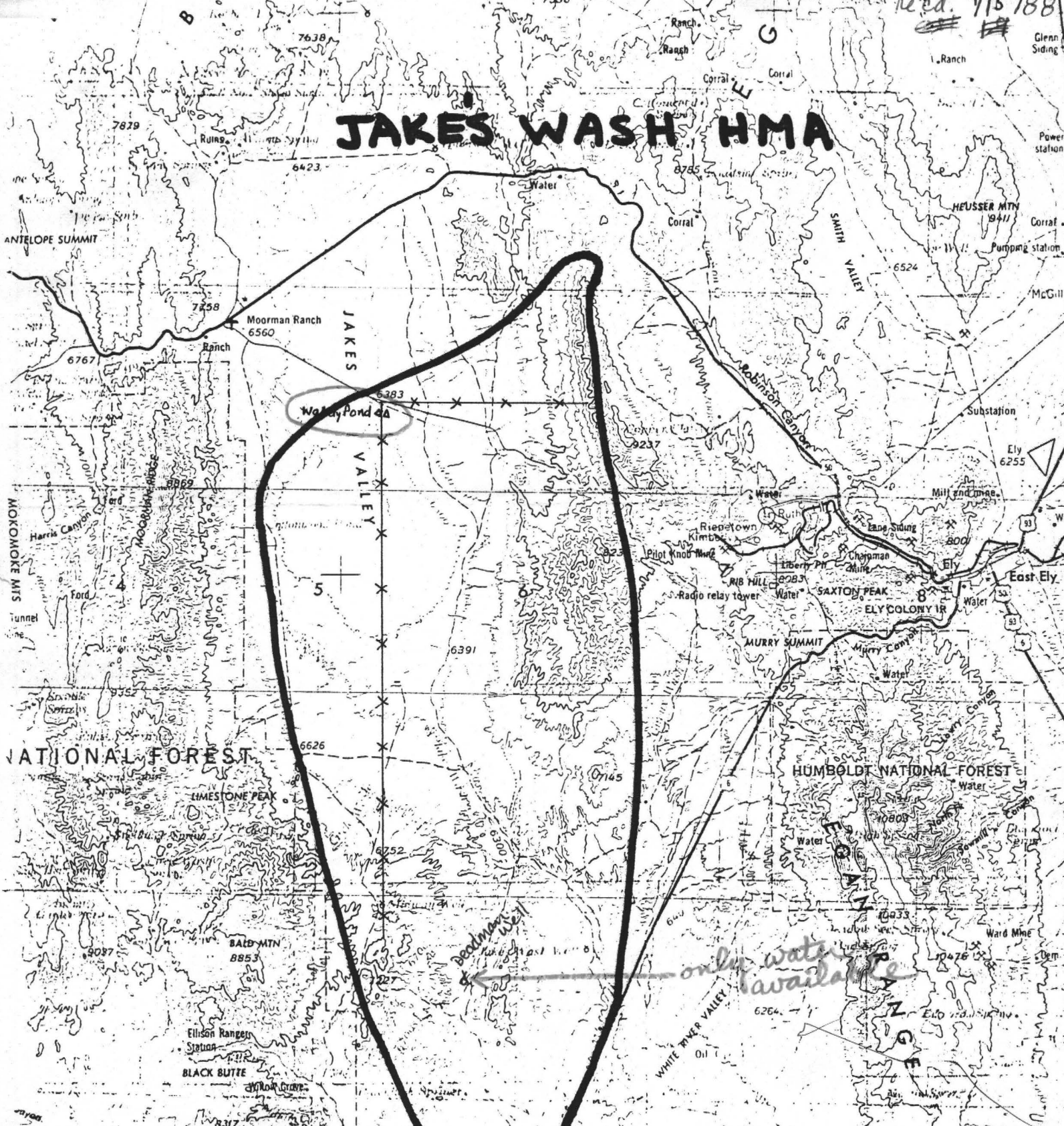
Emergency on N end

27 head.

South -

red. 7/15/88

# JAKES WASH HMA



July 1 - No dead horses at Waldy Pond. Fence broke in 5 locations

Lindsay saw no dead horses 7/1  
4 troughs - wrong place

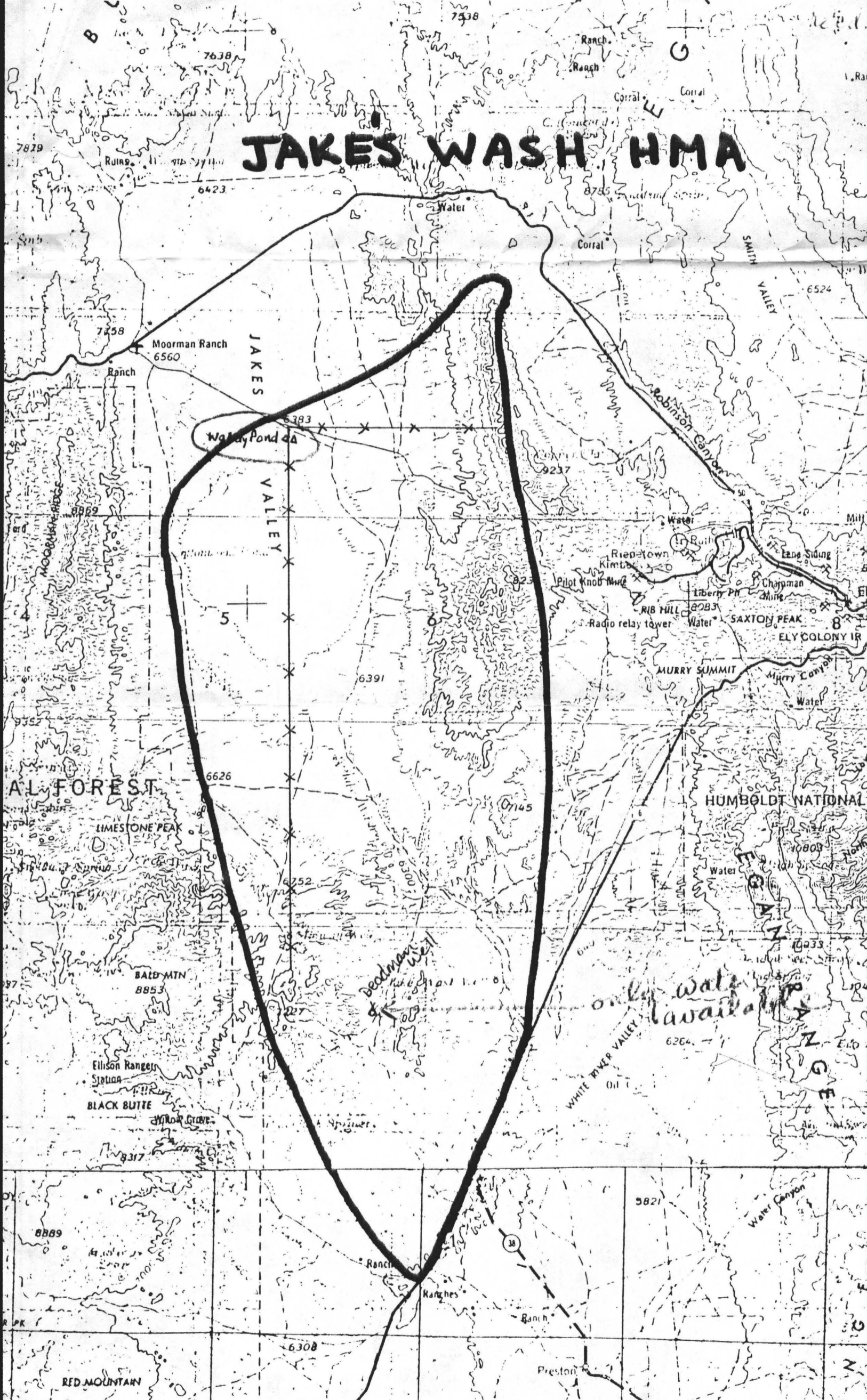
July 2 - moved 4 troughs

July 3 - water had been drunk

July 5 Range tour  
27 head between WP & Railroad Reservoirs

July 10 - 9 WH west & 16 on east

# JAKES WASH HMA



Dawn,  
Here is the map you  
requested.

Sincerely,  
Bob Brown



We are happy  
to comply  
with your request...



**U.S. DEPARTMENT OF THE INTERIOR**  
**Bureau of Land Management**

Sr. 5 Box 11  
Ely, Nevada 89301

NV 1120-27 (March 1984)

BOB Brown

7/21/88

1. How many horses died & where in relationship to Waddis Pond?
2. Where were the live horses located?
3. How many horses were captured and where from & how?

~~4. On your surveillance how many horses~~

4. How many horses were authorized under the "Emergency" order to be captured?

5. When was the fence put in and how does it comply with the land use plan objectives.

6. Whose respons. is it to maintain the ponds?

7. How many horses remain & where?

8. Where was fence cut & when was it repaired?

PRB 362

Oryx, CA

93255

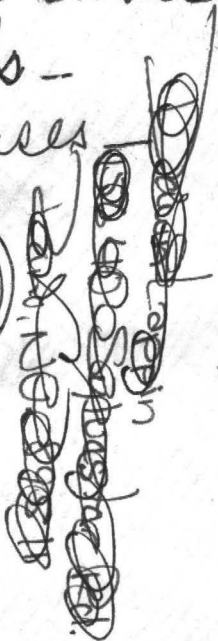
1. unequal. crit.  
roundup

2. unnecessary  
picked up.

3. Fence/water

4. under table  
deals -

(head horses  
no. BEM  
follow)



~~Cherry Cars~~  
~~93255~~

362

Rancher reported

reconstruction

of  
Jakes Wash





10: 12<sup>00</sup>

786-9852

# 1139

workshop

(South)

~~DM~~  
(DM)  
Slip

CCC.  
const.

← Reservoir Land use plan  
slip for public lands

#

as a minimum  
assured water

#

fuel compounds -