

NO  
DATE

# WILSON CREEK ALLOTMENT

## A Description

The Wilson Creek Allotment is located in Lincoln County, Nevada and is the largest grazing allotment on the Ely District at approximately 1.1 million acres of public land and 18,000 private. The allotment encompass five major mountain ranges and valleys. Elevations range from 9,296 feet at Mt. Wilson to 4,600 feet in Dry Lake Valley. The allotment provides a large variety of vegetation types including but not limited to Salt Desert Shrub, Winterfat, Mountain Shrub/Mahogany, Grass Dominated (meadow, wetland, loamy bottom, seedings, ect.), Sage Brush (big and black), ephedra, Ponderosa Pine/Manzanita, and Pinyon-Juniper which encompasses 35% of the allotment. There are approximately 26,000 acres of seeded pasture on the allotment from vegetation conversions and fire rehabilitation.

## B Grazing

The allotment is divided into 13 Use areas and 10 livestock operators are authorized to graze livestock on the allotment. The total amount of permitted use for the allotment includes 32,073 cattle Animal Unit Months (AUMs) and 14,337 Sheep AUMs.

The Biodiversity of wildlife species on the allotment includes elk, deer, antelope, upland birds, birds of prey (including Bald and Golden Eagles, Ferruginous Hawks, and Peregrine Falcons), and numerous non game species.

There are portions of three herd management areas (HMA) on the allotment:

- 1) Wilson Creek HMA: 586,306 acres - AML of 102 horses
- 2) Dry Lake HMA: 466,306 acres - AML of 78 horses
- 3) Seaman HMA: 12,112 acres - AML of 12 horses

102	78	12
12	12	12
204	156	144
102	78	
1224	936	
936		
144		
1304		

## C Wilderness Study Areas (WSA)

There are three WSA on the allotment:

- 1) Table Mountain WSA 35,958 acres
- 2) White Rock WSA 23,625 acres
- 3) Parsnip Peak WSA 88,175 acres

## D Agenda for Tour on Wednesday September 11, 1996

- 1. 8:00 Meet at the Mt. Wilson Road off US 93
- 2. 8:30 Wilson Creek HMA (Map 1)  
South Lake Valley Use Area: Condition of HMA  
Patterson Seedings (horse free area): Wild Horse Use in the Seedings.

3. 10:30 Dry Lake Valley HMA (Map 2)

Dry Lake Valley Use Area: This use area is closed to livestock grazing this fall and winter due to severe drought conditions. A maintenance gather was scheduled for next fiscal year, however due to drought conditions horses will be gathered down to the Appropriate Management Levels (AML) during the later part of Sept. The AML for horses was established through the Allotment Evaluation/Multiple Use Decision Process.

Point of Interest: The Bristol Mining District was organized April 10, 1871, but the ore deposits (silver/lead) were discovered in the late sixties shortly after the discovery of ore near Pioche in 1863. A smelter was built at Bristol Well in the late seventies. The coke ovens provided charcoal for the smelter. Bristol well had a post office and a population of 400. Foundations and three Beehive ovens are all that remain.

East Bench-Key Area: This key area is located in Coarse Silty 5-8 Range Site. The Key Management Species for livestock and wild horses at this study site are Indian Rice Grass and Winter Fat.

Drought Conditions-Coyote Wash: This area is an example of low plant vigor due to drought and grazing.

4. 12:00pm

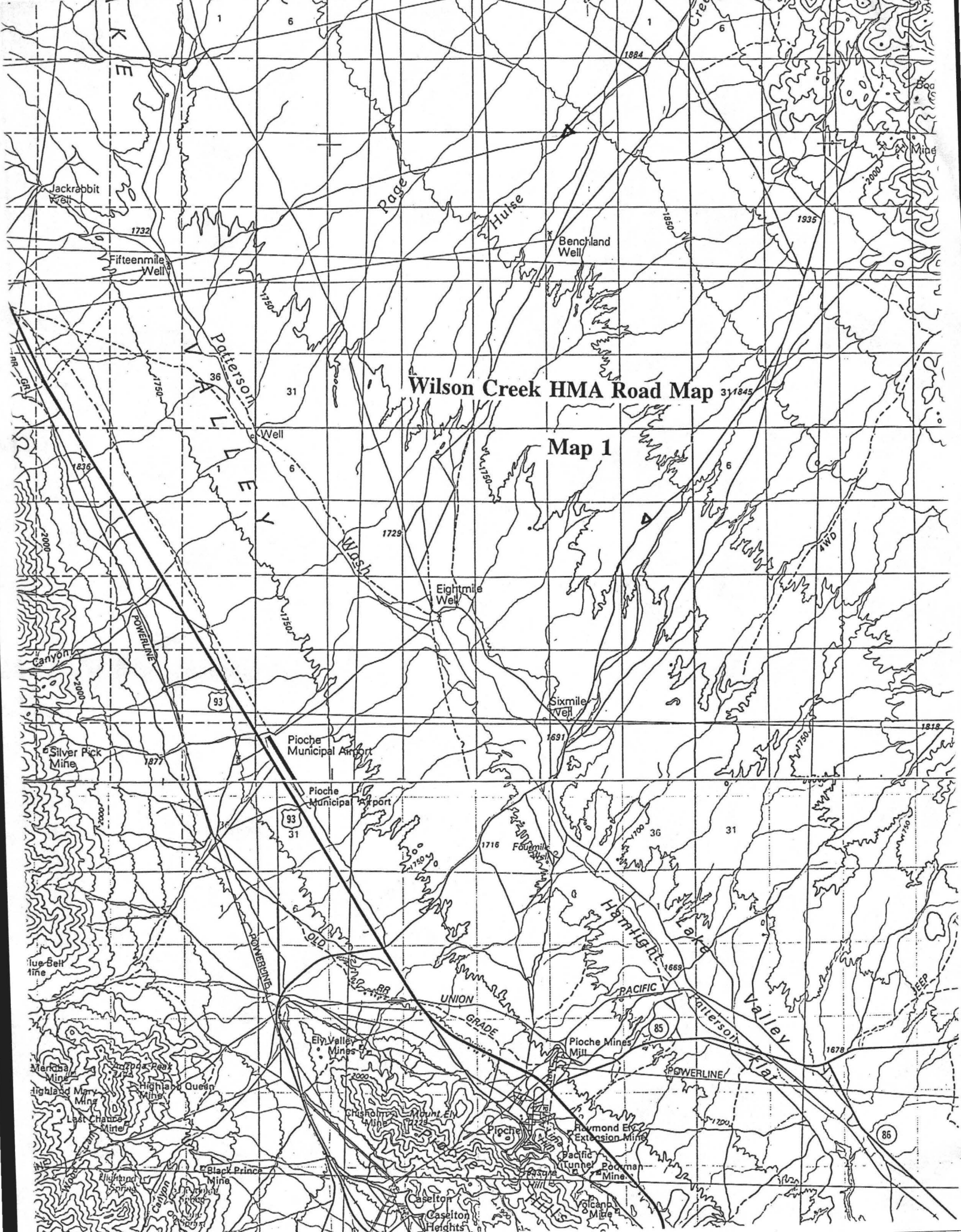
Lunch Coyote Spring

5. 12:30

Dry Lake Valley Division Fence  
Drought comparison of grazed and ungrazed vegetation

6. 13:00

Return to Las Vegas via US 318



# Wilson Creek HMA Road Map 31845

## Map 1

K  
E

Patterson  
36  
Well  
6

Page

Hulise

Benchland  
Well

Wash

Eightmile  
Well

Sixmile  
Well

Piocche  
Municipal Airport

Piocche  
Municipal Airport

UNION  
GRADE

PACIFIC

POWERLINE

Patterson  
Valley

Jackrabbit  
Well

Fifteenmile  
Well

Silver Pick  
Mine

Blue Bell  
Mine

Merced  
Mine

Highland  
Queen  
Mine

Black Prince  
Mine

Ely Valley  
Mines

Christy  
Mine

Mount  
Ely  
Mine

Casleton  
Heights

Piocche  
Mines  
Mill

Pacific  
Tunnel  
Pocman  
Mine

Raymond  
Ely  
Extension  
Mine

Victory  
Mine

1884

1732

1750

1750

1750

1836

2000

2000

1877

2000

2000

1750

1750

1750

1750

1750

1750

1750

1750

1750

1729

1750

1691

1716

1700

1700

1669

1678

1720

1720

1720

1818

1750

1750

1750

1750

1750

1750

93

93

85

85



# WILSON CREEK ALLOTMENT EAST HALF WILD HORSE HERD MANAGEMENT AREAS

R. 66 E.

R. 67 E.

R. 68 E.

R. 69 E.

R. 70 E.

R. 71 E.

T. 8 N.

T. 7 N.

T. 6 N.

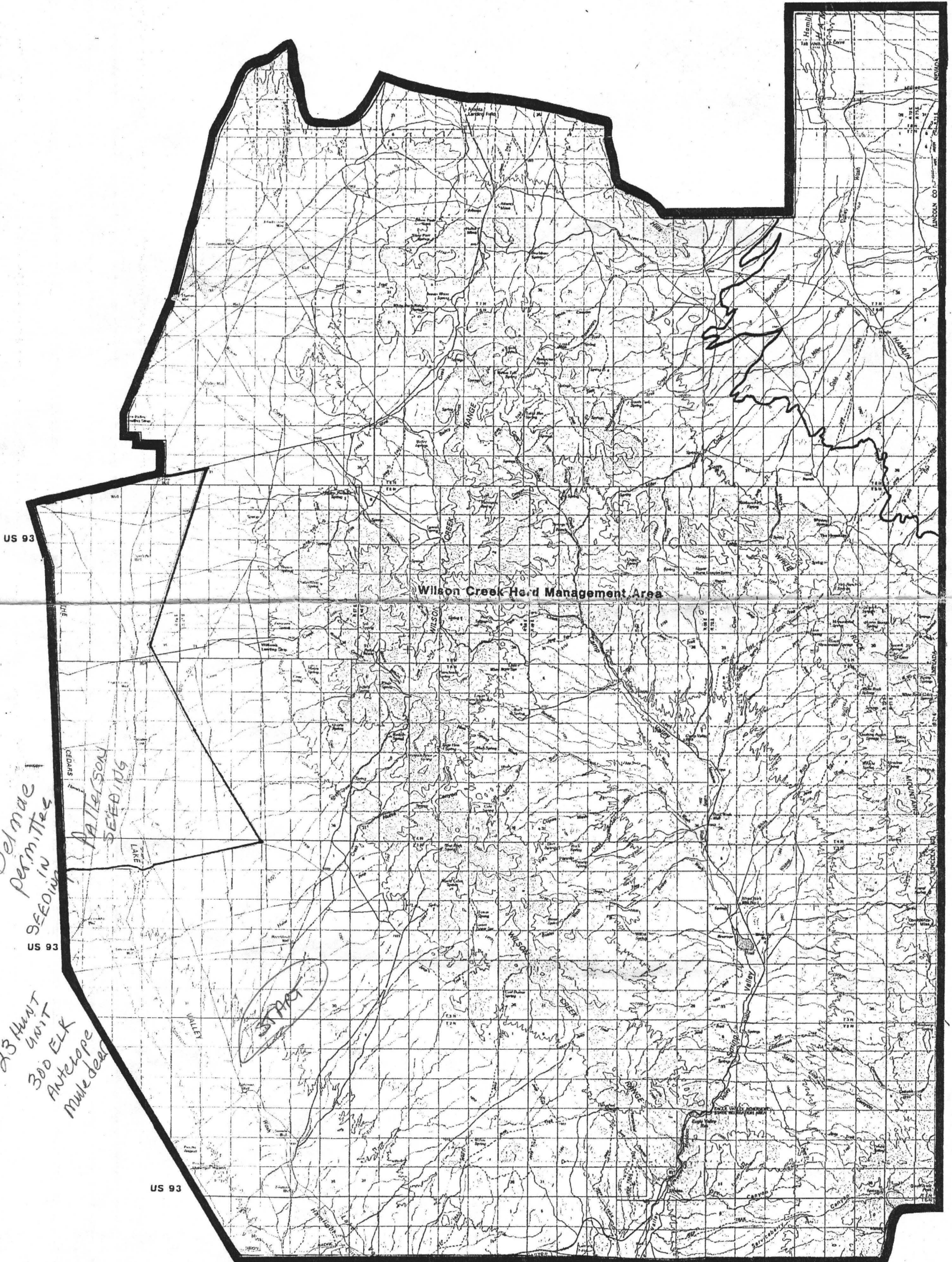
T. 5 N.

T. 4 N.

T. 3 N.

T. 2 N.

T. 1 N.



*Delmarc  
Permits  
SEEDING  
CEDARS*

*PATTERSON  
SEEDING  
LAKE*

*23 HUNT  
UNIT  
300 ELK  
ANTELOPE  
MULE DEER*

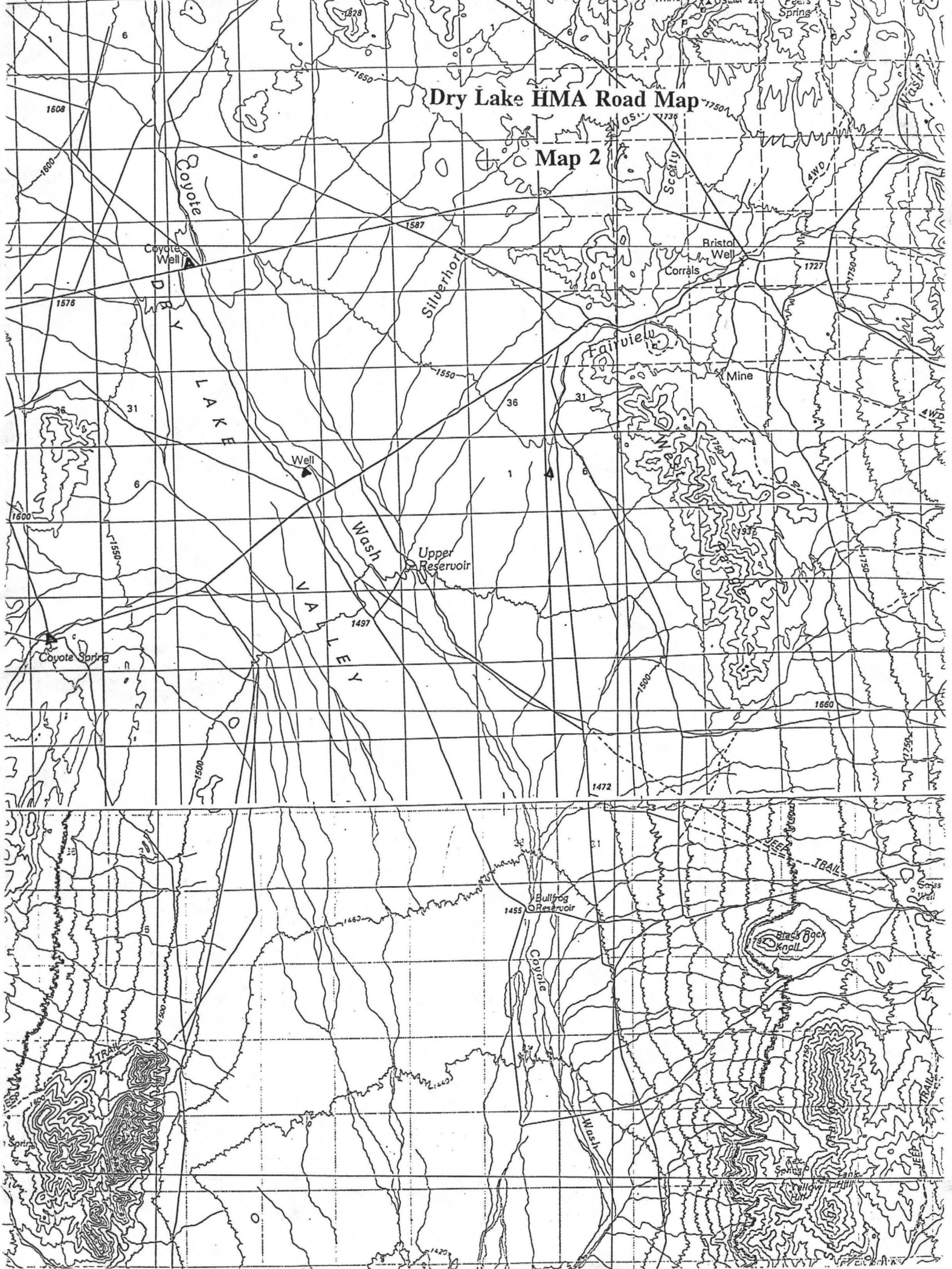
*STPAC*

*Gleason Ranch  
50 head  
ELK*



# Dry Lake HMA Road Map

## Map 2



# WILSON CREEK ALLOTMENT WEST HALF WILD HORSE HERD MANAGEMENT AREAS

R. 62 E.

R. 63 E.

R. 64 E.

R. 65 E.

R. 66 E.

R. 67 E.

T. 6 N.

T. 5 N.

T. 4 N.

T. 3 N.

T. 2 N.

T. 1 N.

T. 1 S.

