

Winnemucca Dist
North Stillwater HMA

2/21/07 m

UNITED STATES DEPARTMENT OF THE INTERIOR
BUREAU OF LAND MANAGEMENT
Winnemucca Field Office
5100 East Winnemucca Boulevard
Winnemucca, Nevada 89445
775-623-1500

In Reply Refer To:
4720 (NV-022.44)

February 21, 2007

Memorandum

To: N Stillwater HMA File

From: Glenna Eckel, Wild Horse & Burro Specialist

Subject: Wild Horse Reporting Verification

I received notice from Celeste Mimnaugh, Range Specialist, that her permittee, Clint Casey, had been seeing about 70 head of wild horses in the Kyle Springs area. This is at the northeast end of the North Stillwater Herd Management Area (HMA) in the Pleasant Valley allotment. The established appropriate management level (AML) for wild horses in this area is zero. The next tentatively scheduled gather in this area is fall 2007.

On Monday, February 5th, 2007, I stopped by the Pleasant Valley Ranch to talk with Clint. He was out, but I spoke with his son Cash. Cash gave me details of where they'd been seeing horses. I drove to the area to check for horses (see map of route). While I only saw a couple small groups of horses, by the looks of the trailing and manure (photos 1-4) many more are present. His report of 70 head seems reasonable. I updated the February 2007 population estimate number for this HMA and allotment.

This area should be captured and all wild horses removed at the next gather, tentatively scheduled for fall 2007.

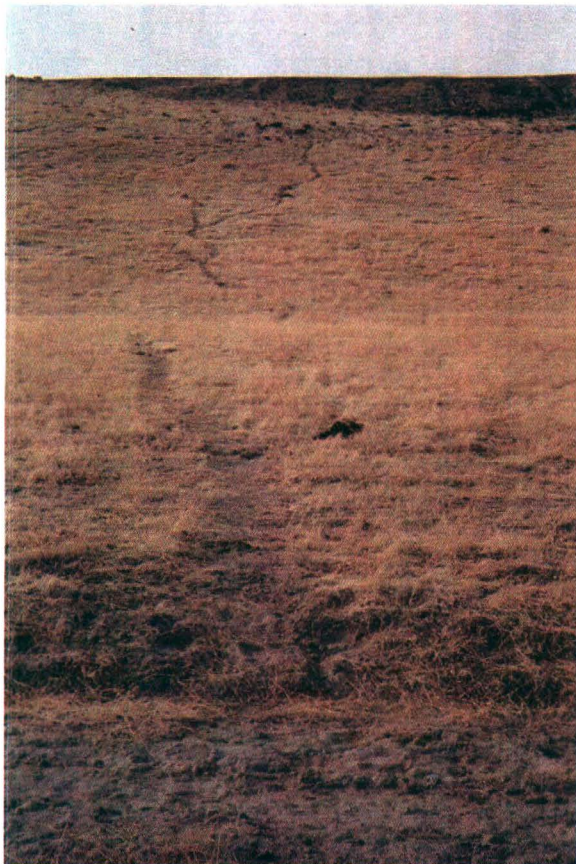


Photo 1. Stop A on map, trailing looking upslope (west).



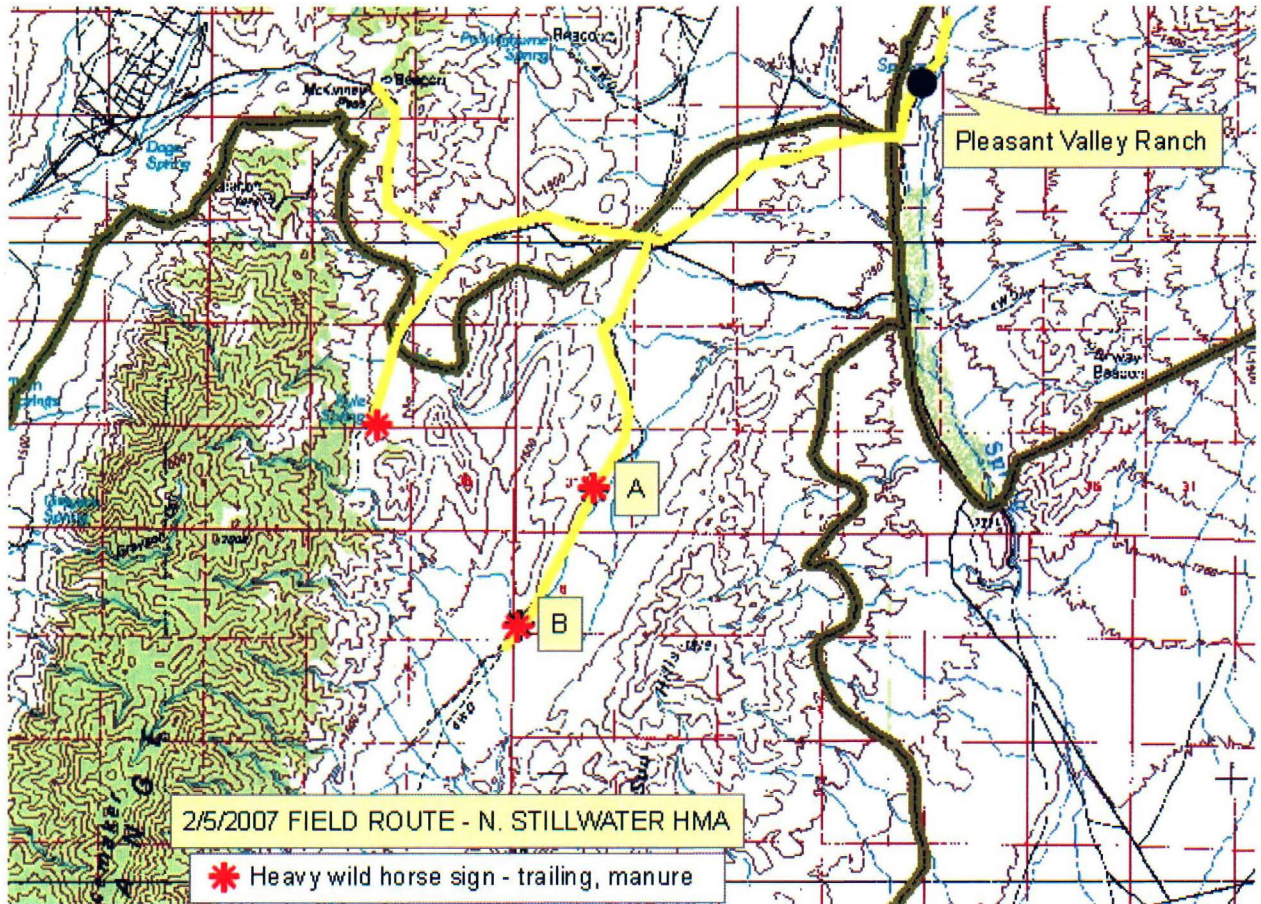
Photo 2. Stop A on map, trailing looking downslope (east).



Photo 3. Stop B on map, trailing looking upslope (west).



Photo 4. Stop B on map, trailing looking downslope (east).



Map 1: Route traveled, 2/5/07.

Photo CD: 1558

Attachments (2)

- 1) Map of area with Grazing Allotments and horse AML (1 pg)
- 2) Hardcopy photos (1 pg)

North Stillwater HMA Monitoring Photos

Rawhide & S. Rochester Allotments

Glenna Eckel, WH&B Specialist

August 2007

Wild horse use only in Rawhide and mixed use in S. Rochester.



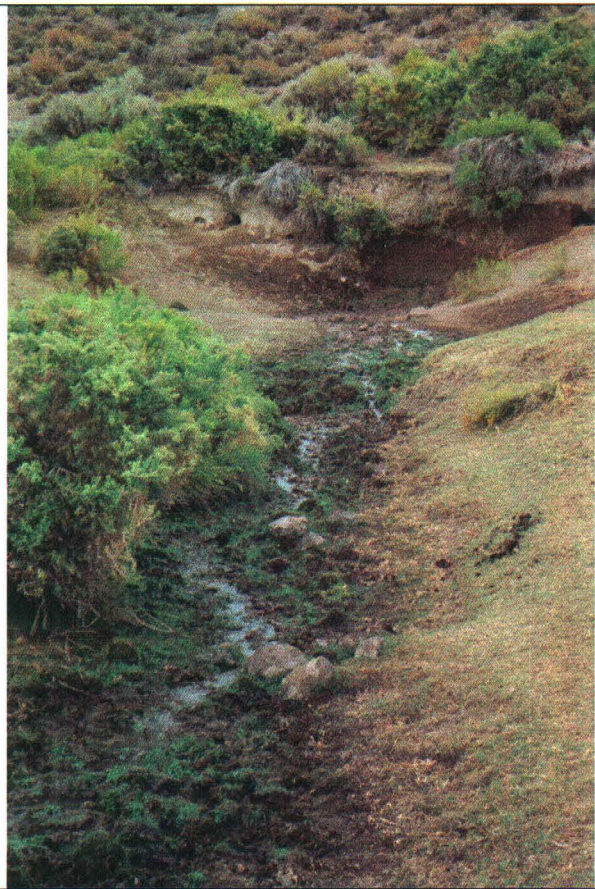
Grayson Springs loafing area, Rawhide Allotment.



Mustang Spgs reservoir, S. Rochester.



Water in Mustang Spgs reservoir.



Grayson Spring source.



Grayson Spring riparian.



Riparian exclosure at Mustang Spgs.



Riparian cage at Mustang Spgs.



Hughes Canyon riparian cage, upstream.



Hughes Canyon riparian, downstream.



Cornish Canyon Spg, source.



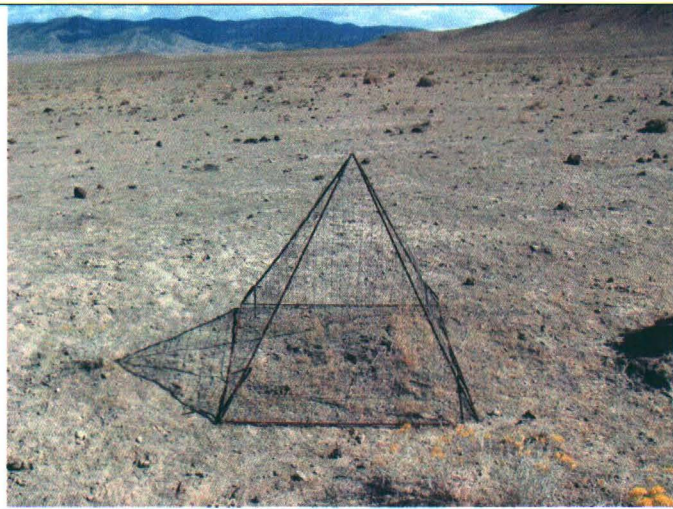
Cornish Canyon loafing area.



Cornish Canyon riparian, upstream.



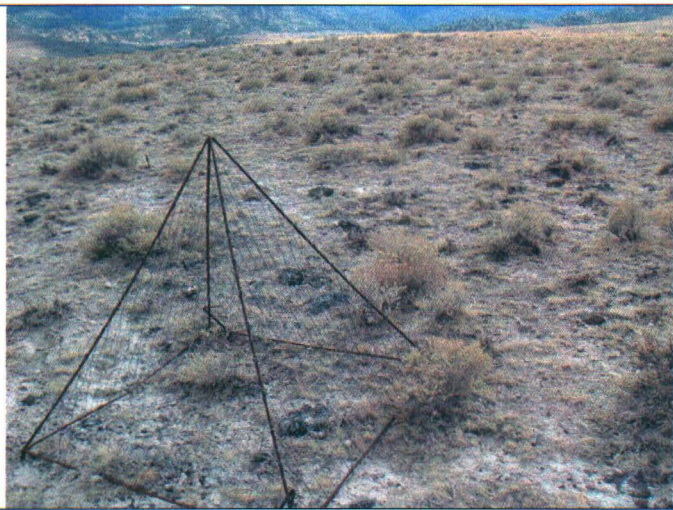
Cornish Canyon riparian, downstream.



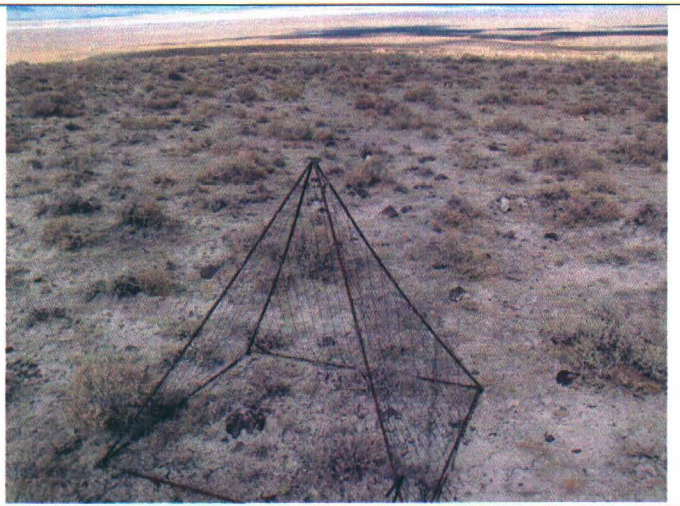
Logan upland cage, near.



Logan upland cage, far.



Kitten upland cage, south



Kitten upland cage, north.