



United States Department of the Interior

BUREAU OF LAND MANAGEMENT

Winnemucca District Office
705 East 4th Street
Winnemucca, Nevada 89445

IN REPLY REFER TO:
4130
(NV-026.14)

September 14, 1993

Andrew F. Jackson
P.O. Box 69
Gerlach, NV 89412

Dear Mr. Jackson:

On September 7, 1993, Grover accompanied Leigh Redick and Arn Berglund to assess utilization levels on Wagon Tire Creek in the Dolly Varden Pasture (NDOW had been contacted, but was unable to attend).

The majority of the creek had not reached the 30% use level on key species as identified in the Buffalo Hills Final Multiple Use Decision (FMUD). There were two areas, however, where use on grasses, rushes, and sedges had met or exceeded 30%. The areas identified were:

(1) the stretch south of Heward Reservoir, from the Cottonwood drift fence west for about one quarter mile, and

(2) a stretch on the main fork of Wagon Tire Creek, from Wagon Tire Spring east for about one half mile (the lower end of this reach was just approaching 30%). See enclosed maps. These areas were identified and discussed with Grover.

I recognize that wild horses are still not at the AML set in the FMUD and that you have been riding to keep cows out of the riparian areas. However, to follow the management actions outlined in the FMUD, it is necessary for you to move cattle from this area of the pasture and to increase riding efforts to keep cattle from concentrating along these sections of Wagon Tire Creek. The area between the lower end of Red Mountain Creek and Negro Creek was considered as one place to push the cows.

I appreciate your efforts and the willingness with which you have worked with us.

If you have any questions please contact Leigh Redick or Rich Adams at (702) 623-1500.

Sincerely yours,

Bud C. Cribley, Area Manager
Sonoma-Gerlach Resource Area

Enclosure

cc:
Commission for the Preservation of Wild Horses
NDOW
Sierra Club
WHOA

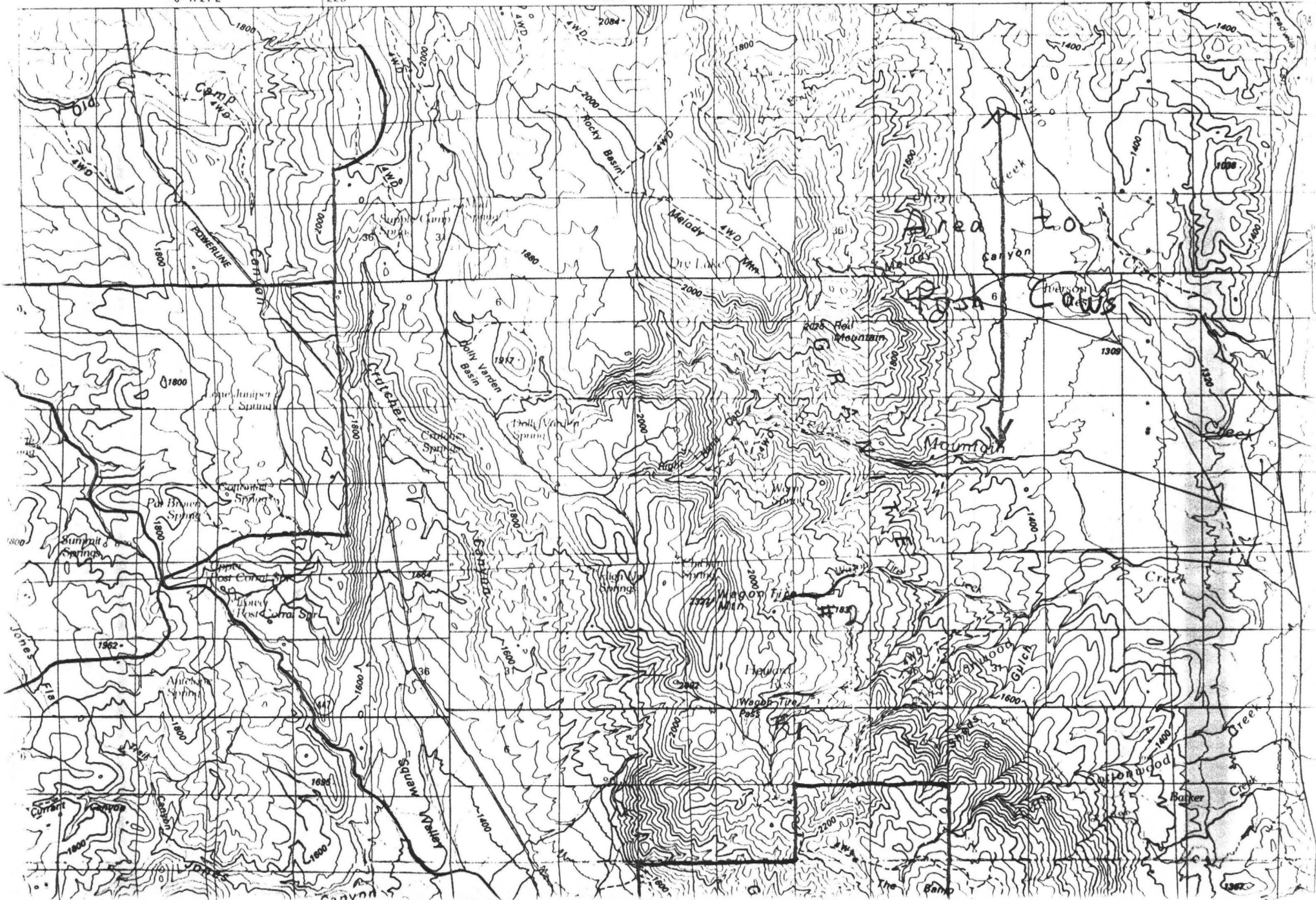
78 R 21 E

225

R 22 E 30'

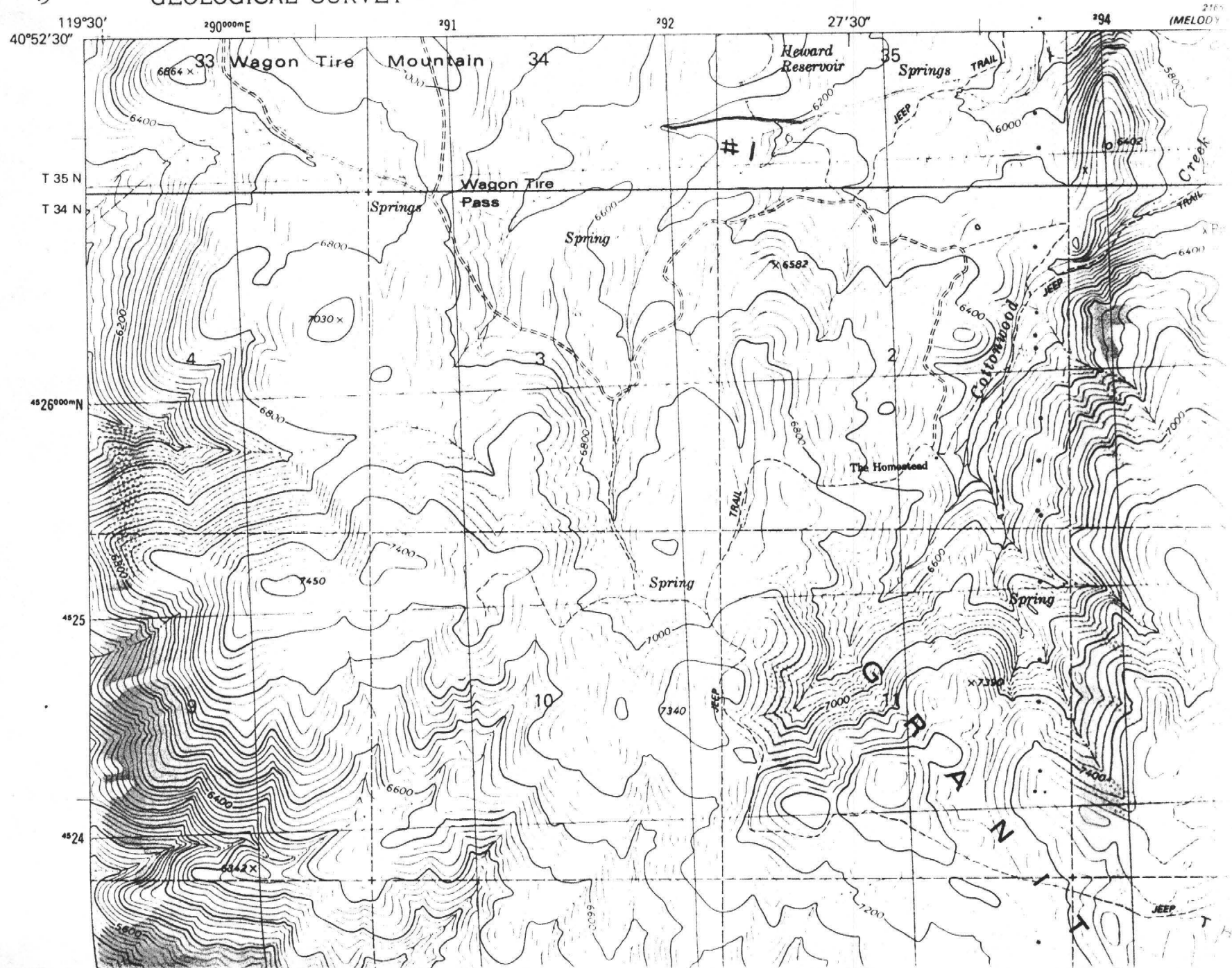
250

275 | R 23 E 30

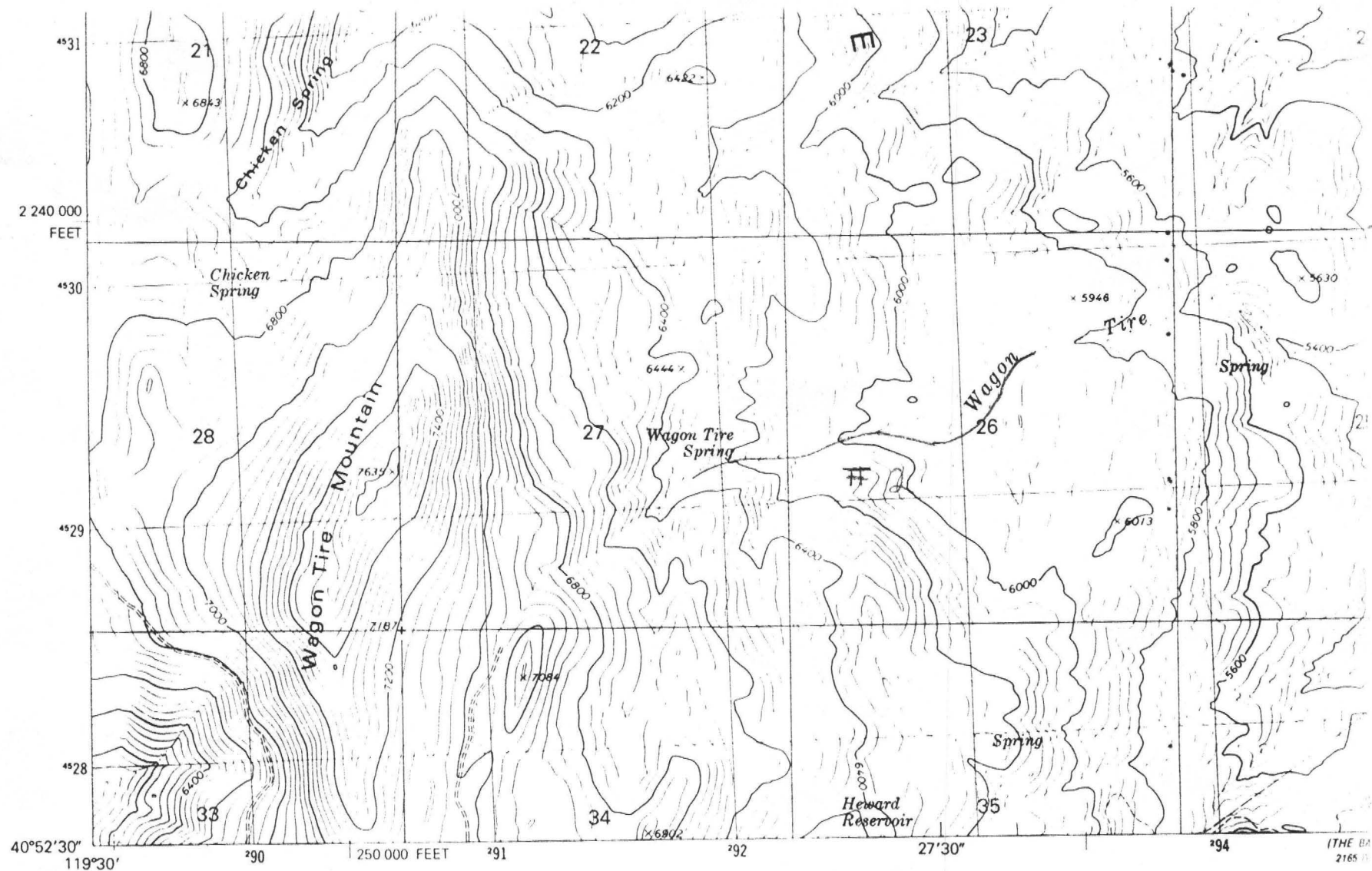


285 1 NE
(GRUTCHER CANYON)

UNITED STATES
DEPARTMENT OF THE INTERIOR
GEOLOGICAL SURVEY



2160
(MELODY)



(SQUAW VALLEY)
2085 / SE

Mapped, edited, and published by the Geological Survey

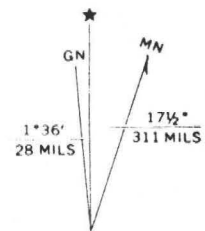
Control by USGS and NOS/NOAA

Topography by photogrammetric methods from aerial photographs taken 1974. Field checked 1975
Map edited 1980

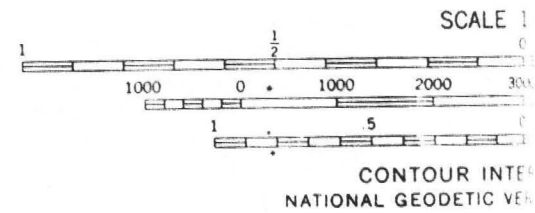
Projection and 10,000-foot grid ticks: Nevada coordinate system, west zone (transverse Mercator)
1000-meter Universal Transverse Mercator grid, zone 11
1927 North American Datum

To place on the predicted North American Datum 1983
move the projection lines 16 meters north and
85 meters east as shown by dashed corner ticks

Fine red dashed lines indicate selected fence and field lines where generally visible on aerial photographs. This information is unchecked



UTM GRID AND 1980 MAGNETIC NORTH DECLINATION AT CENTER OF SHEET



THIS MAP COMPLIES WITH NATIONAL
FOR SALE BY U. S. GEOLOGICAL SURVEY, DENVER
A FOLDER DESCRIBING TOPOGRAPHIC MAPS