



United States Department of the Interior

BUREAU OF LAND MANAGEMENT

Winnemucca District Office
705 East 4th Street
Winnemucca, Nevada 89445



IN REPLY REFER TO:

4700
(NV-026.8)

APR 27 1992

Commission for the Preservation of
Wild Horses and Burros
Ms. Cathy Barcomb
Stewart Facility
5500 Snider Avenue
Carson City, NV 89710

Dear Ms. Barcomb:

Enclosed is the final Wild Horse and Burro Removal Plan for Checkerboard Lands within the Sonoma-Gerlach Resource Area located in the Humboldt, Trinity Range and Antelope Range Herd Areas, and the Hot Springs Mountains. The purpose of the removal is to remove animals that were missed during previous captures and to remove animals that have permanently moved into the checkerboard lands.

The action is in conformance with the Sonoma-Gerlach MFP-III decision WH&B 1.3 that is to remove all wild horses and burros from checkerboard Herd Areas unless a cooperative agreement providing for the retention and protection of wild horses and burros is consummated with the private land owner(s). Cooperative agreements have not been obtained for the areas listed above.

Based upon comments received on the draft removal plan the following sentence was added at the end of Population and Removal Data, page 2, D.; to clarify the process that will be followed to conduct a fertility control procedure and release of animals into an HMA on the District.

A fertility control procedure and subsequent release of animals in another HMA on the District will not take place unless objectives have been developed and approved, and an environmental assessment of the proposed action has been prepared and adopted.

If you have any questions regarding the removal plan contact Tom Seley at (702) 623-1500.

Sincerely yours,

Bud Cribley
Area Manager
Sonoma-Gerlach Resource Area

Enclosure



United States Department of the Interior

BUREAU OF LAND MANAGEMENT

Winnemucca District Office
705 East 4th Street
Winnemucca, Nevada 89445

4-27-92
TAKE
PRIDE IN
AMERICA

IN REPLY REFER TO:

4700
(NV-026.8)

Commission for the Preservation of
Wild Horses and Burros
Ms. Cathy Barcomb
5500 Snider Avenue
Carson City, NV 89710

APR 27 1992

Dear Ms. Barcomb:

The Bureau of Land Management proposes to gather excess wild horses and burros from public lands in the State of Nevada no sooner than 28 days from the date of this letter.

The proposed gathering will be conducted in the Winnemucca District in the areas shown on the enclosed maps and as described below.

<u>Herd Area/ Area Name</u>	<u>Environmental Analysis Record Number</u>	<u>Reason for Gathering</u>	<u>Approximate Number to be Removed</u>	<u>Approximate Number to Remain</u>
Antelope Range	NV-020-7-24	Land Use Plan/ Request from land owner(s)	213(H)	0
Humboldt	NV-020-7-24	Land Use Plan/ Request from land owner(s)	67(H)	0
Trinity Range	NV-020-7-24	Land Use Plan/ Request from land owner(s)	4(H)	0
Hot Springs Mtns.	NV-020-7-24	Land Use Plan/ Request from land owner(s)	33(B)	0

Sincerely,

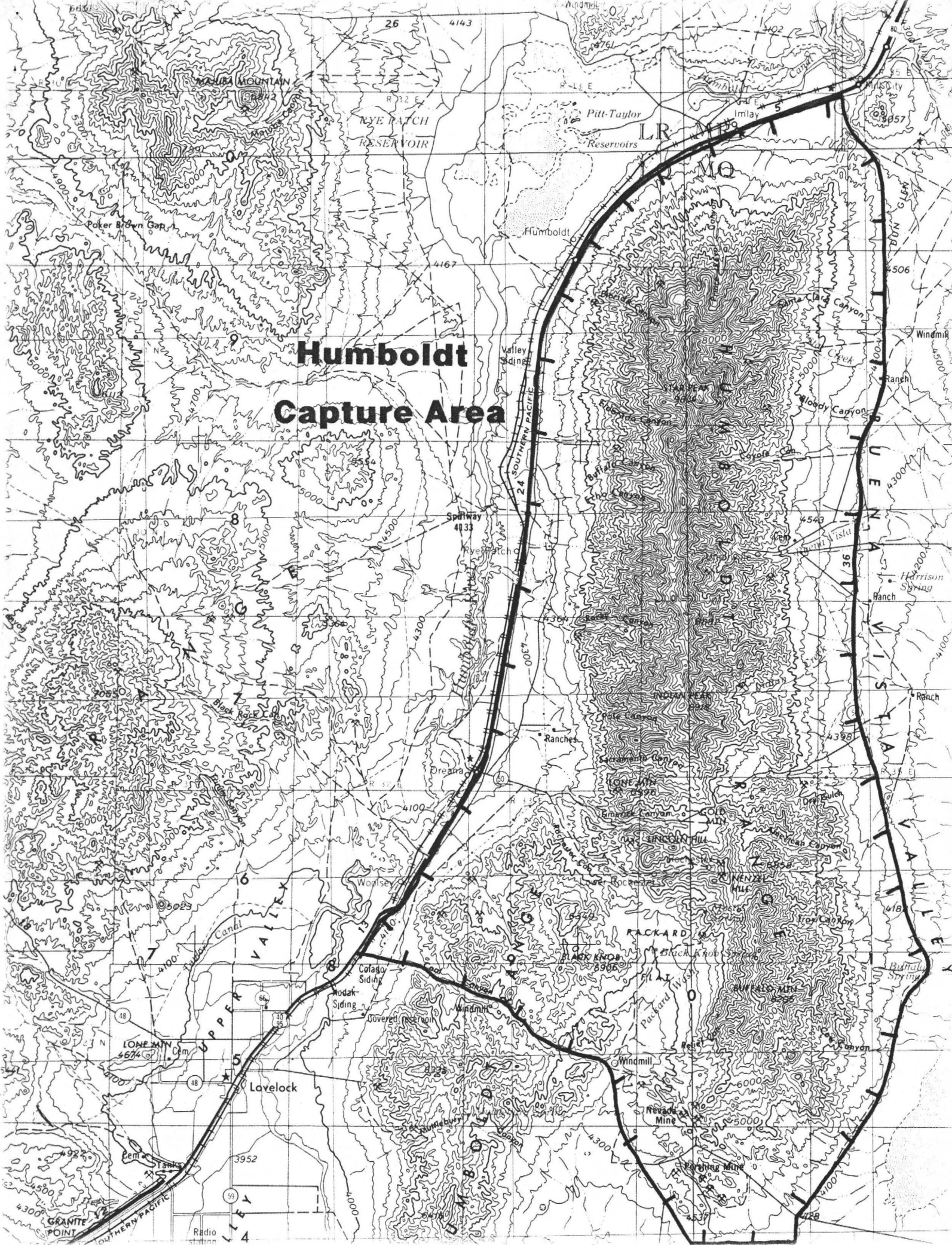
District Manager

3 Enclosures

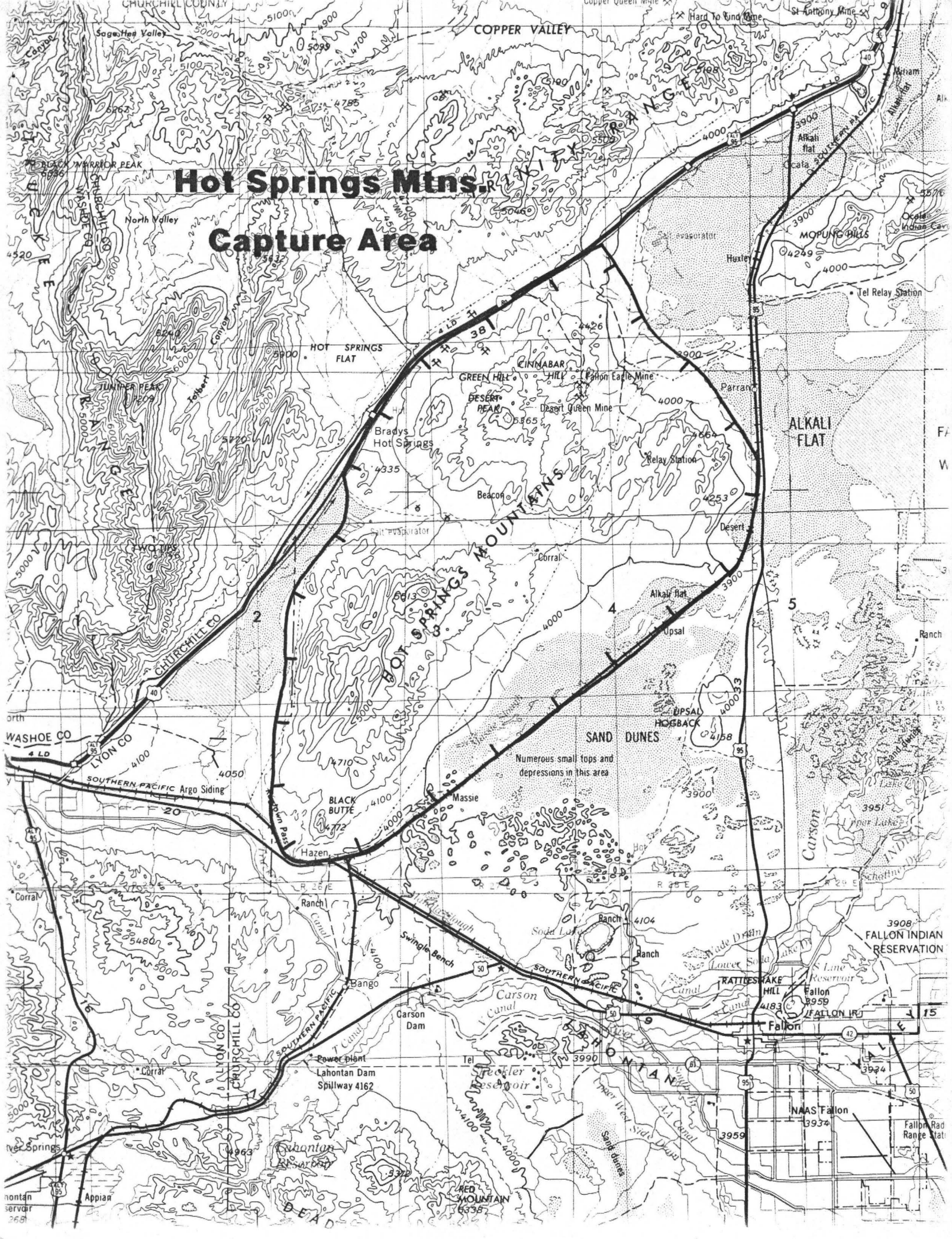
- 1 - Map of Antelope and Trinity Range Gathering Area (1 p)
- 2 - Map of Hot Springs Mtns. Gathering Area (1 p)
- 3 - Map of Humboldt Gathering Area (1 p)

cc: NV-930
Palomino Valley Corral Manager

Humboldt Capture Area



Hot Springs Mtns. R. Capture Area

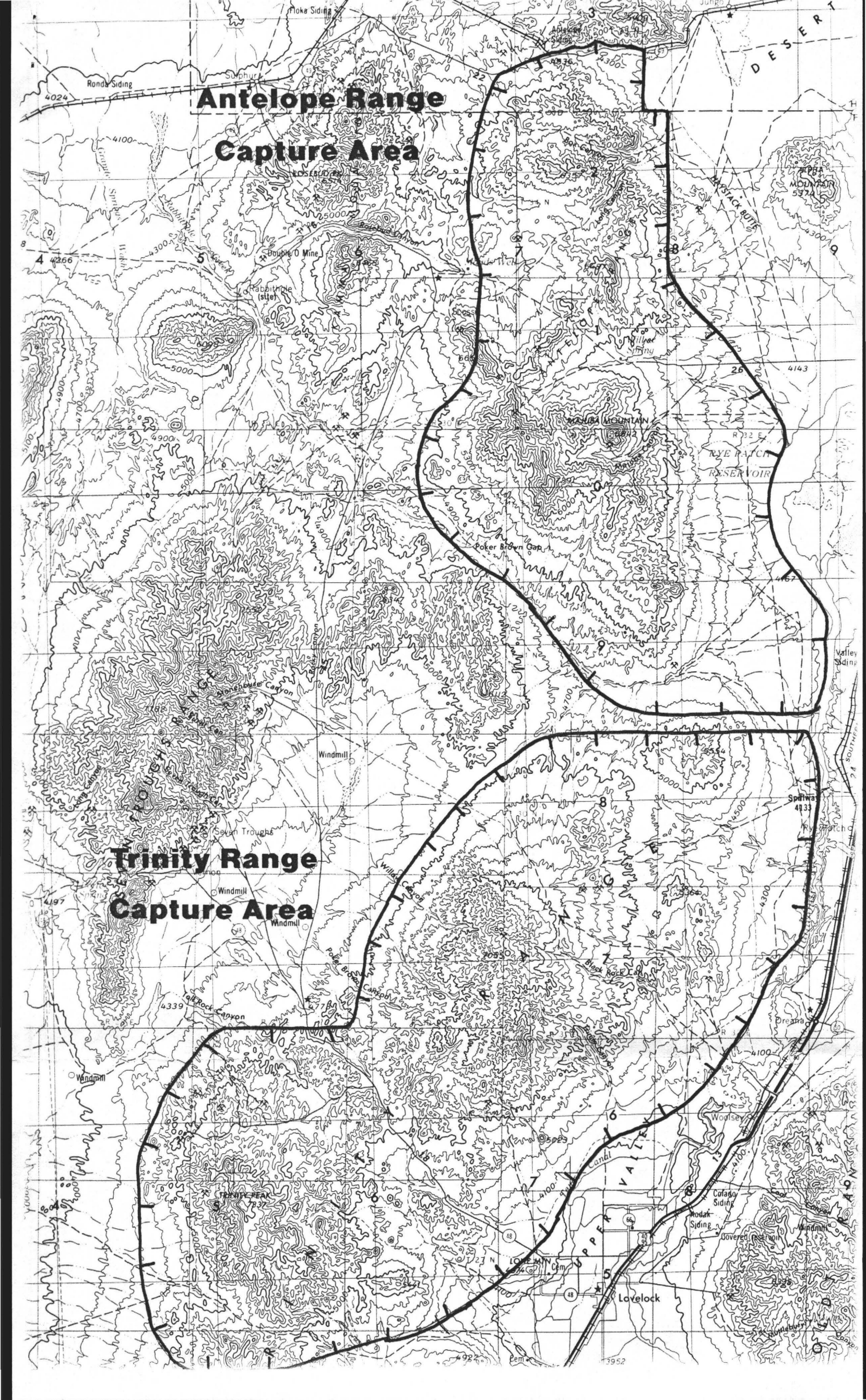


Antelope Range

Capture Area

Trinity Range

Capture Area



3-26-92



United States Department of the Interior



BUREAU OF LAND MANAGEMENT
WINNEMUCCA DISTRICT OFFICE
705 EAST 4TH STREET
WINNEMUCCA, NEVADA 89445

IN REPLY REFER TO:

4700
(NV-026.8)

MAR 26 1992

Wild Horse Organized Assistance
Attn: Dawn Lappin
P.O. Box 555
Reno, Nevada 89504

Dear Mrs Lappin:

In response to your February 20, 1992 letter, we received the initial request to remove wild horses from the Humboldt Herd Area (HA) from R.J.B. Development Co. in December 1989. They requested the removal of approximately 25 wild horse from their land in the Rye Patch Allotment which is in the Humboldt HA. We have also received two letters requesting the removal of all wild horses and burros from private land owned by the Atchison, Topeka and Santa Fe Railroad in the Antelope Range, Humboldt and Trinity Range HA's, and from the Hot Springs Mountains. I have attached copies of the requests for your files.

We have attempted to removal all wild horses and burros from the Antelope Range, Humboldt and Trinity Range HA's. Several weeks after completion of the 1986 removal in the Humboldt HA, five horses were observed which had been missed during the removal. At the completion of the 1987 removal in the Antelope Range there were two studs left which we were unable to capture. The horses currently found in the Antelope Range appear to have migrated into the area from the Seven Troughs Herd Management Area. The horses found in the Trinity Range closely resemble animals that were captured during the 1987 removal which indicates they were missed in 1987.

We are currently conducting a re-evaluation of the Blue Wing/Seven Troughs Allotments and have tentatively proposed a fence that would separate the Seven Troughs and Kamma Mountains HMA's from the Antelope Range HA. Once constructed this fence should stop the immigration of wild horses and reduce or eliminate the need for any future removals from the Antelope Range HA. There has not been any indication that horses or burros have immigrated into the Trinity Range or Humboldt Range HA's. It is not known how the burros found in the Hot Springs Mountains arrived in the area. We do know that they did not immigrate into the area since there are no adjacent HMA's and it is geographically isolated from the Truckee Range HA by Inter-State 80.

The distribution flights conducted in January/February 1991 did not include the Humboldt HA, Trinity Range HA, or the Hot Springs Mountains. There were 114 horses found on the Antelope Range in February 1991. There have been two additional distribution flights conducted on the Antelope Range and one on the Humboldt HA. A aerial census was conducted on the Trinity Range HA, Humboldt HA, North Stillwater HMA and Tobin Range HMA in August 1992. Attached are copies of the results of the distribution flights and helicopter census.

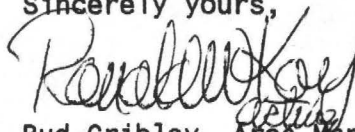
At this time the District has not developed guidelines, objectives or a marking system to implement a fertility control procedure. A fertility control procedure and subsequent release of animals into another HMA within the district will not take place unless guidelines and objectives have been developed and approved, and an environmental assessment of the proposed action has been prepared.

The statement "foals shall not be left behind" is found both in our removal plan and removal contract. The purpose of the statement is to require the Project Inspectors and Contractor to ensure that during the process of herding animals to the capture site that foals do not become separated from their mothers (leppy) and if a foal is not able to keep up with the band that it is picked up and transported to the capture site rather than being left alone on the range.

If during the course of the removal we find an animal that is deformed, sick or severely injured we will destroy the animal on site as stated in Trapping and Care, item A. 12. rather than transport the animal to Palomino Valley to be put down. We agree that animals with old injuries that are in otherwise good condition should be left on the range to live out their lives. However, since this is a total removal of animals from areas that are not to be managed for wild horses and burros, it will be necessary to transport those animals to Palomino Valley for a subsequent release into a suitable HMA when all environmental documentation has been completed.

If you have any questions please feel free to contact Tom Seley at 623-1500.

Sincerely yours,



Bud Cribley, Area Manager
Sonoma-Gerlach Resource Area