

**Memorandum**

DEPARTMENT OF THE INTERIOR  
BUREAU OF LAND MANAGEMENT

IN REPLY REFER TO:  
4700  
(N-023.3)

74-79  
M  
ORIGINAL IN  
WARM SPRINGS  
CANYON  
FILE

To : File

FROM : Les Boni, Wildlife Biologist, Winnemucca

SUBJECT : Wild Horse and Burro Inventory

Date: 10/2/79

September 17 and 18, 1979, I conducted a wild horse and burro inventory in the Soldier Meadows Allotment. The results are listed below by that portion of each mountain range located inside the allotment boundary.

<u>Area</u>	<u>Horses</u>		<u>Burros</u>
	<u>Adults</u>	<u>Colts</u>	
Black Rock Range	368	95	0
Warm Springs Canyon	325	86	1
Calico Mountains	242	47	0
TOTAL	935	228	1

Seven adults and two colts included in the Black Rock Range above were located on the ridge separating the Soldier Meadows and Paiute Meadows Allotments. Since this boundary is not fenced, these were included in the Soldier Meadows total.

In addition to these totals, horses were observed on the Summit Lake Indian Reservation. Although these are no doubt wild horses, they were not counted, with the exception of eight horses which were close to the boundary fence.

Horses appeared to be in good condition with the exception of those in the Calico Mountains. Here their ribs could easily be seen from the air, and it was evident that their condition was poor. The ratio of colts to adults was also the lowest in this area.

Only one burro was located in the Soldier Meadows Allotment, despite the extra attempt made to locate them. At least 15 additional burros are known to be present on the southeast end of the Warm Springs Canyon area and were observed by Soldier Meadows Ranch employees on September 16, 1979.

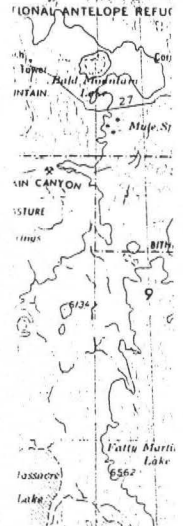
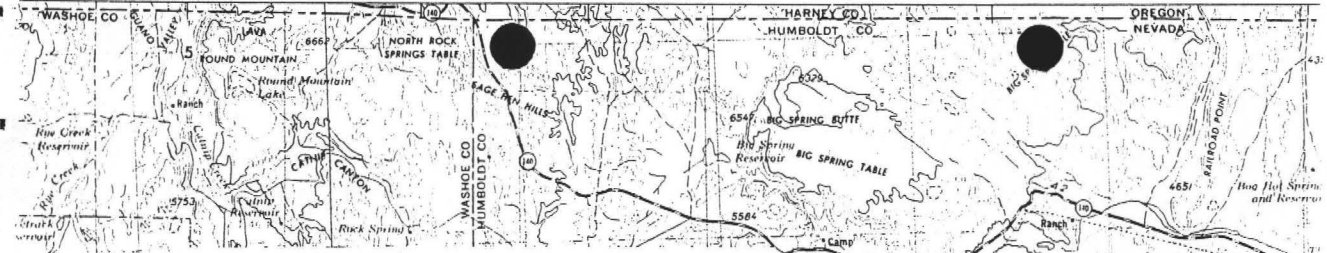
In addition to the areas mentioned above, the east side of the Black Rock Range was inventoried (Paiute Meadows Allotment). The count for this area and the total number of horses inventoried for the mountain range are listed on the following page.

	<u>Adults</u>	<u>Colts</u>
East Side	384	87
West Side	<u>368</u>	<u>95</u>
TOTAL	752	182

Conditions for inventorying horses were very satisfactory, and I feel that the count was a good one.

*Her Boni*

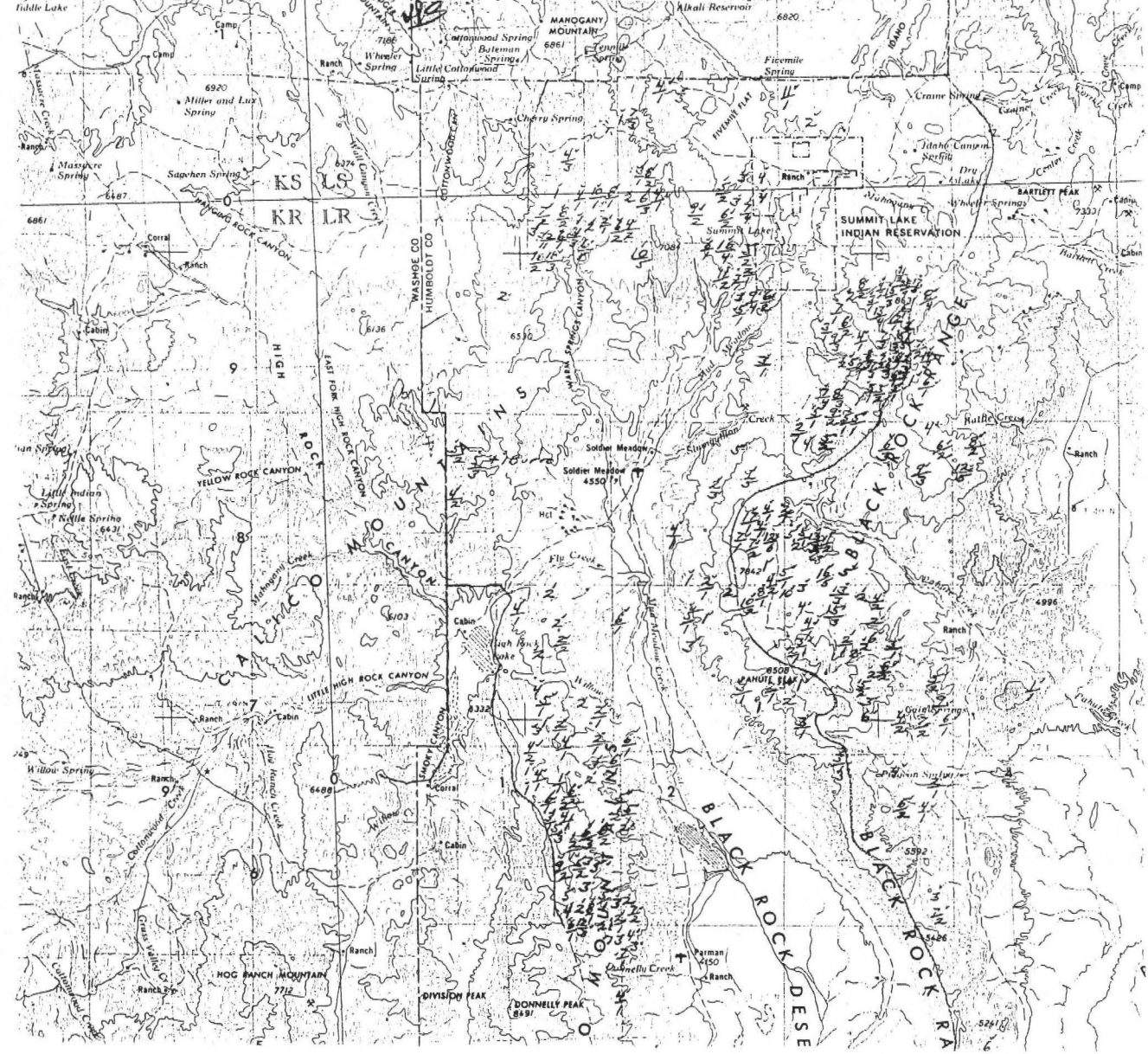
X



Area	Horses	Burros
Warm Springs Canyon	September 18, 1979	
Adults	325	1
Colts	86	0
Calico Mountains	September 18, 1979	
Adults	242	0
Colts	47	0
*Black Rock Range	September 17, 1979	
East Side		
Adults	384	0
Colts	87	0
West Side		
Adults	368	0
Colts	95	0
<b>Total</b>		
Adults	752	0
Colts	182	0

\* Refer to memo to the file (4700), October 2, 1979

*DICITIZED 2/27/82 FROM ORIGINAL MAP*



Memorandum

DEPARTMENT OF THE INTERIOR  
BUREAU OF LAND MANAGEMENT

2-12-79  
IN REPLY REFER TO:

4700  
(N-023.3)

ORIGINAL IN  
WARM SPRINGS CANYON  
FILE

To : Wild Horse and Burro Inventory File

Date: February 12, 1979

FROM : Wildlife Biologist, Winnemucca

SUBJECT: Wild Horse and Burro Inventory

February 5, 6 and 7, 1979, I conducted a wild horse and burro inventory of the Warm Springs Canyon area (which is that portion of the Calico Mountains northwest of Soldier Meadows), the Calico Mountains and the Black Rock Range. The results are listed below.

Soldier Meadows Allotment listed by portion of mountain ranges within the allotment.

<u>Area</u>	<u>Horses</u>	<u>Burros</u>
Warm Springs Canyon	260	16
Calico Mountains	240	0
Black Rock Range	<u>337</u>	<u>0</u>
Total animals in allotment	837	16

In addition nine wild horses were observed inside the Summit Lake Indian Reservation fence along the western boundary. The gates were open, and it was obvious that the horses were traveling back and forth between the allotment and reservation.

Total Animals Inventoried

<u>Mountain Range</u>	<u>Horses</u>		<u>Burros</u>	
	<u>Adult</u>	<u>Yearlings</u>	<u>Adult</u>	<u>Yearlings</u>
Warm Springs Canyon	234	37	13	3
Calico Mountains	372	44	0	0
Black Rock Range	<u>499</u>	<u>99</u>	<u>0</u>	<u>0</u>
Total	1105	180	13	3
Summit Lake Indian Reservation	8	1	0	0

Existing conditions were good for censusing horses. The upper elevations were covered with snow, while the midslopes contained patches of bare ground around rocks, tallus and on south exposures. There was a light snow cover on the lower elevations. Brush, rocks and patches of bare ground were easily visible from the air.

There was some difficulty in distinguishing light chestnut and palomino horses on snow. This was especially true at the lower elevations when the horses did not move from the aircraft. These colors blended well with the protruding brush.

Despite this difficulty, I feel that this was a good inventory. Although there is no doubt that some horses were not counted, this holds true on any inventory. I do not feel that the numbers missed are any greater than on those inventories conducted in the past.

*Les Boni*



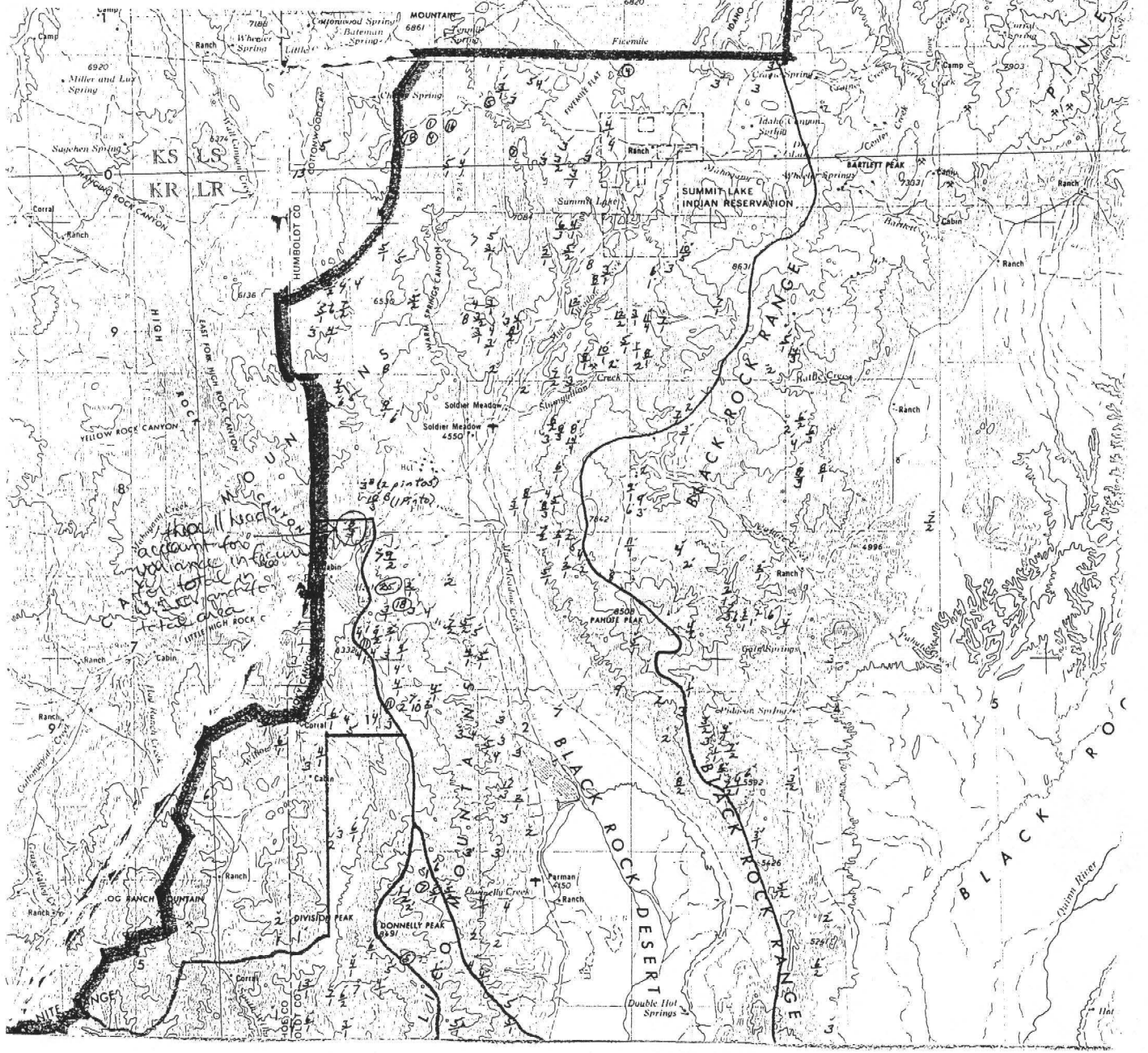
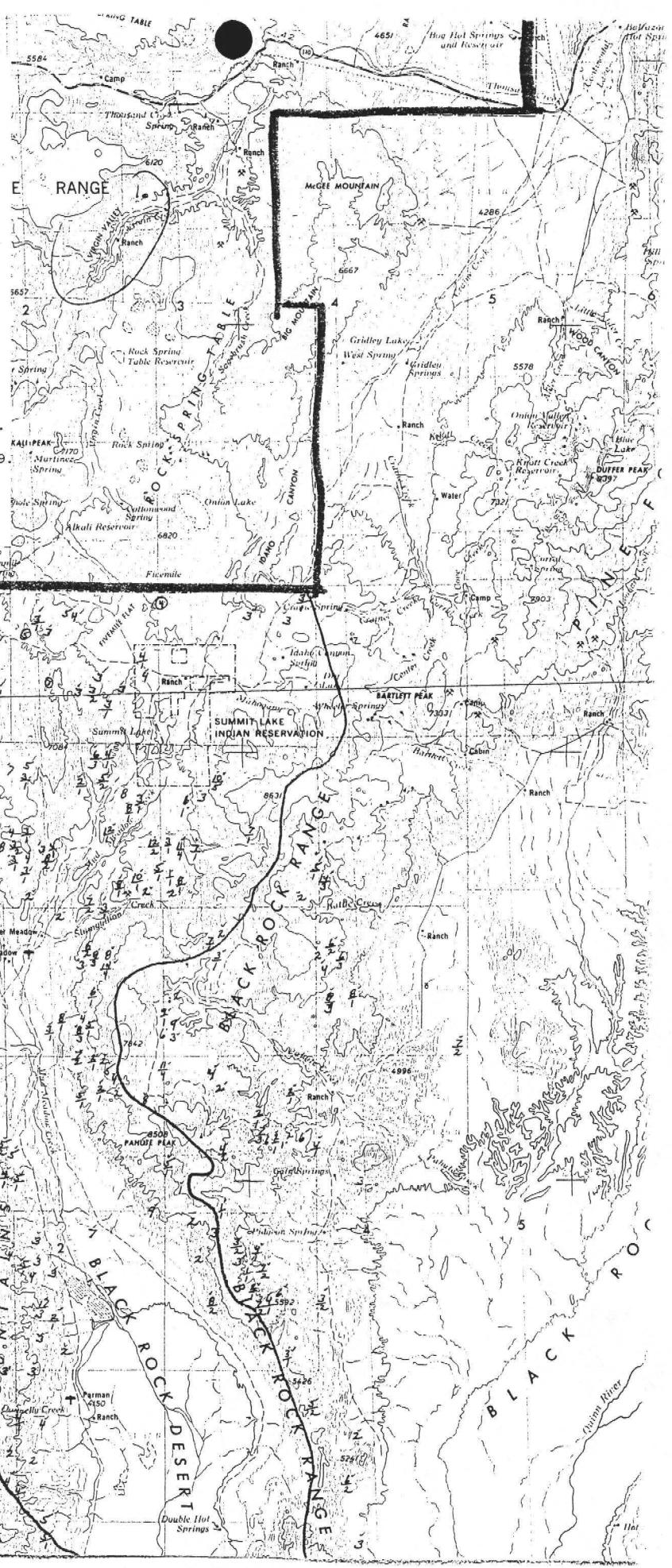


Warm Springs Canyon		Horses	Burros
February 5, 1979			
Adults	234	16 1/2	
Yearlings	37	3	
Total	271	19 1/2	
Calico Mountains			
February 7, 1979			
Adults	372		
Yearlings	44		
Total	416		
Black Rock Range			
February 6, 1979			
Adults	499	East	
Yearlings	99	37	261
Total	598		

Summit Lake Indian Reservation		Horse	Burros
Adults	8		
Yearlings	1		
Total	9		

\* Yearlings include all animals over 6 months of age.  
 \*\* For number of horses in Soldier Meadows Allotment, refer to memo to the file (4700), February 12, 1979.

016 17200 3/10/78 FROM ORIGINAL MAP

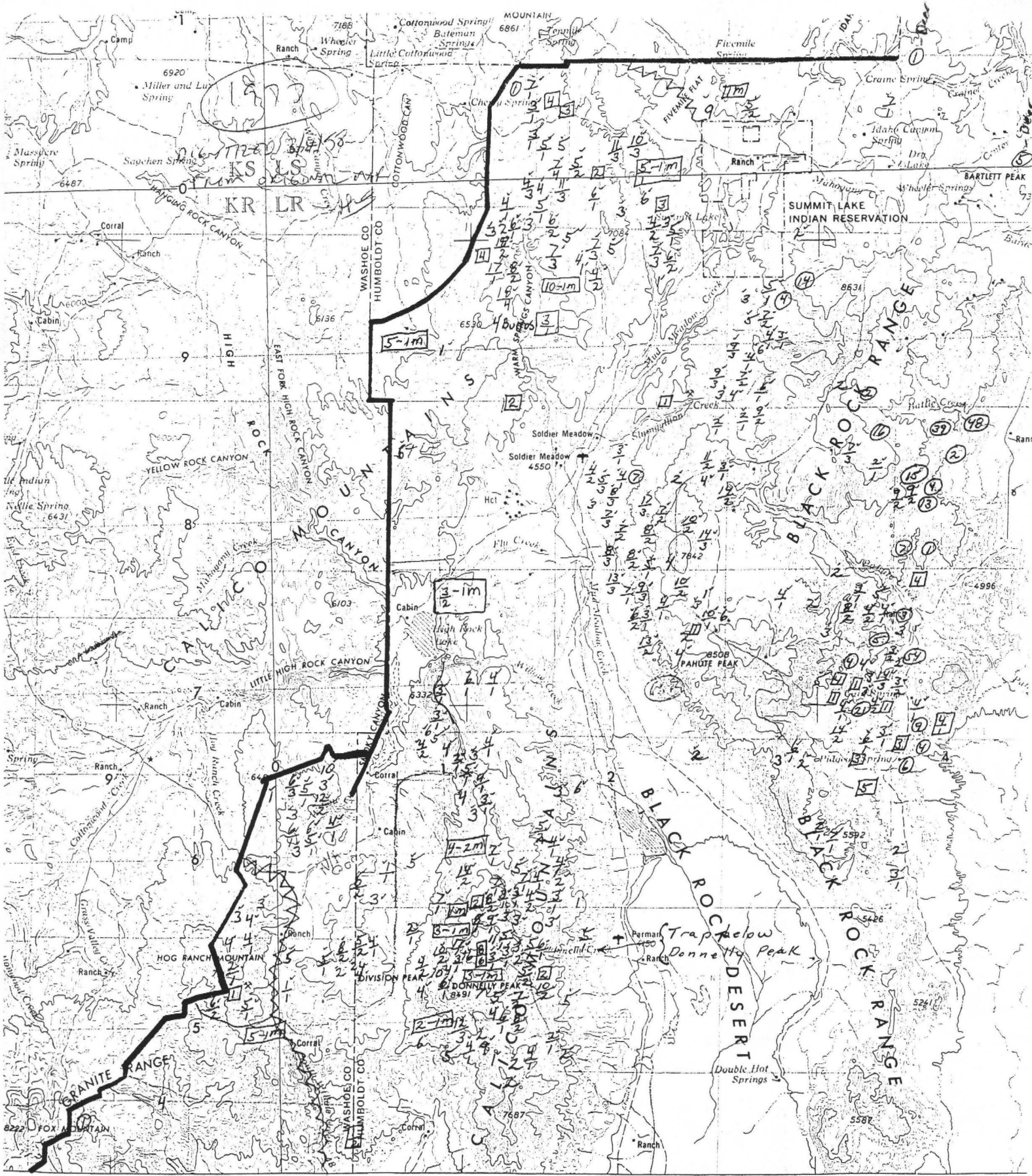


Est. "77"

WILD HORSE INVENTORY

Date (1977)	Area	Flight Hours	Horses		Mules	Burros	
			Adults	Colts		Adults	Colts
	<u>Bell 47G3B1 Helicopter:</u>						
4/4, 5	Black Rock Range ✓	14.6	508	107			
4/6, 7	Humboldt Range ✓	12.3	432	68		2	
4/8, 11, 12	East Range ✓	19.2	903	190	2	2	
4/13	Buffalo Hills* ✓	5.6	865	23			
4/14	Blue Wing Mountains* ✓	5.6	39	4		24	2
	Fox Range * ✓		468	15		1	
		57.3					
	<u>Piper PA-18 Super Cub:</u>						
4/22	Antelope Range ✓	3.7	171	25	1		
	Kamma Mountains ✓		42	9		1	
4/28	Seven Troughs Range ✓	3.5	150	29		30	2
4/28 & 6/13	West Humboldt Range ✓	3.3	153	28			
4/29	The Lava Beds ✓	4.5	553	79		19	
6/1	Calico Mountains; NW of Soldier Meadows ✓	4.5	260	55		4	
6/2	Granite Range ✓	3.7	82	16			
6/3	Calico Mountains ✓	5.7	537	79			
6/8	Truckee Range ✓	4.0	46	6			
	Selenite Range	2.5	4			6	
6/9	North Finger of Lake Range ✓	1.0	15				
6/9, 10	Shawave Mountains ✓	6.0	290	72			
6/10	Nightingale Mountains ✓	4.5	172	39			
6/13	Stillwater Range ✓	2.0	20	5			
	Sou Hills ✓	1.0	0	0			
6/14	Sonoma Range ✓	3.7	147	23			
	Edna & Buffalo Mountains ✓	2.0	0	0			
6/15, 16	Trinity Range ✓	10.7	153	26			
6/20	Tobin Range ✓	5.5	17	1			
	Agusta Mountains ✓		51	12			
	TOTALS		6,078	911	3	89	4

○ = Deer  
 □ = Antelope





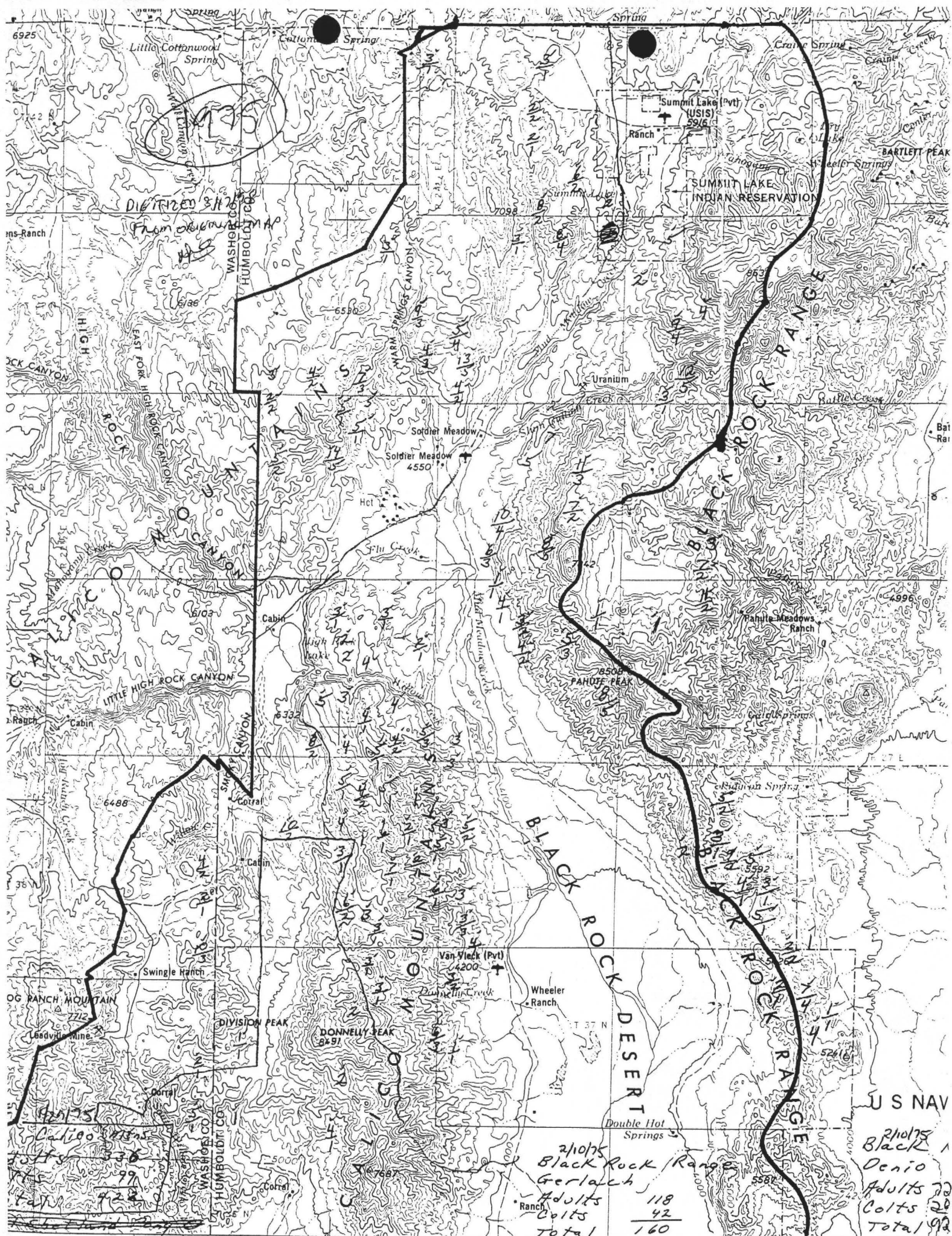
2-12-75

WILD HORSE CENSUS

Bell 47G3B2

<u>Date</u>	<u>Observer</u>	<u>Area</u>	<u>Station</u>		<u>Time Necessary to Complete Census</u>	
			<u>From</u>	<u>To</u>	<u>Hours</u>	<u>Minutes</u>
1/28/75	Les Boni Allen Spalinger	Buffalo Hills	Gerlach	Gerlach	5	27
1/29/75	Les Boni Allen Spalinger	Calico Mountains	Gerlach	Gerlach	8	52
2/10/75	Les Boni	Black Rock Range	Winnemucca	Gerlach	5	53
2/11/75	Les Boni	The Lava Beds	Gerlach	Winnemucca	6	27
2/12/75	Earl McKinney	East Range	Winnemucca	Winnemucca	6	40
12/13/74	Earl McKinney	East Range Sonoma Range	Winnemucca	Winnemucca	2 3	32 38

<u>Area</u>	<u>Adults</u>	<u>Colts</u>	<u>Total</u>	<u>Colt Cron %</u>
Buffalo Hills	408	174	582	30
Calico Mtns.	337	99	423	23
Black Rock Range	190	62	252	25
The Lava Beds				
Horses	351	145	496	29
Burros	16	5	21	24
East Range	465	109	574	19
Rose Creek to				
Dun Glen	211	64	275	23
Sonoma Range	84	6	90	7



DIGITIZED FROM ORIGINAL MAP  
 HAS

21075  
 Gerlach  
 36  
 99  
 728

21075	
Black Rock Range	
Gerlach	
Adults	118
Colts	42
Total	160

U S NAV  
 21075  
 Black  
 Denio  
 Adults 70  
 Colts 20  
 Total 90

11-13-74

Horse Inventory  
 Conducted 9-15 - 11-13-74 With  
 A Piper Super Cub

Date	Area	Adults	Colts	Total	Colt Crn %
9-5-74	West Harbaldt Range	59	5	64	8
	Harbaldt Range	168	23	191	14
9-8-74	East Range (East Side)	174	42		
9-10-74	East Range (East Side)	2275	56		
	Total	447	93	540	22
	* 2 Shetland Ponies				
	Burros	16	3	19	19
9-11-74	Seneca Range	151	17	168	11
9-12-74	Tobin Range	32	4	36	13
9-17-74	Stillwater Range	10	2	12	20
	Sea Hills	50	4	54	15
	Buffalo Mountain, Linn Mountain and North Peak of Little Mountain	0	0	0	--
9-18-74	Antelope Range, Crown Mountains and North end Trinity Range	213	47	260	22
	Burros	6	0	6	0
9-19-74	Seven Trenches Range	54	9	63	27
	Bluewing Mountains	122	39	160	31
10-2-74	The Lava Beds	596	119	715	50
	Burros (2 pintos)	14	6	20	43
10-3-74	Buffalo Hills	449	116	565	26
	53 adults and 16 colts were observed on the west side of the Susanville fence. Not included in total.				
10-7-74	Black Rock Range	258	57	315	22
	<i>387</i>	<i>77</i>	<i>464</i>	<i>34</i>	<i>30%</i>
10-8-74	Calico Mountains	363	93	476	34
	Burros (2 pintos)	10	0	10	0

Horse Inventory  
 Conducted 9-15 - 11-13-74 With  
 A Piper Super Cub

(Continued)

Date	Area	Adults	Colts	Total	Colt Crn %
10-9-74	Small portion of the west side of the Calico Mountains	105	16	121	
	Total - Calico Mtns.	485	109	594	22
	29 adults and 4 colts were observed on the west side of the Susanville fence. Not included in total.				
	Granite Range	59	7	66	18
	7 adults and 1 colt were observed on the west side of the Susanville fence. Not included in total.				
	North Finger of Lake Range	69	14	83	20
10-10-74	Fox Range	299	75	374	23
	23 adults and 6 colts were observed on the Indian Reservation; however, the fence is down, and their trails clearly indicate that these animals use both MRL and reservation land. These were included in total.				
10-15-74	Selenite Range	4	0	4	0
	Nightingale Mountains	54	18	72	53
10-16-74	Truckee Range	52	12	64	28
	23 adults and 5 colts were observed on the Indian Reservation; however, the fence is down, and the trails clearly indicate that they pass through the reservation for water from NM. These were included in total.				
	NE portion of Shawave Mountains	19	3	22	
10-17-74	Balance Shawave Mtns.	145	38	183	
	Total	153	41	194	27
11-6-74	Balance Trinity Range	0	0	0	--
11-13-74	Hot Springs Mountains	0	0	0	--
	Totals				
	Horses	5527	815	6342	
	Burros	46	9	55	

SCHEDULE  
HUNTER CENSUS  
*Spec Super Cub*

Date	BLM Officer	Area	Station		Time Necessary to Complete Census	
			From	To	Hours	Minutes
9/5/74	Les Boni	Humboldt Range West Humboldt Range	Winnemucca	Winnemucca	5	15
9/6/74	Les Boni	East Range	Winnemucca	Winnemucca	4	25
9/10/74	Les Boni	East Range Stillwater Range	Winnemucca	Winnemucca	5	55
9/11/74	Earl McKinney	Sonoma Range	Winnemucca	Winnemucca	4	40
9/12/74	Earl McKinney	Tobin Range Agusta Mountains	Winnemucca	Winnemucca	6	--
9/17/74	Les Boni	Edna Mountain Buffalo Mountain	Winnemucca	Winnemucca	5	30
9/18/74	Bob Cordell	Antelope Range Majuba Mountain Kansaa Mountains N. End Trinity Range	Winnemucca	Winnemucca	5	50
9/19/74	Bob Cordell	Seven Troughs Range Bluewing Mountains	Winnemucca	Winnemucca	4	45
10/2/74	Les Boni	The Lava Beds	Winnemucca	Winnemucca	5	15
10/3/74	Earl McKinney	Buffalo Hills	Winnemucca	Winnemucca	8	--
10/7/74	Earl McKinney	Granite Range North Finger of Lake Range	Winnemucca	Gerlach	6	--

SCHEDULE  
HUNTER CENSUS

Date	BLM Officer	Area	Station		Time Necessary to Complete Census	
			From	To	Hours	Minutes
10/8/74	Earl McKinney	Calico Mountains Sawpit Lake	Gerlach	Gerlach	7	50
10/9/74	Earl McKinney	Black Rock Range	Gerlach	Gerlach	6	15
10/10/74	Earl McKinney	Fox Range	Gerlach	Winnemucca	5	--
10/15/74	Les Boni	Selenite Range Nightingale Mts.	Winnemucca	Gerlach	6	10
10/16/74	Les Boni	Th. Portion of Shingave Mountains Trucker Range	Gerlach	Gerlach	7	45
10/17/74	Les Boni	Shingave Mountains	Gerlach	Winnemucca	4	--
11/6/74	Les Boni	Trinity Range	Winnemucca	Winnemucca	5	20
<u>11/13/74</u>	Les Boni	Hot Springs Mountains	Winnemucca	Winnemucca	5	40



