

1/21/98



United States Department of the Interior

BUREAU OF LAND MANAGEMENT

Winnemucca Field Office

5100 East Winnemucca Boulevard

Winnemucca, Nevada 89445

702-623-1500

In Reply Refer To:

(NV-022.10)

4130

January 21, 1998

Dear Interested Public:

We have received grazing applications from Agri Beef and Mike Burke for Temporary Non-renewable extension in the Clear Creek and Goldbanks Allotments respectively. The numbers of livestock and season of use applied for are:

<u>Operator</u>	<u>Allotment</u>	<u>Livestock Numbers</u>	<u>Season</u>	<u>AUMs</u>
Agri Beef	Clear Creek	1200 Sheep	2/1 - 3/31/98	326
Mike Burke	Goldbanks	200 Cows	2/1 - 2/28/98	191

The normal use periods for the allotments are:

Clear Creek	Varies*
Goldbanks	11/20 - 1/31

* Numbers of sheep and dates may vary within the adjudicated season of use per the annual application as authorized by the authorized officer. Prior to authorizing grazing, the areas will be toured with a representative from Agri Beef and the BLM two weeks prior to turnout.

The areas were field checked on January 15, 1998 (see attached maps). For the Clear Creek Allotment the sheep will use the flats and low hills north and south of Sheep Ranch Creek. Dominate vegetation is shadscale, bud sage, Wyoming sage, squirreltail, bluegrass, and cheatgrass. Other then a few trespass cows this area has had no use for the past three years. The operator wanted to take advantage of the increased watering sites from the recent and expected storms.

The additional use in the Goldbanks Allotment will be in the Winter Pasture. Dominate vegetation is Wyoming sage, shadscale, Basin Wildrye, bluegrass, and cheatgrass. Utilization levels ranged from light, about 1+ miles from water to moderate within 300 yards of the windmill.

A stipulation on the Agri Beef grazing authorization is the use area will be checked at the end of February to ensure utilization levels are acceptable. The stipulations for Mike Burke is no salting within a ¼ mile of the Spaulding II fire and livestock will be herded away from the Spaulding II fire.

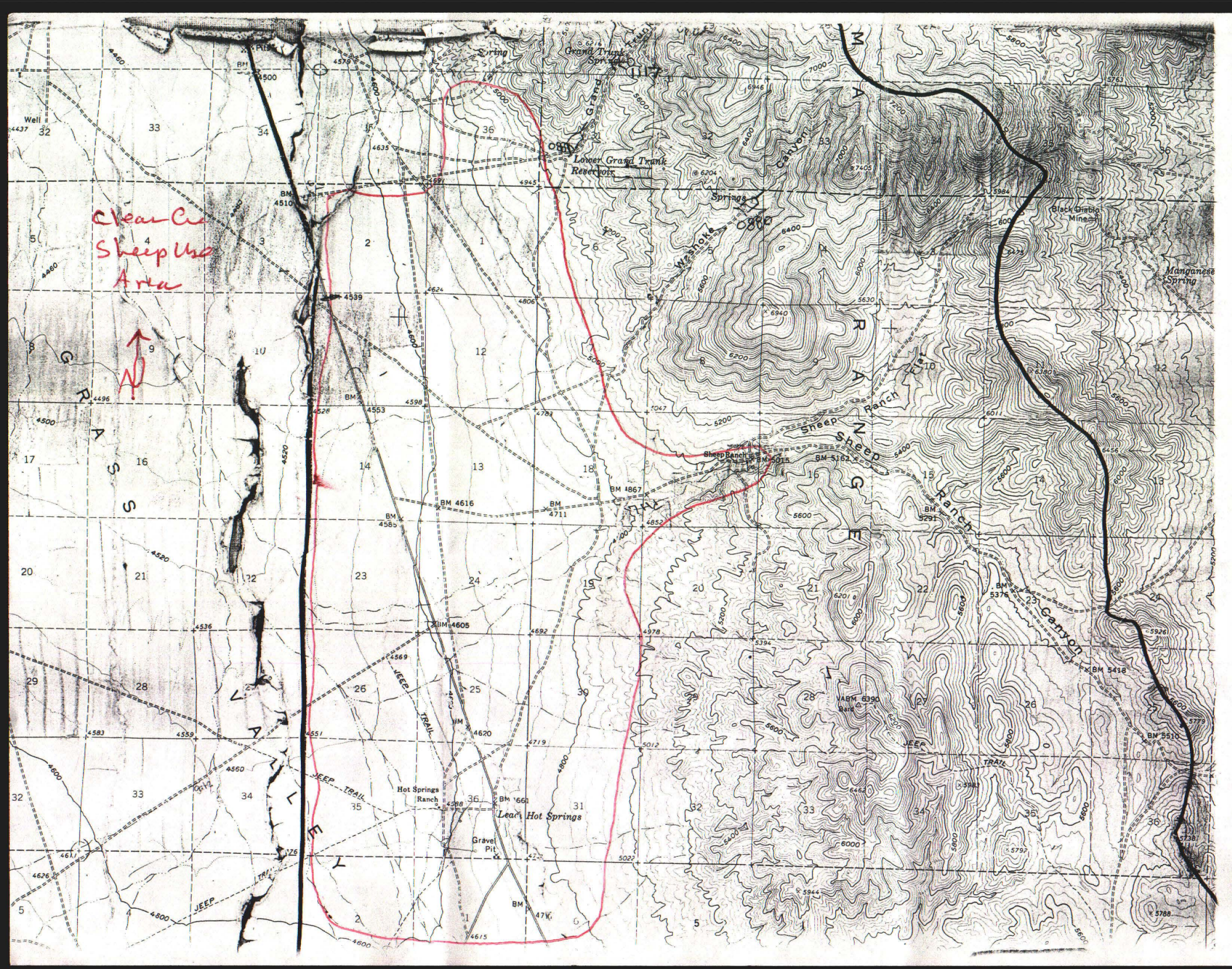
If you have any questions or comments, please contact Rich Adams by January 30, 1998. His phone number is (702) 623-1500.

Sincerely yours,

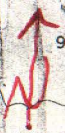
Richard E Adams, Acting
Colin P. Christensen
ADM, Winnemucca

Attachments - Map of Use Areas

CC: Commission for the Preservation of Wild Horses
Craig Downer
Nevada Division of Wildlife
NRDC
Resource Concepts, Inc.
Intermountain Range Consultatns
Sierra Club-Toiyabe Chapter
Mike Burke
Desert Bighorn Council
John Phillips



Clear Cut
Sheep Use
Area



Lower Grand Trunk
Reservoir

Sheep Ranch

Hot Springs
Ranch

Lead Hot Springs

Manganese
Spring

Canyon

Well
4437
32

S
A
S
16

29

32

5

BM 4510

4539

BM 4553

BM 4585

4536

4539

4617

4800

BM 4596

BM 4616

BM 4605

4569

4551

4800

4624

BM 4711

4692

4569

4551

4800

4783

BM 4867

4692

4569

4551

4800

4806

BM 4711

4692

4569

4551

4800

5047

BM 4867

4692

4569

4551

4800

5200

BM 4867

4692

4569

4551

4800

6200

BM 4867

4692

4569

4551

4800

6940

BM 4867

4692

4569

4551

4800

6200

BM 4867

4692

4569

4551

4800

6200

BM 4867

4692

4569

4551

4800

6200

BM 4867

4692

4569

4551

4800

6200

BM 4867

4692

4569

4551

4800

6200

BM 4867

4692

4569

4551

4800

6200

BM 4867

4692

4569

4551

4800

6200

BM 4867

4692

4569

4551

4800

6200

BM 4867

4692

4569

4551

4800



T. 31 N.
4493
35
4491
4490
4489
4488
4487
4486
2100000
FEET
T. 31 N.
T. 30 N.
4484
40' 30"
4483000m N.
4481

1218

1219

4228

4233

Gold Bank

1068

1068

396

Spring

Mud Springs Ranch

Grass Valley

DEVILS ELBOW

GOLDBANKS

493