

February 26, 2002

**SPANISH RANCH/SQUAW VALLEY ALLOTMENT 2002
PROJECTION OF ACTIONS**

<u>Action:</u>	<u>Estimated Date:</u>
Discuss Proposed Grazing Systems on Spanish Ranch and Squaw Valley Allotments with Barrick, Ellison Ranching Co., Horse groups, USFWS, and NDOW.	2/27/02 & 3/1/02
Last day for input on grazing systems, interim, and wildhorse issues by interested parties.	3/15/02
BLM develops Grazing System proposed in PMUD and presents to Barrick, Ellison Ranching Co., Horse groups, USFWS, and NDOW.	3/25-29/02
BLM completes MASR and PMUD, has "inhouse" comments and discussion about final proposal in PMUD.	4/1/02
BLM initiates formal section 7 consultation with USFWS.	4/15/02
BLM sends MASR/PMUD out for 15 day protest period. Issuance dependent upon receipt of USFWS Biological Opinion.	5/15/02
BLM issues FMUD in full force and effect, out for 30 day appeal period.	5/31/02

*capt July - Aug.
Squaw Valley
grazing set
by mid March -*

PRELIMINARY GRAZING RECOMMENDATIONS FOR SQUAW VALLEY ALLOTMENT

(refer to the attached GIS map for field locations)

FIELD	ACRES	Estimated AUMs	KEY ISSUES	POSSIBLE MANAGEMENT STRATEGIES
Horseshoe	27,101	2,112	Overuse of Kochia during hot and late season (mid July-Oct.) leaving nothing for wintering deer	Early (off by mid July) Utilization restrictions (no more than 50% use) Rotate use (limit hot/late use in some years)
Indian Springs	15,973	1,432	same as above	Same as above
Horseshoe Seeding	4,474	1,720*	none	Flexible
Midas Seeding	1,189	777*	none	Flexible
Rock Creek Seeding	1,358	821*	none	Flexible
Upper Clover Seeding	668	97	none	Flexible
Rock Creek Riparian	35,964	2,404	-Riparian -Middle Rock Creek Gorge -Forage Kochia for deer	Riparian -Early use (off by 6/15) annually (uplands?) Hot (July-Oct), early, early, rest Hot, early, early, fall (after Sept. 15) Hot, rest, rest Late fall (after Oct. 15) Winter (Nov. 1-Mar. 15) Upland water development Limited gap fencing/riding/utilization restrictions Kochia - Any riparian friendly system identified above Without riparian system: Early off (mid July) Utilization restrictions (no more than 50%) Rotate use (limit hot/late use in some years)
Willow Creek Reservoir Field	63,754	7,575	-Some (but limited?) riparian issues-Lower Willow Creek -Overuse of bitterbrush -Sage Grouse nesting cover ≈ 3 springs in poor condition -Cultural area protection	Riparian exclusion (corridor) fencing along Lower Willow Creek Fence and develop springs Fence cultural areas Limit use on bitterbrush (25%) and upland grasses (50%) Deferred rotation (minimize additional fencing)

FIELD	ACRES	Estimated AUMs	KEY ISSUES	POSSIBLE MANAGEMENT STRATEGIES
Upper Willow Creek Enhancement Area	12,300	?	See SEIS Mitigation Plan	See SEIS Mitigation Plan
Trout Creek	48,354	5,705	LCT Riparian - streams, springs, aspen Crucial deer summer range Forage diversity	-Rest, Early (6/30 off), late (after Sept. 15-Oct. 15 depending on climatic conditions), hot (July- Oct) -Early (7/10 off); rest, early, rest -Early (6/30 off) annually (may have concerns with uplands)
Soldier Field	19,965	1,602	Riparian - Streams, springs, aspen Sage Grouse nesting, brood rearing Horses	Early use (off by 6/15) annually (may have upland concerns) Rest, early, early, fall Rest, early, fall, hot Rest, early, hot Rest, rest, hot Early, rest, early Late fall (after Sept. 15-Oct. 15 depending on climatic conditions) Fall, early, fall, early Winter
Frazer Creek (including Spanish Ranch piece)	28,731	2,458	LCT Riparian - streams, springs Sage grouse nesting and brood rearing Horses	Early use (off by 6/15) annually (possible upland issues) Early use, rest Rest, early, late fall (after Oct. 15) Rest, late fall Winter Early, early, rest
Frazer Creek (without Spanish Ranch piece)	20,443	1,748	Same as above	Same as above
Lower Squaw Creek	15,846	1,190	Minimal	Flexible
Upper Rock Creek Enclosure			LCT Riparian Stream	Limit holding of domestic horses to 2-3 horses for no more than 5 days in prior to early July

*Source: Draft Squaw Valley Allotment Evaluation

Sheep Grazing - Add the following restrictions:

Use alternate trailing routes in different years depending on resource impacts

No bedding on riparian areas (streams, aspen stands, springs)

Increased BLM monitoring commitment

PRELIMINARY GRAZING RECOMMENDATIONS FOR SQUAW VALLEY ALLOTMENT

(refer to the attached GIS map for field locations)

FIELD	ACRES	Estimated AUMs ¹	KEY ISSUES	POSSIBLE MANAGEMENT STRATEGIES
Horseshoe	27,101	2,258	Overuse of Kochia during hot and late season (mid July-Oct.) leaving nothing for wintering deer	Early (off by mid July) Utilization restrictions (no more than 50% use) Rotate use (limit hot/late use in some years)
Indian Springs	15,973	1,331	same as above	Same as above
Horseshoe Seeding	4,474	1,720*	none	Flexible
Midas Seeding	1,189	777*	none	Flexible
Rock Creek Seeding	1,358	821*	none	Flexible
Upper Clover Seeding	668	56	none	Flexible
Rock Creek Riparian	35,964	2,997	-Riparian -Middle Rock Creek Gorge -Forage Kochia for deer	Riparian -Early use (off by 6/15) annually (uplands?) Hot (July-Oct), early, early, rest Hot, early, early, fall (after Sept. 15) Hot, rest, rest Late fall (after Oct. 15) Winter (Nov. 1-Mar. 15) Upland water development Limited gap fencing/riding/utilization restrictions Kochia - Any riparian friendly system identified above Without riparian system: Early off (mid July) Utilization restrictions (no more than 50%) Rotate use (limit hot/late use in some years)
Willow Creek Reservoir Field	63,754	5,313	-Some (but limited?) riparian issues-Lower Willow Creek -Overuse of bitterbrush -Sage Grouse nesting cover ≈3 springs in poor condition -Cultural area protection	Riparian exclusion (corridor) fencing along Lower Willow Creek Fence and develop springs Fence cultural areas Limit use on bitterbrush (25%) and upland grasses (50%) Deferred rotation (minimize additional fencing)

FIELD	ACRES	Estimated AUMs ¹	KEY ISSUES	POSSIBLE MANAGEMENT STRATEGIES
Upper Willow Creek Enhancement Area	12,300	1,088	See SEIS Mitigation Plan	See SEIS Mitigation Plan
Trout Creek	48,354	4,030	LCT Riparian - streams, springs, aspen Crucial deer summer range Forage diversity	-Rest, Early (6/30 off), late (after Sept. 15-Oct. 15 depending on climatic conditions), hot (July- Oct) -Early (7/10 off); rest, early, rest -Early (6/30 off) annually (may have concerns with uplands)
Soldier Field	19,965	1,664	Riparian - Streams, springs, aspen Sage Grouse nesting, brood rearing Horses	Early use (off by 6/15) annually (may have upland concerns) Rest, early, early, fall Rest, early, fall, hot Rest, early, hot Rest, rest, hot Early, rest, early Late fall (after Sept. 15-Oct. 15 depending on climatic conditions) Fall, early, fall, early Winter
Frazer Creek (including Spanish Ranch piece)	28,731	2,395	LCT Riparian - streams, springs Sage grouse nesting and brood rearing Horses	Early use (off by 6/15) annually (possible upland issues) Early use, rest Rest, early, late fall (after Oct. 15) Rest, late fall Winter Early, early, rest
Frazer Creek (without Spanish Ranch piece)	20,443	1,704	Same as above	Same as above
Lower Squaw Creek	15,846	1,321	Minimal	Flexible
Upper Rock Creek Exclosure			LCT Riparian Stream	Limit holding of domestic horses to 2-3 horses for no more than 5 days in prior to early July

¹Rough approximation of AUMs assuming 12 ac/AUM.(note: this does not take into account utilization at key areas). Is not final AUM calculations.

*Source: Draft Squaw Valley Allotment Evaluation

Sheep Grazing -Add the following restrictions:

Use alternate trailing routes in different years depending on resource impacts

No bedding on riparian areas (streams, aspen stands, springs)

Increased BLM monitoring commitment

PRELIMINARY GRAZING RECOMMENDATIONS FOR SPANISH RANCH ALLOTMENT

(refer to the attached GIS map for field locations)

OPTION 1

FIELD	ACRES	ESTIMATED AUMs ¹	KEY ISSUES	POSSIBLE MANAGEMENT STRATEGIES
Burner Hills	44,001	4,447	Seeps, springs, sage grouse Upland ecological conditions?? Horses	Early use (off by June 30 th) Address uplands?? Reduce horses Build let down allotment boundary fence to allow for horse movement
<i>Frazer Cr. Riparian</i>	<i>8,288</i>	<i>691</i>	<i>Same as above</i>	<i>Same as above</i>
Winters Creek	18,024	2,057	Redband Trout (Winters Creek) Horses	Early use (off by June 30 th) Remove horses-set horse use to zero Rebuild, reinforce fence after horse gather
Red Cow	36,369	5,519	Redband Trout (Red Cow, Fourmile Creeks)	Early use (off by 6/30) annually Hot (July-Oct), early, early, rest Hot, early, early, fall (after Sept. 15) Hot, rest, rest Late fall (after Oct. 15)
Big Cottonwood Upland	18,579	2,611	unknown	Flexible
Big Cottonwood Canyon Riparian	3,226	414	Redband Trout (Big Ctoonwood Canyon Creek)	Early use (clean and close gates by 7/5) Fall gather (After 10/1) Limited trailing
Cottonwood Upland	22,352	2,463	Cottonwood Creek (intermittent?)	Flexible
Cottonwood Private Aspen	5,031	862	Aspen Deer Summer Range	Late fall gather (after 10/1) Early off (7/30) *Note - field mostly private

FIELD	ACRES	ESTIMATED AUMs ¹	KEY ISSUES	POSSIBLE MANAGEMENT STRATEGIES
Sixmile	5,215	522	Sixmile Creek (Part of the BLM portion - Functional At Risk - trend not apparent)	Early use (off by 7/15) Hot (July-Nov), early, early, rest Hot, early, early, fall (after Sept. 15) Hot, rest, rest Late fall (after Oct. 1)
Cornucopia	15,679	2,106	Deer Winter Range Owyhee River	Early off (off by 6/30) Bitterbrush utilization restrictions Combination of hot/fall/early/rest so as long as early use or rest occur in more years than hot or fall use
Owyhee River Riparian	4,439	419	Owyhee River	See above
Hot Creek	5,913	797	Unknown - possible concern with BLM part of Hot Creek	

OPTION 2

FIELD	ACRES	ESTIMATED AUMs ¹	KEY ISSUES	POSSIBLE MANAGEMENT STRATEGIES
Burner Hills	44,001	4,447	Seeps, springs, sage grouse Upland ecological conditions?? Horses	Early use (off by June 30 th) Address uplands?? Reduce horses Build let down allotment boundary fence to allow for horse movement
<i>Frazer Cr. Riparian</i>	<i>8,288</i>	<i>691</i>	<i>Same as above</i>	<i>Same as above</i>
Winters Creek	18,024	2,057	Redband Trout (Winters Creek) Horses	Early use (off by June 30 th) Remove horses-set horse use to zero Rebuild, reinforce fence after horse gather
Cornucopia	15,679	2,106	Deer Winter Range Owyhee River	Early off (off by 6/30) Bitterbrush utilization restrictions Combination of hot/fall/early/rest so as long as early use or rest occur in more years than hot or fall use
Red Cow	36,369	5,519	Redband Trout (Red Cow, Fourmile Creeks)	Early use (off by 6/30) annually Hot (July-Oct), early, early, rest Hot, early, early, fall (after Sept. 15) Hot, rest, rest Late fall (after Oct. 15)
Big Cottonwood Upland and Cottonwood Pvt Aspen Pastures (as one)	23,610	3,473	Aspen Deer Summer Range	Flexible Riparian issues private *Note - Cottonwood Pvt Aspen Pasture mostly private
Big Cottonwood Riparian and Owyhee River Riparian (as one)	7,665	833	Redband Trout (Big Cottonwood Canyon Creek) Owyhee River	Early use (clean and close gates by 7/5) Fall gather (After 10/1) Limited trailing

FIELD	ACRES	ESTIMATED AUMs ¹	KEY ISSUES	POSSIBLE MANAGEMENT STRATEGIES
Cottonwood Upland and Sixmile (as one)	27,567	2,985	Cottonwood Creek (intermittent?) Headwaters Cottonwood Creek Sixmile Creek (Part of the BLM portion - Functional At Risk - trend not apparent)	Flexible Riparian issues private
Hot Creek	5,913	797	Unknown-possible concern with BLM part of Hot Creek	

OPTION 3

FIELD	ACRES	ESTIMATED AUMs ¹	KEY ISSUES	POSSIBLE MANAGEMENT STRATEGIES
Burner Hills	44,001	4,447	Seeps, springs, sage grouse Upland ecological conditions?? Horses	Early use (off by June 30 th) Address uplands?? Reduce horses Build let down allotment boundary fence to allow for horse movement
<i>Frazer Cr. Riparian</i>	<i>8,288</i>	<i>691</i>	<i>Same as above</i>	<i>Same as above</i>
Winters Creek	18,024	2,057	Redband Trout (Winters Creek) Horses	Early use (off by June 30 th) Remove horses-set horse use to zero Rebuild, reinforce fence after horse gather
Red Cow	36,369	5,519	Redband Trout (Red Cow, Fourmile Creeks)	Early use (off by 6/30) annually Hot (July-Oct), early, early, rest Hot, early, early, fall (after Sept. 15) Hot, rest, rest Late fall (after Oct. 15)
Big Cottonwood Upland and Cornucopia (as one)	34,258	4,717	Owyhee River Deer Winter Range	Flexible Riparian issues private
Big Cottonwood Riparian and Owyhee River Riparian (as one)	7,665	833	Redband Trout (Big Cottonwood Canyon Creek) Owyhee River	Early use (clean and close gates by 7/5) Fall gather (After 10/1) Limited trailing
Cottonwood Upland, Cottonwood Pvt. Aspen, and Sixmile (as one)	32,598	3,847	Cottonwood Creek (intermittent?) Headwaters Cottonwood Creek Sixmile Creek (Part of the BLM portion - Functional At Risk - trend not apparent) Aspen Deer Summer Range	Flexible Riparian issues private *Note - Cottonwood Pvt Aspen Pasture mostly private

FIELD	ACRES	ESTIMATED AUMs ¹	KEY ISSUES	POSSIBLE MANAGEMENT STRATEGIES
Hot Creek	5,913	797	Unknown-possible concern with BLM part of Hot Creek	

OPTION 4

FIELD	ACRES	ESTIMATED AUMs ¹	KEY ISSUES	POSSIBLE MANAGEMENT STRATEGIES
Burner Hills	44,001	4,447	Seeps, springs, sage grouse Upland ecological conditions?? Horses	Early use (off by June 30 th) Address uplands?? Reduce horses Build let down allotment boundary fence to allow for horse movement
<i>Frazer Cr. Riparian</i>	<i>8,288</i>	<i>691</i>	<i>Same as above</i>	<i>Same as above</i>
Winters Creek	18,024	2,057	Redband Trout (Winters Creek) Horses	Early use (off by June 30 th) Remove horses-set horse use to zero Rebuild, reinforce fence after horse gather
Red Cow	36,369	5,519	Redband Trout (Red Cow, Fourmile Creeks)	Early use (off by 6/30) annually Hot (July-Oct), early, early, rest Hot, early, early, fall (after Sept. 15) Hot, rest, rest Late fall (after Oct. 15)
Big Cottonwood Upland and Cornucopia (as one)	34,258	4,717	Owyhee River Deer Winter Range	Flexible Riparian issues private
Big Cottonwood Riparian	3,226	414	Redband Trout (Big Cottonwood Canyon Creek)	Early use (clean and close gates by 7/5) Fall gather (After 10/1) Limited trailing
Cottonwood Upland, Cottonwood Pvt. Aspen, Owyhee River Riparian, and Sixmile (as one)	37,037	4,266	Cottonwood Creek (intermittent?) Headwaters Cottonwood Creek Sixmile Creek (Part of the BLM portion - Functional At Risk - trend not apparent) Owyhee River Aspen Deer Summer Range	Flexible Riparian issues private and small public portion *Note - Cottonwood Pvt Aspen Pasture mostly private

FIELD	ACRES	ESTIMATED AUMs ¹	KEY ISSUES	POSSIBLE MANAGEMENT STRATEGIES
Hot Creek	5,913	797	Unknown-possible concern with BLM part of Hot Creek	

¹Based on rangeland adjudication map.

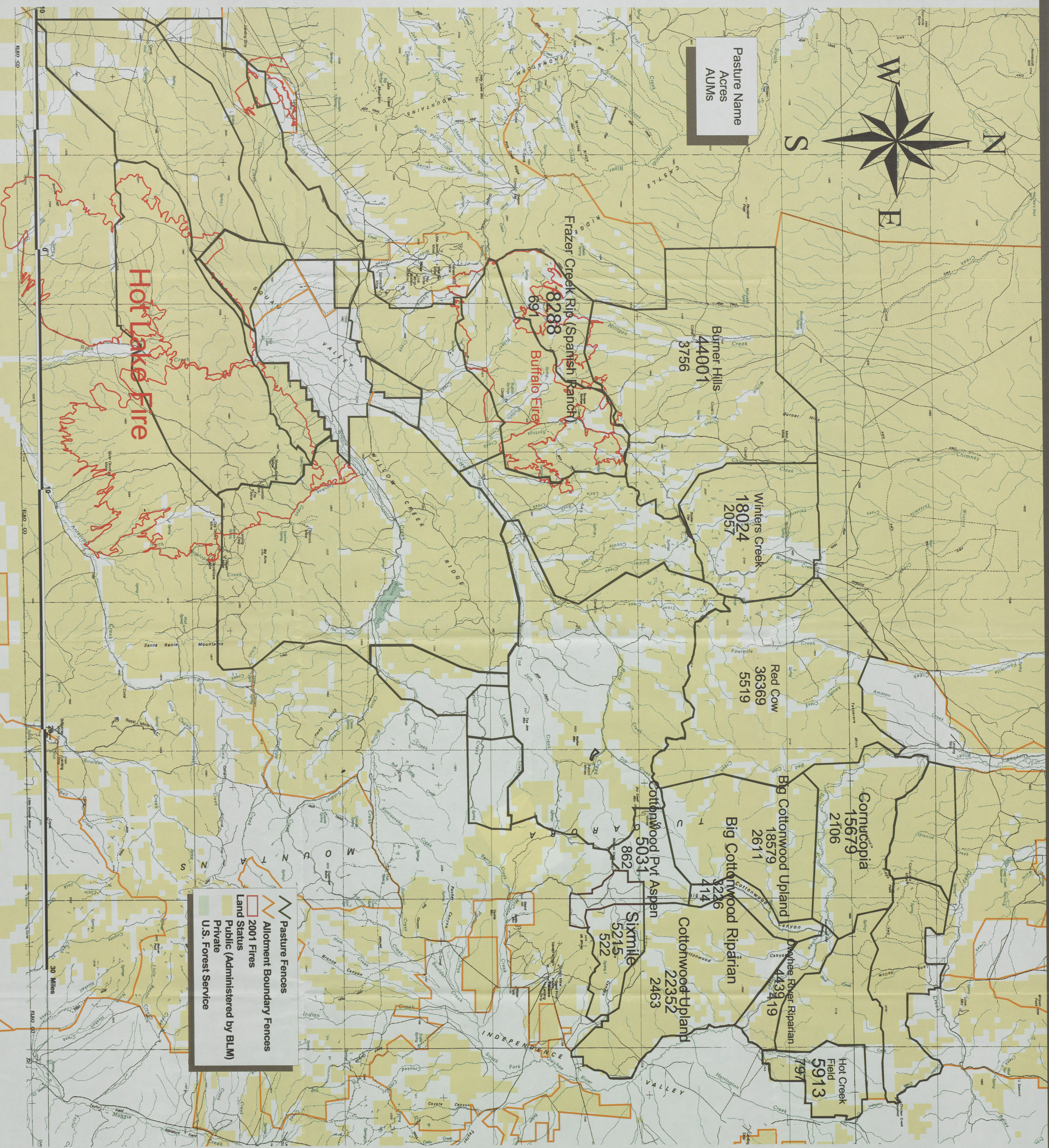
Sheep Grazing -Add the following restrictions:

- Use alternate trailing routes in different years depending on resource impacts
- No bedding on riparian areas (streams, aspen stands, springs)
- Increased BLM monitoring commitment

Wildhorse Herd Management Area

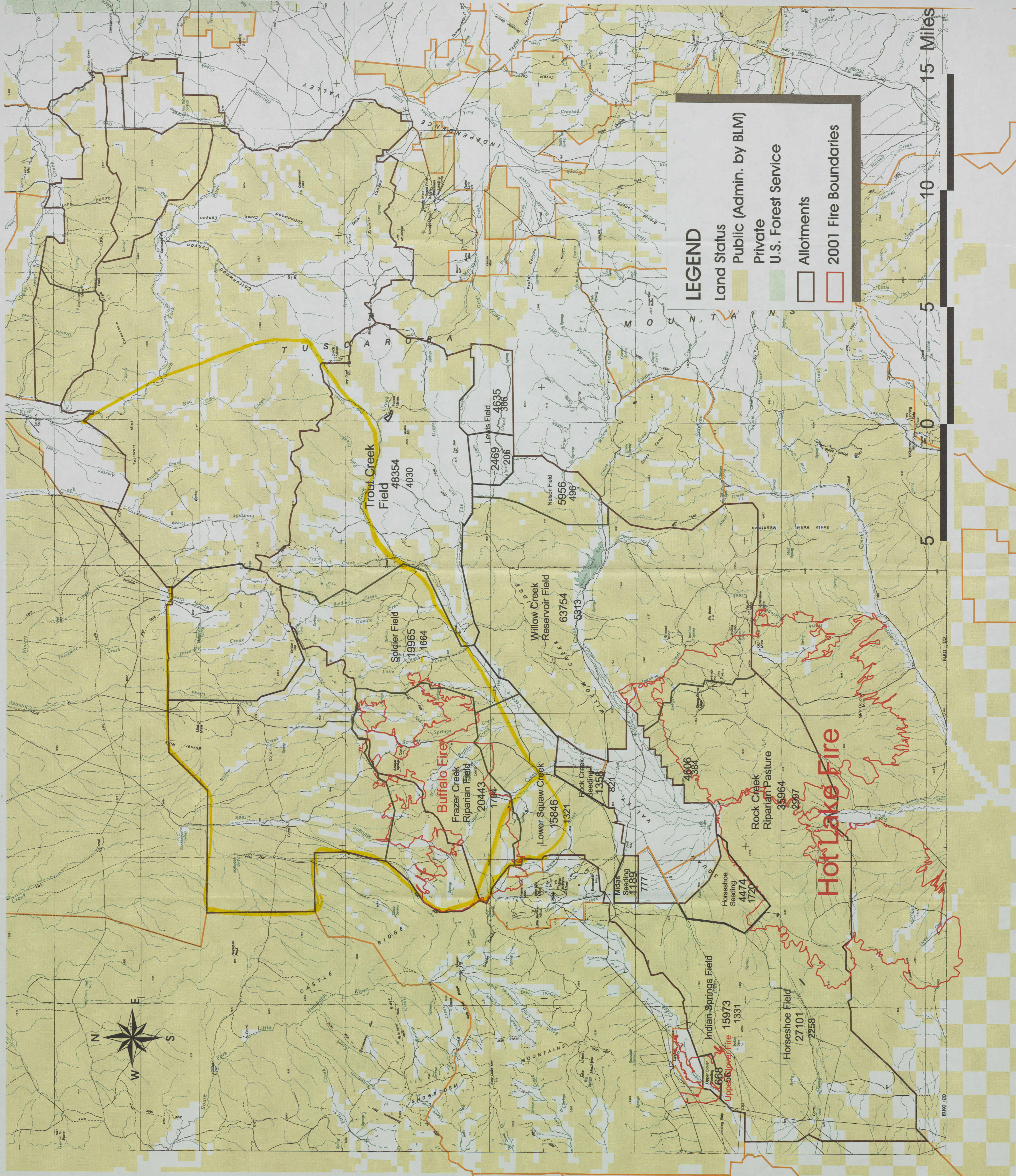
The HMA will be very similar to what the Rock Creek Allotment Evaluation proposed. The Burner hills pasture within the Spanish Ranch Allotment will be in the HMA, which has good wintering range for wildhorses and will have an appropriate AML. Winters Creek Pasture within the Spanish Ranch Allotment will also be in the HMA, but will only have incidental horse use and a AML of 0. If harsh conditions exist to where the wildhorses need to go into Winters Creek Pasture, the fence will be let down in high horse traffic areas. Frazer Creek Riparian Pasture within the Squaw Valley Allotment will also be in the HMA, but will only have incidental horse use and a AML of 0. If harsh conditions exist to where the wildhorses need to go into Frazer Creek Riparian Pasture, the fence will be let down in high horse traffic areas. Soldier Field within the Squaw Valley Allotment will be in the HMA, which has good summer range for wildhorses and will have an appropriate AML. The Allotment Boundary fence between Frazer Creek Riparian Pasture and Winters Creek Pasture will be let down for wildhorse movement when livestock are not in these 2 pastures.

Spanish Ranch Proposed Pastures



"NO WARRANTY IS MADE BY THE BUREAU OF LAND MANAGEMENT AS TO THE ACCURACY, RELIABILITY, OR COMPLETENESS OF THESE DATA FOR INDIVIDUAL USE OR AGGREGATE USE WITH OTHER DATA."





Andrae and Squaw Valley Allotment Detail

UNITED STATES
DEPARTMENT OF THE INTERIOR
BUREAU OF LAND MANAGEMENT
ELKO FIELD OFFICE



NO WARRANTY IS MADE BY THE BUREAU OF LAND MANAGEMENT AS TO THE ACCURACY, RELIABILITY, OR COMPLETENESS OF THESE DATA FOR INDIVIDUAL USE OR AGGREGATE USE WITH OTHER DATA.