

com
7-27-94

Buffalo creek

BRENT ESPIL FENCING PROPOSAL (JULY 27, 1994)

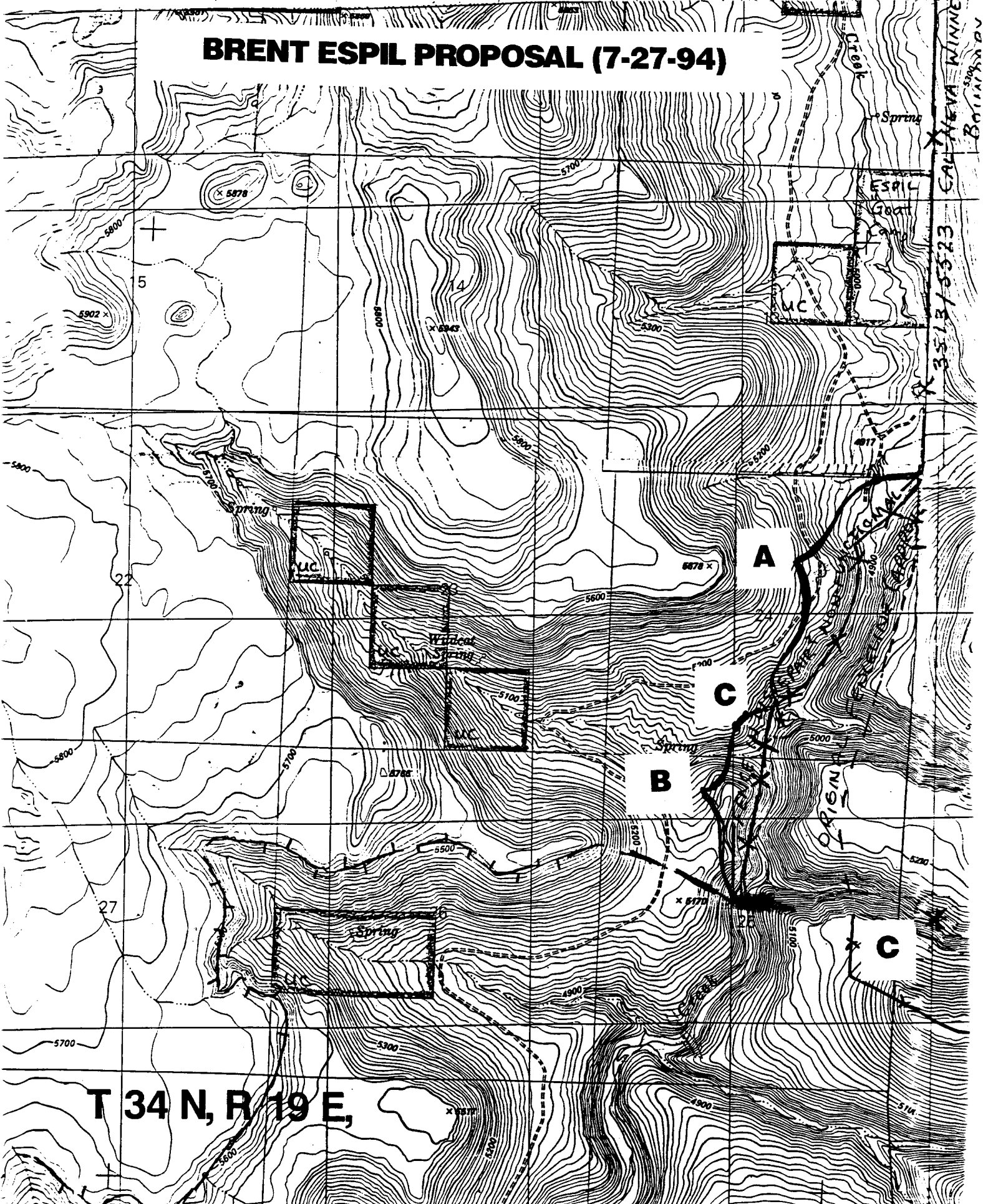
Repair segment A on map 2, abandon and remove segment B, and construct two short gap fences with gates at points C (as identified in the circles).

Requirements to open and close the gates would be same as the BLM proposal.

BUFFALO FROG CREEK FENCE PROPOSALS

com

BRENT ESPIL PROPOSAL (7-27-94)



CAL MEVA WINNE
BORING
3513/5323

T 34 N, R 19 E,

Com

BLM FROG/BUFFALO CREEK FENCE PROPOSAL

II. Proposed Action.

A. Repair present gates and fences and implement the following stipulations:

1. When the Jacksons turn out on April 1st in Buffalo Hills Allotment, they will close gate 3 (map reference # 3) at the base of Wrangler Canyon. This gate prevents Jackson cattle drifting down Buffalo Creek Canyon. When they leave Buffalo Hills, they will be responsible for opening gate 3. The gate must be opened by November 1st each year. Gate 3 will remain open on non-use years unless Espil has a problem with cattle drifting up Buffalo Creek Canyon, in which event he will close the gate. He will then be responsible for reopening it by November 1st.
2. Current gates 1 and 2 (map references 1 & 2) will be closed by Espil on alternate years when he enters the north pasture of Twin Peaks Allotment and reopened when he leaves every year, or no later than November 1st. Espil's season of use alternates yearly between March 1 to December 31 and July 1 to December 31. However, due to weather conditions, he usually turns out after March 31. November 1 will always be the cut-off date for gate openings. On years when the Jacksons precede Espil into the area, they will close gates 1, 2, and 3.

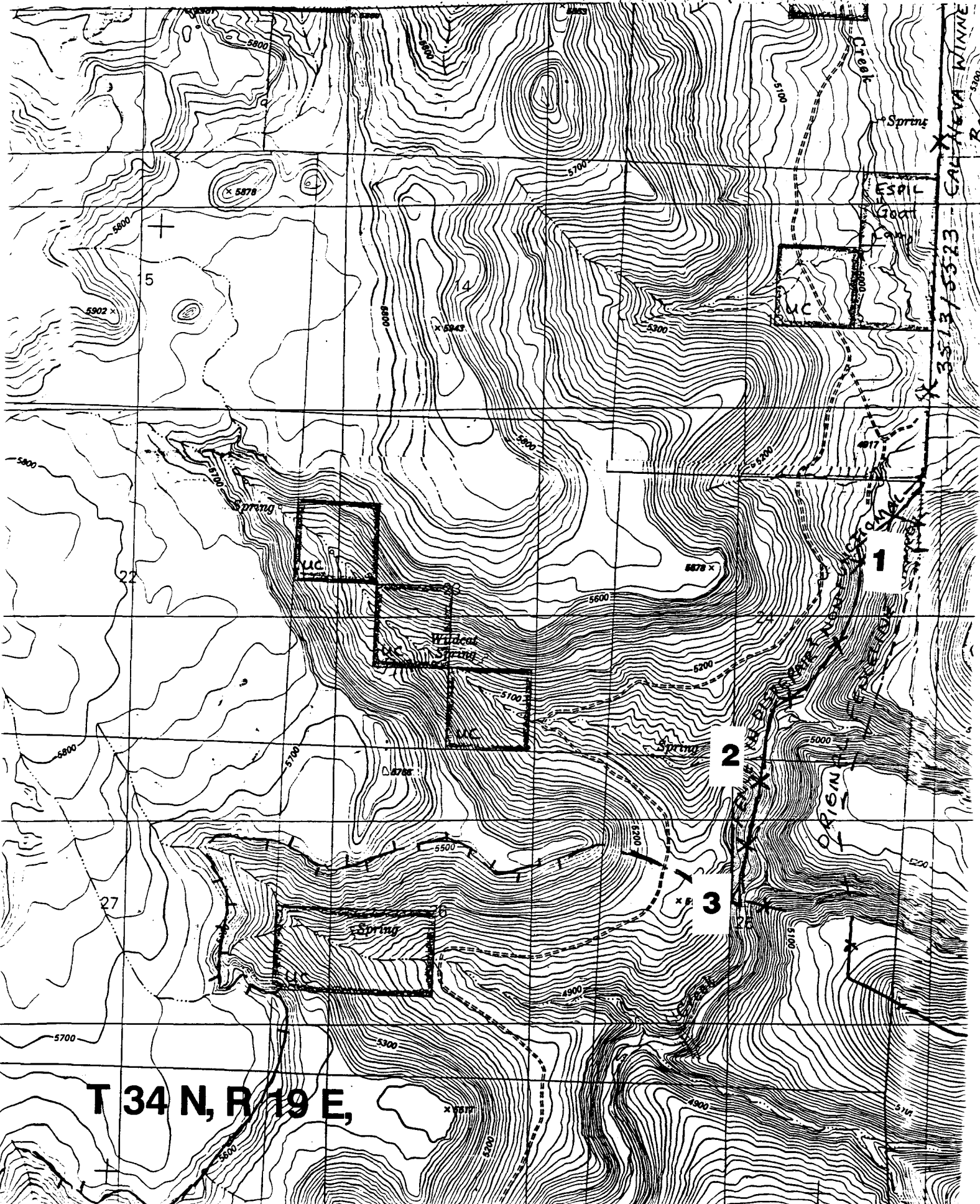
Espil will open the gates when he leaves the north pasture or by November 1, whichever is earliest.

3. When the gates are left open for the winter, the gates will be wired open or removed to prevent their being inadvertently closed.
4. Both Susanville District and Winnemucca District will check with permittees to see if gates are open by November 1. Someone from either district will also physically check to see if the gates are wired open or ~~removed~~.

B. Both permittees would have fence maintenance responsibilities.

Com

BUFFALO FROG CREEK FENCE PROPOSALS



T 34 N, R 19 E,

CALIFORNIA
BRITAIN RD

3513/53-23

1

2

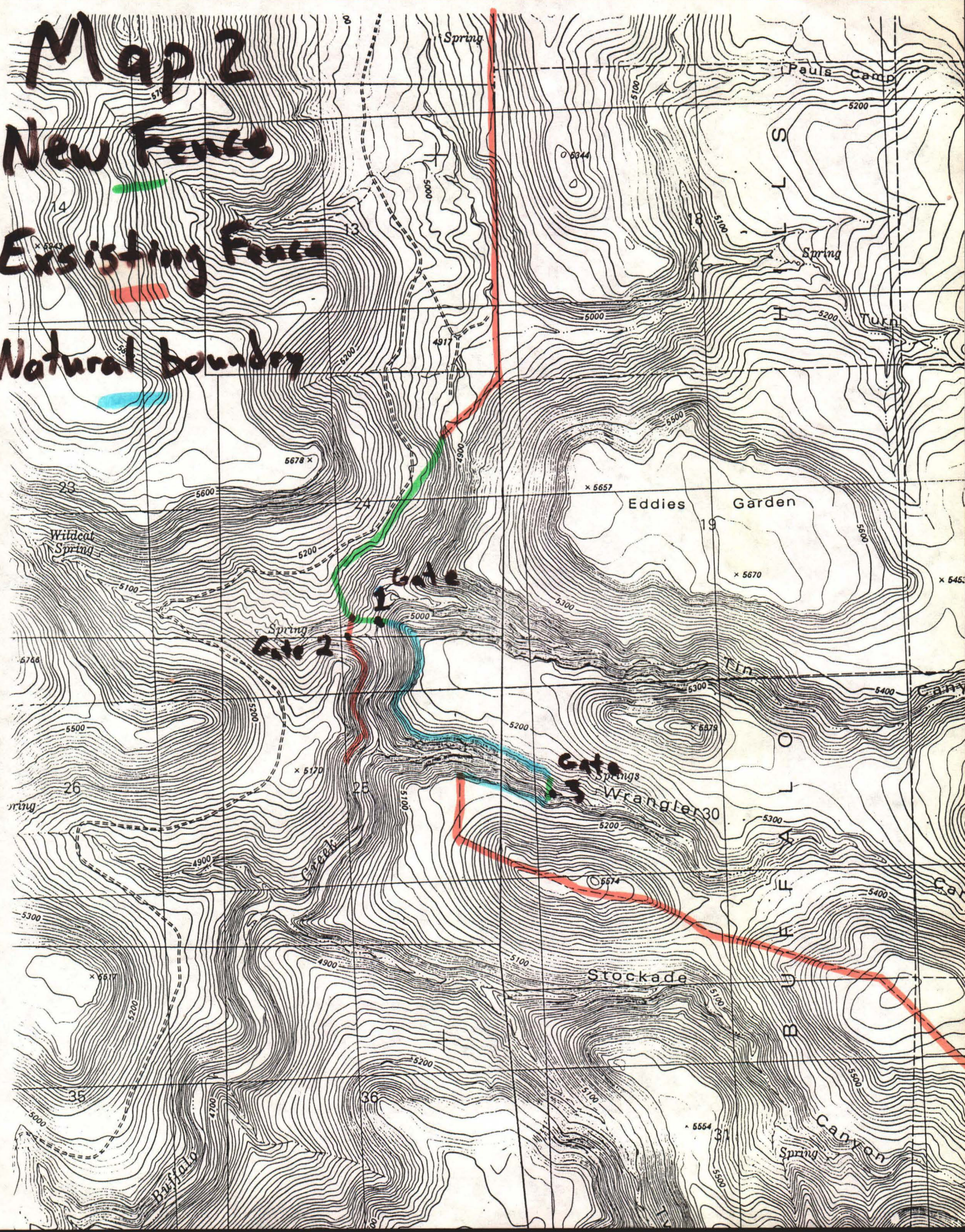
3

Map 2

New Fence

Existing Fence

Natural boundary



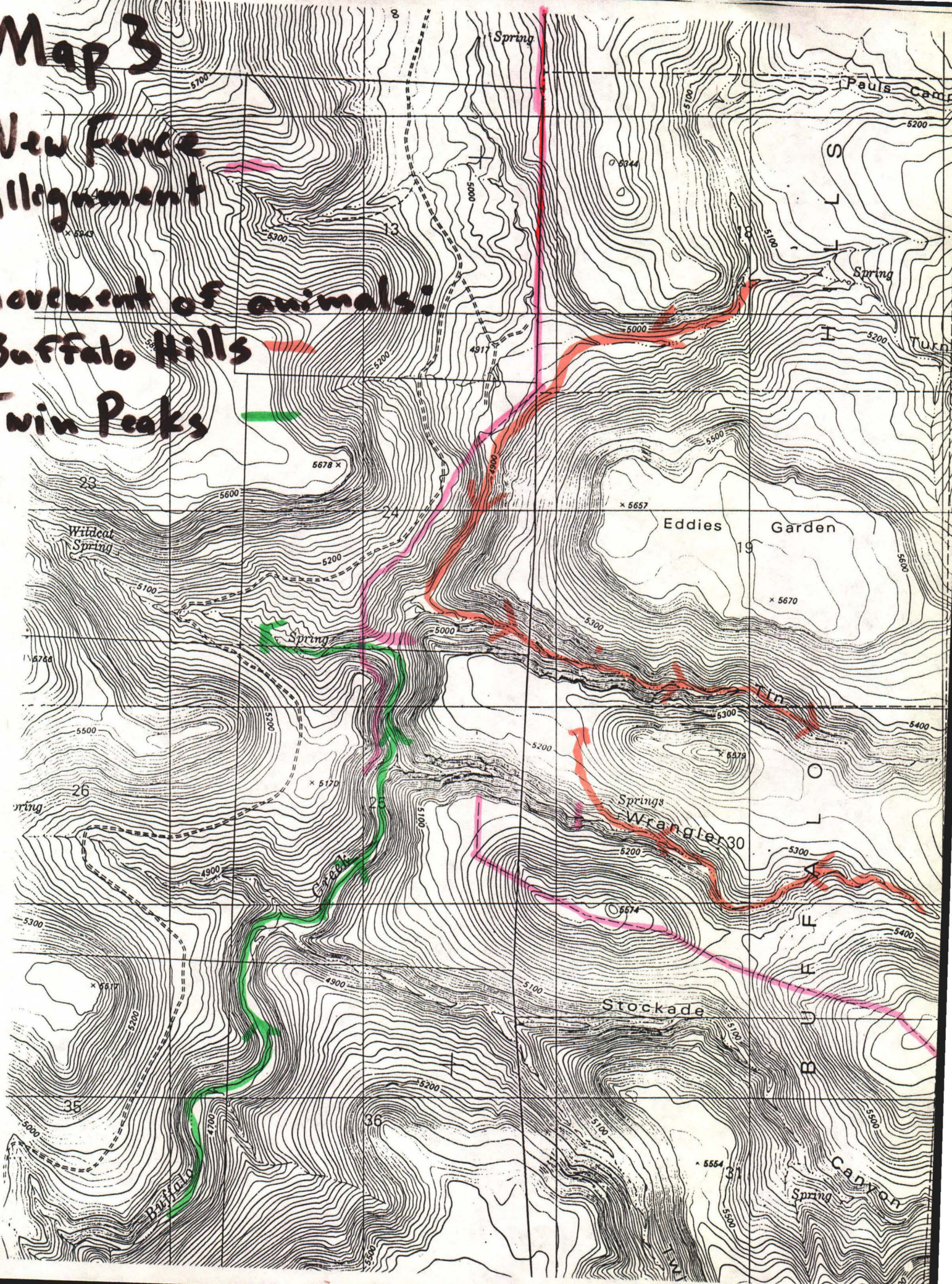
Map 3

New Fence alignment

Movement of animals:

Buffalo Hills —

Twin Peaks —



Map 1

Existing Fence

