



United States Department of the Interior

BUREAU OF LAND MANAGEMENT

Elko Field Office

3900 East Idaho Street

Elko, Nevada 89801-0611

<http://www.nv.blm.gov>

In Reply Refer To:  
4710 (NV-012)

DEC 12 2000

Commission for the Preservation of Wild Horses  
c/o Ms. Cathy Barcomb, Administrator  
885 Eastlake Blvd.  
Carson City, NV 89704

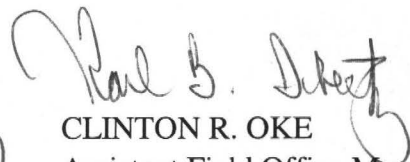
Dear Cathy;

We would like to follow-up our phone contact with you in October of 2000, concerning the Currie/Highway 93 emergency wild horse gather. Kathy McKinstry of my staff has compiled a gather summary which is enclosed. The new fence will most likely remain an obstacle to wild horse movements within the Antelope Valley HMA, as do most new fences within herd areas. The Elko Field Office staff will continue to observe herd health and habitat conditions in the area. Close monitoring will continue to be necessary, especially next summer when water is again in short supply.

My staff and I certainly appreciated your support for this gather and we feel that we conducted a safe and humane gather operation. We also feel that the horses gathered surely would have perished had we not stepped in. Gathering the animals was not the first choice of all of the wild horse advocacy groups contacted, but given the time constraints we were faced with, it did appear to be the best choice for the animal's welfare.

If you have any further questions concerning this matter, please feel free to contact Kathy McKinstry, Elko Field Office Wild Horse and Burro Specialist at the above address, or phone (775) 753-0290.

Sincerely,

  
CLINTON R. OKE  
Assistant Field Office Manager  
Renewable Resources

Enclosure as stated.

10/27/00

ANTELOPE VALLEY HMA  
EMERGENCY WILD HORSE GATHER

October 18 through October 27, 2000

Elko Field Office

Submitted by:  
Kathy McKinstry

## **Summary:**

10/18/00 - BLM staff set up a temporary trap in a gravel pit five miles south of Currie. The wings of the trap were not set up because the direction of the wings would depend upon where the horses were located on the morning of the 19<sup>th</sup>.

10/19/00 - BLM staff arrive at the gravel pit trap site at approximately 6:45 am. The horses were located north and south of the trap. It was decided to first put the wings facing north and then switch them to the south. The employees with saddle horses arrived at Currie at 8:00 am and were briefed on the proposed method of trapping. Kay Lear, a local rancher, arrived at the trap at 8:15 am with 2 domestic mares. One mare would be used for the judas or prather horse and the other tied to the trap.

The riders were able to bring 3 wild horses into the trap; 2 other horses with this group eluded capture. Of the first three trapped, two were freezebranded on the left hip with the numbers 68 and 72 which indicated that they were trapped in 1992 as part of the pilot fertility control study. #72 was a grulla mare. She was in extremely poor condition and she collapsed in the trap after capture. She was immediately provided with water/electrolytes and recovered. With #72 was a large grulla foal in good condition. In general the mares with foals were in the worst condition due to the larger nutrient and water requirements of nursing a foal.

After trapping these horses, the wings were moved to face the south and the riders loaded up their saddle horses into the horse trailers and went approximately 2 miles south. The riders started the wild horses toward the trap, but they all scattered. A black foal, sorrel yearling and a bay foal were successfully roped and brought into the trap. Due to the large number of horses that eluded capture, the decision was made to hire a helicopter and arrangements were made to meet the helicopter at Currie on 10/20/00 at 8:00 am.

Water was provided inside as well as outside the trap, as was grass hay, in hopes that the horses that eluded capture would come in for a drink. Kay Lear provided 1 bale of grass hay and 250 gallons of water. He will be reimbursed these provisions at the end of the gather.

10/20/00 - The helicopter arrived as scheduled and was briefed on the condition of the horses and the number of horses believed to be remaining on the east side of the highway. The pilot was Ted McBride of El Aero Services. Ted departed Currie to locate the horses and determine how he wanted the wings set up. Once again, the wings were set up to the north and Kay Lear provided the prather horse. 13 horses were trapped using the helicopter and one very old stud horse was roped. The horses trapped on this date were in slightly better condition than those caught on the 19<sup>th</sup>. The horses captured on the 19<sup>th</sup> were moved to the holding facility and those caught on the 20<sup>th</sup> were left in the trap. Water and grass hay were provided for the horses in the trap and were left. A large holding facility was constructed after being given the go-ahead to gather the horses on the west side of the highway; there were approximately 60 head that were being monitored on that side of the highway and it appeared that they were not foraging in a normal manner due to the new fence. Because of their deteriorating

condition, the decision was made to gather. Kay Lear provided 5 bales of grass hay and 500 gallons of water.

10/21/00 - Ten bales of grass hay were bought at Johnson's feed and Supply in Spring Creek. 10 rolls of orange snow fence were purchased from United Rentals. Tie rope and baling twine were also purchased from Stockmen's supply. Cedric Selby and I loaded up the horses trailer and departed for the holding facility. We arrived at 2:15 and put up the snow fence on the holding facility. We also tried to load the 2 studs that were in the trap, but the black stud was in no way going to load in the trailer. We put the old bay stud in the holding facility with the other 3 studs. The studs in the holding facility were fighting excessively, despite their poor condition. All of the horses looked much better today. They had perked up considerably, so the electrolytes must be helping. Kay Lear had fed in the morning, 4 bales of grass hay, and he had also provided 250 gallons of water. The BLM ranger had checked on the horses this morning and said she would also check them again on the 22<sup>nd</sup> and would feed.

**INVENTORY AS OF 10/21/00:**

| <u>Studs</u> | <u>Mares</u> | <u>Foals</u> |
|--------------|--------------|--------------|
| sorrel       | sorrel #68   | sorrel       |
| red dun      | buckskin #93 | black        |
| bay          | buckskin #70 | grulla       |
| bay          | grulla #72   | sorrel       |
| black        | buckskin     | sorrel       |
| grulla       | bay          |              |
| bay          | bay          |              |
|              | buckskin #73 |              |

10/22/00 - Did not go to holding facility. From home, arranged for Cliff Heaverne from High Desert Helicopters to come out and finish gather. BLM ranger called at 10:15 and reported that she had fed the horses. They all looked good and had water.

10/23/00 - Two employees hauled 2 tons of grass hay out to holding facility. I arrived at holding facility at 1100. We loaded horses that were left in the trap and put in holding facility. A BLM fire engine was waiting for us in Currie. We lead him in to holding facility and he thoroughly watered down the corrals and filled the troughs with water. Horses were fed and watered. They look better each day.

10/24/00 - 4 BLM employees arrived at Currie at 8:00 am. Two other BLM employees picked up the loading chute that we rented from David Neff in Ruby Valley. We agreed to pay 25.00/day rental on the chute. They arrived in Currie at 0830. Helicopter was supposed to arrive in Currie at 0800 but due to weather (rainy and bad visibility), he didn't arrive until 0845. I arrived at Currie at 0915. The guys had put up the wings and Cliff was flying horses; 2 had already come by the trap but eluded capture. Cliff trapped a 5/1 and one very poor stud was roped at the corrals. This was the stud who had been staying near the holding facility for the last couple of days, getting water and some hay there.

When Cliff came in to land for fuel at 11:15, he had a mechanical problem with the helicopter, so we were shut down for the day.

The BLM employees tore down the trap and spent the rest of the day looking for a trap site on the west side of the highway. 60 head of horses began running from Goshute Lake and headed right for highway 93. They went through a gap in the unfinished fence and were on the highway for several minutes. Cars, rv's semi-trucks etc., all came to a stop. Luckily, it appeared that the horses turned back to the west, but it would be difficult to tell until the next day where they would end up.

10/25/00 - 6 BLM employees began building a trap on the west side of Goshute Lake (on the west side of highway 93) at approximately 0830. The weather was very foggy and Cliff could not fly until it lifted. Started flying at 1200 and trapped a group of 25 and a group of 11. One bunch of horses would not come into the trap. The wind came up and we shut down at 1500. The horses were loaded onto gooseneck trailers and taken over to the holding facility where they were sorted and put into their respective corrals. All horses fed and watered.

The sides of the loading chute were covered with plywood in preparation to ship in the morning. Brand inspector (Chris Collis) was contacted for brand inspection in the morning.

10/26/00 - BLM employees met the brand inspector at the corrals at 0630. Horses were inspected and loaded on to the semi-tractor trailer at 0800. 47 mares and foals were shipped to PVC. As we left the holding corrals, we saw 6 head of horses within the highway right of way, just north of the unfinished portion of the fence. One grulla horse was cut *very* badly on the chest and was limping. It probably had happened during the night. I radioed Cliff and told him about it and the other horses on the highway. I told Cliff that if he didn't think the injured horse could make it to the trap, to let me know and I would make a decision to either destroy the horse or attempt to doctor it. BLM employees arrived at the trap site at about 0830 and began putting up the wing. Kay Lear arrived at 0900 with his prather horses. Trapped 11 head, including the mare that was cut so badly. This was about all of the horses we could find on the flats on the west side of the highway, so I called it quits. All 11 horses were transported to the holding facility. A lot of electrolytes were added to the water, hoping to get the cut mare perked up. We waited for the brand inspector until 1600, then headed in. The weather had been bad all day, raining, snowing, windy, etc. I had asked Dave Vandenberg to call NDOT to see about when the gap in the fence would be finished. Dave called me back and said that Mike Glock of NDOT told him that the fence was "fill in work" and there was no schedule for completion. I again emphasized how critical it was for safety of horses as well as motorists to get the fence finished. As long as there was a gap in the fence, we would continue to have wild horses on the highway.

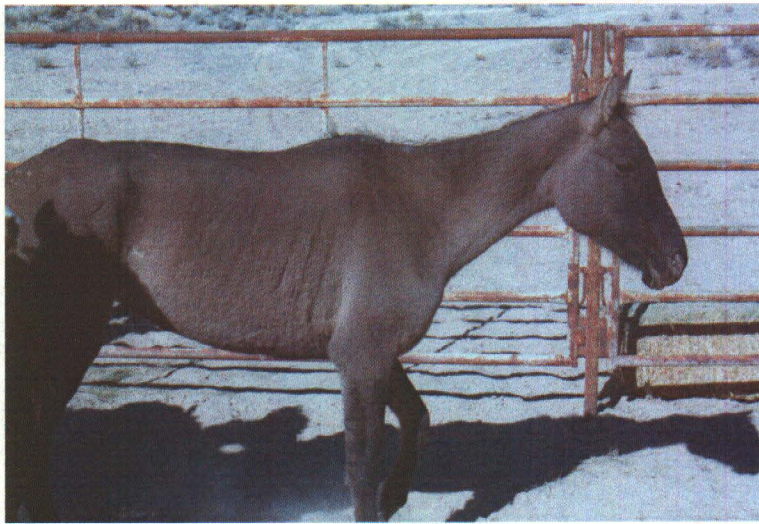
10/27/00 - 0630 4 BLM employees met the brand inspector at the holding facility and loaded 30 horses on to semi-tractor trailer. The cut mare was still up and was shipped to PVC. We tore down the trap and got everything loaded by 1130. Cliff took off around 1000, headed for home.

10/30-11/1/00 - Haul equipment back to respective offices. General clean up.

Final report from PVC - shipped a total of 76 horses. At PVC, 2 died. One was the grulla mare that was cut so badly. She died on Sunday, October 29, 2000, probably from loss of blood and general weakness.

|                      |    |
|----------------------|----|
| Old Studs -          | 12 |
| 6-9 year old studs - | 5  |
| Young Studs -        | 10 |
| Old Mares -          | 17 |
| 6-9 year old mares - | 4  |
| Young Mares -        | 18 |
| Foals -              | 10 |
| <br>                 |    |
| TOTAL -              | 76 |

After the gather was complete, I continued to get calls from the highway patrol, NDOT and the public about horses near the highway, but only one incident of a horse actually being on the road was reported. NDOT found a lone horse north of Currie on the highway. Together with a trooper from NHP, they managed to herd the horse off of the highway and through a gate in the fence. As of this writing, the fence is still not complete; there remains a small gap in the fence on both sides of the highway from the town of Currie south to the Cherry Creek road, approximately 1/2 mile.







HERD AREA INFORMATION AND CLOSEOUT SHEET FOR DISTRICT

Date Closed: November 11, 2000  
 Herd Area: Antelope Valley HMA NV107  
 District: Elko Field Office

|                          | NUMBER | PERCENTAGE |
|--------------------------|--------|------------|
| Total to Shipped to PVC  | 76     |            |
| Down On Truck At Arrival | 0      | 0 %        |
| Died During Transport    | 0      | 0 %        |

\*\*\*\*\*


|                          |   |             |
|--------------------------|---|-------------|
| Died/Destroyed at PVC    | 2 | 2.6315789 % |
| Blind/Missing, etc-Eyes  | 0 | 0 %         |
| Old fracture             | 0 | 0 %         |
| Weak,poor,unable to rise | 1 | 1.3157895 % |
| Seizures                 | 0 | 0 %         |
| Working Injuries         | 1 | 1.3157895 % |
| Sickness(Pneumonia)      | 0 | 0 %         |
| Deformity                | 0 | 0 %         |
| Other..... Unknown       | 0 | 0 %         |
| Other.....               | 0 | 0 %         |

\*\*\*\*\*

|                          |   |             |
|--------------------------|---|-------------|
| Injuries/Sickness at PVC | 5 | 6.5789474 % |
| Lame                     | 2 | 2.6315789 % |
| Leg Wound                | 3 | 3.9473684 % |
| Head Wound               | 0 | 0 %         |
| Sickness                 | 0 | 0 %         |
| Other.....               | 0 | 0 %         |
| Other.....               | 0 | 0 %         |

\*\*\*\*\*

Contract Veterinarian Comments On Overall Herd Health \_\_\_\_\_  
 Horses were generally thin on arrival. Most did well on hay after arriving at facility

Signed  Richard Sanford, D.V.M.

Curie Emergency

①

| HMA: Antelope Valley                  |     |     |                               |                   |                   |               |                        |                     |                                    |
|---------------------------------------|-----|-----|-------------------------------|-------------------|-------------------|---------------|------------------------|---------------------|------------------------------------|
| DATE: 10/19-27 RECORDER: K. McKinstry |     |     |                               |                   |                   |               |                        |                     |                                    |
| Color                                 | Age | Sex | Body Condition (Thin/Mod/Fat) | Height (in hands) | Breze Brand (S/N) | Mares Wet/Dry | Fert. Cont. Shot (S/N) | Category (A, B etc) | Disposition (ship/release/destroy) |
| 1 Sorrel                              | 10  | S   |                               |                   |                   |               |                        |                     | D                                  |
| 2 Buckskin                            | 10  | S   |                               |                   |                   |               |                        |                     | D                                  |
| 3 Sorrel                              | 6   | S   |                               |                   |                   |               |                        |                     | ?                                  |
| 4 Sorrel                              | 18  | S   |                               |                   |                   |               |                        |                     | D                                  |
| 5 Straw Roan                          | 10  | S   |                               |                   |                   |               |                        |                     | D                                  |
| 6 Red dun                             | 2   | S   |                               |                   |                   |               |                        |                     | B                                  |
| 7 Black                               | 3   | S   |                               |                   |                   |               |                        |                     | B                                  |
| 8 Bay                                 | 18  | S   |                               |                   |                   |               |                        |                     | D                                  |
| 9 Bay                                 | 25  | S   |                               |                   |                   |               |                        |                     | D                                  |
| 10 Red dun                            | 20  | S   |                               |                   |                   |               |                        |                     | D                                  |
| 11 Red dun                            | 9   | S   |                               |                   |                   |               |                        |                     | ?                                  |
| 12 Sorrel                             | 2   | S   |                               |                   |                   |               |                        |                     | B                                  |
| 13 Red dun                            | 20  | S   |                               |                   |                   |               |                        |                     | D                                  |
| 14 Bay                                | 25  | S   |                               |                   |                   |               |                        |                     | D                                  |
| 15 Bay                                | 20  | S   |                               |                   |                   |               |                        |                     | D                                  |
| 16 Gray                               | 8   | S   |                               |                   |                   |               |                        |                     | ?                                  |
| 17 Black                              | 5   | S   |                               |                   |                   |               |                        |                     | B                                  |
| 18 Buckskin                           | 12  | S   |                               |                   |                   |               |                        |                     | D                                  |
| 19 Grulla                             | 15  | S   |                               |                   |                   |               |                        |                     | D                                  |
| 20 Sorrel                             | 8   | S   |                               |                   |                   |               |                        |                     | ?                                  |

This area is for book keeping purposes (contract gathers). Optional.

| Category       | Brought forward previous page(s) (Total #s) | This page (Total #s) | Running total |
|----------------|---|----------------------|---------------|
| A = Young Mare |   |                      |               |
| B = Young Stud | 4   |                      |               |
| C = Old Mare   |   |                      |               |
| D = Old Stud   | 12  |                      |               |
| E = Foal       |   |                      |               |
| Died/Destroyed |   |                      |               |

? 6-9 ♂ 4

| HMA: Antelope Valley |     | DATE: 10/19-27/00 |                               | RECORDER: L. McKinstry |                    | (2)           |                        |                     |                                     |
|----------------------|-----|-------------------|-------------------------------|------------------------|--------------------|---------------|------------------------|---------------------|-------------------------------------|
| Color                | Age | Sex               | Body Condition (Thin/Mod/Fat) | Height (in hands)      | Breeze Brand (Y/N) | Mares Wet/Dry | Perf. Cont. Shot (Y/N) | Category (A, B etc) | Disposition (stump/release/destroy) |
| 1 Buckskin           | 8   | S                 |                               |                        |                    |               |                        |                     | ?                                   |
| 2 Buckskin           | 12  | M                 |                               |                        | #9                 |               |                        |                     | C                                   |
| 3 Sorrel             | C   | S                 | 7 months                      |                        |                    |               |                        |                     | E                                   |
| 4 Red dun            | C   | M                 | 7 months                      |                        |                    |               |                        |                     | E                                   |
| 5 Sorrel             | 1   | S                 |                               |                        |                    |               |                        |                     | B                                   |
| 6 Sorrel             | C   | S                 | 3 months                      |                        |                    |               |                        |                     | E                                   |
| 7 Buckskin           | C   | S                 | 6 months                      |                        |                    |               |                        |                     | E                                   |
| 8 Brulla             | 10  | M                 |                               |                        | #72                |               | Collapsed in trap      |                     | C                                   |
| 9 Sorrel             | 1   | S                 |                               |                        |                    |               |                        |                     | B                                   |
| 10 Brulla            | C   | M                 | 5 months                      |                        |                    |               |                        |                     | E                                   |
| 11 Buckskin          | 12  | M                 |                               |                        | #67                |               |                        |                     | C                                   |
| 12 Sorrel            | 8   | M                 |                               |                        |                    |               |                        |                     | ?                                   |
| 13 Brulla            | 1   | M                 |                               |                        |                    |               |                        |                     | A                                   |
| 14 Bay               | 1   | S                 |                               |                        |                    |               |                        |                     | B                                   |
| 15 Black             | 20  | M                 |                               |                        |                    |               |                        |                     | C                                   |
| 16 Buckskin          | 10  | M                 |                               |                        | #56                |               |                        |                     | C                                   |
| 17 Red dun           | 4   | M                 |                               |                        |                    |               |                        |                     | A                                   |
| 18 Sorrel            | 10  | M                 |                               |                        | #68                |               |                        |                     | C                                   |
| 19 Bay               | 4   | M                 |                               |                        |                    |               |                        |                     | A                                   |
| 20 Red dun           | C   | M                 | 3 months                      |                        |                    |               |                        |                     | E                                   |

This area is for book keeping purposes (contract gatherers). Optional.

| Category       | Brought forward previous page(s) (Total #s) | This page (Total #s) | Running total |
|----------------|---|----------------------|---------------|
| A = Young Mare | 0   | 3                    | 3             |
| B = Young Stud | 4   | 3                    | 7             |
| C = Old Mare   | 0   | 6                    | 6             |
| D = Old Stud   | 12  | 0                    | 12            |
| E = Foal       | 0   | 6                    | 6             |
| Died/Destroyed |   |                      |               |

? 6-9 Studs 4  
 ? 6-9 Mares 0

1 5  
 1 1

HMA: Antelope Valley DATE: 10/19-27/00 RECORDER: K. McKinstry

| Color       | Age | Sex | Body Condition (Thin/Mod/Plat) | Height (in hands) | Breze Brand (Y/N) | Mares Wet/Dry | Refr. Goni. Shot (Y/N) | Category (A, B, etc) | Disposition (clip/release/destroy) |
|-------------|-----|-----|--------------------------------|-------------------|-------------------|---------------|------------------------|----------------------|------------------------------------|
| 1 Buckskin  | 2   | M   |                                |                   |                   |               |                        |                      | A                                  |
| 2 Sorrel    | 12  | M   |                                |                   | #59               |               |                        |                      | C                                  |
| 3 Buckskin  | 12  | M   |                                |                   | #74               |               |                        |                      | C                                  |
| 4 Grulla    | 1   | S   |                                |                   |                   |               |                        |                      | B                                  |
| 5 Red dun   | 7   | M   |                                |                   |                   |               |                        |                      | ?                                  |
| 6 Buckskin  | 15  | M   |                                |                   | #73               |               |                        |                      | C                                  |
| 7 Buckskin  | 2   | M   |                                |                   |                   |               |                        |                      | A                                  |
| 8 Sorrel    | 4   | M   |                                |                   | #0                |               |                        |                      | C                                  |
| 9 Sorrel    | 8   | M   |                                |                   | #91               |               |                        |                      | C                                  |
| 10 Bay      | C   | S   |                                | 3 months          |                   |               |                        |                      | E                                  |
| 11 Sorrel   | C   | S   |                                | 5 months          |                   |               |                        |                      | E                                  |
| 12 Sorrel   | 1   | M   |                                |                   |                   |               |                        |                      | A                                  |
| 13 Black    | C   | S   |                                | 4 months          |                   |               |                        |                      | E                                  |
| 14 Sorrel   | 1   | S   |                                |                   |                   |               |                        |                      | B                                  |
| 15 Black    | 6   | M   |                                |                   | #0                |               |                        |                      | C                                  |
| 16 Sorrel   | 1   | M   |                                |                   |                   |               |                        |                      | A                                  |
| 17 Red dun  | 8   | M   |                                |                   | #8                |               |                        |                      | C                                  |
| 18 Buckskin | 12  | M   |                                |                   | #70               |               |                        |                      | C                                  |
| 19 Buckskin | 10  | M   |                                |                   |                   |               |                        |                      | C                                  |
| 20 Bay      | 1   | M   |                                |                   |                   |               |                        |                      | A                                  |

This area is for book keeping purposes (contract gathers). Optional.

| Category       | Brought forward previous page(s) (Total #s) | This page (Total #s) | Running total |
|----------------|---|----------------------|---------------|
| A = Young Mare | 3   | 5                    | 8             |
| B = Young Stud | 7   | 2                    | 9             |
| C = Old Mare   | 6   | 9                    | 15            |
| D = Old Stud   | 12  | 0                    | 12            |
| E = Foal       | 6   | 3                    | 9             |
| Died/Destroyed |   |                      |               |

7 6-9 studs 5 0 5  
 7 6-9 mares 1 1 2

# Cervid Emergency

(4)

HMA: Antelope Valley. DATE: 10/19-27 RECORDER: K. McKinstry

| Color       | Age | Sex            | Body Condition (Thin/Mod/Fat)  | Height (in hands) | Freeze Brand (3/4N) | Mares Wet/Dry | Refr. Count Shot (3/4N) | Category (A, B etc) | Disposition (ship/release/destroy) |   |
|-------------|-----|----------------|--------------------------------|-------------------|---------------------|---------------|-------------------------|---------------------|------------------------------------|---|
| 1 Black     | C   | M              |                                | 4 months          |                     |               |                         |                     | E                                  |   |
| 2 Buckskin  | 3   | M              |                                |                   |                     |               |                         |                     | A                                  |   |
| 3 Buckskin  | 12  | M              |                                |                   |                     |               |                         |                     | C                                  |   |
| 4 Sorrel    | 2   | M              |                                |                   |                     |               |                         |                     | A                                  |   |
| 5 Buckskin  | 5   | M              |                                |                   |                     |               |                         |                     | A                                  |   |
| 6 Sorrel    | 7   | M              |                                |                   |                     |               |                         |                     | ?                                  |   |
| 7 Buckskin  | 12  | M              |                                |                   | # 93                |               |                         |                     | C                                  |   |
| 8 Buckskin  | 2   | M              |                                |                   |                     |               |                         |                     | A                                  |   |
| 9 Bay       | 3   | M              |                                |                   |                     |               |                         |                     | A                                  |   |
| 10 Red dun  | 1   | <del>M</del> S |                                |                   |                     |               |                         |                     | B                                  |   |
| 11 Bay      | 4   | M              |                                |                   |                     |               |                         |                     | A                                  |   |
| 12 Bay      | 5   | M              |                                |                   |                     |               |                         |                     | A                                  |   |
| 13 Buckskin | 2   | M              |                                |                   |                     |               |                         |                     | A                                  |   |
| 14 Bay      | 7   | M              |                                |                   |                     |               |                         |                     | ?                                  |   |
| 15 Sorrel   | 3   | M              |                                |                   |                     |               |                         |                     | A                                  |   |
| 16 Grulla   | 2   | M              | Died at PVC due to chest wound |                   |                     |               |                         |                     |                                    | A |
| 17          |     |                | Sustained on highway fence.    |                   |                     |               |                         |                     |                                    |   |
| 18          |     |                |                                |                   |                     |               |                         |                     |                                    |   |
| 19          |     |                |                                |                   |                     |               |                         |                     |                                    |   |
| 20          |     |                |                                |                   |                     |               |                         |                     |                                    |   |

This area is for book keeping purposes (contract gathers). Optional.

| Category       | Brought forward previous page(s) (Total #s) | This page (Total #s) | Running total |
|----------------|---|----------------------|---------------|
| A = Young Mare | 8   | 9 10                 | 17 18         |
| B = Young Stud | 9   | 1                    | 10            |
| C = Old Mare   | 15  | 2                    | 17            |
| D = Old Stud   | 12  | 0                    | 12            |
| E = Foal       | 9   | 1                    | 10            |
| Died/Destroyed |   |                      |               |

? 6-9 studs 5 0 5

? 6-9 mares 2 2 11



# BLM News

10/20/00

NEVADA STATE OFFICE NO. 2001-08  
FOR RELEASE: October 20, 2000  
CONTACT: Maxine Shane in Reno (775) 861-6586

## EMERGENCY WILD HORSE GATHER NEAR CURRIE

The Bureau of Land Management (BLM) began an emergency gather of about 85 wild horses near Currie, Nevada, today.

Twenty-four of the animals are being removed on the east side of State Highway 93 in Elko County which was recently fenced for public safety by the Nevada Department of Transportation. The BLM has been hauling water to those animals for about three weeks, and had anticipated their removal because of loss of access to their water supply.

Wild horses on the west side of the highway have access to water, but proved that the old adage "You can lead a horse to water, but you can't make him drink" is well founded. The BLM has been monitoring about 60 wild horses which have refused to move to a different water source since the fence was installed. The animals' condition is deteriorating so quickly that the BLM made the decision to remove the animals which seem to be unwilling to adjust to the disruption of their movement patterns.

The emergency wild horse removal began on October 19 when Elko field office personnel rounded up six animals from horseback. A helicopter has been ordered to assist in the rest of the removal which is expected to take no more than a few days.

- MORE -

## EMERGENCY WILD HORSE GATHER NEAR CURRIE - 2222

Numerous wild horses remain in the Antelope Valley Herd Management Area (HMA) which adjoins the Ely field office's Antelope HMA. A gather to bring the HMA to appropriate management levels will be among the gathers scheduled as the BLM implements an initiative funded by Congress that includes a comprehensive strategy to achieve healthy rangelands and viable wild horse and burro herds.

The animals removed from the Antelope HMA are being transported to the National Wild Horse and Burro Center at Palomino Valley near Sparks, Nevada. For information on how to adopt, call the facility at (775) 475-2222. You may also call toll free (1 866-4MUSTANGS) or visit the Internet at [www.wildhorseandburro.blm.gov](http://www.wildhorseandburro.blm.gov).