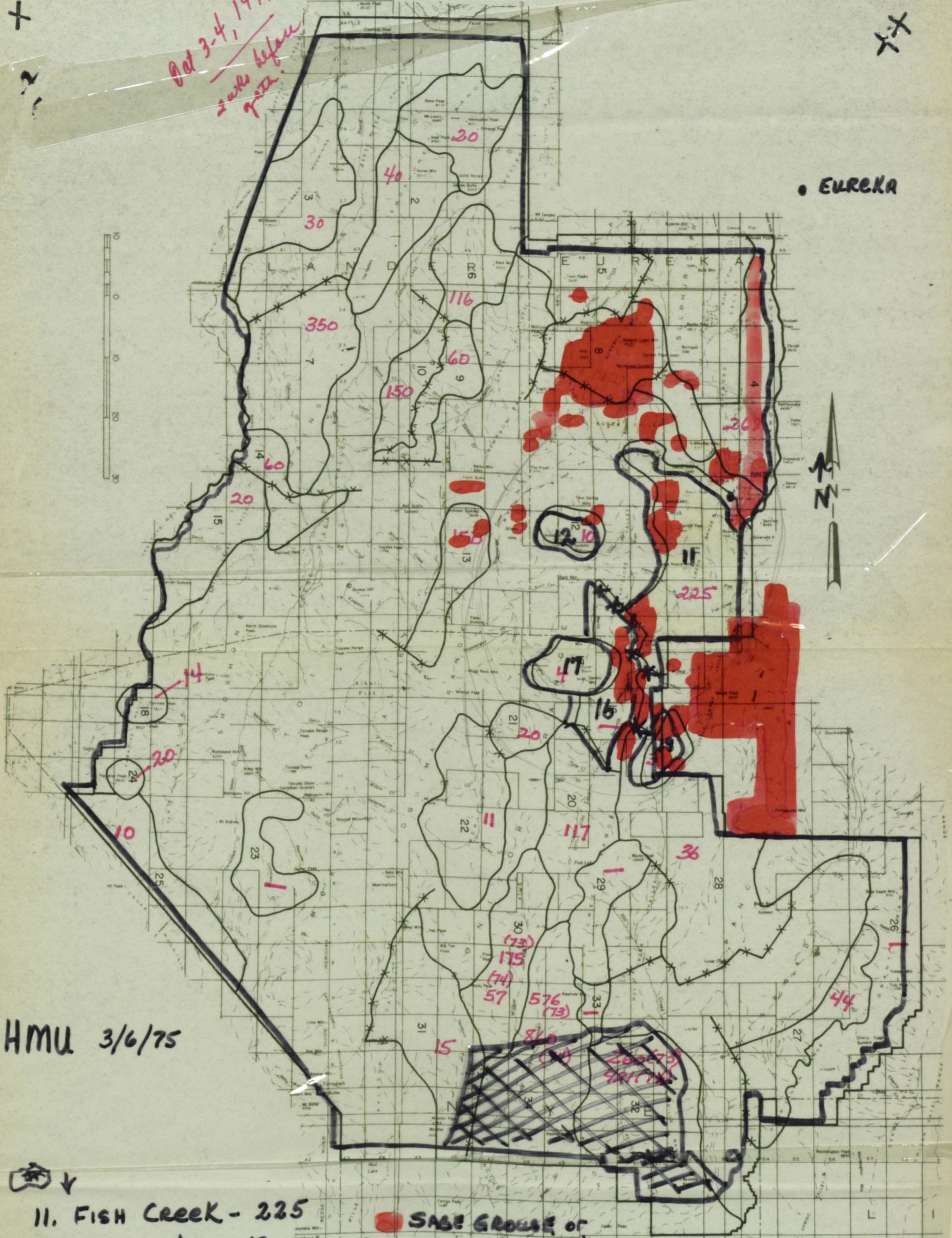


Oct 3-4, 1979
2 weeks before
grazing.

EUREKA



HMU 3/6/75

- 11. Fish Creek - 225
 - x 12. N. Monitor - 12
 - 16. Antelope - ?
 - x 17. Butler Basin - 4
 - x 19. Park Mtn. - 35
- HERD MANAGEMENT UNITS

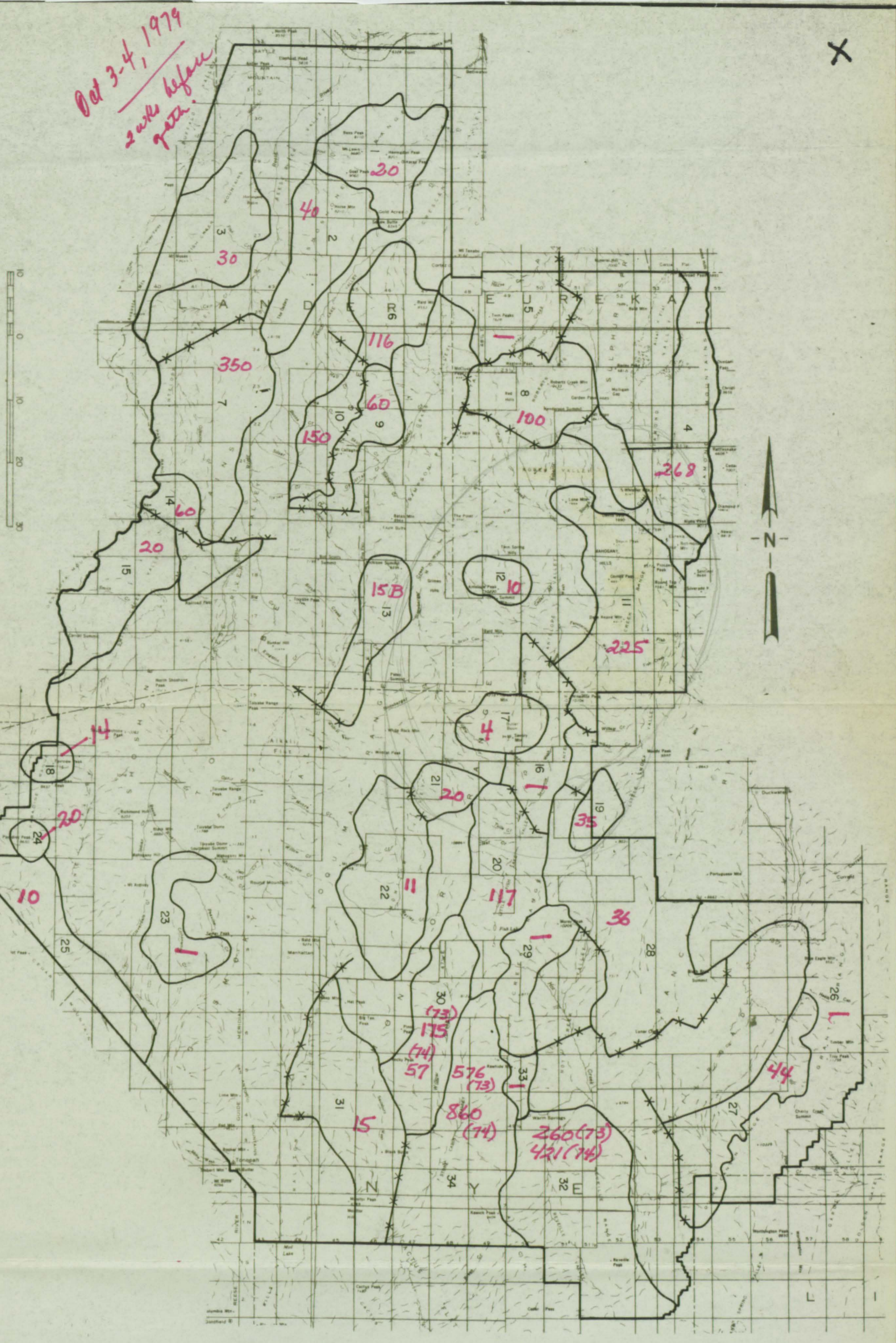
● SAGE GROUSE or DEER STIPULATIONS

▨ 3/75 PROPOSED WH RANGE

x outside PROPOSED AREL.

WH POPULATIONS

Units	Number of Horse
1. North Shoshone	20
2. South Shoshone	40
3. Augusta	30
4. Diamond	268
5. Pine Creek	?
6. Bald Mtn.	116
7. New Pass Ravenswood	350
8. Roberts Mtn.	100
9. Grass Valley	60
10. Austin	150
11. Fish Creek	225
12. North Monitor	10
13. Hickison Burros	15
14. Mtn. Airy	60
15. Smith Creek	20+
16. Antelope	?
17. Butler Basin	4
18. Sherman	14
19. Park Mtn.	35
20. Fish Lake	117
21. Dobbin	20
22. Monitor	11
23. Peavine	?
24. Paradise	20
25. lone	10
26. Blue Eagle	?
27. Quinn	44
28. Sand Springs	36
29. Hot Creek	175 (2-73)
30. Willow Creek	57 (7-74)
31. Soulsbury	15
32. Revellie	260 (2-73)
33. Warm Springs	481 (7-74)
34. Stone Cabin	10 (7-74)



Units	Number of Horse	
1 North Shoshone	20	
2 South Shoshone	40	
3 Augusta	30	
4 Diamond	268	
5 Pine Creek	?	
6 Bald Mtn.	116	
7 New Pass Ravenswood	350	
8 Roberts Mtn.	100	
9 Gross Valley	60	
10 Austin	150	
11 Fish Creek	225	
12 North Monitor	10	
13 Hickison Burros	15	
14 Min. Airy	60	
15 Smith Creek	20+	
16 Antelope	?	
17 Butler Basin	4	
18 Sherman	14	
19 Park Min.	35	
20 Fish Lake	117	
21 Dobbin	20	
22 Monitor	11	
23 Peavine	?	
24 Paradise	20	
25 lone	10	
26 Blue Eagle	?	
27 Quinn	44	
28 Sand Springs	36	
29 Hot Creek	?	
30 Willow Creek	175	(2-73)
31 Soulsbury	57	(7-74)
32 Revellie	15	
33 Warm Springs	260	(2-73)
34 Stone Cabin	421	(7-74)
	?	
	576	(2-73)
	860	(7-74)

BATTLE MTN. DISTRICT
WILD HORSE MANAGEMENT PLAN
HERD MANAGEMENT UNITS

Oct 3-4, 1979
marks before
gate.