

Gold Butte

G 6-29-88



United States Department of the Interior



BUREAU OF LAND MANAGEMENT
NEVADA STATE OFFICE
850 HARVARD WAY
P.O. BOX 12000
RENO, NEVADA 89520-0006

IN REPLY REFER TO:

4700
(NV-931.3)

JUN 29 1988

Commission for the Preservation of
Wild Horses
c/o Terri Jay, Executive Director
58 Hardy Way
Sparks, NV 89431

Dear Ms. Jay:

The Bureau of Land Management proposes to gather excess wild horses and burros from public lands in the State of Nevada no sooner than 28 days from the date of this letter.

The proposed gathering will be conducted in the Las Vegas District in the areas shown on the enclosed maps and as described below.

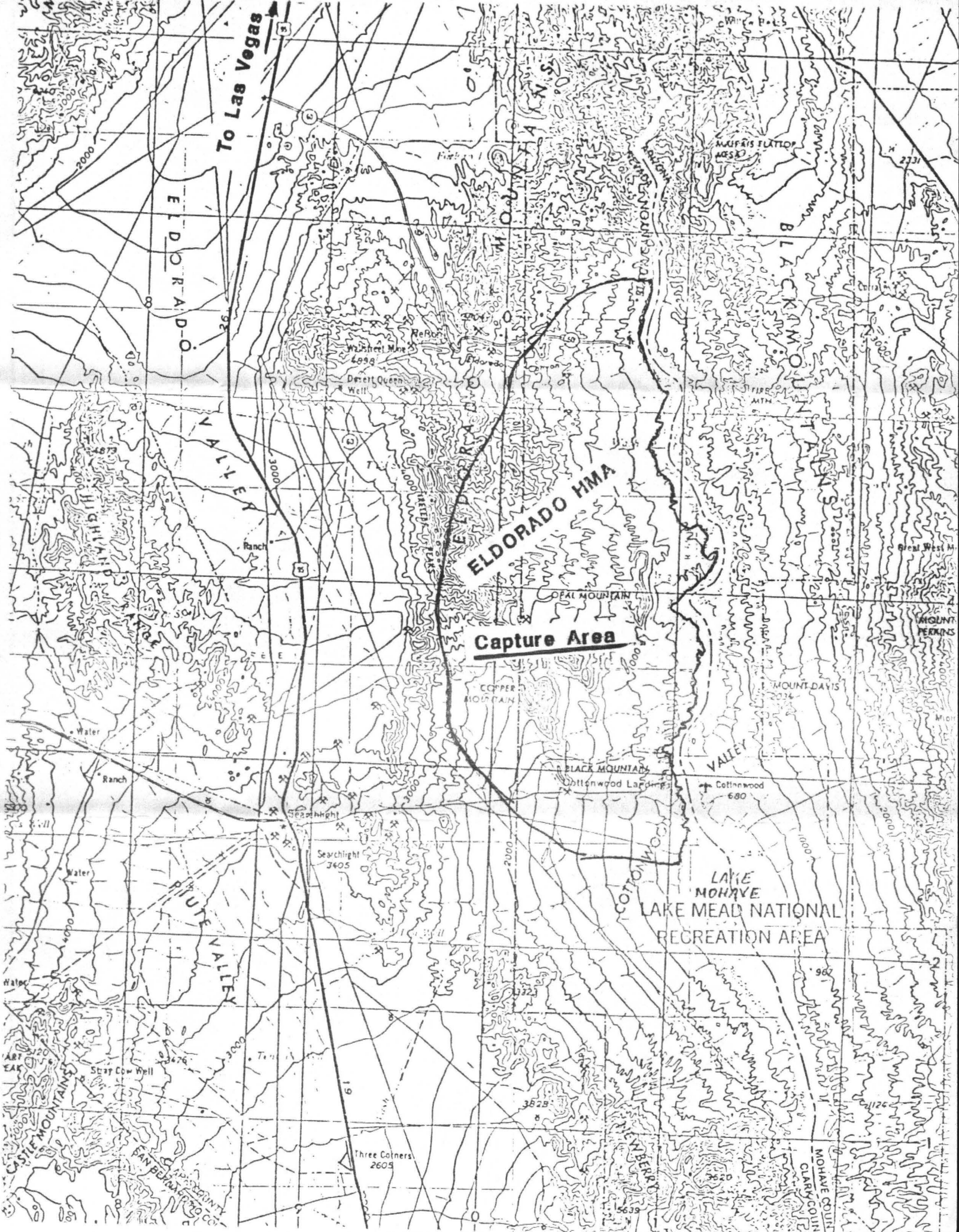
<u>Herd Management Area/Herd Area/Name</u>	<u>Environmental Analysis Record Number</u>	<u>Reason for Gathering</u>	<u>Approximate Number to Be Removed</u>	<u>Approximate Number to Remain</u>
Gold Butte	NV-056-8-24	Implement Land Use Plan	300	100
Eldorado	"	"	100	139

Sincerely,

For

Edward F. Spang
State Director, Nevada

1 Enclosure
1 - Maps of Proposed Gathering (4 pp)



To Las Vegas

ELDERADO

WHITE VALLEY

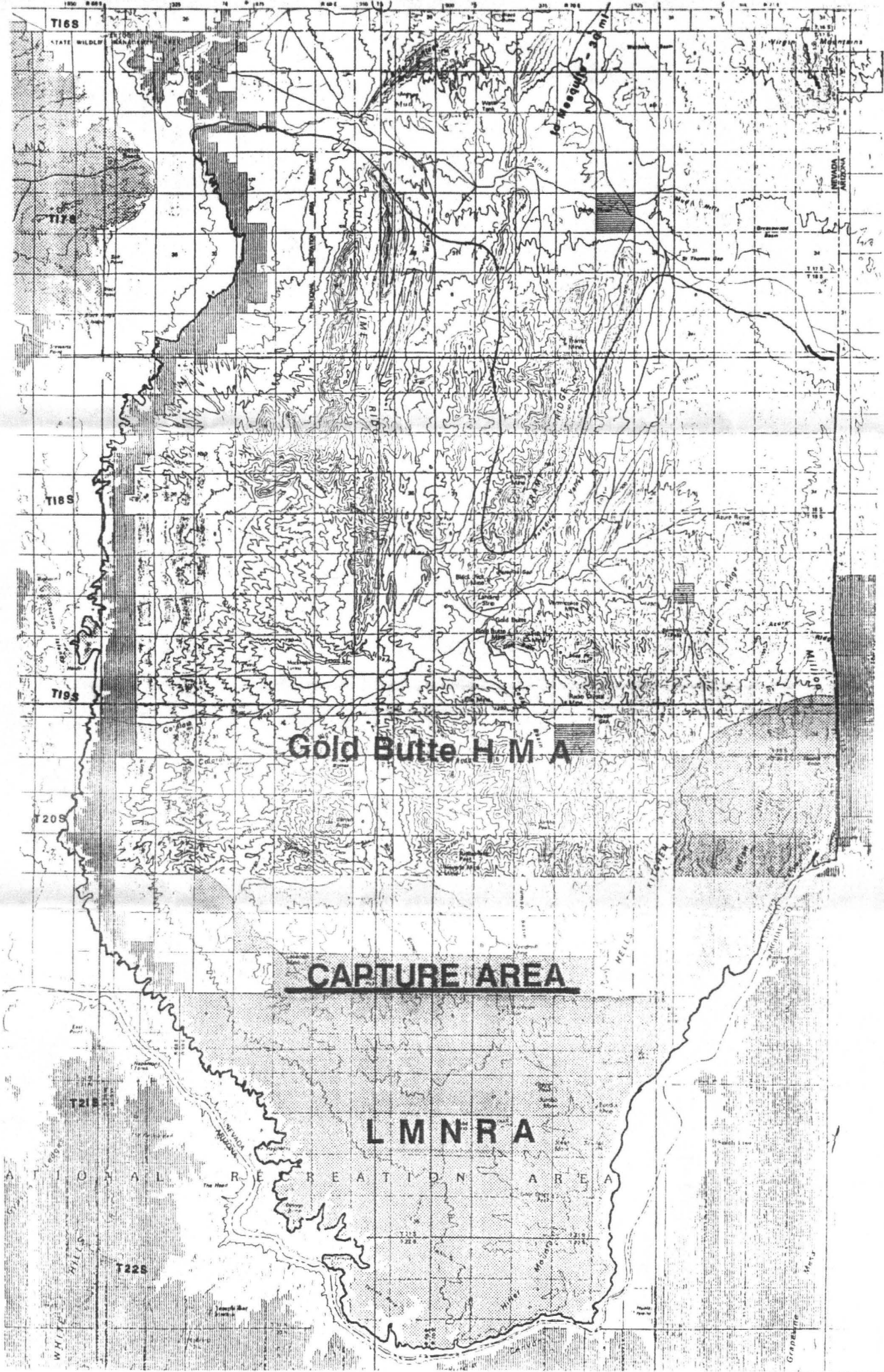
ELDERADO HMA

Capture Area

VALLEY

LAKE MOHAVE
LAKE MEAD NATIONAL
RECREATION AREA

MOHAVE COUNTY
CLARK COUNTY



T16S

T17S

T18S

T19S

T20S

T21S

T22S

Gold Butte H M A

CAPTURE AREA

LMNRA

NATIONAL RECREATION AREA

STATE WILDLIFE

MANAGEMENT

ACT

1966

REVISED

1974

SCALE

1:50,000

NEVADA

ARIZONA

UTAH

IDAHO

OREGON

CALIFORNIA

TEXAS

NEW MEXICO

COLORED

KENTUCKY

TENNESSEE

MISSISSIPPI

ALABAMA

LOUISIANA

MISSOURI

ILLINOIS

INDIANA

OHIO

PENNSYLVANIA

MARYLAND

DELAWARE

VIRGINIA

WEST VIRGINIA

PENNSYLVANIA

MARYLAND

DELAWARE

VIRGINIA

WEST VIRGINIA

PENNSYLVANIA

MARYLAND

DELAWARE

VIRGINIA

WEST VIRGINIA

PENNSYLVANIA

MARYLAND

DELAWARE

VIRGINIA

WEST VIRGINIA

PENNSYLVANIA

MARYLAND

DELAWARE

VIRGINIA

WEST VIRGINIA

PENNSYLVANIA

MARYLAND

DELAWARE

VIRGINIA

WEST VIRGINIA

PENNSYLVANIA

MARYLAND

DELAWARE

VIRGINIA

WEST VIRGINIA

PENNSYLVANIA

MARYLAND

DELAWARE

VIRGINIA

WEST VIRGINIA

PENNSYLVANIA

MARYLAND

DELAWARE

VIRGINIA

WEST VIRGINIA

PENNSYLVANIA

MARYLAND

DELAWARE

VIRGINIA

WEST VIRGINIA

PENNSYLVANIA

MARYLAND

DELAWARE

VIRGINIA

WEST VIRGINIA

PENNSYLVANIA

MARYLAND

DELAWARE

VIRGINIA

WEST VIRGINIA

PENNSYLVANIA

MARYLAND

DELAWARE

VIRGINIA

WEST VIRGINIA

PENNSYLVANIA

MARYLAND

DELAWARE

VIRGINIA

WEST VIRGINIA

PENNSYLVANIA

MARYLAND

DELAWARE

VIRGINIA

WEST VIRGINIA

PENNSYLVANIA

MARYLAND

DELAWARE

VIRGINIA

WEST VIRGINIA

PENNSYLVANIA

MARYLAND

DELAWARE

VIRGINIA

WEST VIRGINIA

PENNSYLVANIA

MARYLAND

DELAWARE

VIRGINIA

WEST VIRGINIA

PENNSYLVANIA

MARYLAND

DELAWARE

VIRGINIA

WEST VIRGINIA

PENNSYLVANIA

MARYLAND

DELAWARE

VIRGINIA

WEST VIRGINIA

PENNSYLVANIA

MARYLAND

DELAWARE

VIRGINIA

WEST VIRGINIA

PENNSYLVANIA

MARYLAND

DELAWARE

VIRGINIA

WEST VIRGINIA

PENNSYLVANIA

MARYLAND

DELAWARE

VIRGINIA

WEST VIRGINIA

PENNSYLVANIA

MARYLAND

DELAWARE

VIRGINIA

WEST VIRGINIA

PENNSYLVANIA

MARYLAND

DELAWARE

VIRGINIA

WEST VIRGINIA

PENNSYLVANIA

MARYLAND

DELAWARE

VIRGINIA

WEST VIRGINIA

PENNSYLVANIA

MARYLAND

DELAWARE

VIRGINIA

WEST VIRGINIA

PENNSYLVANIA

MARYLAND

DELAWARE

VIRGINIA

WEST VIRGINIA

PENNSYLVANIA

MARYLAND

DELAWARE

VIRGINIA

WEST VIRGINIA

PENNSYLVANIA

MARYLAND

DELAWARE

VIRGINIA

WEST VIRGINIA

PENNSYLVANIA

MARYLAND

DELAWARE

VIRGINIA

WEST VIRGINIA

PENNSYLVANIA

MARYLAND

DELAWARE

VIRGINIA

WEST VIRGINIA

PENNSYLVANIA

MARYLAND

DELAWARE

VIRGINIA

WEST VIRGINIA

PENNSYLVANIA

MARYLAND

DELAWARE

VIRGINIA

WEST VIRGINIA

PENNSYLVANIA

MARYLAND

DELAWARE

VIRGINIA

WEST VIRGINIA

PENNSYLVANIA

MARYLAND

DELAWARE

VIRGINIA

WEST VIRGINIA

PENNSYLVANIA

MARYLAND

DELAWARE

VIRGINIA

WEST VIRGINIA

PENNSYLVANIA

MARYLAND

DELAWARE

VIRGINIA

WEST VIRGINIA

PENNSYLVANIA

MARYLAND

DELAWARE

VIRGINIA

WEST VIRGINIA

PENNSYLVANIA

MARYLAND

DELAWARE

VIRGINIA

WEST VIRGINIA

PENNSYLVANIA

MARYLAND

DELAWARE

VIRGINIA

WEST VIRGINIA

PENNSYLVANIA

MARYLAND

DELAWARE

VIRGINIA

WEST VIRGINIA

PENNSYLVANIA

MARYLAND

DELAWARE

VIRGINIA

WEST VIRGINIA

PENNSYLVANIA

MARYLAND

DELAWARE

VIRGINIA

WEST VIRGINIA

PENNSYLVANIA

MARYLAND

DELAWARE

VIRGINIA

WEST VIRGINIA

PENNSYLVANIA

MARYLAND

DELAWARE

VIRGINIA

WEST VIRGINIA

PENNSYLVANIA

MARYLAND

DELAWARE

VIRGINIA

WEST VIRGINIA

PENNSYLVANIA

MARYLAND

DELAWARE

VIRGINIA

WEST VIRGINIA

PENNSYLVANIA

MARYLAND

DELAWARE

VIRGINIA

WEST VIRGINIA

PENNSYLVANIA

MARYLAND

DELAWARE

VIRGINIA

WEST VIRGINIA

PENNSYLVANIA

MARYLAND

DELAWARE

VIRGINIA

WEST VIRGINIA

PENNSYLVANIA

MARYLAND

DELAWARE

VIRGINIA

WEST VIRGINIA

PENNSYLVANIA

MARYLAND

DELAWARE

VIRGINIA

WEST VIRGINIA

PENNSYLVANIA

MARYLAND

DELAWARE

VIRGINIA

WEST VIRGINIA

PENNSYLVANIA

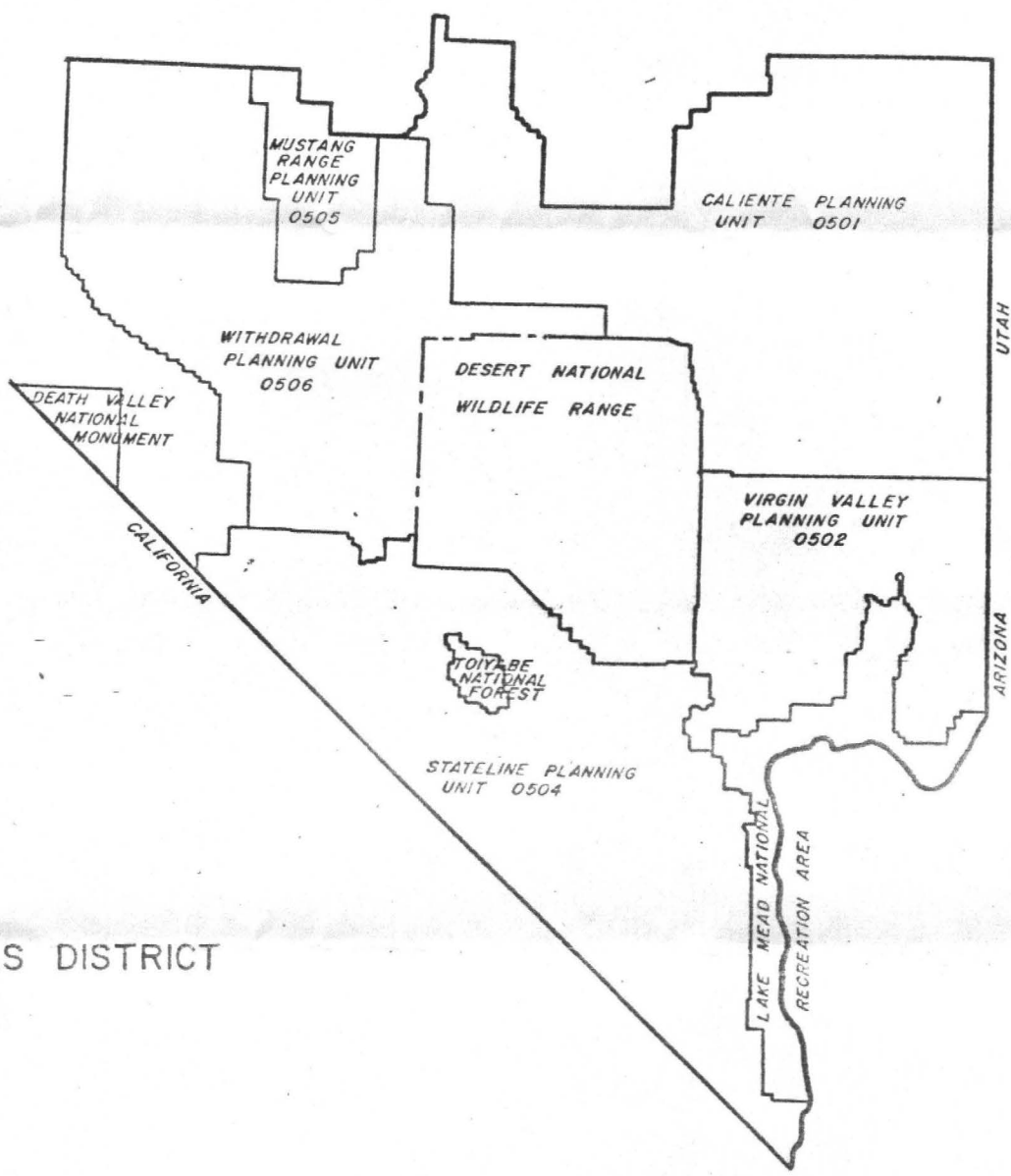
MARYLAND

DELAWARE

VIRGINIA

WEST VIRGINIA

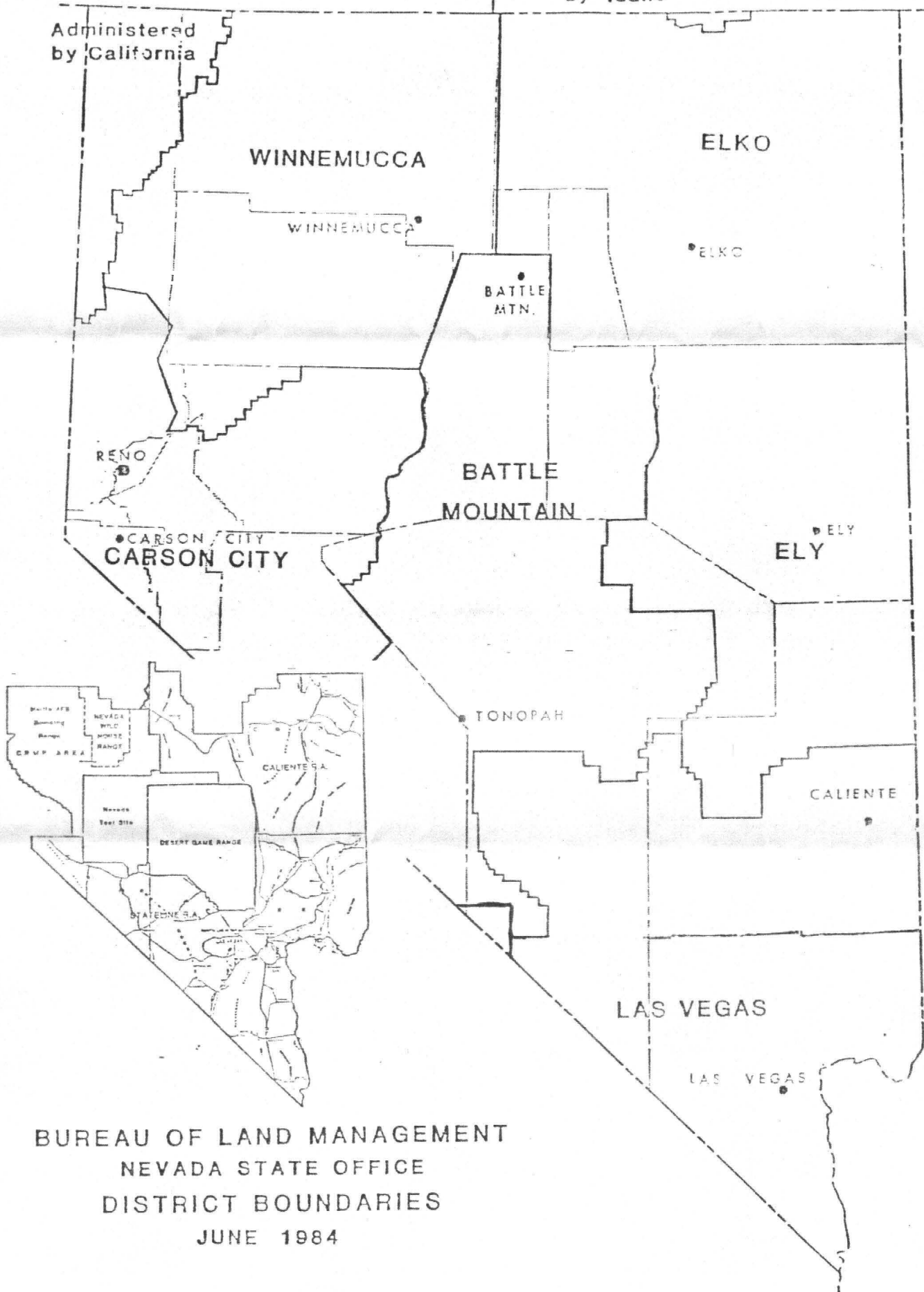
PENNSYLVANIA



LAS VEGAS DISTRICT

Administered
by Idaho

Administered
by California



BUREAU OF LAND MANAGEMENT
NEVADA STATE OFFICE
DISTRICT BOUNDARIES
JUNE 1984