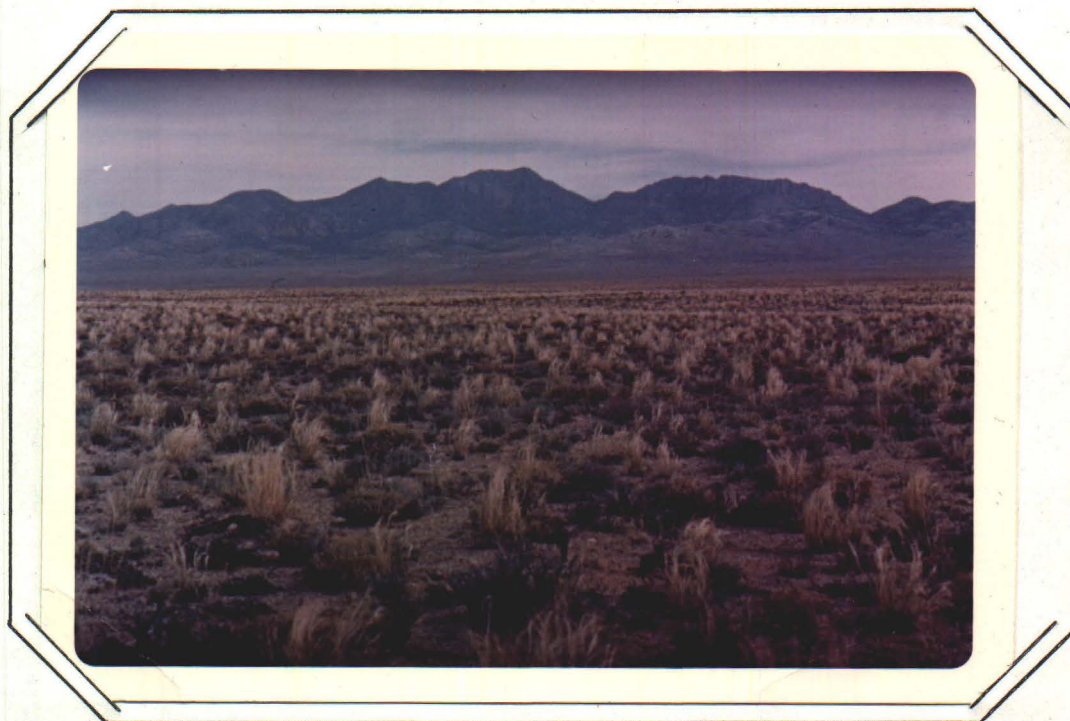




1. 4/29/65, Wild Horse Range. Benchland within one mile of water. Forage fully utilized. Low sagebrush type. Wild horses left center. Las Vegas Bombing Range.



2. 4/29/65. Wild Horse Range about 5 miles from water. Indian ricegrass, needlegrass and shrubs, principally shadscale. Little if any grazing in area for 20 to 30 years.



3. 4/29/65. Wild Horse Range about 8 miles from water. Indian ricegrass - spiny hop sage. Las Vegas Bombing Range withdrawal. Little if any grazing for 20 to 30 years. District Manager, Dennis E. Hess.



4. 4/29/65. Wild Horse Range about 8 miles from water. Indian ricegrass. Note vigor of grass in relation to that of remaining shrubby species. Average precipitation about 8" annually.