

MOUNT ROSE COURSE N^o 1

CONTACT PASS

ELEV. 9000

TRUCKEE RIVER BASIN

Present Cabin

E.P.-Dead Tamaracs
at Old Refuge Hut
Just Below Present
9000 Cabin. U.S.D.A.
Marker.

Meast #5, in
Middle of Group
of Small Trees

I.P.-Rock Mon.
4 High, 5' Diam. of "
Base. 6" Post With
U.S.D.A. Marker 12
Above Ground.

Situated in Middle
of Contact Pass.

Take Sample
No. 1 at 5' Pt. (N.)
of Monument.

Course Established Dec. 4, 1909.
U.S.D.A. Markers Placed Nov. 16, 1936.

True Bearings - V. $18\frac{1}{2}^{\circ}$ E.

Measurements Every 25 Ft. Beginning
at I.P. Monument.

Philip S. Corqill

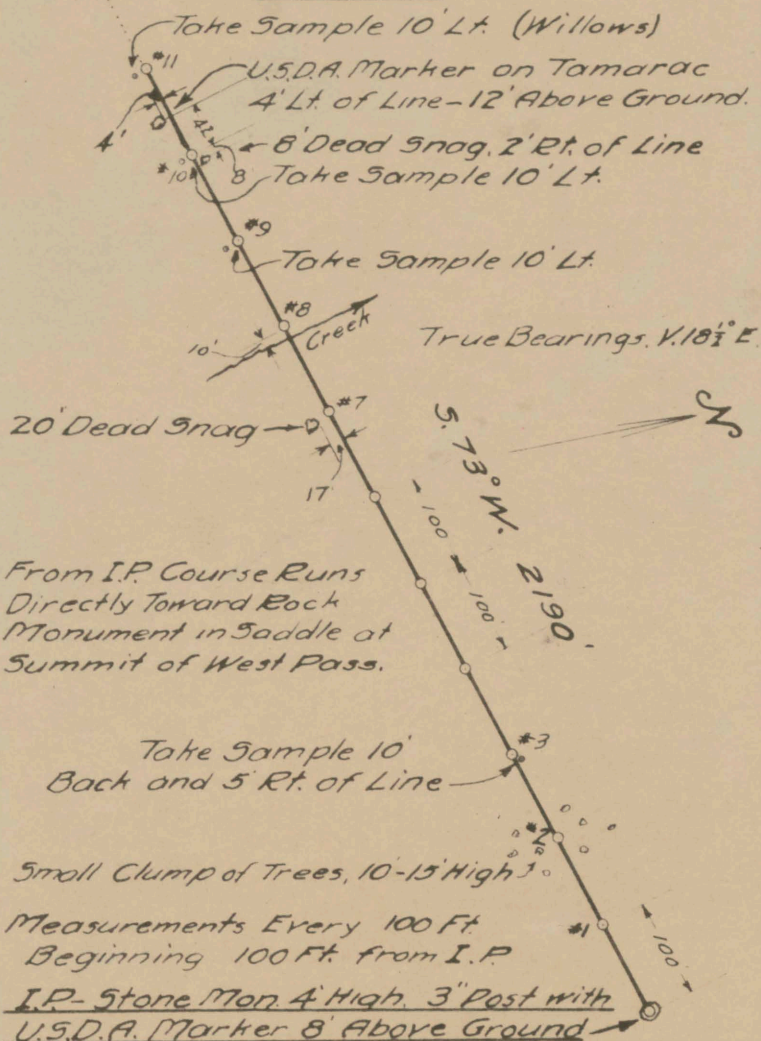
11-18-36



MOUNT ROSE COURSE NO 2 KENNEDY PASS TO ELKINS ISLAND

ELEV. 9500' +
TRUCKEE RIVER BASIN

Sheet #1

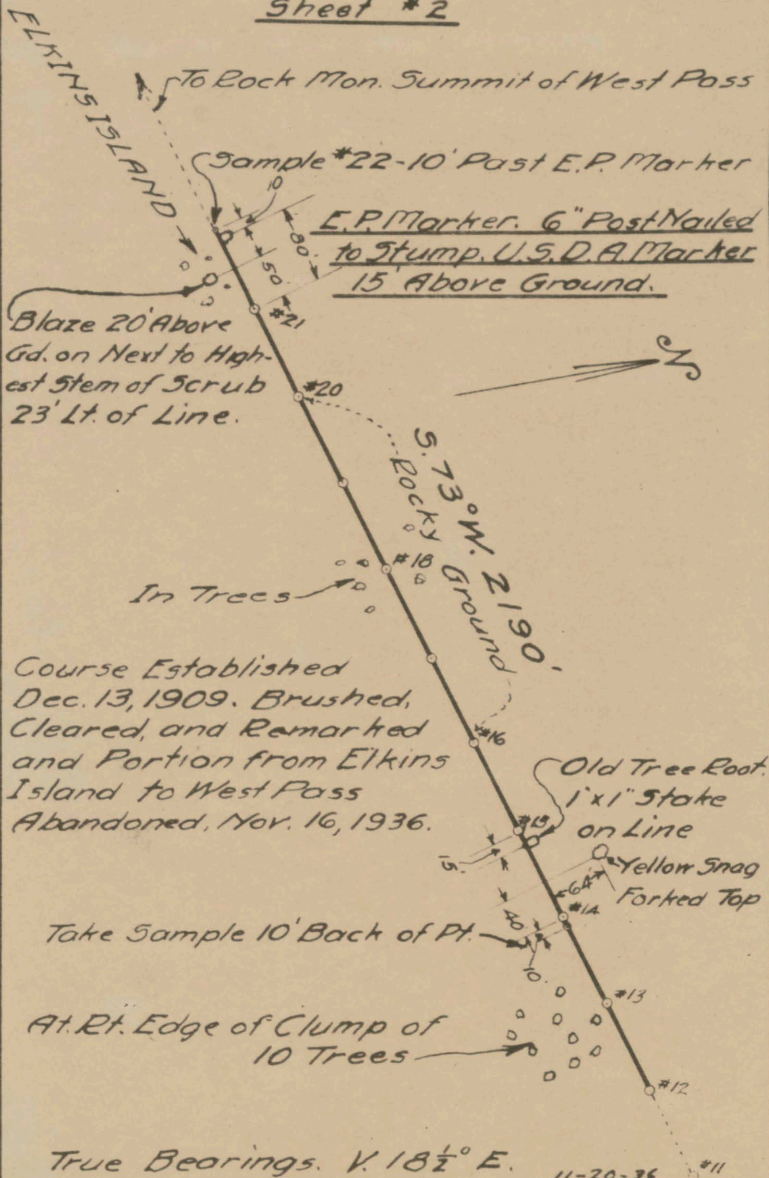


11-20-36

Philip S. Corngill

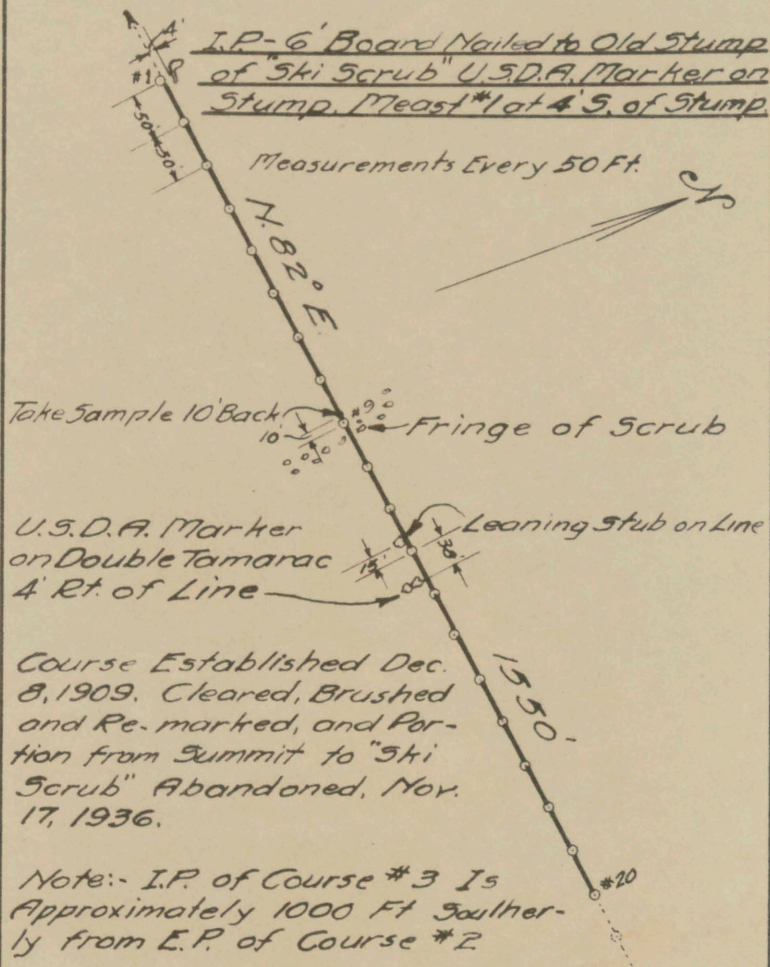
MOUNT ROSE COURSE NO. 2

Sheet #2



MOUNT ROSE COURSE N°3
"SKI SCRUB" TO GRANITE HILL

ELEV. 9500+
TRUCKEE RIVER BASIN
Sheet # 1



True Bearings. V. 18 1/2° E. Philip S. Congill.

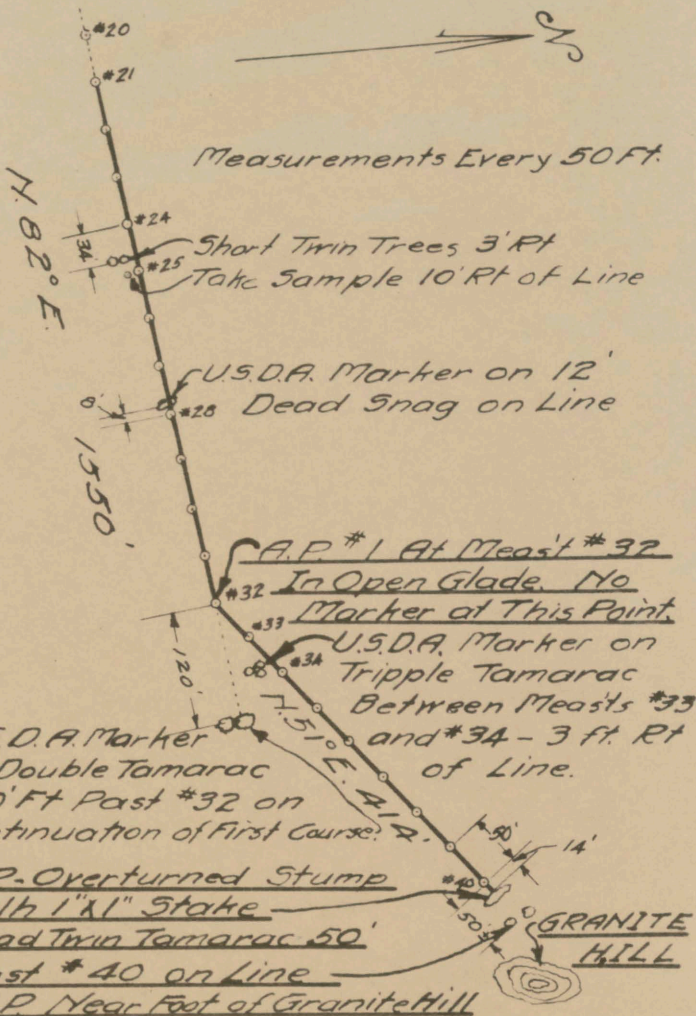
11-21-36

MOUNT ROSE COURSE No 3

Sheet # 2



Measurements Every 50 Ft.



True Bearings. $N. 18\frac{1}{2}^{\circ} E$ Philip S. Congill

11-21-36

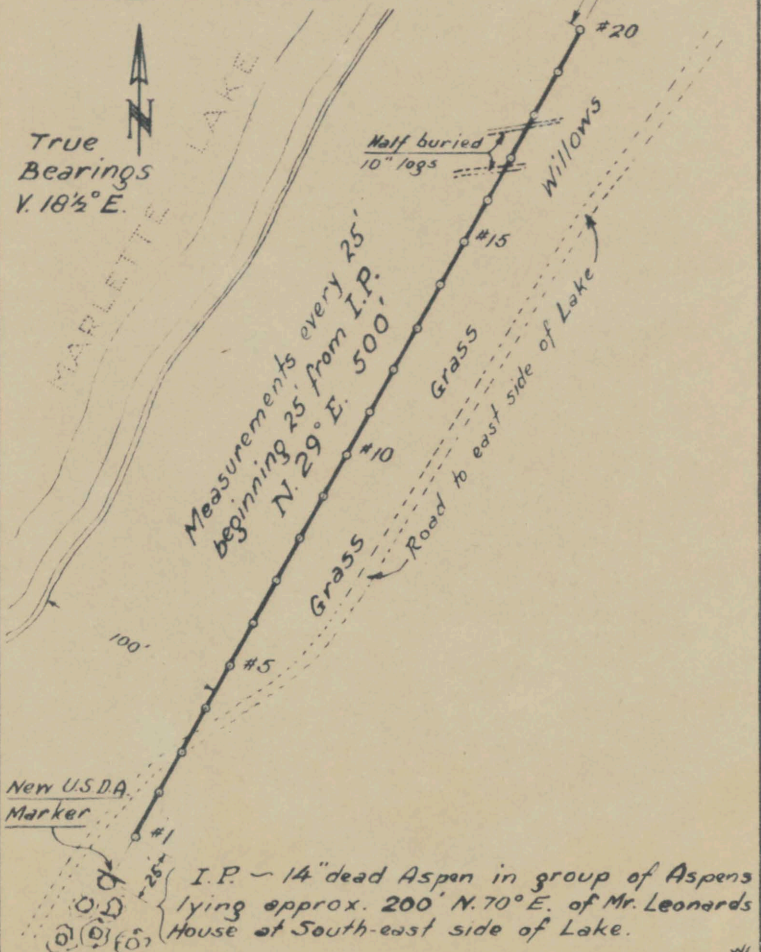
MARLETTE LAKE

COURSE N^o 1

ELEV. 8,000 FT.

20 MEASUREMENTS

TAHOE BASIN



11-23-36

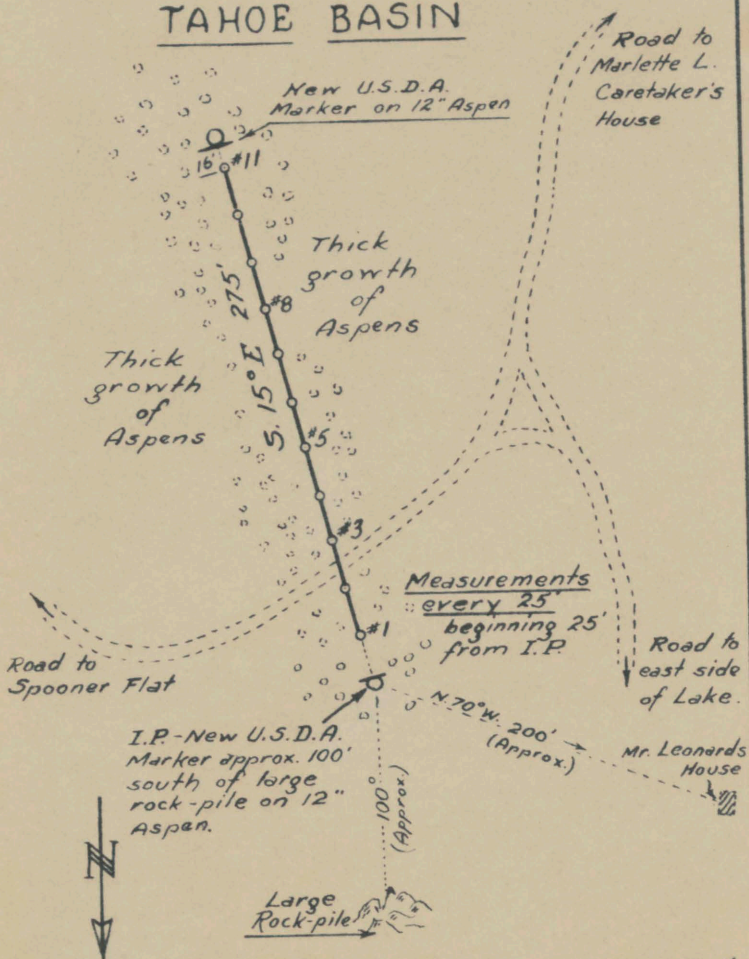
MARLETTE LAKE

COURSE N^o 2

ELEV. 8,000 FT.

II MEASUREMENTS

TAHOE BASIN



True Bearings $V. 18\frac{1}{2}^{\circ} E.$

MARLETTE LAKE

COURSE N^o 3

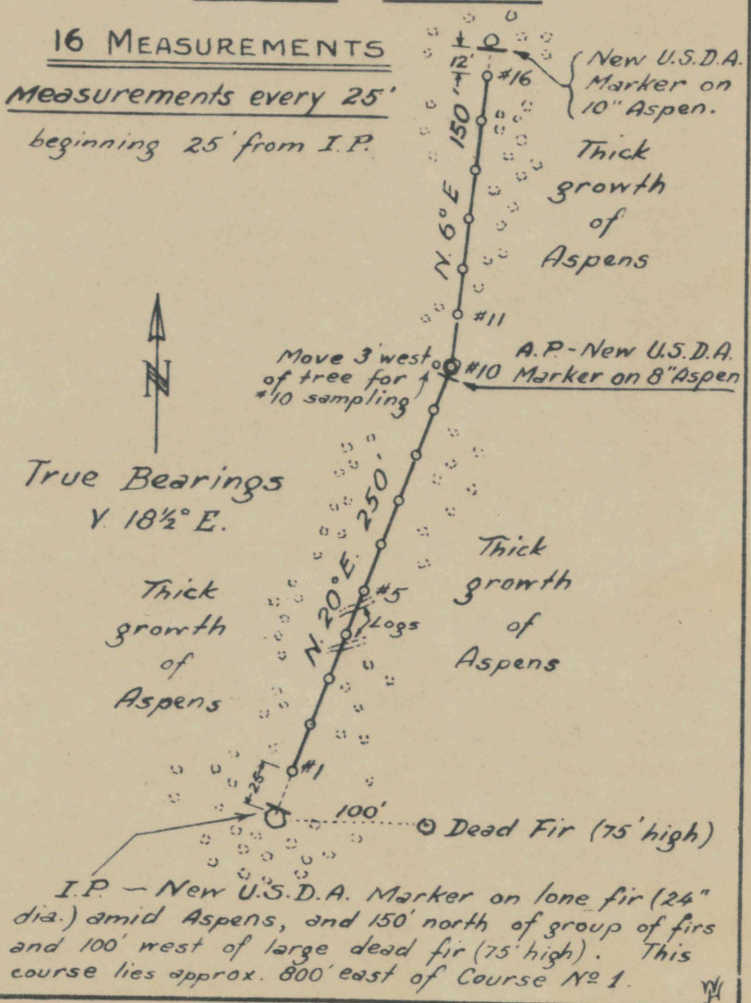
ELEV. 8,000 FT.

TAHOE BASIN

16 MEASUREMENTS

Measurements every 25'

beginning 25' from I.P.

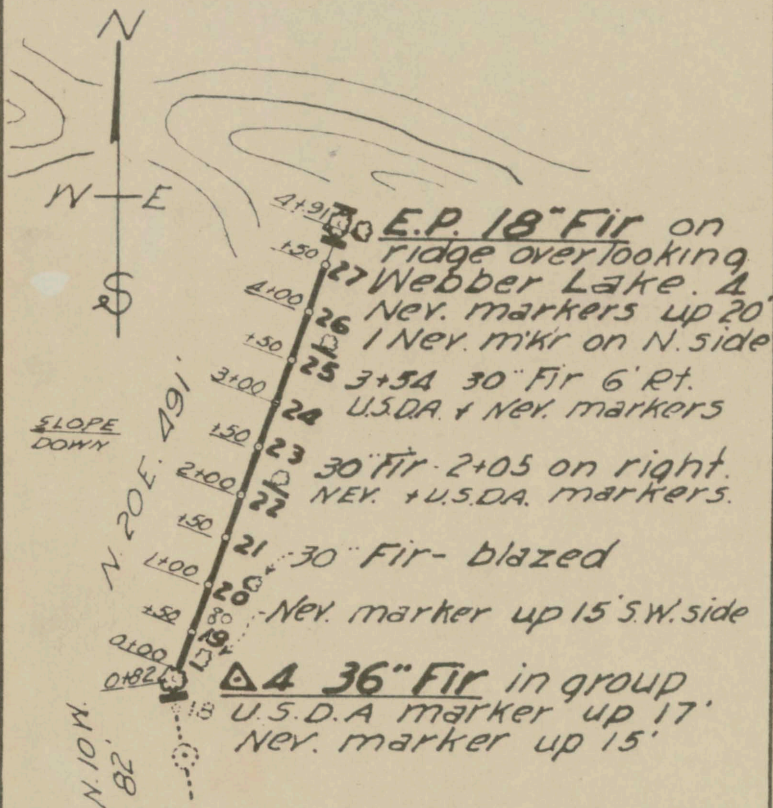


WEBBER PEAK - N^o 1

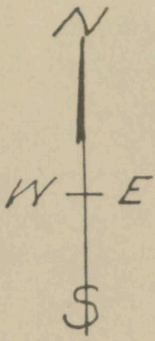
ELEVATION 8000
TRUCKEE RIVER BASIN

Samples to be taken every 50 FT.
as indicated by circles.

Course lies on summit of
Webber Peak. Soft earth bottom.



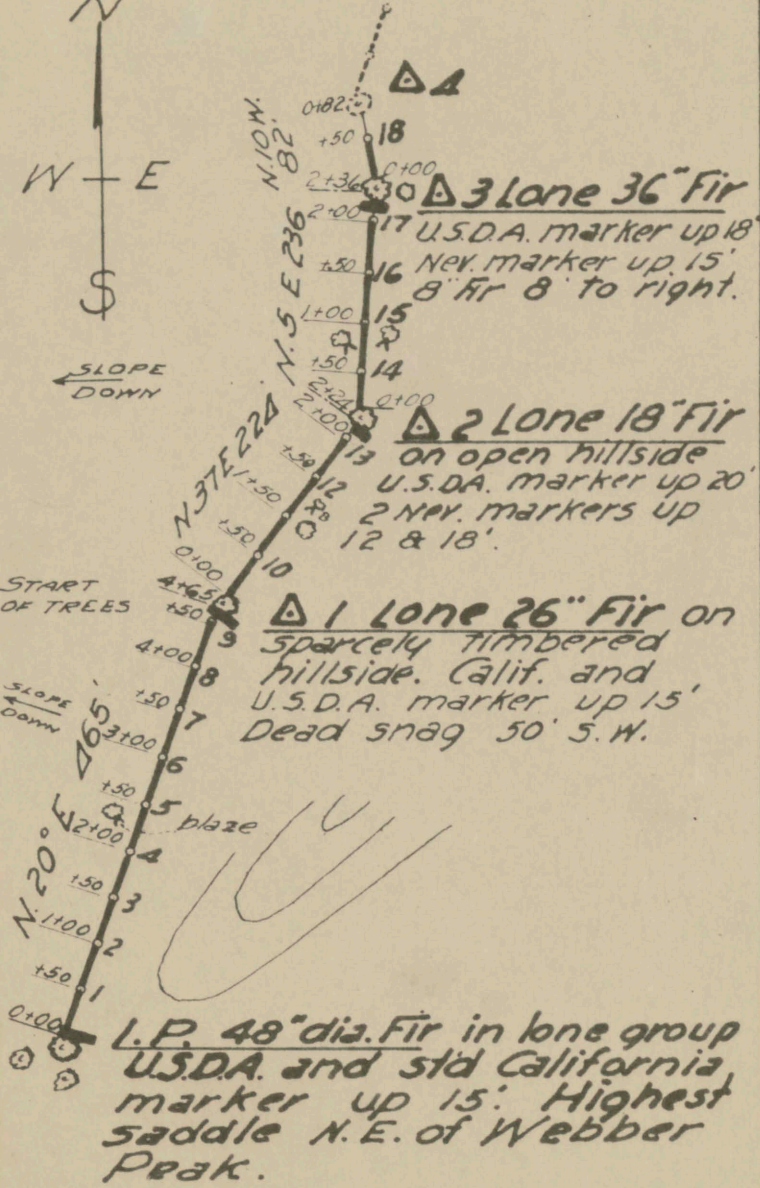
CONTINUED PG. 2



SLOPE DOWN

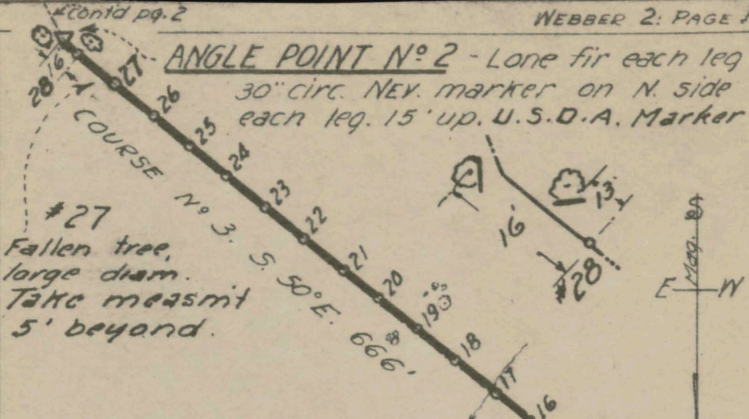
START OF TREES

SLOPE DOWN



1. P. 48" dia. Fir in lone group
 U.S.D.A. and std California
 marker up 15'. Highest
 saddle N.E. of Webber
 Peak.

ANGLE POINT N^o 2 - Lone fir each leg
 30" circ. NEV. marker on N. side
 each leg. 15' up. U.S.D.A. Marker



#27
 Fallen tree,
 large diam.
 Take measmt
 5' beyond.

ANGLE POINT N^o 1 is
 30" fir. NEV. marker 12' up.
 Tam. 8" diam. 6' S.
 U.S.D.A. marker

slope
 down

Small group firs & tams

40" tam. 5' W. of line. Triangle
 blaze on N. side.

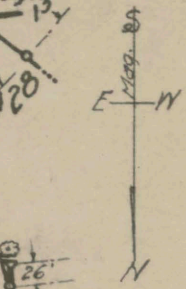
Samples 8 & 9 in small rocks

30" tam. 1' W. of line. NEV. marker
 15' up.

INITIAL POINT Lone twin fir
 S. leg 36" dia. N. leg 40" dia.
 Signs on S. leg: - One on E. and
 one on S. side 12' up. Lone 48"
 fir with large scar on E. side is
 25' W. of I.P. Group of 2 hemlocks
 24" & 20" diam. is S. 15'. U.S.D.A. mkr.

Marker tree is 36" Fir - dead top
 U.S.D.A. marker 20' up.

Group 2 Firs, 12", & 136" dia



COURSE
 S. 05° E. 776'

SAMPLE 1

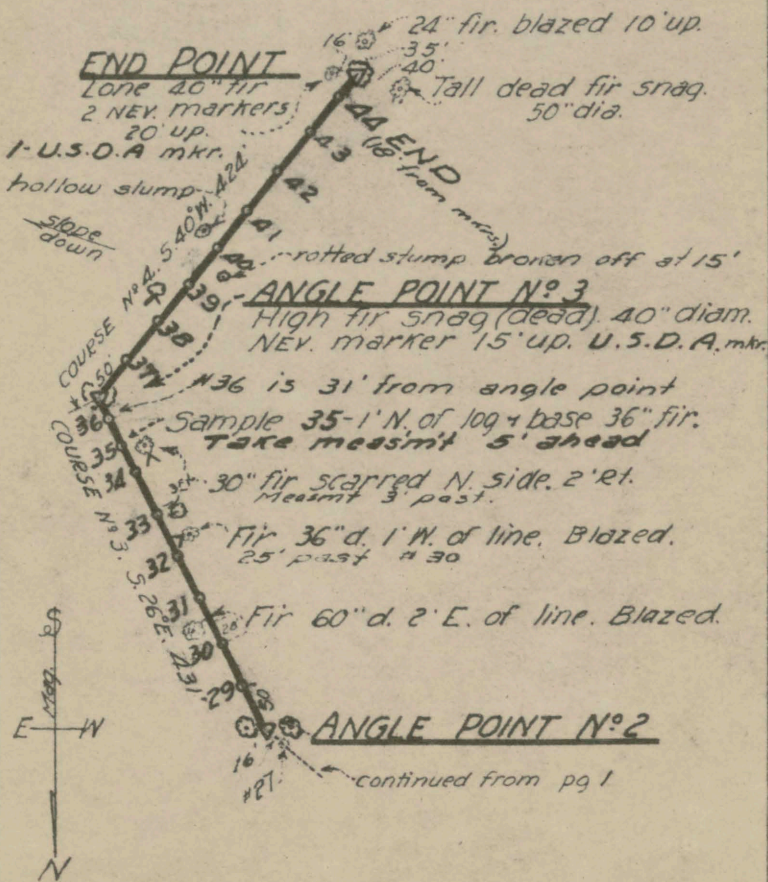
down

WEBBER LAKE COURSE N^o 2

ELEV. 6800'

TRUCKEE RIVER BASIN

Samples to be taken every 50 ft. as indicated by circles, - starting 50 ft. from I.P. and angle points, ~~except distance between samp. 26 + 27 and angle pt. 2 + samp. 28, each being 100 ft.~~
 Course on timbered side hill. Soft earth.



WEBBER LAKE N^o 2

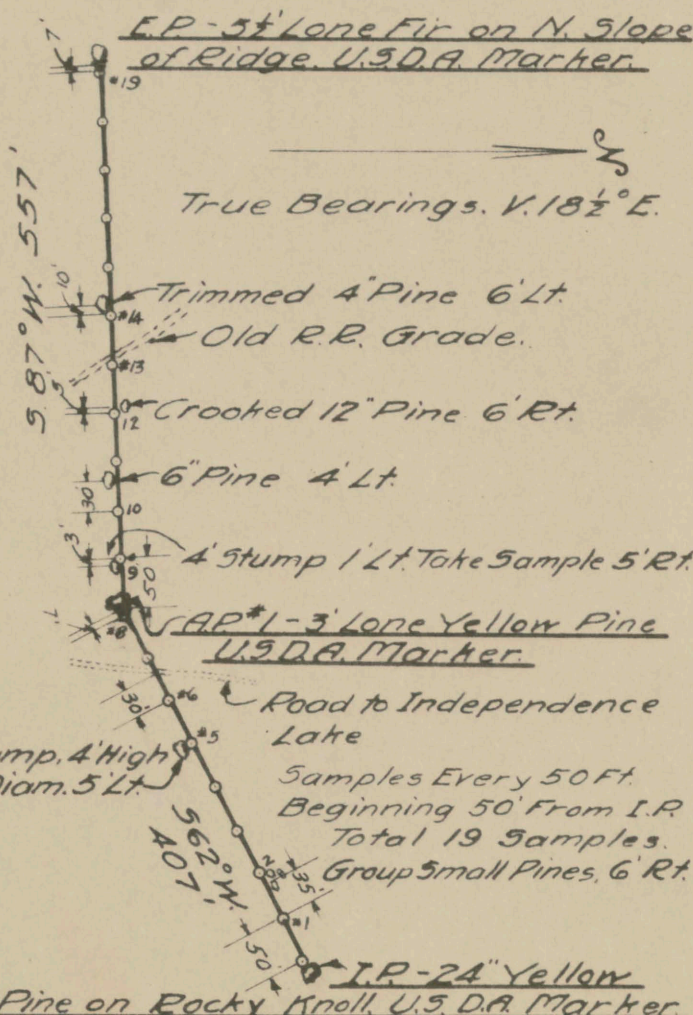
INDEPENDENCE CREEK COURSE

ELEV. 6500

TRUCKEE RIVER BASIN

Located Nov. 27, 1936, by Philip S. Cowgill

E.P.-5^t Lone Fir on N. Slope
of Ridge. U.S.D.A. Marker.



True Bearings. V. $18\frac{1}{2}^{\circ}$ E.

Trimmed 4" Pine 6' Lt.

Old R.R. Grade.

Crooked 12" Pine 6' Rt.

6" Pine 4' Lt.

4' Stump 1' Lt. Take Sample 5' Rt.

I.P.-1-3' Lone Yellow Pine
U.S.D.A. Marker.

Road to Independence
Lake

Samples Every 50 Ft.
Beginning 50' From I.P.
Total 19 Samples.
Group Small Pines, 6' Rt.

I.P.-24" Yellow
Pine on Rocky Knoll, U.S.D.A. Marker

Philip S. Cowgill - S.P.P. Co. 12-7-36.

INDEPENDENCE LAKE COURSE

ELEV. 8200

TRUCKEE RIVER BASIN

Located Dec. 3, 1936, by Philip S. Cowgill & T. J. Welsh.

E.P. - Double Hemlock, Lt. Lea 2' Diam.

Rt. Lea 3' Diam. 5th. Calif. Marker

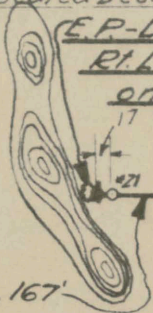
on Lt. Lea Hemlock

AP#3 - 15" Pine, 5th. Cal. Mkr.

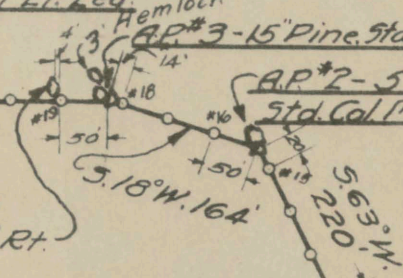
AP#2 - 5' Pine

5th. Cal. Marker.

Ridge
Rocky Points



South, 167'
2' Hemlock 4' Rt.

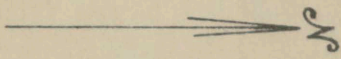


AP#1 - 2 1/2' Pine, 5th. Cal. Marker

Sample #11 - 10 Lt. of A.P.

2' Pine, 6' Lt.

18" Pine, 6' Lt.



4' Hemlock, 5' Lt.

3' Fir, 5' Lt.

4' Hemlock, 5' Lt.

4' Pine 3' Rt.

Samples Every 50', Beginning
50' From I.P. Total 21 Samples

Rocky Knoll



I.P. 3' Fir, 5th. Cal. Marker

200' North of Rocky Knoll

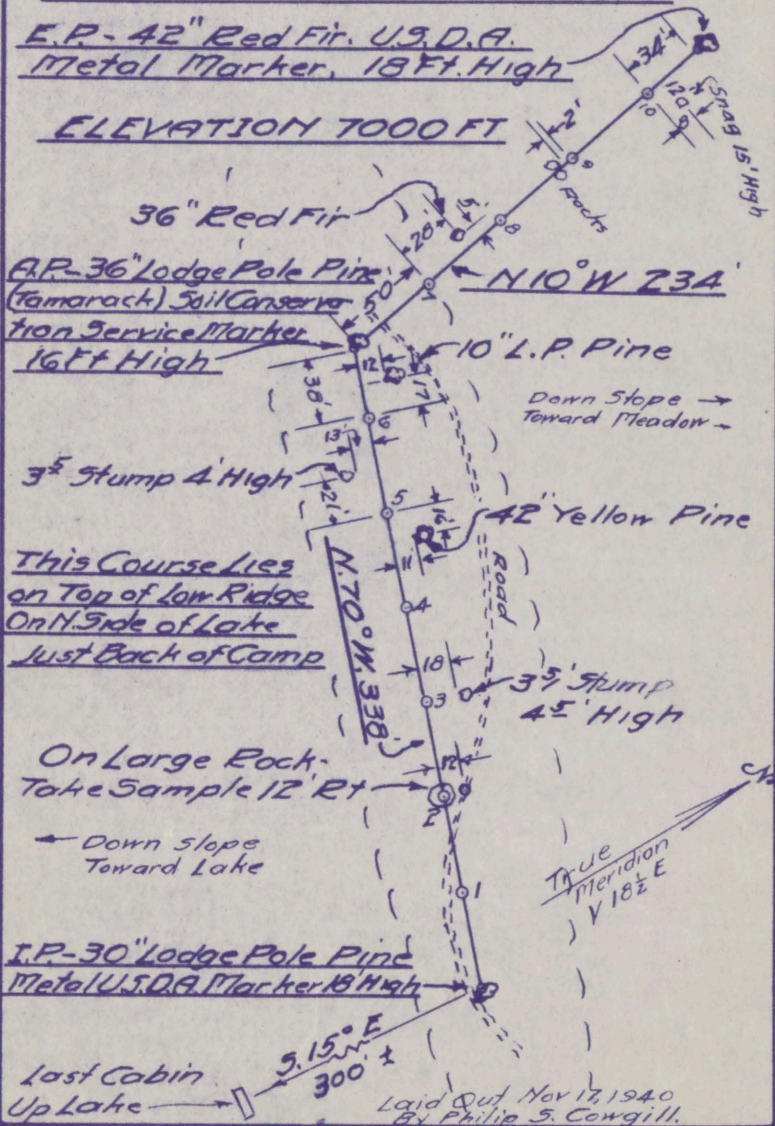
True Bearings. $V. 18 \frac{1}{2}^{\circ} E.$

West, 548'

INDEPENDENCE CAMP SNOW SURVEY COURSE TRUCKEE RIVER BASIN

E.P. - 42" Red Fir, U.S.D.A.
Metal Marker, 18 Ft. High

ELEVATION 7000 FT



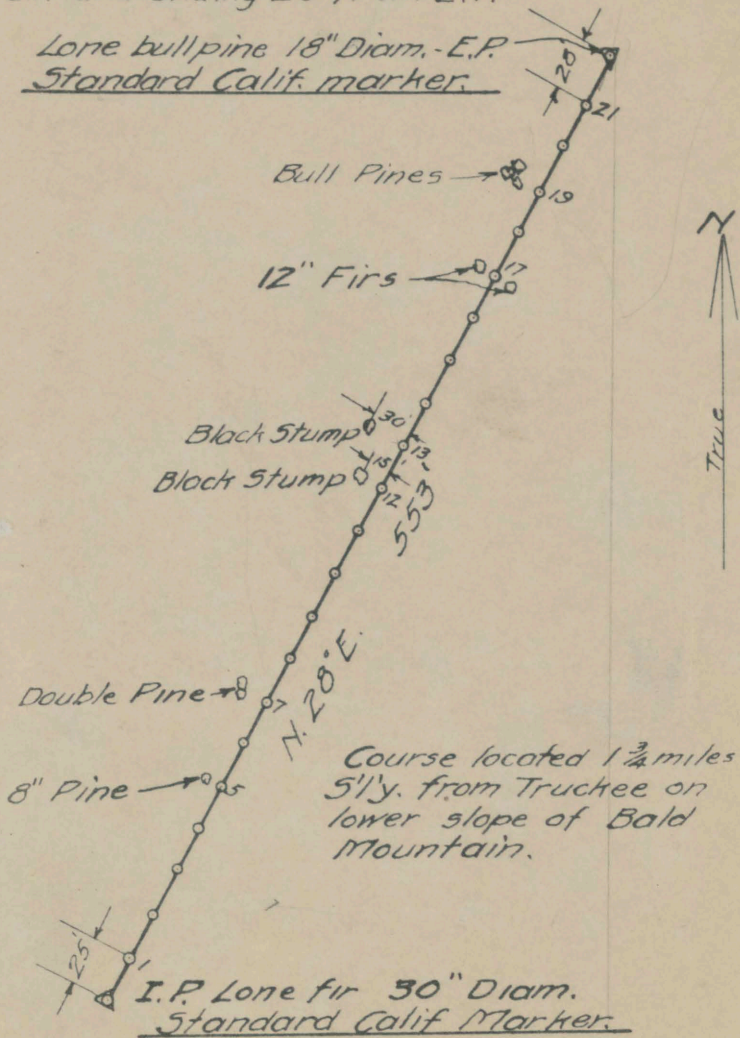
TRUCKEE COURSE NO 2

ELEV. 6400

TRUCKEE RIVER BASIN

Samples taken every 25', starting 25' from I.P. and ending 28' from E.P.

Lone bull pine 18" Diam. - E.P.
Standard Calif. marker.



Course located $1\frac{3}{4}$ miles S'y. from Truckee on lower slope of Bald Mountain.

I.P. Lone fir 30" Diam.
Standard Calif Marker.

Located 3-23-30. Shaver, Welsh, Elsie, Small

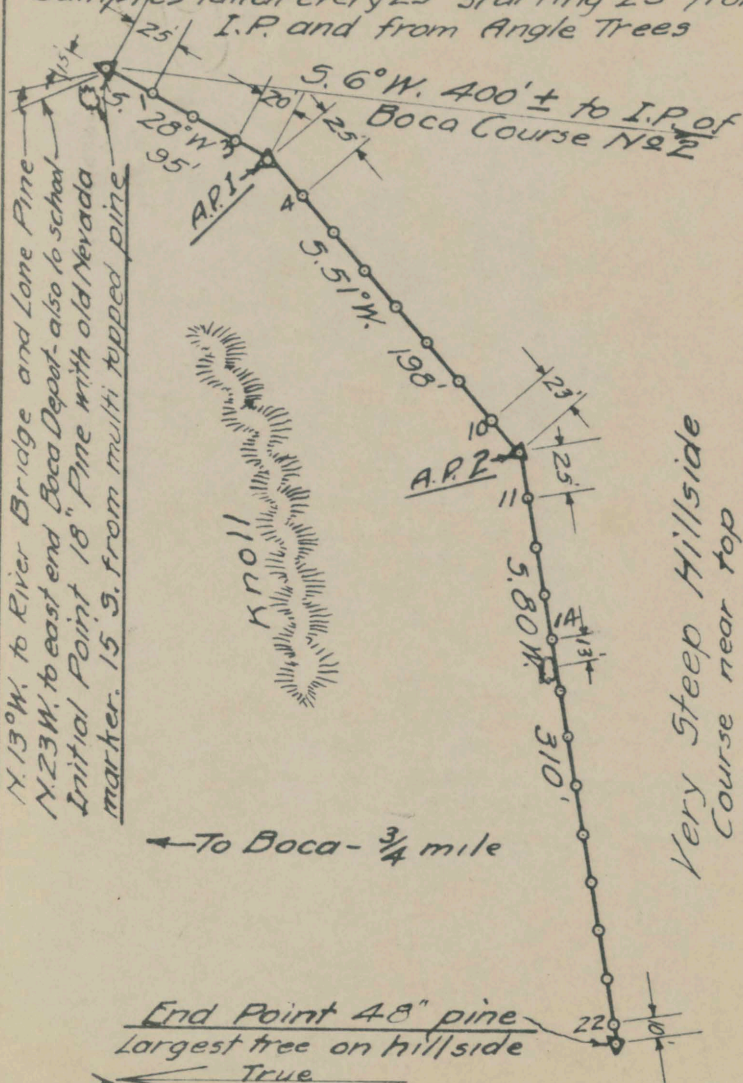
TRUCKEE NO 2

BOCA COURSE No 1

ELEV. 5850

TRUCKEE RIVER BASIN

Samples taken every 25' starting 25' from I.P. and from Angle Trees



N. 13° W. to River Bridge and Lane Pine
N. 23° W. to east end Boca Depot also to school
Initial Point 18" Pine with old Nevada
marker. 15 S. from multi topped pine

← To Boca - $\frac{3}{4}$ mile

End Point 48" pine
Largest tree on hillside
True

Very Steep Hillside
Course near top

BOCA No 1

Located by Shaver and party. (Date ?)

PHILIP S. COWGILL, S.P.P. CO. 2-21-33.

BOCA COURSE NO 2

ELEV. 6000

TRUCKEE RIVER BASIN

Samples taken every 50' starting 50' from I.P. and from A.P. Last sample 10' from E.P.
N. 6° E, 400' ± from I.P. of Boca Course No 1

I.P. 22" Pine with U.S.D.A. marker



Course located $\frac{3}{4}$ mile ±, S'y. from Boca and $\frac{3}{4}$ mile ±, N.W'y. from Hirschdale on top of high flat plateau.

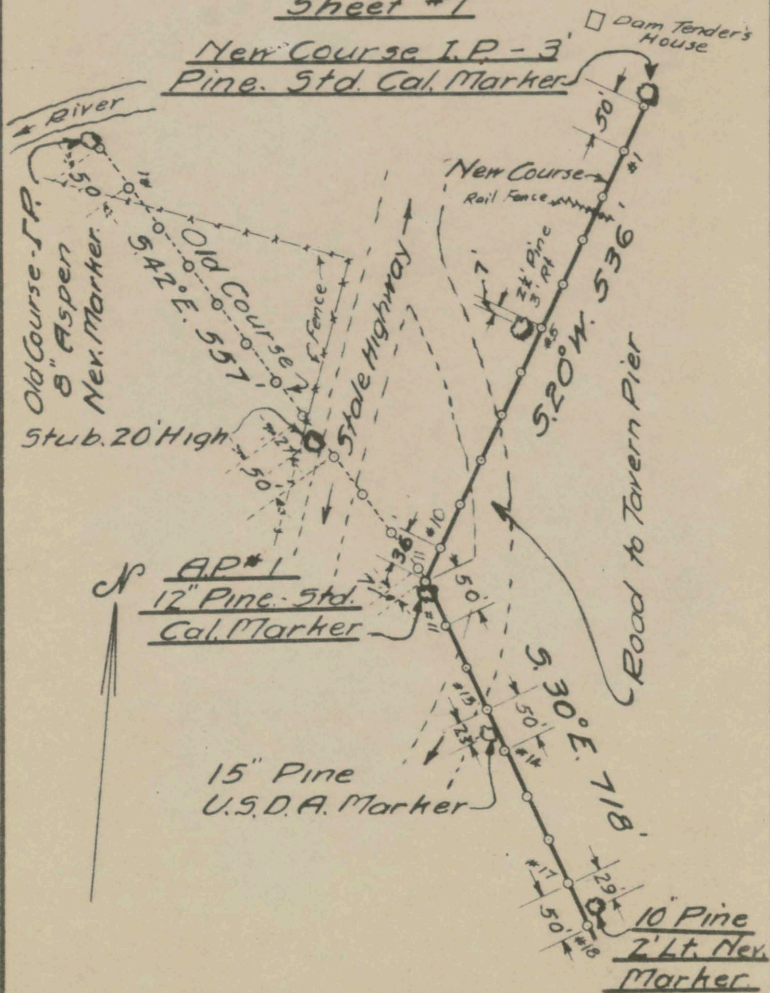
Located 11-27-32. Cowgill & H.P. Boardman.

TAHOE CITY "TAVERN" SNOW SURVEY COURSE

ELEV. 6250

TRUCKEE RIVER BASIN

Sheet #1



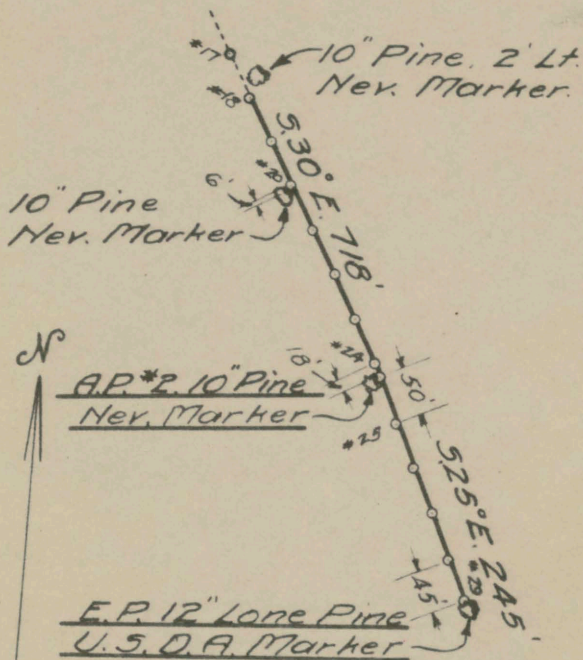
True Bearings. $V. 18\frac{1}{2}^{\circ} E.$

Philip S. Cowgill

11-10-36

TAHOE CITY "TAVERN" SNOW SURVEY COURSE

Sheet # 2



Note: From I.P.'s to A.P. #1 on Old Course, S.P.R. Co. Sub. Sta. and State Highway Have Encroached on Course Rendering This Portion Valueless. New Portion Located Nov. 1936. This Portion Should Show Little Difference from Original.

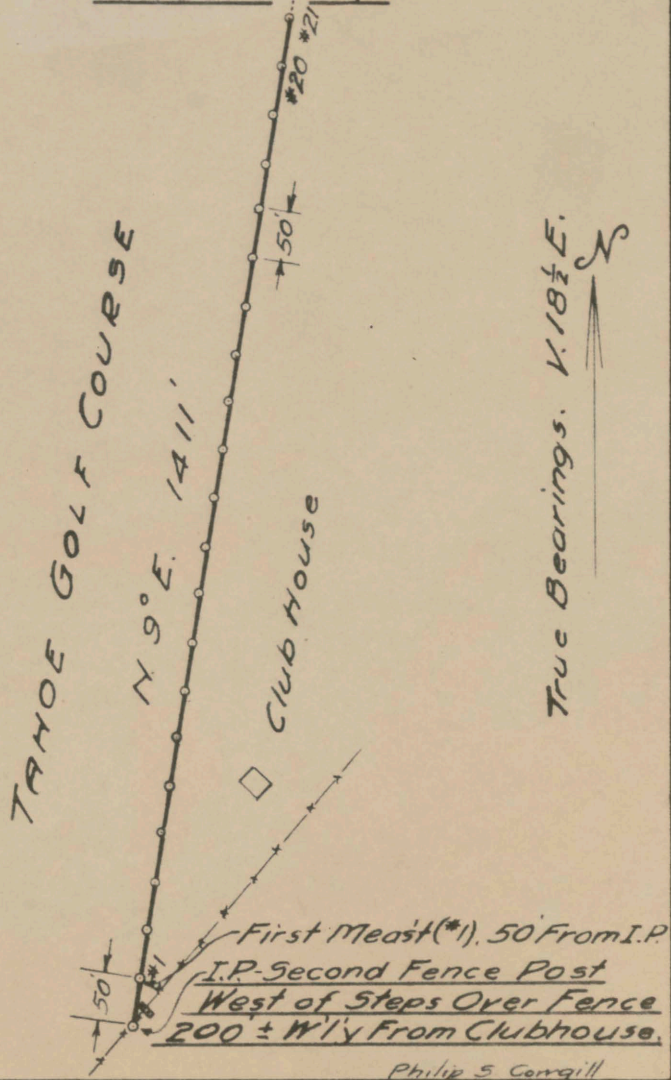
True Bearings. $V. 18\frac{1}{2}^{\circ} E.$ 11-10-36
Philip S. Corrigill

TAHOE CITY "GOLF COURSE" SNOW SURVEY COURSE

ELEV. 6250

TRUCKEE RIVER BASIN

Sheet *1



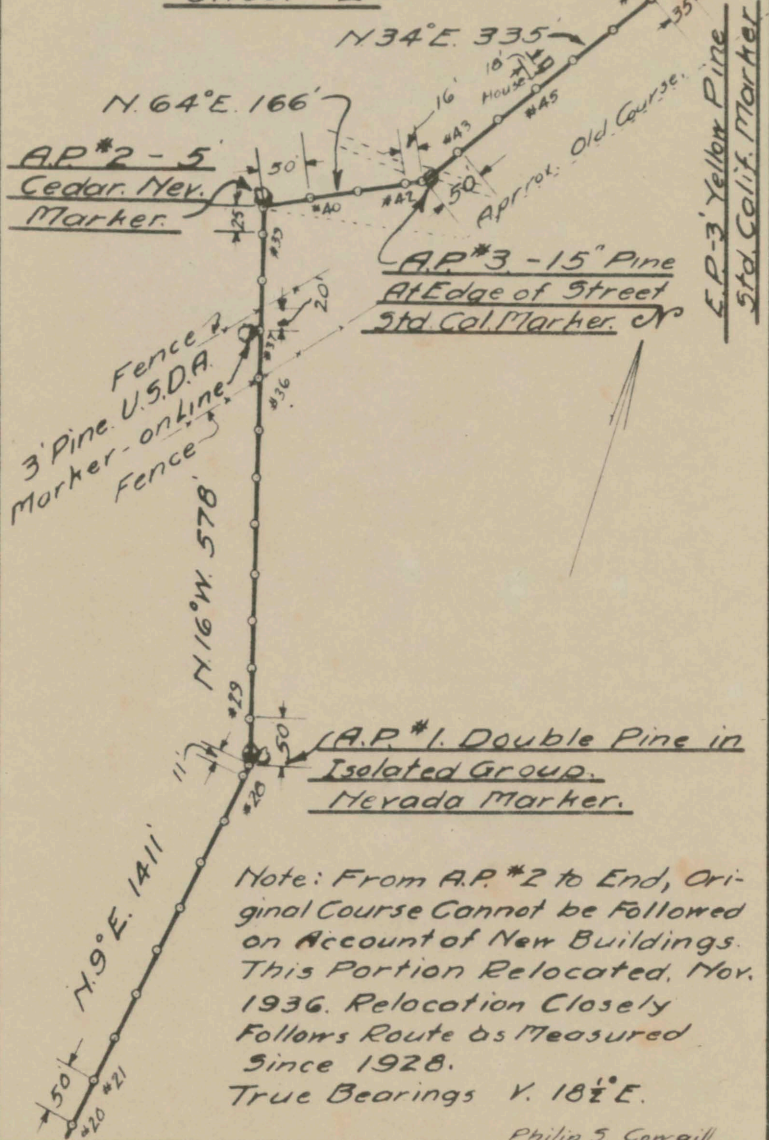
Philip S. Congill

11-9-36

TAHOE CITY "GOLF COURSE"

SNOW SURVEY COURSE

Sheet #2



A.P. #1. Double Pine in Isolated Group.
Nevada Marker.

Note: From A.P. #2 to End, Original Course Cannot be Followed on Account of New Buildings. This Portion Relocated, Nov. 1936. Relocation Closely Follows Route as Measured Since 1928.
True Bearings $N. 18\frac{1}{2}^{\circ} E.$

Philip S. Cowgill
11-9-36

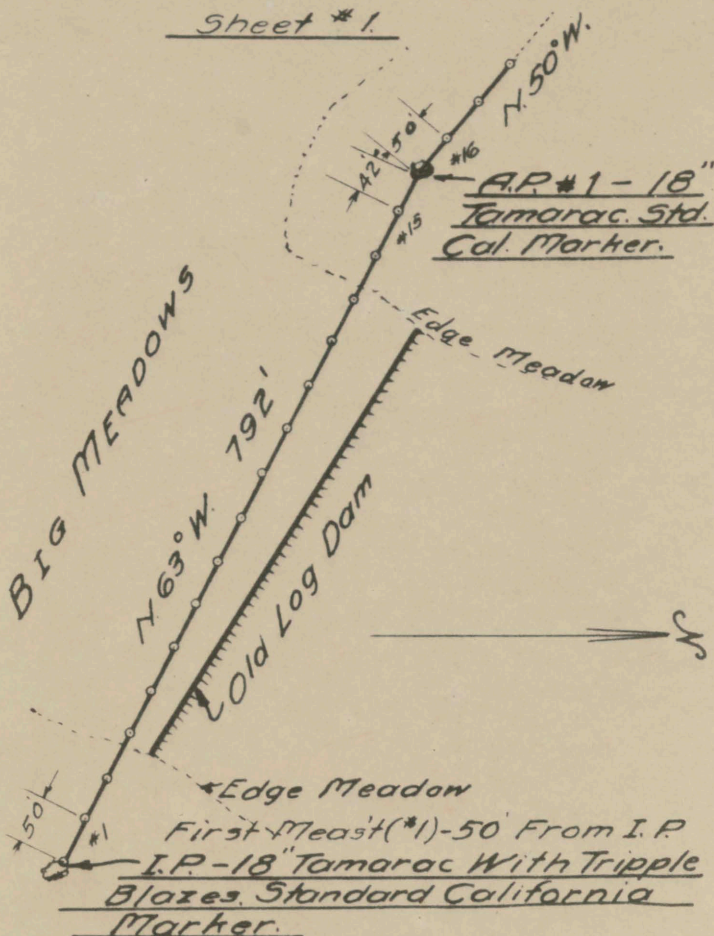
BIG MEADOWS COURSE

ELEV. 8800

TRUCKEE RIVER BASIN

Samples Taken Every 50 Ft. Starting
50 Ft. from I.P. and A.P's.

Sheet #1.



Course Located $1\frac{3}{4}$ Miles Westerly
from Hunter Lake.

True Bearings. $N. 18\frac{1}{2}^{\circ} E.$

Philip S. Gorgill

11-12-36

BIG MEADOWS COURSE

Sheet # 2

E.P. - Measurement No 38

5' Past 30" Tamarac
with Std. Cal. Marker.

N. 38° W. 200'

A.P. # 2

24" Tamarac

Tripple Blaze -

Nevada Marker.

Edge of Meadow

N. 50° W. 965'
Thick Trees.
Well Blazed

Line Tree - 8" Tamarac
U.S.D.A. Marker.

Thicket of Small Trees

A.P. # 1 - 18" Tamarac - Std
Calif. Marker.

True Bearings. V. 18½° E.

Philip S. Corngill

11-12-36

GRANITE PEAK COURSE

ELEV. 8200

TRUCKEE RIVER BASIN

Measurements Every 50' Starting 50' from I.P. and A.P.'s.

E.P. - 3 1/2' Red Fir. U.S.D.A. Marker

12" Pine 4' Lt. of Line. U.S.D.A. Marker

True Bearings
V. $18\frac{1}{2}^{\circ}$ E.

*15 - Sample 5'
Ahead & 5' Lt.

A.P. #3 - 10" Pine U.S.D.A. Marker
*14 Sample 2' Ahead

A.P. #2 at Meast #9

Dead Stub. - 4' Diam. 20' High
Lt. Edge on Line. U.S.D.A. Marker

3' Pine - 3' Rt of Line

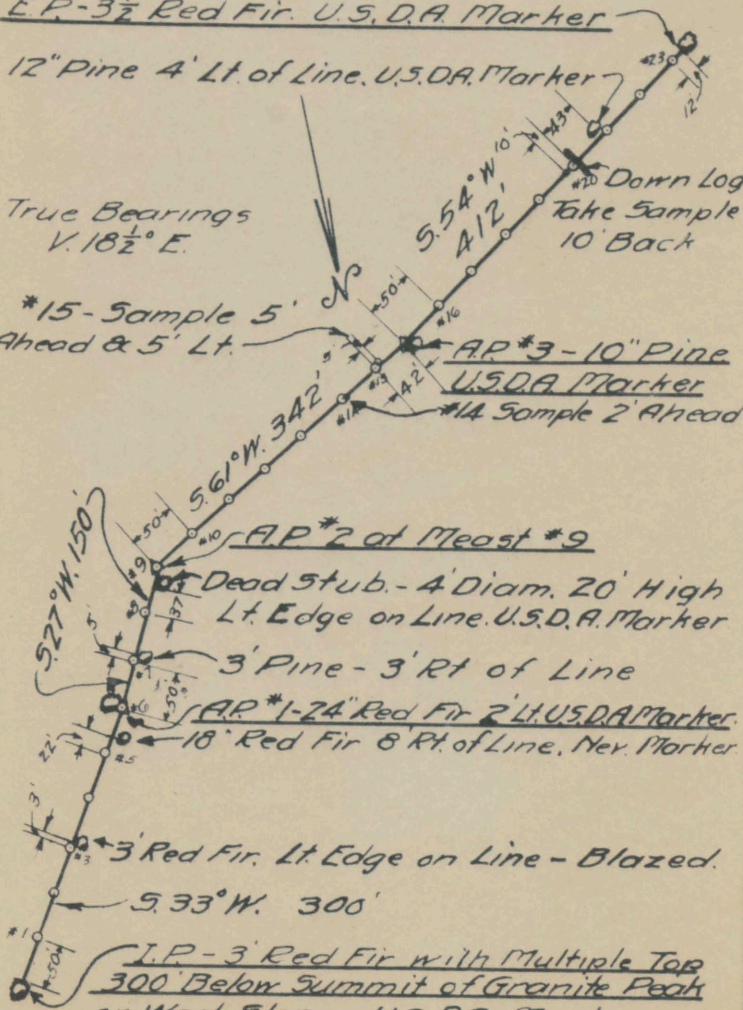
A.P. #1 - 24" Red Fir 2' Lt. U.S.D.A. Marker.

18" Red Fir 8' Rt. of Line. Nex. Marker

3' Red Fir. Lt. Edge on Line - Blazed.

5.33° W. 300'

I.P. - 3' Red Fir with Multiple Top
300' Below Summit of Granite Peak
on West Slope. U.S.D.A. Marker.

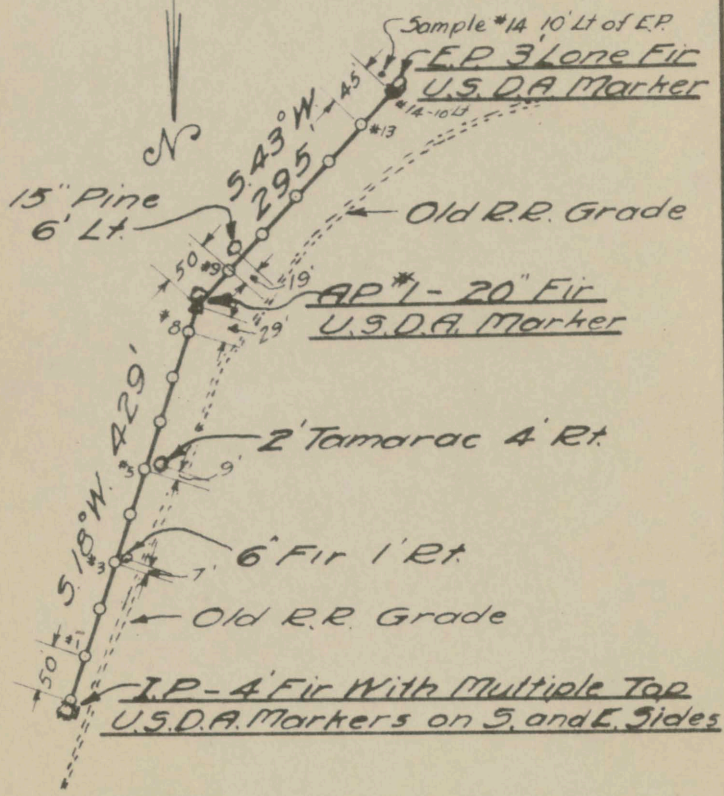


SAGE HEN CREEK COURSE

ELEV. 6500

TRUCKEE RIVER BASIN

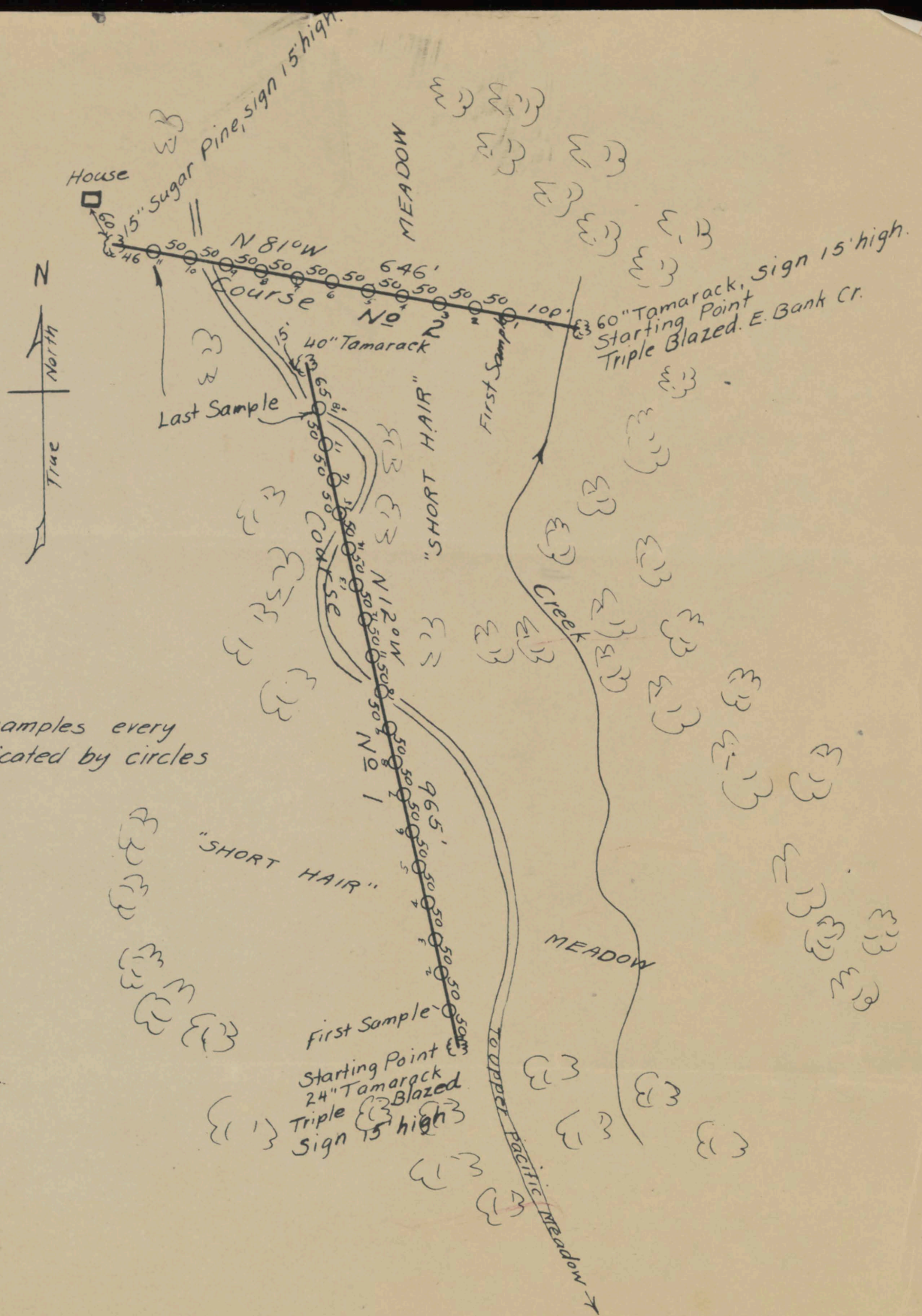
Samples Every 50 Ft.
Beginning 50' From I.P.
Total 14 Samples



Located Nov. 24, 1936, by Philip S. Cowgill.

True Bearings. $V. 18\frac{1}{2}^{\circ} E.$

Philip S. Cowgill - S.P.R.Co. 12-7-36



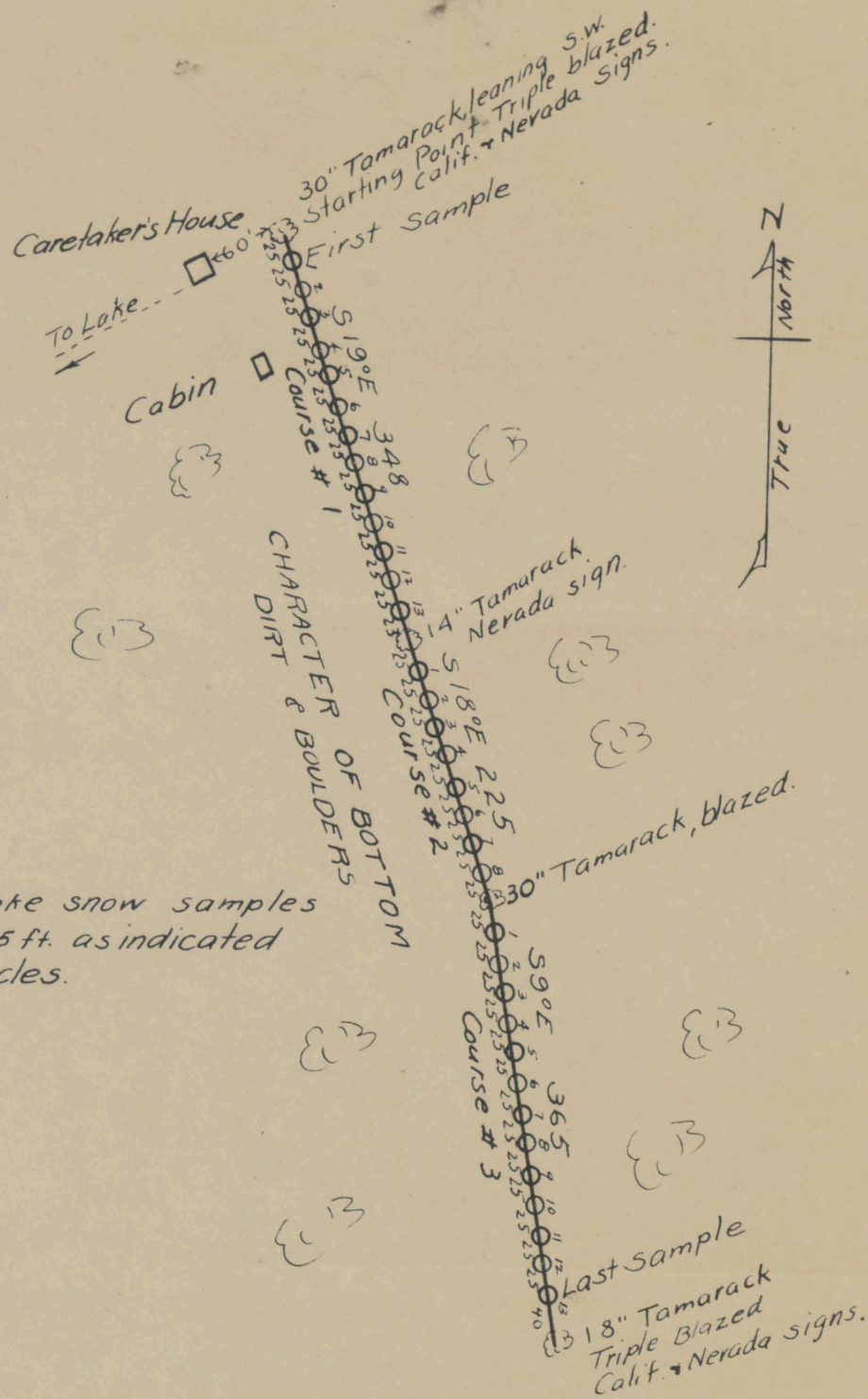
Note:
 Take snow samples every
 50 ft. as indicated by circles

CALIFORNIA COOPERATIVE SNOW SURVEYS

"PACIFIC VALLEY" COURSE

MOKELUMNE RIVER BASIN

APPROX. ELEV. 7500



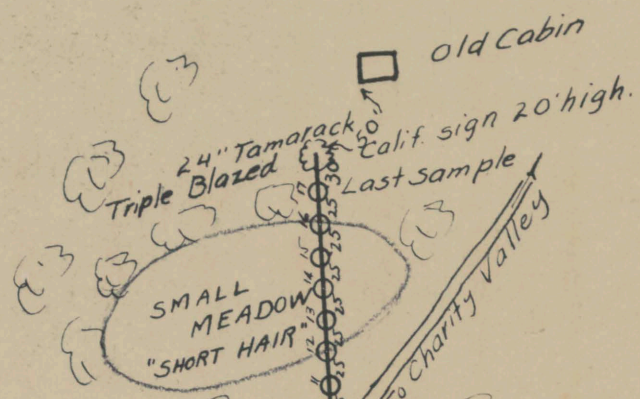
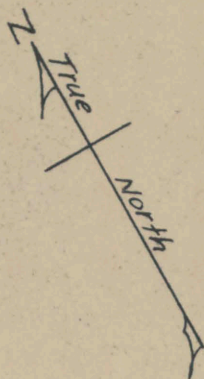
Note: Take snow samples every 25 ft. as indicated by circles.

CALIFORNIA COOPERATIVE SNOW SURVEYS

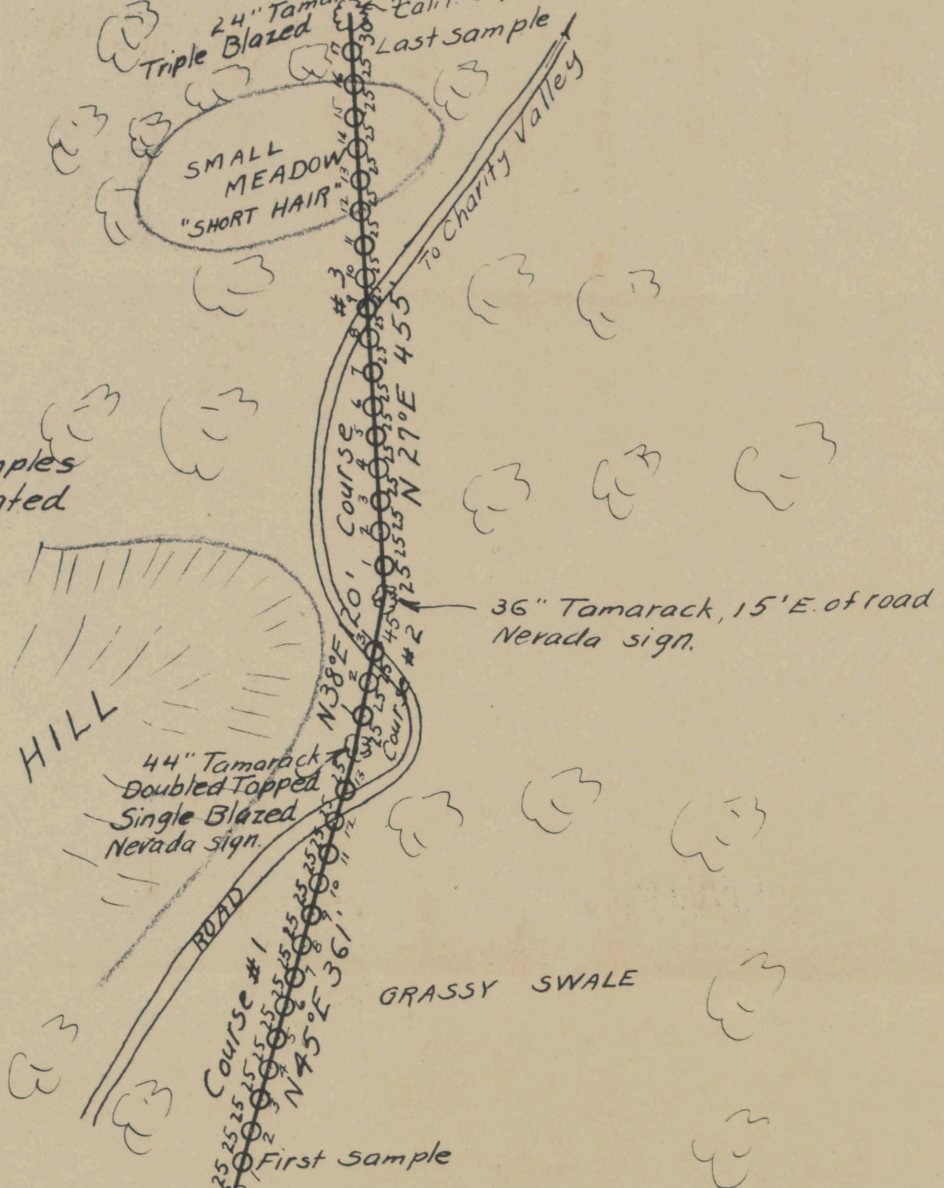
"BLUE LAKES" COURSE NO 1

APPROX. ELEV. 8000

MOKELUMNE RIVER BASIN



Note: Take snow samples every 25 ft. as indicated by circles.



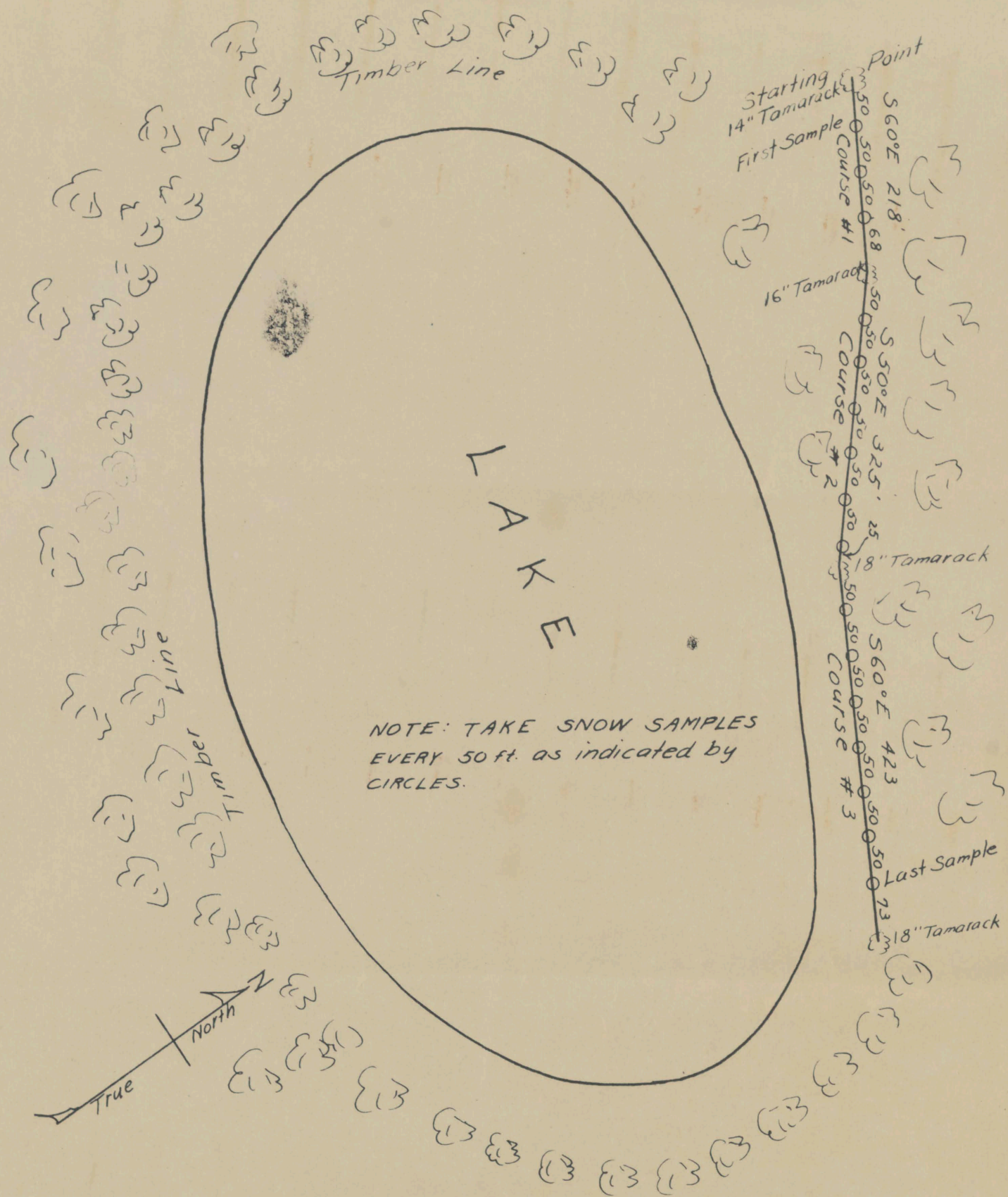
Calif. sign 20' Starting Point
 Nevada " 15' high 36" Tamarack
 Triple blazed
 500' N. of keepers house

CALIFORNIA COOPERATIVE SNOW SURVEYS

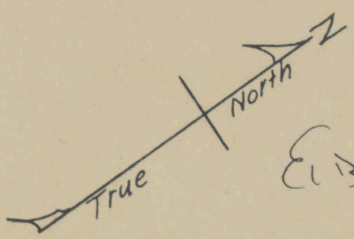
MOKELUMNE RIVER BASIN

"BLUE LAKES" COURSE NO 2

APPROX. ELEV. 8000



NOTE: TAKE SNOW SAMPLES EVERY 50 ft. as indicated by CIRCLES.



CALIFORNIA COOPERATIVE SNOW SURVEYS

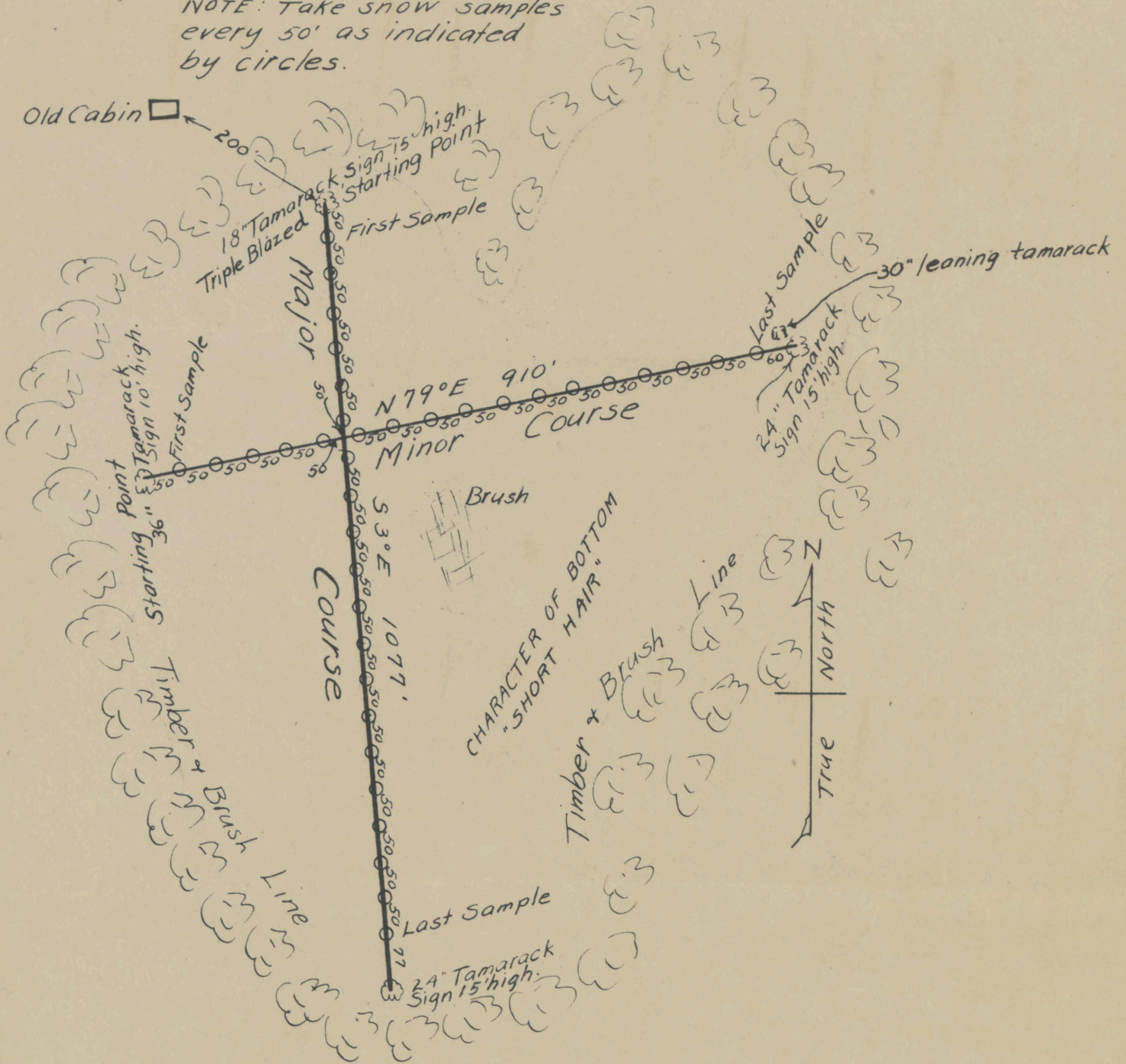
EAST FORK CARSON RIVER BASIN

"BURNSIDE LAKE" COURSE NO 1

APPROX. ELEV. 8000

10-5-29

NOTE: Take snow samples every 50' as indicated by circles.



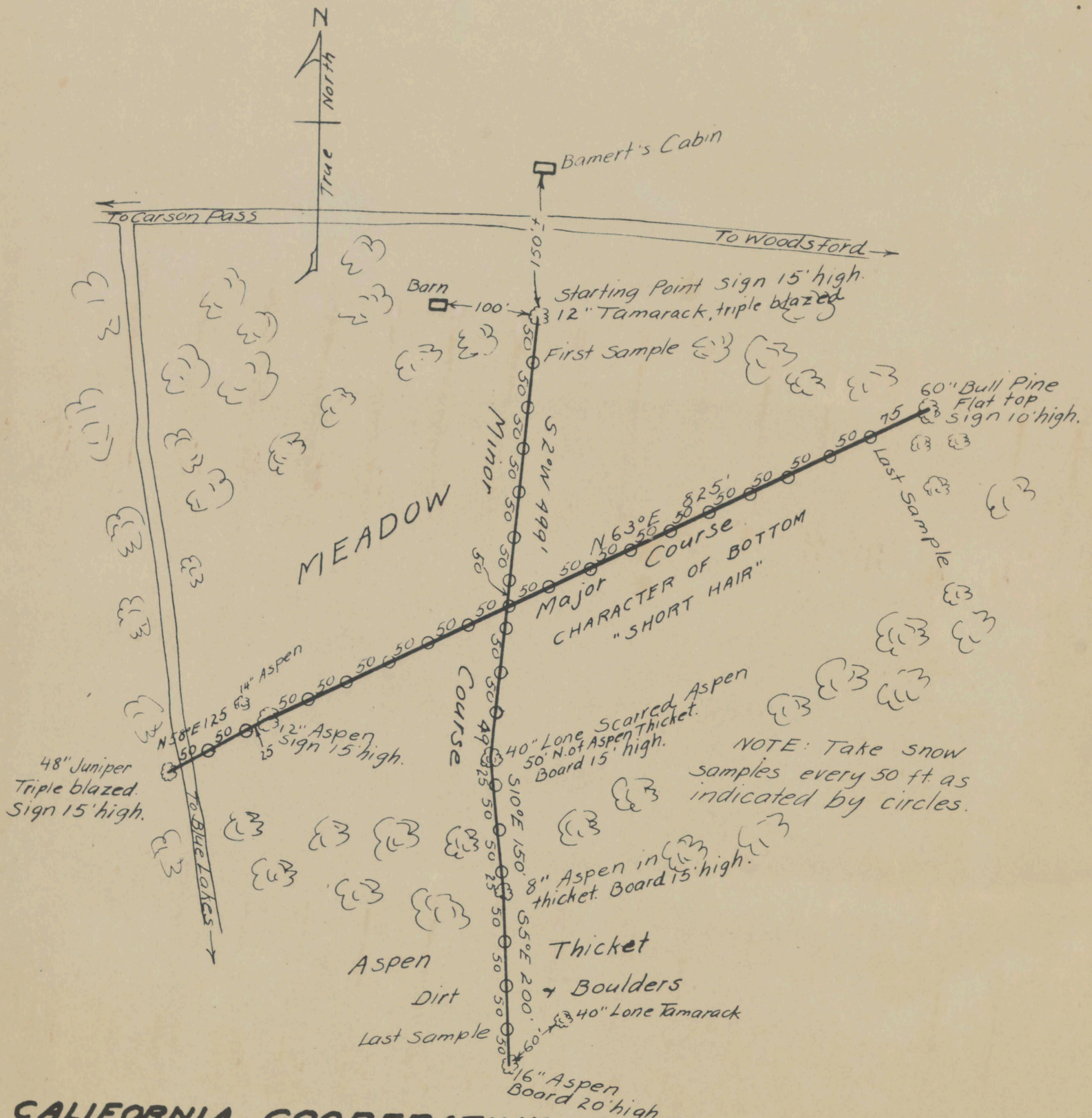
CALIFORNIA COOPERATIVE SNOW SURVEYS

EAST FORK CARSON RIVER BASIN

"BURNSIDE LAKE" COURSE NO 2

APPROX. ELEV. 8000

10-5-29



CALIFORNIA COOPERATIVE SNOW SURVEYS

WEST CARSON BASIN

"WILLIAMS" COURSE

APPROX. ELEV. 7800

J. S. CHURCH, JR.

SILVER PEAK SNOW COURSE

RENO, NEVADA, U. S. A.

Altitude 6800'

Marked-Snow Board

18" Fir

First Sample → 0'



Near Silver Creek

3 Miles N.W. of Silver Peak

Course located and marked 9/29/29
by H.P. Boardman & Ernest Barrett.

50' Spacing of Samples.

Bearing of course
about S. 15° E.

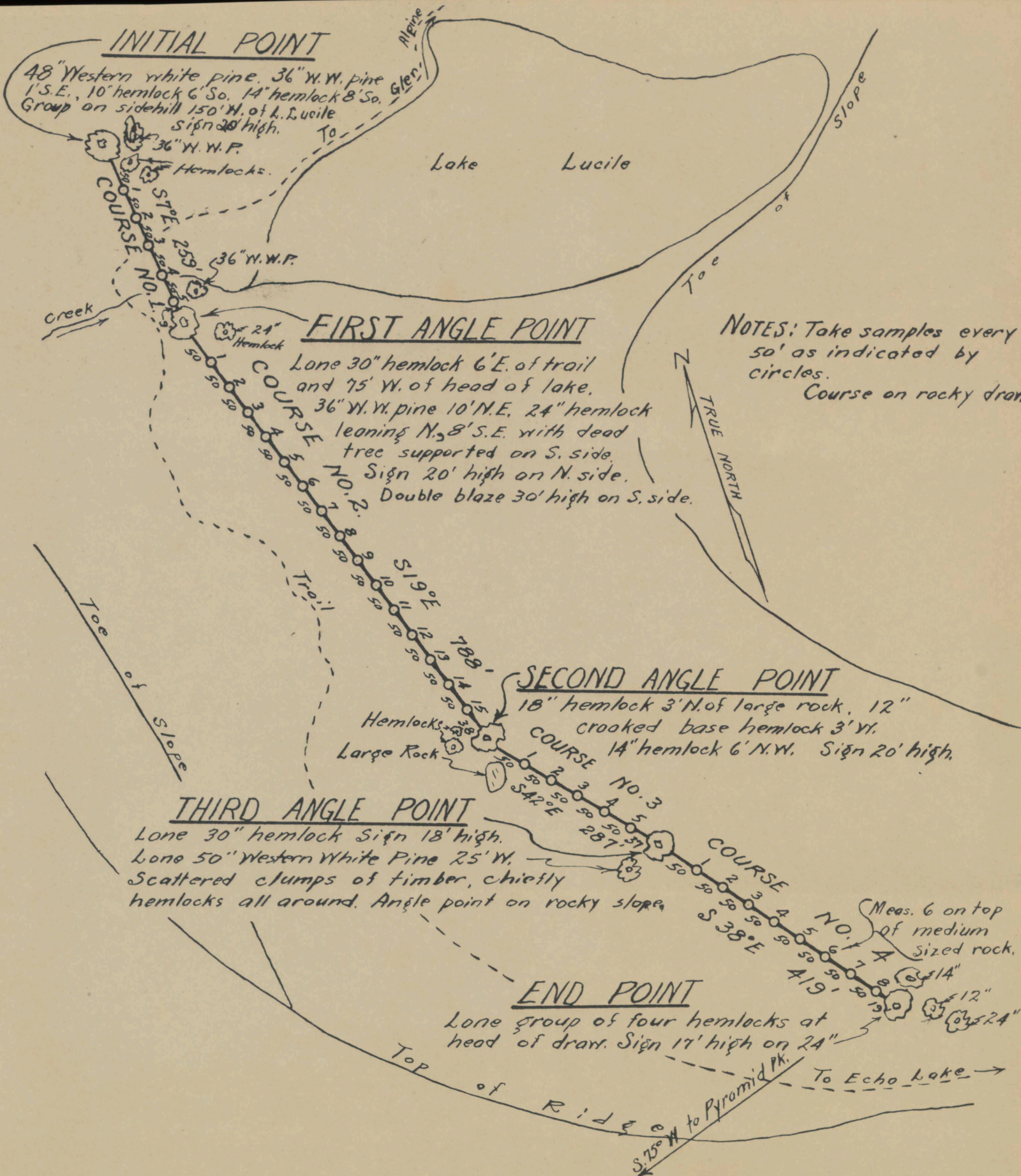
True
North

500' 10' 18'
8" Aspen tree
Marked with board

900' 43' to tree
6' Fir
5' East of S.S. line

1100' No sample here
(Too close to tree)
12" Fir
Several small fir close
around 12" tree

1250' 24'
last sample
12" Fir in clump
Marked with Snow board



INITIAL POINT

48" Western white pine, 36" W.W. pine
 1'S.E., 10" hemlock 6' So. 14" hemlock 8' So.
 Group on sidehill 150' W. of L. Lucile
 Sign 20' high.

FIRST ANGLE POINT

Lone 30" hemlock 6' E. of trail
 and 75' W. of head of lake.
 36" W.W. pine 10' N.E., 24" hemlock
 leaning N, 8' S.E. with dead
 tree supported on S. side.
 Sign 20' high on N. side.
 Double blaze 30' high on S. side.

SECOND ANGLE POINT

18" hemlock 3' N. of large rock, 12"
 crooked base hemlock 3' W.
 14" hemlock 6' N.W. Sign 20' high.

THIRD ANGLE POINT

Lone 30" hemlock Sign 18' high.
 Lone 50" Western White Pine 25' W.
 Scattered clumps of timber, chiefly
 hemlocks all around. Angle point on rocky slope.

END POINT

Lone group of four hemlocks at
 head of drain. Sign 17' high on 24"

NOTES: Take samples every
 50' as indicated by
 circles.
 Course on rocky drain.

CALIFORNIA COOPERATIVE SNOW SURVEYS
 LAKE TAHOE BASIN
 LAKE LUCILE COURSE

ELEVATION 8400'

9/14/31



END POINT =
 18" Fir on ridge with two
 Nev. signs 20' above ground.
 A 26" Fir lies 1' to the South.
 The old E.P. lies N 50° E and
 is a 36" Fir with triangle blaze
 on South side 15' above ground.

ANGLE POINT No. 4 = East Fir in group
 of 3 and is 30" in diameter with Nev. sign
 15' above ground. A 36" Fir lies 1' to the N.W.
 and another 36" one with dead hemlock in East
 base, lies 12' to the N.W.

ANGLE POINT No. 3 = Lone 36" Fir with
 Nev. sign 15' above ground and a large Single
 blaze 1' above sign. 8" fir 8' E.

ANGLE POINT No. 2 is lone 18" Fir on open
 hillside with 2 Nev. signs. One 12' and the other
 18' above ground. There is a long scar on the
 East side beginning at the ground and running
 8' high.

ANGLE POINT No. 1 = lone 26" Fir on
 sparsely timbered hillside with Cal. sign on
 South side 25' above ground lone 30" fir is N.W. 15'
 60" dead snag 8' high 50' S.W.

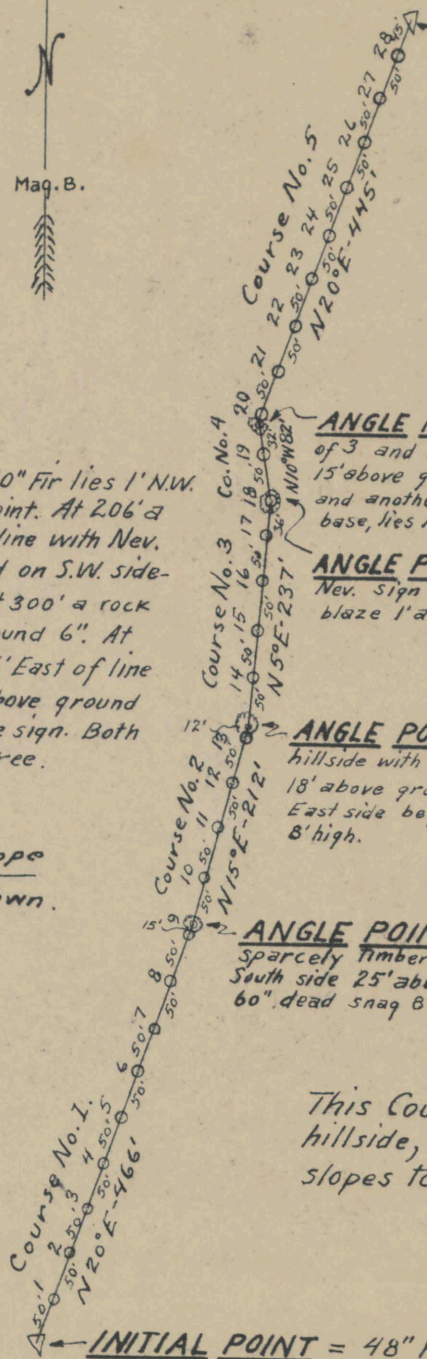
*This Course is on a gently sloping
 hillside, has a soft dirt bottom and
 slopes to the West.*

INITIAL POINT = 48" Fir in lone group of
 2. The other is a 40" Fir 3' to the West. Cal. sign
 on North side 15' above ground. This group is in
 the highest saddle N.E. of Webber Peak proper.

NOTE
 Take samples every 50'
 as indicated by circles,
 starting 50' from I.P. and
 Angle points on each
 course
 Soft dirt bottom.

*Course No. 5. A 30" Fir lies 1' N.W.
 of first sampling point. At 206' a
 30" fir lies 4' East of line with Nev.
 sign 15' above ground on S.W. side
 blaze above sign. At 300' a rock
 sticks up out of ground 6". At
 354' a 30" fir lies 6' East of line
 with Nev. sign 15' above ground
 Single blaze above sign. Both
 on S.W. side of tree.*

*Slope
 Down.*



CALIFORNIA COOPERATIVE SNOW SURVEY S
 TRUCKEE RIVER BASIN
 WEBBER PEAK COURSE
 APPROX. ELEV. 8000'

CALIFORNIA COOPERATIVE SNOW SURVEYS

TRUCKEE RIVER BASIN

WEBBER LAKE COURSE

APPROX. ELEV. 6800'

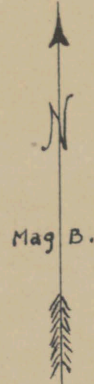
INITIAL POINT = lone twin fir
 the S. leg is 36" in diameter and the N. leg
 40". Signs on S. leg one on E. and one on
 the S. side 12' above ground.
 A lone 48" fir with large scar on E. side is
 25' W. of I.P. A group of 2 hemlocks, 24"
 and 20" is 15' S.

30" tam. 1' W. of line
 with Nev. sign 15' above
 ground.

40" tam. 5' W. of line with
 triangle blaze on N. side.

ANGLE POINT No. 1 is
 30" fir with Nev. sign 12'
 above ground. An 8" tam.
 lies 6' to South.

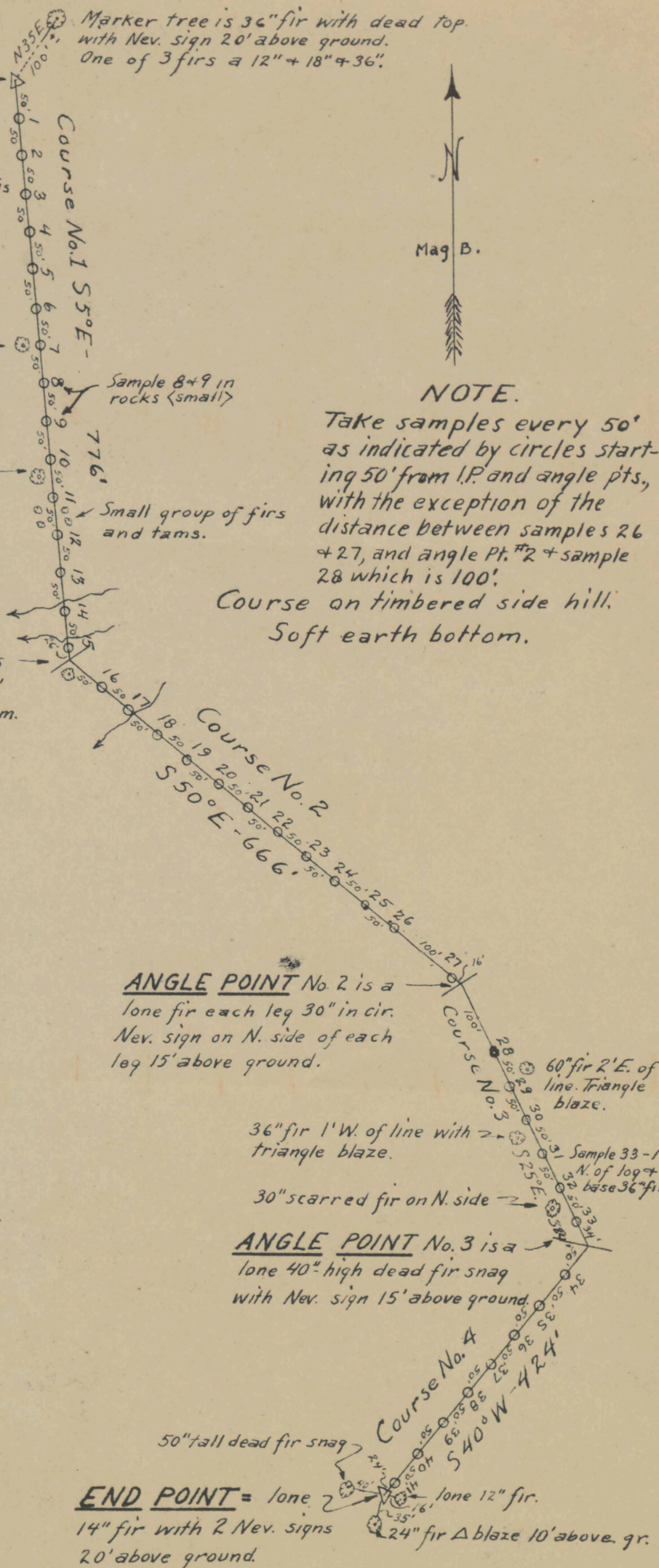
Marker tree is 36" fir with dead top.
 with Nev. sign 20' above ground.
 One of 3 firs a 12" + 18" + 36".



NOTE.

Take samples every 50'
 as indicated by circles start-
 ing 50' from I.P. and angle pts.,
 with the exception of the
 distance between samples 26
 + 27, and angle Pt. #2 + sample
 28 which is 100'.

Course on timbered side hill.
 Soft earth bottom.



ANGLE POINT No. 2 is a
 lone fir each leg 30" in cir.
 Nev. sign on N. side of each
 leg 15' above ground.

36" fir 1' W. of line with
 triangle blaze.

30" scarred fir on N. side

ANGLE POINT No. 3 is a
 lone 40" high dead fir snag
 with Nev. sign 15' above ground.

END POINT = lone
 14" fir with 2 Nev. signs
 20' above ground.