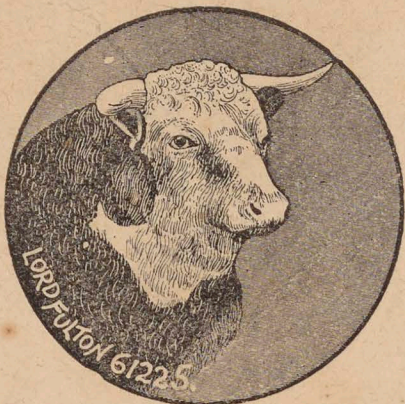


# Alamo Stock Farm

John Sparks, Proprietor  
G. N. Sprague, Manager

..... Reno, Nevada



## ALAMO SIRES

Earl of Shadeland 30th, 30725.

Major 10th, 61570.

Eureka, 54589.

McCood, 82613.

Admiral, 88003.

Lemster, 111982.

The Grove 1st, 92875.

Lelax, 102631.

Perfection 2d, 102632.

# Alamo Stock Farm

John Sparks, Proprietor  
G. N. Sprague, Manager

..... Reno, Nevada



## ALAMO SIRES

Earl of Shadeland 30th, 30725.

Major 10th, 61570.

Eureka, 54589.

McCood, 82613.

Admiral, 88003.

Lemster, 111982.

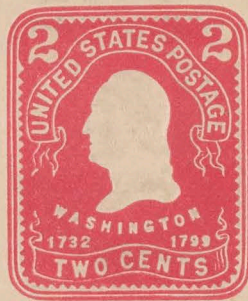
The Grove 1st, 92875.


Lelax, 102631.

Perfection 2d, 102632.



After 10 days, return to  
JOHN SPARKS,  
RENO, NEVADA.





Sole Manufacturers of D. E. Walker's  
Genuine Visalia Stock Saddles



**VISALIA STOCK SADDLE CO.**

**2283 MARKET STREET,**

**SAN FRANCISCO, CAL.**

**BEWARE OF IMITATIONS**





MANUFACTURERS OF

HIGH GRADE  
CUSTOM MADE

Stockmen's Outfits

Send for Catalogue.



ALAMO STOCK FARM.

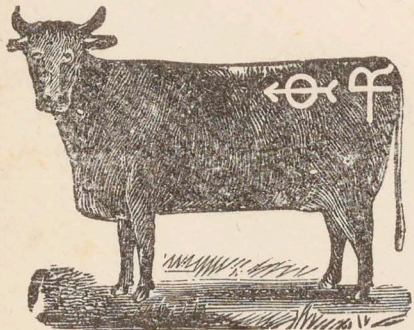
JOHN SPARKS, PROPRIETOR.

G. N. SPRAGUE, MANAGER.

— RENO, NEVADA.



**JOHN SPARKS,**  
**Cattle and Horse Grower,**  
CHEYENNE, WYOMING.



RANGES—Lodge Pole and Pawnee  
Creeks, and Brown Creek, north of  
North Platte River.



*Reno, Nevada,*.....190.....



MARICOPA OIL COMPANY

SECTION 32, 12-23

Main Office, 222 I. W. Hellman Bldg., 4th and Main Sts., Los Angeles, Cal

Maricopa, Cal., \_\_\_\_\_ 191\_\_

RETURN AFTER FIVE DAYS TO  
MARICOPA OIL COMPANY  
SECTION 32, 12-23  
MARICOPA . . . CAL

*Southern Investment Co. Inc.,  
222 I. W. Hellman Bldg.,  
Los Angeles, Cal.*