

THE WESTERN UNION TELEGRAPH COMPANY.

INCORPORATED

24,000 OFFICES IN AMERICA. CABLE SERVICE TO ALL THE WORLD.

This Company TRANSMITS and DELIVERS messages only on conditions limiting its liability, which have been assented to by the sender of the following message. Errors can be guarded against only by repeating a message back to the sending station for comparison, and the Company will not hold itself liable for errors or delays in transmission or delivery of Unrepeated Messages, beyond the amount of tolls paid thereon, nor in any case where the claim is not presented in writing within sixty days after the message is filed with the Company for transmission.

This is an UNREPEATED MESSAGE, and is delivered by request of the sender, under the conditions named above.

ROBERT C. CLOWRY, President and General Manager.

RECEIVED at

39QNI.K. 39Paid

Reno Nev June 5, 1907

Hen John Sparks, C A R S O N, N E V.

Larry asked by telegraph that you wire timothy D Sullivan flatiron building new York that he is alright and to take care of him. Doctor lyman who decamped from Goldfield is making some trouble for him ever bullfrog rush answer

G. G. Rice.

4-49P.M

MONEY TRANSFERRED BY TELEGRAPH.

CABLE OFFICE.

SEE OTHER SIDE FOR TELEGRAM

The Western Union Telegraph Company

THE LARGEST TELEGRAPHIC SYSTEM IN THE WORLD.
OVER ONE MILLION MILES OF WIRE IN THE UNITED STATES AND CANADA.

It has over 24,000 Telegraph Offices, including Branch Offices.

It has also Direct Connection by Telegraph or Telephone with as many more remote and smaller stations, making a total list of over 50,000 in the United States, Canada and Mexico, and this number is rapidly increasing.

Seven Atlantic Cables,

Connecting North America with all points in Europe and beyond, including Two Cables of the American Telegraph and Cable Company, Four Cables of the Anglo-American Telegraph Company, and One Cable of the Direct United States Cable Co.

Direct Wires to Galveston, Texas, connecting at that place with the Cables of the Mexican, the Central and South American Telegraph Companies for all points in Mexico and Central and South America.

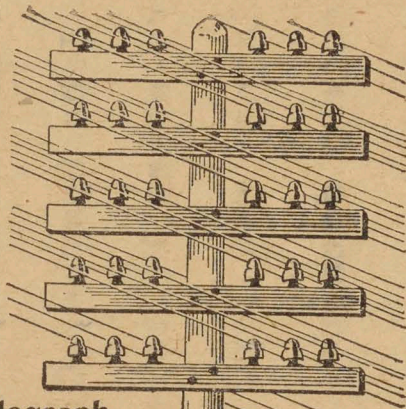
Direct Wires and Cables to Havana, Cuba, connecting at that place with the Cuba Submarine and West India and Panama Telegraph Companies for all points in the West Indies.

Connects at San Francisco with Pacific Cables to the Sandwich Islands, Honolulu, Guam, the Philippines, China, Japan, etc., and at Victoria, B. C., with Pacific Cable to Australia and New Zealand.

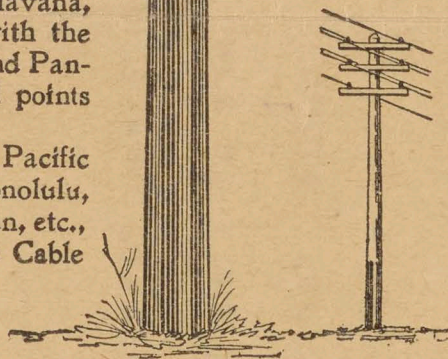
Connects at Seattle, Wash., with U. S. Government Lines and Cables to and in Alaska.

Exclusive connection with the Great North-Western Telegraph Co. of Canada.

Domestic and Foreign Money Orders by Telegraph and Cable



THE TWO TELEGRAPH POLES REPRESENT THE RELATIVE SIZE IN NUMBER OF OFFICES OF THE WESTERN UNION AS COMPARED WITH ALL OTHER COMPETING COMPANIES COMBINED



W. U. T. CO.
24,634
OFFICES.

OTHER 'COS.'
4,868
OFFICES.

SEE OTHER SIDE FOR TELEGRAM

THE WESTERN UNION TELEGRAPH COMPANY.
INCORPORATED
24,000 OFFICES IN AMERICA. CABLE SERVICE TO ALL THE WORLD.

This Company **TRANSMITS** and **DELIVERS** messages only on conditions limiting its liability, which have been assented to by the sender of the following message. Errors can be guarded against only by repeating a message back to the sending station for comparison, and the Company will not hold itself liable for errors or delays in transmission or delivery of **Unrepeated Messages**, beyond the amount of tolls paid thereon, nor in any case where the claim is not presented in writing within sixty days after the message is filed with the Company for transmission.

This is an **UNREPEATED MESSAGE**, and is delivered by request of the sender, under the conditions named above.

ROBERT C. CLOWRY, President and General Manager.

RECEIVED at

23 CA K BY

25 collect 5 exa 53 cts

Tonopah Nev Sept. 11 via Carson Nev Sept. 11 1906

Governor John Sparks,

Reno Nev.

Understand Goldfield situation critical I

will be there tomorrow if can be of service to you there

command me.

4:36PM

Cox.

SEE OTHER SIDE FOR TELEGRAM

The Western Union Telegraph Company

THE LARGEST TELEGRAPHIC SYSTEM IN THE WORLD. OVER ONE MILLION MILES OF WIRE IN THE UNITED STATES AND CANADA.

It has over 24,000 Telegraph Offices, including Branch Offices. It has also Direct Connection by Telegraph or Telephone with as many more remote and smaller stations, making a total list of over 48,000 in the United States, Canada and Mexico, and this number is rapidly increasing.

The Western Union Company has Two American Atlantic Ocean Cables from New York City to Penzance, England, direct; both Cables duplexed. Four Anglo-American Cables, and one Direct United States Cable. Direct communication with Germany and France.

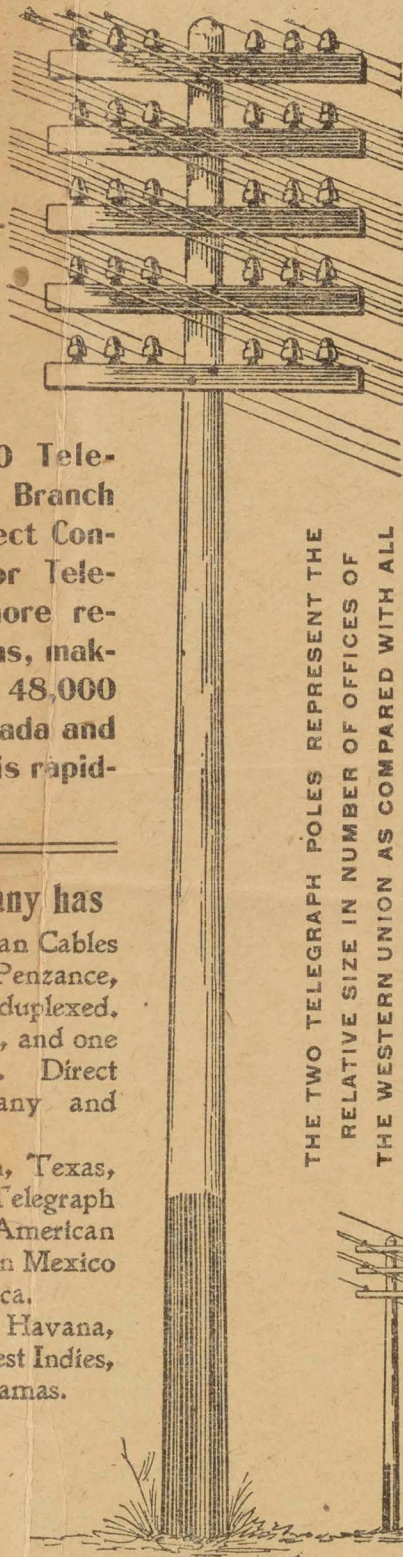
Direct Wires to Galveston, Texas, connecting with the Mexican Telegraph Co. and the Central & South American Telegraph Co., for all points in Mexico and Central and South America.

Direct Wires and Cables to Havana, Cuba, and all points in the West Indies, and to the Bermudas and Bahamas.

Pacific Cables to Australia, New Zealand, Honolulu, Guam, Philippine Islands, China, Japan, etc.

Connects with U. S. Government Lines and Cables to and in Alaska.

Domestic and Foreign Money Orders by Telegraph and Cable



THE TWO TELEGRAPH POLES REPRESENT THE RELATIVE SIZE IN NUMBER OF OFFICES OF THE WESTERN UNION AS COMPARED WITH ALL OTHER COMPETING COMPANIES COMBINED

W. U. T. CO.
24,000
OFFICES

OTHER COS.
4,583
OFFICES

SEE OTHER SIDE FOR TELEGRAM

THE WESTERN UNION TELEGRAPH COMPANY.

INCORPORATED

24,000 OFFICES IN AMERICA. CABLE SERVICE TO ALL THE WORLD.

This Company TRANSMITS and DELIVERS messages only on conditions limiting its liability, which have been assented to by the sender of the following message. Errors can be guarded against only by repeating a message back to the sending station for comparison, and the Company will not hold itself liable for errors or delays in transmission or delivery of **Unrepeated Messages**, beyond the amount of tolls paid thereon, nor in any case where the claim is not presented in writing within sixty days after the message is filed with the Company for transmission.

This is an **UNREPEATED MESSAGE**, and is delivered by request of the sender, under the conditions named above.

ROBERT C. CLOWRY, President and General Manager.

41 Ca K CO 169 Paid

Carson Nev August 4th-1906

RECEIVED at

Jas. G Sweeney, Attorney Genl.

Golden Hotel, RENO NEV.

Better act at once you wire people intentions to Goldfield better leave for there immediately governor received the following. From Goldfield. Governor John Sparks, Our plant is endangered by I.

W W which has called news boys to strike only cause is retaliation on Tonopah Sun, both papers being owned by me last night two carriers were assaulted one seriously and not allowed to finish delivery today we only succeeded in making delivery by putting United States special delivery stamps on each paper and sending through post office with specially sworn carriers at heavy expense. Agitators are threatening blow up office and at our own expense we are maintaining guards same at Tonopah Sun we called on sheriff Bradley for protection but he left town this morning to avoid enforcing law very hard to get guards at any time at any price one store and one restaurant also seriously threatened will you give us the protection of peaceable citizens and property owners. Goldfield Daily Sun, L C Branson, Owner.

9-22 P

Frank Wildes.

SEE OTHER SIDE FOR TELEGRAM

The Western Union Telegraph Company

THE LARGEST TELEGRAPHIC SYSTEM IN THE WORLD. OVER ONE MILLION MILES OF WIRE IN THE UNITED STATES AND CANADA.

It has over 24,000 Telegraph Offices, including Branch Offices. It has also Direct Connection by Telegraph or Telephone with as many more remote and smaller stations, making a total list of over 48,000 in the United States, Canada and Mexico, and this number is rapidly increasing.

The Western Union Company has Two American Atlantic Ocean Cables from New York City to Fenzance, England, direct; both Cables duplexed. Four Anglo-American Cables, and one Direct United States Cable. Direct communication with Germany and France.

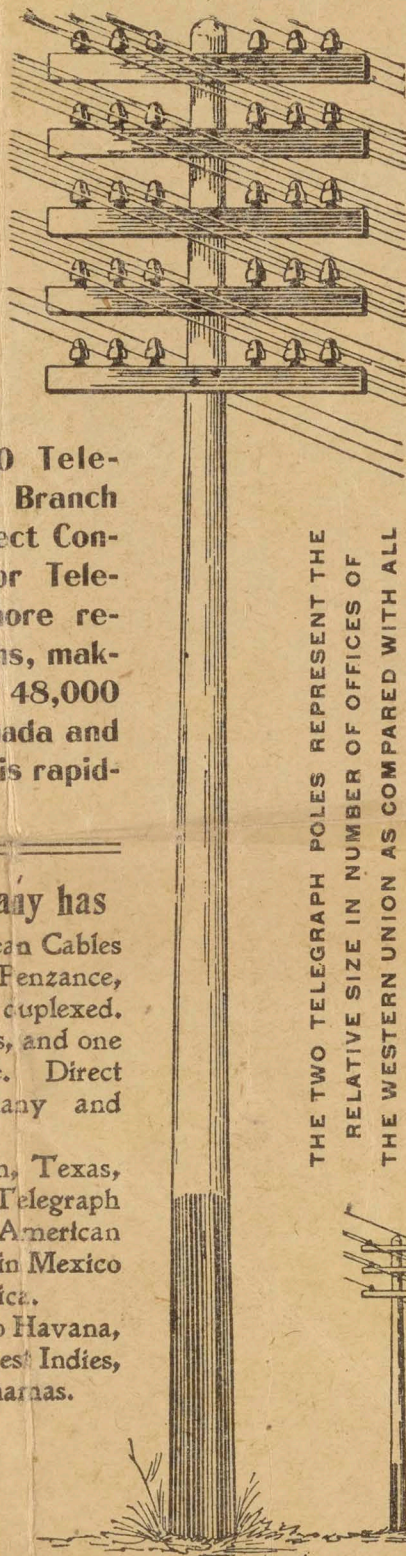
Direct Wires to Galveston, Texas, connecting with the Mexican Telegraph Co. and the Central & South American Telegraph Co., for all points in Mexico and Central and South America.

Direct Wires and Cables to Havana, Cuba, and all points in the West Indies, and to the Bermudas and Bahamas.

Pacific Cables to Australia, New Zealand, Honolulu, Guam, Philippine Islands, China, Japan, etc.

Connects with U. S. Government Lines and Cables to and in Alaska.

Domestic and Foreign Money Orders by Telegraph and Cable



THE TWO TELEGRAPH POLES REPRESENT THE RELATIVE SIZE IN NUMBER OF OFFICES OF THE WESTERN UNION AS COMPARED WITH ALL OTHER COMPETING COMPANIES COMBINED

W. U. T. CO.
24,000
OFFICES

OTHER COS.
4,583
OFFICES

SEE OTHER SIDE FOR TELEGRAM