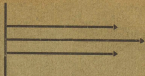
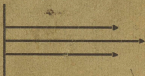


PERSONAL NOTES



TELEFON-BLOK

No. 1457



- Promised -

Saving Kit to Peter in 1928.

Box of Road Accidents to Peter in 1928.

Rather Boxes to Abraham in 1928.

packet boxes, plans for water house,  
or field work (with expense)

yo-yo's - various work in Eng. trans  
for trip by land, sea, inland, etc.  
(to visit, to see, land (?) visit?)

Cost for bicycle wheel

2 1/2 in. long

double nuts.

W. W. Fulmer 447 Foot Washington Ave  
New York City

Wash. house

Oil for engine.

Sheet for therm. hygrometer

Wash. shirt & undershirt?

Glass tubes

Various boxes to Mother

John's letters

W. W. Institute

Very Personal Purchases

(List on reverse yet)

Water Color - Sunset	6 K.
Sunset & Days - "	12 K.
Warrior in Whale Tooth	20 K.
Seal Skin	20 K.
Candy (2 Times)	?

## Exposure Tables

For Close Up -	Time	F. 6.3	Shutter
" Distance	"	F. 9	"
" Real Close Up	"	F. 4.5	"
" Interiors	"	F. 3.5	" + Time*

\* Daylight 1 sec. if from more than  
one source; 2 sec. if from  
one side only ( $\times 6$  sec. + F. 9)

Hours - Early or late, see Cloudy Schedule

Ray Filter - Double the time.

Snapping color film for screen for  
panoramic camera. Use light side  
at bottom and heavy side at top.

Ray Filters.

My  $3\frac{1}{4} \times 4\frac{1}{4}$  Kodak 10 times (Eastman)

Feet used only 2 times

Large camera used 5 times

Feet number is stamped in glass  
if in metal frame

For Night

Shawnee & Anasazi

Shaping by - H. H. H.

as you find

I suppose you will

after the longer period

Don't forget

---

Yours tenderly

---

Beacon Valley, Ill.

---

at 3 <sup>21/2</sup> miles from the  
ground

- Developing formulae -

Developer - Radical 100, 1 part Radical

to 20 pts water

(Temp. must be 64-68° F.) <sup>examine</sup> <sub>to dev.</sub>

Fixing - Small blue fixing can (red light can)  
full of fixing powder to 14 oz. water

\* Develop from 6 min. on until  
picture shows inside of cylinder.  
Water must be warm or action  
of chemicals too slow.

Screens - Use heavy screen for all work.

• Light (thin) " for dim light,

dark colors with vivid tones. ?

In sunny weather

Time - with Graflex - 1 sec. at F11

(this is already multiplied by 50).

In cloudy weather 1 1/2 sec. at F.11.

Note. Blue Bell tower is seen at

1/3 sec. and F11.

Use Photometer and use slightly  
brief time than indicated.

Results: With denser screen, reds and  
golds come out well.

Try lighter screen for purples.

Winds in Poetry

Laura M. Abbott - Little Women  
North, West, South Winds  
Touching El. p. 238 or  
later chap. XXI (saying).

Beauty in Nature -

Willa Cather's A Lost Lady  
Chap. VII (End).

Cp. "Surrender" by Sidney Lanier

— Nov. 11 —

Godhavn

Wind SE 135. 752. King Island

Photographic Material

13. Film Paces 5x7. July 1928.  
(12 Exposures)
2. Circuit Films 3 ft. long.
- 10 Film Paces 3 1/4 x 4 1/4 for box floor.  
(12 Exp.)
- 10 Motion Picture Films (for dry light fitting)
- 16 Agfa Color Plates various.  
(4 plates each).
- 100 ft. Motion picture film  
(for Leica)
- 132 ft. Agfa Film for Leica (also  
5 spools 3 1/4 x 4 1/4 film (also  
(6 Exp.) box orig.  
having 49 ft)
- King Selte 6 Agfa Comp; 2 1/2 Eastman  
Neutral. Powders 14 pairs Eastman
- 1 Tube Paste.
- 5 Glass Tubes Eastman Developer
- 1 Pr Scissors



Rubber Bands

- 2 Extra Graflex Plate Holders
- 2 Extra metal tripods (one good)
- 2 metal tripods from Hiltenshony

1 Ray Filter No 2.  
(Amn or Angstedt?)

10. Boxes Agfa Color Developer

---

Ever Ready Flashlight - Vico 1/2 p. 10  
Surge - Black & Nickel.

---

Articles by De Witt

1. Canoeing in Greenland.

The twin boats.

The Southern twin in the Northern  
twin country.

Patrol with dories.

up Glacial Streams.

2. Three Sums: Twilight at the Arctic  
Circle.

(a) The Midnight Sun.

(b) The Equinox.

(c) The Midday Dawn.

The Equinox.

The sun sets <sup>west</sup> tonight and at  
6 o'clock. We are below our  
latitude again where we  
saw the Midnight Sun in June.

The colors are vivid and  
are mirrored by the rippling  
waters. We are riding on  
a sea of the sky. The  
horizon is merely a straight  
line across our vision. Above

and below are breast-shaped cumulus clouds, blue in their depths pink on their pendulous crests. Low islands dot the surface, only sufficient in number and size to give perspective and yet guard the solitude of the pictures.

Sunset: The clouds and sea have now become golden heliotrope. The clouds are luminous, the sea is molten. The sun too is a globe of molten gold flattening on the molten surface. Near islands veil its glow and intensify the softness of air and cloud.

as the sun sinks from final view, a few bars of cloud near golden wings upward to the cloud mass now slowly fading to blue yet with tinges of crimson. Far to the northwest <sup>appear</sup> the pale crescent of the waning moon, keeping pace with

its mate, and in blue silhouette the hills at the goal of our journey.

Twilight: The sea is silver and blue and the sky a soft flush of saffron. Nature is sinking to rest. The crescent moon now dominates the sky, but earth returns in multitude. Islands like mounds are floating by. The eye counts them by the score. They are a menace to ships without but are our gateway and guard.

Night: A silver avenue of sea and sky framed by dark shores. a few bars of land, a saffron glow. The captain stands at the bow outlined against the light and with silent gesture directs the course. The thrub of the engine and song of the crew give the pulse of life. a turn to the right the dark pentals finally bring us to anchorage.

Pictures for Eastern Slides  
all by W. Thalbitzer.

The Ammassalik Eskimo

by W. Thalbitzer: language  
and folklore.

2. Meddelelser om Grønland

Close up Views: XL. Anden Afdeling.

- p. 154 Fig. 13 - Angrook, Kaktisik etc.  
 " 163 " 20 Tee-ni-er-ti-er-eg  
 (an art face) \*\*  
 " 167 " 22 Profile (unusual) \*  
 " 189 " 27 - Women on Wind  
 Platform (unusual)  
 " 192 " 28 - Men & Children "  
 " 200 " 30 - Old Men & Children \*  
 " 225 " 36 - Women at Ruins  
 Ruins in ruins \*\*  
 " 243 " 43 Two Kaisers in open  
 sea " for outside Ice  
 Coast. \*  
 " 244 - 49 - Fine Kaisers for  
 Coast \*\*  
 " " - 45 - Kaisers looking off  
 from in background \*\*  
 " 256 - 48 - A loaded  
 sled \*\*  
 " 320 - 74 - Men Carrying  
 sleds \*\* (art)

Folklore: - The Dream Contest against  
a Dead Opponent. p. 465ff.

- " 344 Fig. 186 Dog Team at  
 " 378 " 98 - Saqajik wife (Wag  
 " 117 Pami-ethla \*\*  
 " 118 Narsa in Nas-ut-ethla  
 " 528 " 142 - Dog sledging in  
 " 142 - Dog sledging in  
 " 142 - Dog sledging in

Subjects

Monday Nov. 14.

Meal of Seal & English powder in  
No Ice. <sup>Some exceptions as last</sup> They <sup>at once</sup> started  
stern at head of pond. (Boys still playing)  
Shot out west of boat from the

a snowy scene. A tiny spot of  
cabin on a hill. Night falling.  
Two figures.

an eager captain. Stuff shames  
an icy barrel. Ice black  
The Pilgrims.

subject. Seen boat from the  
at anchorage. <sup>at once</sup>  
said all loss of touch. "I saw"

Hence. Solitude, lack of mail  
Stuff in open. Personal view  
indistinct. Shoulders near  
"saying". In in darkness  
guided by flash.

Captain: Agass, Kjerfveit  
all night against anchorage.

Tues. Nov. 15.

Conference. Plain Talking.  
Leadership. Criticism. Caution.  
Getting adjusted.  
a cold scene, dark. Barrel in view

Wed, Nov. 16. Fine planes of ice  
~~masses~~ <sup>forming</sup>.  
 Technical Discussions of  
 Sun-Sunazing. Dangerous  
 Kalliguit above but willing  
 to go by dog teams. Kindness  
 about a case in the east  
Blue Nature; Physical  
 Living of the rabbit.

Thurs Nov. 17. Ice on tundra <sup>3000</sup>  
 Field +1°F. One wick <sup>level</sup>  
 an Esquimo house? <sup>try call</sup> sitting  
 writing all day. <sup>low</sup>  
 sled + coal. <sup>sliding bag</sup>  
 Friday, +6.5°F. Ice breaking  
 out of bay somewhat.  
 Sunshine. Trip to Abres.  
 In Nature's sunshine. Island  
 ice. above the lowlands  
 + fiords. Here saw <sup>cloud</sup> + clouds  
 stretch out in company.  
 A snug home in the  
 snow. Here is my perfect  
 winter - Windows - the

glances of the distance  
"presents themselves by night"  
Home in night with  
lantern. The winding  
path + The crisp night  
The Aurora line <sup>of</sup> threads  
of light woven in the  
texture of the sky -  
Fog fish slicer -  
Peace gifts - a very song.



Weather Instruments

at Saw Hill Camp.

2 Misc. Thermos.

1 Sling Psychrometer

1 Hygrometer.

1 Anemometer

1 Rain gage in position.

Friday - Blue landscape  
with ground  
all ready types - Red lines  
here was near to show  
much repetition of types. Had  
used synopsis chart for  
not at.

standing up to  
type and  
writing  
with  
pen  
and  
brush

Old Church Dining -  
Two rooms, no pillars  
New roof, more windows,  
but same no types  
Paint?

Walter as a compliment  
really prefer the others

Sleeping bag.

Remember I didn't ask you for it.  
but a <sup>with</sup> charing done of train  
almost.

It makes me very happy to think  
that he should have agreed to  
purchases

Sold out. In suits - Others go,  
he stays. He must have  
some chance

Remind myself -

Told Mother Goodbye  
but didn't have coming

No race to be run to  
more interestingly like things

than slow and material  
(i.e. not essentially) minded

yes, they seem compact  
and she is now almost  
glad that she is a slave

and I see a glimmer of  
a brighter eye, or more  
promising spirit in America  
than I did. There is something

there I don't see but she may  
be losing the (greater) things  
I see in my pocket for lack

of having found again  
what - waste of time since

9/11. Her heart is the  
one asset. Don't lose  
it. Love, happy girl.

She will find happiness by

221  
Saturday Nov 2

Thursday. Large reefs still  
leaving the Navy City.  
for the Silences area  
I was (Rags) the lowest  
laughs.  
Das laughs but will reach  
the church

Write journal - Name list did Monday

Cloudy - storming. But  
wind N. Bar quite low  
but now rising - But  
wind N. Good weather for  
sailing.

Headlands about capped  
Recess snow covered.  
Stiff down on neck  
Cauldage { my father  
Mack; P. Arley  
Nicolai -  
Baltic(?) -

One into stream - white bellied  
grey ~~hairs~~  
Toy lower but home.  
Single light  
Rags up for igloo

Wind fresh, boats  
rolling forward.  
Behind islands - Great  
sea - a friendly race  
without speed -  
Storm on floods.

---

In a rough sea  
Monkey picture  
for spray & getting <sup>the</sup> ~~the~~  
prevented  
picking for over  
submerged except by  
within sail.

Way, waded and  
All Captain & Boat

---

A Symphony in white & blue  
with the sky too.

---

Upper - Going to Bed

Snow on the Roof

Nov. 13 - Camp, daylight 4:30  
why? Just weather -  
chains.

A night Scia

into school in Scia  
lines and in dead white  
a placid sea with a lazy  
roll - a half moon  
set in open places.  
A squadron of boats  
in single, rolling  
lazily from side to  
side as they start  
their day anew. I ate  
ancient this - This says  
the stars, their weather  
guide the clouds.

Finally 9 larvae in canisters, packing the  
the colors Spay coating me with lice.  
A narrow interval of dark

Sea Pilot

checked

+

Neloa

Source also

05

An acle of islands  
white buttons on  
a mass of blue  
with white mts  
wall.

A Rose.

A Call to quarters.  
Wind freshening  
Boats struggling with  
the shores forming  
landward. A short  
message, a two  
sided finger on  
inside of hand  
Angier has very  
narrow and is going  
calling round a wave  
death. Pro. why?  
He go on  
and have the vessel

throats shawl round  
& take up speed  
by rounded cliffs toward  
supernatural camp  
to get beneath the  
East wind's touch

Oh how dangerous if  
snow for every knee  
The fresh wind with  
all a ting of salt  
blows at your nostrils  
and seizes your  
clothing.

any man's? It seems  
so - what they are  
are wearing experience  
Duck's coat.

Ice in one stage  
protected by 34.9 = (105° C)



Pages - with fish etc.

Shedding of hair

Taking an Ice Sheet

A Camp on the ice

and salt snow

above quality of ice

and a map of S. 34.9

Why were we seeing a  
haze? I had a point  
and an opening to the  
sea. So we go out  
that way tomorrow?

Yes. *Phragmites*. a little  
shelter being a point. But  
no sign of fish is there?

Can not get the name  
of the Captain and I have  
no common language.



above - gun

when again?

Bring up

small

No think that I had  
been waiting to go on  
shore and planning  
such purchases when  
the boat was safe  
in harbor and soon  
on return towards

a Fair Steam Boat  
with falling barometer.

Do we not see all  
night? Capt. Hopper tipped  
on the way. He saw also  
Stirling Field, Cabbot's point,  
land there. Cabbot's  
the mts.

Of the team not more  
than three will ever return  
perhaps probably not even they.  
They save themselves into the  
success of the whole. But  
that's only what we are  
doing.

Who will be the cause  
of it? Who knows?

---

Surprise

A Day of Expectation  
= Surprise + Surprise

---

seeing shells for  
silly water, yet were  
breeding them there  
what for? why are we  
not agitated?

---

Matches " " "  
" " " "

Fearing them there, did  
I do right. Their bonus  
was 15K. The mate had  
made the jump on the  
Koolhaan in July. An  
ice pilot was aboard.

But all had their  
great doubts, the best  
agreement was half-  
way good. Even I went  
beyond that,

One can not with face  
eat dinner of or better  
food than your  
companions - and the  
question of prior right  
of passage over after  
comes up.

The boats of both  
were in question and  
needed no common  
language of details.

Sleeping. I offered supper.  
They gladly ate. Would they  
expect me to make the  
dishes. The ship's cook did  
that.

all showed plain signs  
of wishing to sleep but ~~not~~  
did not go to the hold,  
were they trying to force me  
to? I finally asked Capt.  
where he would sleep.  
He doubled up on the  
seat with head on wall.  
So the Capt was brought  
Then I refused his bed  
indicating that the Capt.  
must not to use the  
ship, and indicated that  
I would go to the hold  
if given a canvas for  
the floor. The plan was  
accepted with alacrity.

The Ice Pilot (Taylor) & his  
his a passenger to  
somewhere unknown  
followed us. The  
heads of the men made  
a good bed. We  
made good talk  
fellows.

By 11:00 they were  
up. Now they have  
been working all  
day and must stand  
duty all night.

This morning they  
opened to make coffee.  
I invited them all in  
and we had  
regular breakfast.

at least it's bread &  
dry fish & black coffee.  
To night the captain

was cold & hungry and in  
for just coffee. He had  
no other thought.

I had made him outwashed  
at noon - Tonight I gave  
him my rain-puro (has  
was chilled there), then  
filled him with rice  
bread, & entered salinas,  
bread & manolada &  
cookies. He returned  
with a smile to his task  
of driving a helio-capric  
against the night and  
an east wind of 10, 4.

No acclimating is possible.  
The old road of fox has  
been forgotten.

As they say Thoreau  
I have told the Captain  
was to come for rice at  
12 tonight.



at critical time near  
dove a distance  
directly behind the first  
red boat turned to  
course in clear  
the survey cliffs were  
it exposed.

Relay signals, and  
you are looking for  
darkness, my two  
could make their way  
but at 10 from the  
system is empty.

We are coming  
out. into the upper  
ground, he is off ship  
& sleeping near on  
the beach.

anchorage - 12 Midnight 19 hrs  
out.

Start at 8 - Second 4 hrs

Captain wants a face wash.  
He needs sleep too.

"Now to Snowdrift and tell  
myself. Hip, hip, hurrah!  
Slipping off in sleep I say  
Captain says a happy  
laugh - Tradition is  
a far more thing, yet  
there may be a basis in  
fact. 5 cups, or so.

We all the time are  
tired with cigarettes and  
a heavy towel all day long  
& punch.

+1°K

+65°

11.5

---

Library for Mt Evans

Tauschnitz Edition of Eng.-Amer. Authors  
Meddelelser fra Grønland

42. Danmark-Expeditionen 1906-08  
Wegener's Report on Meteorology.

42-43 " - Kite and Balloon Flights  
East Wind.

52 - Alabama Expedition  
by Einar Mierchles  
[Inland Ice]

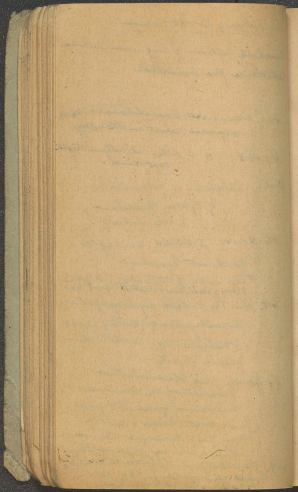
46. No. 1+2. I. P. KOCH, Survey of  
Northeast Greenland

† Summary of Meteorology End of No. 2  
Theory of Glaciation - report of Inland Ice

64. Dr. Th. Wulff's Hydrographical  
Investigations (North of Davis  
& Melville Bay) report Temp. in  
Davis Strait.

44-45-46. Die Glaciologische  
Beobachtung der Danmark  
Expedition by Koch und Wegener  
[Snow Drifts - Glaciers - and of  
drifting - Names of streams -  
blue and grey yellow ice etc.]

59. Résultats Scientifiques de l'Expedition  
Suisse au Groenland 1912-13.  
by Dr. Wegener and Mercanton.



Material for Inland Ice.

Overlaid - several meter-long pieces

Tips of bamboo.

Bamboo poles for (a) Thermo. shelter  
(b) Camp. Pole.

Flag for weather vanes.

Snow Sampler Set.

Silliman's tank, chemical, etc.

Cameras - Tripod + color screens.  
"Tuliphot."

Note books + pencils.

Lantern + candles.

{ Chisel Ice-drill.

File glass tube

{ Pale with spoon cleaner. ←

Shovel + picks.

Rope + harness.

Ski + snowshoes.

{ Barograph + aneroid + compass

Marching Compass

Thermo-hygrometer + psychrometer +  
Tables + Hygrometer.

Thermos.

Balls for bicycle cyclometer + drill.  
3/4 in. long. (double meter)

Ice + snow thermos (Glass tubes).

Anemometer.

Bottle for water (Nehy inaccuracy)

Magnifying glass to study snow  
flakes for crystallization  
in the wind and to color

Ski. & straps & watch kamias

✓ Snow Anvils & canvas pants.

✓ Coal sled for the snow.

Inner cloth in tent to keep  
down moisture (!)

✓ Canvas for spray hood.

✓ Boots - 2 anchors - rope (poly?)

✓ Sextant - Artificial Horizon

✓ Half scale kamias

✓ Pockets & buttons on trousers

✓ Shorter arms & black moose

✓ White Anvils

Sew up leather bag

Rubber tubing

Fix them - tubes.

{ Air station. Vane  
Reading of thermometer.  
Ice table.  
Rings

Tent & fur. construction by force?

Three anvils

✓ Alcohol thermometer (Get one by radio  
from Ketchikan) ?  
via Anvils.

Tubes - plain cut.

Amber goggles

Compass and means of determining  
Gradient of slopes.

Sextant ?



+ 0.9° C.

+ 1.0  
0.9

1.2  
0.5  
0.8  
0.9  
0.4

Life at Camp

Edimus Life.

Heat

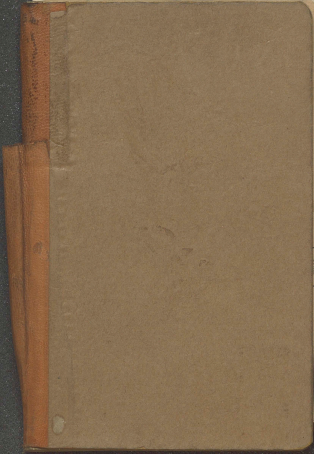
Food.

Nature blue & white  
Litt. Cold. Coats rough.

Was I understood the amount of physical  
living. But it is the thing, then it is one told & long.

1200

+ 1.200



Mr. Norton  
Russell

Mr. Bright

1914  
No. 12

*Hyderabad*



Notes

LV HOBOKEN 155 A - WEDNESDAY  
 AR BINGHAMTON - 630 A "  
 DEP " LACKAWANNA No3-325p  
 AR Buffalo 655 pm "  
 LV " Michigan Cent.  
 AR Detroit - 625 am THURSDAY  
 LV " PEREMARQUETTE 855 E.S.T.  
 AR Holly - 950 Am - CSTIME  
 DV Holly - 615 pm for FLINT.  
 LV FLINT GRAND TRUNK 10 PM.  
 AR LANSING 1155 PM  
 DEP LANSING MCRR 825 AM <sup>Friday</sup>  
 AR JACKSON 925 AM  
 LV " 945 AM  
 AR CHICAGO 230 PM  
 LV " C<sup>and</sup>NW 830 PM  
 PASS CAYENNE 1010 PM Sat.  
 THRU NEVADA SUNDAY  
 AR RENO 440A MONDAY  
 SEP 3<sup>RO</sup>

- Receipts -

For Expenses - From Master Kelly	
Draft (Cashier)	500. <sup>00</sup>
Cash	100. <sup>00</sup>
Check (from Gov. Dept)	100. <sup>00</sup>
For Payment of Luncheon from Ralph Adams	20. <sup>00</sup>
Extra \$ <u>10</u> used for passing	50. <sup>00</sup>

Badham -

July 11 - Stepler - Clean - Helping taxi passover	1.00
"     Time for making our cushions to get seat at table	.25
" 12 - To Strand and Two Kids	
July 13 - To "Banta" for passing in Mexico	6.00
2 extra passages to street	1.25
Note book & pipe	.95
" 13 - At Jacobsholm	
To two guides	3.00

July 14. Godhavn. To two boats  
for carrying luggage  $\uparrow$

July 14. Hans Egede  $\uparrow$  1.00 kr  
and board 1.00 kr

Water boat + fuel 9.50 kr  
Water boat + fuel at Linnear 5.00 kr

Upernivik -

for clearing water boat  
loaned by Nest Anderson  
for trip to Island Ice 2.00 kr

To girl + boy for carrying  
me out to photograph  
iceberg - 1 m. shots 2.00 kr

[ One-Half share of boat to Godhavn  
and Linnear with 1 m. shot  
if Nest will accept. ]

Aug. 15 - Tips - Hans Egede  
10 kr + 10 kr + 5 kr 25.00 kr  
= 49.25 kr = 13.25

Supper 20.62 kr

To Canteen 11.00

Aug. 16. Breakfast 3.00

To Mallard 3.00

Parteraga 4.00



Lunch - - - 2-3

To Glasgow 14-0-4d

Refreshments (tea) 1-2

Postage 1-0

Storage (18 pieces) 4-6

Aug. 17-

Supper bed-breakfast 12-6

Trip (Remy) 1-0

Cassava - - - 5d

Chocolates - - - 6d

[Lint, oil, tea 11-?]

Reps & shoes for bill 6-9

Hair cut - - - 9d

Royal Theatre

Second Show

The Doctor's Dilemma

3-6

Program 3d

Street car 3d

Aug. 18-

Car & Counsel 1/2d

Sax for shoes 6d

Shirt etc 11-6 d.  
 Weather 4 d.  
 Daily Record 1 d.  
 Postage - Books & Bill. 2-3  
 Hotel 1 d. -  
 Meal tip 1 d.  
~~Andrew~~ - 6 d.  
 7 Carfare - - - - 1/2 d.

[Borrowed 2.50 from P. Henderson & Co.]

Photos of Stolland 3 d.  
 Weather 2 d.  
 Sec. Day Storage - - - 2-3 d.  
 Tips for passing baggage 13 d.  
 6 + 3 + 4  
 T.M.C.K. 15 - 0 d.

Aug. 22 - Contribution for Ship Tournament 1 d.  
 23 - Charities (Seaman) 4 d.  
 24 - Telegram for Mary 28 d. - 6 d.  
 25 p.m. 15 p.m.  
 100

Profit

and Receipts

Aug. 25 James Bremson - Stenack  
 who aided with baggage  
 Paid for

Transfer of 10 pieces of baggage  
 89¢ - 10 = \$3.10  
 50¢. Ry 5.72

Ticket Glasgow to Montreal \$110.-  
 Extra baggage 2 @ 10¢

Aug 26. Table Steward \$ 2.00  
 Room " 2.00  
 Lunge " 1.00

Porter on ship 1.00

Excess baggage N.Y. \$ 4.70

Wire to John .60

Ticket N.Y. \$ 14.16

Porter to train  
 at Montreal 1.25

Lunch 1.00

Dinner (2 and 1/2  
 r. ice cream) .50

Porter on ship  
 Personal John } 50.00 } 25  
 53.50 }

Stamps .11

2 purchased .10

Call Log - Baltimore

Cash paid .25

Duty . . . . . 11.60

Telephoning .40

To Kettys. Eat & best 1.05

Ferry .29

Ticket to Reno 105.73

Porterage on baggage .25

Dinner on airplane .10

Aug. 29 Sleeper Single ticket 2.40

Single ticket - Porter .25

" " .10

Storage Parcel Stool .20

Breakfast .70

Telephone to Holly .60

Street car .10

Buffalo - Supper .65

Sleeping car 2.40

Lunch - Evening .65

Hotel Porter Sleeping car .25

" " Carrying .15

Ticket to Holly 2.06

Breakfast .50

Telephoning  
{  
Natie West & Nelson } .10  
Dunkin' Wice

Holly - delivery on telegram .10

Phone to W. H. Lewis .45

Ice cream Soda .10

Price

and Receipt Number



Shirt and Hat \$ 2.25

Teleg. Chicago to Granddaddy .30

Sept. 28 - Express on Cameras

To Destination Office		Prefix	and Receipt Number	
Keno Nevada			244 V 346	
Consignor		Express Date Shipped		Amount
Dr. Church Jr.				.05
Street Address or Non Agency Destination		192		
(951-H) Jersey City, N.J. (L.T.) D.L.&W.		Value Declared		Value Charges
SEPT. 21, 1928		100.00		10
Place - Article		Weight		Express Charges
2 P 124 4000		100		11.95
2 P 124				Total
				12.05
Shipped		Class Paid in Part		C. O. D.
J. E. Church				
Shipper's Street Address		Scale or Date Verified by		Receipt Charges
		230 7/11		2
Received payment by AMERICAN RAILWAY EXPRESS CO., Inc., for charges and amounts entered herein.		(Form 98)		Date Delivered
				192
Received for Express Co. Hour				30

Chicago  
Upper  
Sun  
Poa  
Be  
Di  
Wyo  
B  
Din

Teleg. to Mother .60  
dinner .95

Tip & Sleeping Car Rates .75

Sept 10 - Development  
Keno Studies 17.70

Oct. 5 Pictures (Curtis) 82.50  
= 5.42  
Sept. Nevada Vegetation 14.00  
Oct. 18 - News & Printing  
Panorama . . . 27.50



Sep. 28 - Express on Cameras

Typewriter, photographic  
plates, + keys from

New York to Rand \$12.<sup>05</sup>

Change Expedition for  $\frac{1}{2}$  7<sup>11</sup>

Fred King for  $\frac{1}{6}$  - 24<sup>21</sup>

[later - 10 items parcels as follows  
- Typewriter 10<sup>00</sup>

- Cameras

+ Photographic 50<sup>00</sup>

- My box of keys 28<sup>00</sup>

frids " " " 12<sup>00</sup> ]

So change Expedition 45<sup>00</sup>

Fred 12<sup>00</sup>

Self 43<sup>00</sup>

Rate 11.95 cont. Total 12.<sup>05</sup>

= 5.42

Oct. 5 Pictures (Curtis) 82.<sup>50</sup> ?

Sep. " " " " " 14.<sup>00</sup> ?

Oct. 18 - Mendel + Printing 7<sup>00</sup>  
Panama ... 27.<sup>50</sup> ?



Oct 21 - Bal. on Steamer fare 7.50

Oct. 22 - Express on Sri and  
Snowshoe from Westford 5.00



Oct 21 - Bal. on Steamer Fare 7.50

Oct. 22 - Express to Sri and

790  
Pa

Oct 21 - Bal. on Steam. 4

Expense Account

114.03  
17.10  
16.30  
20.93  
17.49  
16.37

527  
250  
\$777

60.62  
.27  
42.434  
12124  
16,3674

\$ 202.22  
13.27 Dinner  
31.08 Satch

49.15  
.27  
34.405  
9830  
13,2705

87cl

150.00 Appon

115.02 "

20

26.60

17.70

5.42

82.50

14.00

14.00 Recd

22.50

680.31

96.69

2.80

12.05

.45

25

60.20

48.25

51

22

5

110.07

5.07

12 | 153  
    13

Recd 4.86  
\$777.00

90 cl  
40  
130

20 | 90 cl  
    40  
    130

520  
260  
3120

31,212

25  
20  
500

Halls Expedition

Kray - For paper <sup>100</sup> \$2.00  
Kray - Dec. 1 - 5.00

Retaining Passes  
Dec. 8. 6.12

Kray Nov. 30. 5.00

E. Lutz - Camera  
Dec 29 50.00

Kray In full  
Jan. 8 13.10

Small  
Jan 12 35.00

Revised Nov. 10, 1959

Progress Statement Account  
Michigan Greenland Expedition

To: FRANKLIN W. 122

Bill & credit of 1959-1960

Nov 30, 1959. Advanced for computing  
+ Sub E. 6.00

Dec 1

Jan 8. Purchasing materials, Alaska

Jan 13, 1960. Advanced for computing  
+ Sub E. 6.00

Jan 14. Fuel for outfitting  
+ Fuel for truck, Alaska 35.00

2.00  
2.00  
Total 114.00

Jan 17. Photographic materials 5.00

Jan 15. Outstanding 2.00

Feb 4. 150.00 + 1.00 = 151.00

114.00

151.00

Net Bal. due from Expedition

ON

Repaid  
Dec 29 - half Anna 50.<sup>00</sup>

Jan 2 Geo. E. Gray 13.<sup>10</sup>

Jan 12. Amos E. Clark 35.<sup>00</sup>

Jan. 15 - Curtis Studio

Retaining frame 21.<sup>00</sup>

Jan 15 - Curtis Studio 31.<sup>75</sup>  
Pitt

Feb 4 - 100 5x7 prints 22.<sup>50</sup>

Nov. 30 -

East Long Apting 5.<sup>00</sup>

Dec. 1 " " 5.<sup>00</sup>

Nov 8 - Curtis Studio

Retaining frame 6.<sup>12</sup>

88.77

Feb. 4 - 100 - 5x7 prints 22.50

But { deduct  
deduct for personal  
copies

Feb 4 Rubber stamp -

But, an account of Expd.?

*Successor from March 5.12*

If placed regularly on the market this special edition would have to sell at \$2.50, but to get PUTNAM'S HANDY LAW BOOK into the hands of those who will use it and perhaps recommend it to others, OUR SPECIAL OFFER is to send a copy of this flexible edition with round corners and colored edges charges prepaid. If you do not like it, return it at our expense. If you decide to keep it, remit only the price of the ordinary cloth edition, \$1.90, in full payment.

There may not be enough copies in this special binding to supply all who wish them. It would be well, therefore, to fill in and mail the card herewith AT ONCE.

Very truly yours

G. P. PUTNAM'S SONS



Stenciled from Westwood 5.12

Employer and the employee, as a matter of fact

## So Broad Is Its Scope

that there is hardly any one who participates to any extent whatever in the activities of daily life who would not find it useful, time-saving, and economical, really for most people it would undoubtedly save a great many times its small cost. To have this book conveniently at hand

## Will Give One a Feeling of Security

for it is authoritatively prepared, and is a safe guide to our existing laws. It is written in simple untechnical language which can be readily understood by any one. Wherever it has been necessary to use a legal term this has been carefully explained. The arrangement of the volume makes it possible to find immediately any bit of information wished. The explanations are clear and any person of moderate intelligence without any legal training whatever can use *Putnam's Handy Law Book* with pleasure and profit; even those already somewhat familiar with the law will find it extremely convenient.



## The Left-Hand Page Above

is a facsimile of Page 58 of *Putnam's Handy Law Book*. On this page is the last part of the article dealing with "Chauffeur," an important subject for those who have chauffeurs or who have to dodge cars driven by other people's chauffeurs. Here also on this page is the first part of the article covering the subject of "Check," several pages in length and covering fully the legal rights and duties of the drawer of a bank check, of its holder, and of the bank upon which it is drawn. Each of the many subjects in the volume is treated completely, authoritatively and clearly. Note the cross-references to *Automobile* and *Garage-Keeper* at the end of the article on "Chauffeur." In this same way each article is cross-indexed wherever necessary or desirable.

show  
occup  
with  
that  
accep  
and o  
of Au  
Relea  
one o  
entire  
own

## Ignorance of the Law Ex

Snowless from Montreal 5.12



### The Right-Hand Page Above

shows one of the pages of Legal Forms for Every-Day Use, which alone occupy more than 40 pages of the volume. These have been chosen with care, and in many cases several are given for the same purpose so that the one which best fits a particular case can be used. Here are acceptable and authoritative forms: *Agreements, Bills of Sale, Warranty and other Deeds, Mortgages, Leases, Assignments, Subscriptions, Powers of Attorney Transfers, Copartnership Articles, Bonds* of various kinds, *Releases, Wills*, and others, all vastly useful and economical, for even one of them might conceivably save many times the small cost of the entire volume, for the man who may have legal papers to draw on his own behalf, or that of his friends or neighbors.

### Excuses No Man

tion to a fund be cancelled? Page 67.  
Who cannot legally make a contract? Page 65.  
At what moment is a contract considered to be actually closed by correspondence? Page 69.  
If a mistake has been made in a deed, can it be corrected? Page 110.  
Who owns a tree which stands on a boundary line? Page 113.  
Can a person without any interest in property obtain fire insurance thereon? Page 125.  
How much silver and copper coin can legally be tendered in payment of a debt? Page 211.

### Really an Encyclopaedia of Law

for those who are unfamiliar with the subject, for the main arrangement is encyclopaedic, according to the many general subjects treated. These are cross-indexed to each other, and lastly, the complete index at the back of the volume binds the entire book together, making instantly available any particular subject wanted. It would be difficult to devise a system of recording and making available this information, which would be more *convenient* or more *usable* by any one. Here is *the law* boiled down and condensed into a volume which, if desired, can be readily carried in a bag or even the coat pocket.

A.C.



Central Establishment  
ST. GEORGES CROSS  
GLASGOW

Branches:

212 NEW CITY ROAD  
453-455 DUMSBARTON ROAD  
325, 327, 329 MARYHILL ROAD  
292 ARGYLE STREET

Telephone: Douglas 3750

**D. M. HOEY**

Men's and Boys' Outfitter, Clothier and Hosiery

Sold by

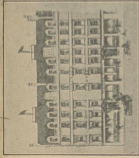
Exd. by

Date

1	Shirt	5	11
3	Collars	2	6
3	Hankies	1	6
1	Shoe	1	3 $\frac{1}{2}$
		11	2 $\frac{1}{2}$



00357 - 19



A.A. \_\_\_\_\_ R.A.C.

Telephones—2529 and 2550 Bell.

**MACKAY'S HOTEL,**  
GLASSFORD STREET,  
GLASGOW, C.1.

192

JAMES RICHARDSON, Proprietor.

*It was a happy  
day when I met you  
with your...*

U.S. Census  
No 55

West. Rogent Street

W George Street

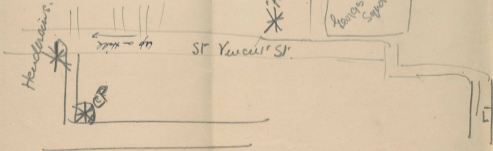
\*A.D.\*

Long's Square

St Yewell St

Hendricks

up - Hill



Passage 107.50  
Ex Passage - 12.15  
Trav Exp 180. —  
Cash 200.35

---

500.00

Car money 18. —

Anchor-Donaldson

Andonia ... Aug. 18

[Anchor-Donaldson Lim.  
St. Vincent Pl.

23<sup>1/2</sup> 15<sup>1/2</sup>. 26<sup>2/3</sup>.

Canada White Star

Laurentic - Sat. Aug. 18

[153 St. Vincent St.

P. Henderson + Co. @ Central 9467

Canadian Pacific

Montreal - Sat. Aug. 18

25 Bethnell St., C. 2

A. Ritchie & Co.

Water van.

Queen St. 6-6:15 pm

By Carriage

Central 5740

at Dept. of Agriculture Office.

Quebec Daily Record  
Aug. 17.

Evening Times Aug. 17.

Doctor Bill -

Fees to Egbertsonide \$10.<sup>00</sup>  
" " Sauerstoff 10.<sup>00</sup>  
" " Murea Kr 25.<sup>00</sup>  
Tipes Kr 10.<sup>00</sup>  
Kaysa Messinger Driva  
to Sauerstoff Kr 54.<sup>00</sup>

---

Received July 4, 1928 -

From Dr. Hobbs \$500.<sup>00</sup>

July 6 . . . . . Kr 100.<sup>00</sup>

July 5 . . . . . Clear  
for Swanson  
Airtex 100.<sup>00</sup>

---

Paid by Ralph in United 20.<sup>00</sup> Cr  
Packing Expenses 5.<sup>00</sup>

---

Wants

Read Dr. Hobbs 1927

For Expenses . . . \$250.<sup>00</sup>



# MITROPA

Mitteleuropäische Schlafwagen-  
und Speisewagen-A.-G.

Direktion: BERLIN NW 7

ZUG No. DATUM

790 \*  
1920 25. 5/137

Spiegelhaus  
Serie Pa

Vordr. 26

	RM	PL
1. Frühstück . . . . .		5
Mittagessen . . . . .		5
Abendessen . . . . .		5
Kaffee . . . . .		
Bier . . . . .	2	00
<i>Handwritten scribbles</i>		20
<i>Handwritten scribbles</i>		365
<i>Handwritten scribbles</i>		20
zusammen einschl. Bedienung		401

Die Rechnung sowie der anhängende Kontroll-Abschnitt müssen  
den bezahlten Betrag angeben.

**Diese Rechnung ist für den Reisenden bestimmt.**

*Snafinu Via bitten die Rückseite*

*Erklärung*

# PAUL KLEPSCH & SOHN BISCHOFSWERDA SACHSEN



Bedeutendste Spezialfabrik für

## DURCHSCHREIBE-BÜCHER



Verlangen Sie bitte unsere Vorschläge  
für das Rechnungswesen aller Art zum  
Durchschreiben mit dem Achatstift  
oder Durchschlagen mit der Maschine

Vertretungen auf allen größeren Plätzen Deutschlands

In Berlin vertreten durch OTTO BUTSCH, Papierhandlung, BERLIN SW 48  
Friedrichstraße 4. • Fernruf: Amt Dönhoff Nr. 3093 und 3094

- Das  
...  
- Name  
St  
tar  
sic -  
St. J.  
ne + Co.  
Pacific  
Lun  
schne  
-  
t & Co  
van  
6-6:  
Office  
Recor  
Aug. 1  
Aug

*Anchor - Donaldson*

AMERICAN RAILWAY EXPRESS COMPANY  
(INCORPORATED)

(Printed in U.S.A.)

ORIGINAL (Form 5075)  
UNIFORM EXPRESS RECEIPT

FROM **JERSEY CITY, N. J.**

(5075)

NON-NEGOTIABLE **COLLECT** No. **244-546**

Jersey City, N. J. Date *Sept 1* 192*8*

Received from *J. E. Church*

Address *100 St. Charles St*  
subject to the Classification and Tariffs in effect on date of issue

Article *2 cases* Weight *100*

Consigned to *Rev. J. E. Church* Return Charges

At *Reno Nev*  
Number Street City State

Value herein declared *100* Dollars  
by Shipper to be

which the Company agrees to carry upon the terms and conditions printed on the back hereof, to which the shipper agrees, and as evidence thereof, receipt and signs this receipt.

*J. E. Church* For the Shipper  
*Frederick* For the Company

Date	
Number Pieces	Weight
C. O. D.	Declared Value
Return Charges	

**NOTE**

The Company will not pay over \$50, in case of loss, or 50 cents per pound, actual weight, for any shipment in excess of 100 pounds, unless a greater value is declared and charges for such greater value paid.

*Slogans Daily Record*  
*aug. 17.*  
*Evening Times Aug. 17.*

Anchor-Donaldson  
Andania . . . Aug. 18

### TERMS AND CONDITIONS

1. The provisions of this receipt shall inure to the benefit of and be binding upon the consignor, the consignee, and all carriers handling this shipment, and shall apply to any reassignment, or return thereof.
2. In consideration of the rate charged for carrying said property, which is dependent upon the value thereof and is based upon an agreed valuation of not exceeding fifty dollars for any shipment of 100 pounds or less, and not exceeding fifty cents per pound, actual weight, for any shipment in excess of 100 pounds unless a greater value is declared at the time of shipment, the shipper agrees that the company shall not be liable in any event for more than fifty dollars for any shipment of 100 pounds or less, or for more than fifty cents per pound, actual weight, for any shipment weighing more than 100 pounds, unless a greater value is stated herein. Unless a greater value is declared and stated herein the shipper agrees that the value of the shipment is as last above set out and that the liability of the company shall in no event exceed such value.
3. Unless caused by its own negligence or that of its agents, the company shall not be liable for:
  - a. Difference in weight, or quantity caused by shrinkage, leakage, or evaporation.
  - b. The death, injury, or escape of live freight.
  - c. Loss of money, sealion, bonds, coupons, jewelry, precious stones, valuable papers, or other matter of extraordinary value, unless such articles are enumerated in the receipt.
4. Unless caused in whole or in part by its own negligence or that of its agents, the company shall not be liable for loss, damage, or delay caused by—
  - a. The act of the shipper or carrier.
  - b. The nature of the property, or defect or inherent vice therein.
  - c. Improper or inequivalent packing, securing, or stowage.
  - d. The Act of God, public enemies, authority of law, quarantines, riots, strikes, pests of navigation, the hazards or dangers incident to a state of war, or occurrence in customs warehouse.
  - e. The examination by, or partial delivery to, the consignee of C.O.D. shipments.
  - f. Delivery under instructions of consignor or consignee at stations where there is no agent of the company after such shipments have been left at such stations.
5. Packages containing fragile articles or articles consisting wholly or in part of glass must be so marked and be packed so as to insure safe transportation by express with ordinary care.
6. When consigned to a place at which the express company has no office, shipments must be marked with the name of the express station at which delivery will be accepted or be marked with forwarding directions if to go beyond the express man's line by a carrier other than an express company. If not so marked consignment will be refused.

7. Except where the loss, damage, or injury complained of is due to delay or damage while being loaded or unloaded, or damaged in transit by carelessness or negligence, no conditions precedent to recovery claims must be made in writing to the originating or delivering carrier within six months after delivery of the property or, in case of failure to make delivery, then within six months and fifteen days after date of shipment; and suits for loss, damage or delay shall be instituted only within two years and one-day after the date when notice in writing is given by the carrier to the claimant, that the carrier has disallowed the claim or any part or parts thereof.
8. If any C. O. D. is not paid within thirty days after notice of non-delivery has been mailed to the shipper the company may at its option return the property to the consignor.
9. Free delivery will not be made at points where the company maintains no delivery service; at points where delivery service is maintained free delivery will not be made at addresses beyond the established and published delivery limits.
- Special Additional Provisions as to Shipments Forwarded by Vessel from the United States to Places in Foreign Countries.
10. If the destination specified in this receipt is in a foreign country, the property covered hereby shall, as to transit over ocean routes and by their foreign connections to such destination, be subject to all the terms and conditions of the receipts or bills of lading of ocean carriers as accepted by the company for the shipment, and of foreign carriers participating in the transportation, and as to such transit is accepted for transportation and delivery subject to the acts, laws, regulations, and customs of over-sea and foreign carriers, custodians, and governments, their employees and agents.
11. The company shall not be liable for any loss, damage, or delay to said shipments over ocean routes and their foreign connections, the destination of which is in a foreign country, occurring outside the boundaries of the United States, which may be occasioned by any such acts, laws, regulations, or customs. Claims for loss, damage or delay must be made in writing to the carrier at the port of export or to the carrier issuing this receipt within nine months after delivery of the property at said port or, in case of failure to make such delivery, then within nine months and fifteen days after date of shipment; and claims so made against said delivering or issuing carrier shall be deemed to have been made against any carrier which may be liable hereunder. Unless claims are so made the carrier shall not be liable.
12. It is hereby agreed that the property destined to such foreign countries, and accessible with foreign governmental or customs duties, taxes, or charges, may be stopped in transit at foreign ports, frontiers or depositories, and there held pending examination, assessments, and payments, and such duties and charges, when advanced by the company, shall become a lien on the property.

Slogans Daily Record  
Aug. 17.  
Evening Times Aug. 17.

# H. Struers chemiske Laboratorium

Skindergade 38 — København K.

Telefon: Central 1402

„ 1423

„ 14968

Ved alle Numre Omstilling til:  
Kontor, Analytisk Laboratorium.  
Ekspedition af Apparater.  
Ekspedition af Kemikalier.

Navn .....

Adr. ....

Eksped.                      Dato *3-6-21*                      Kr.                      Øre

*150 Narkosepulver*

*36 refer. 100 = 3/80*                      5,                      70

5, 70

Betalt

*L. La. P. Struup*

00964

33



# H. Struers chemiske Laboratorium.



Udsalg af alle Slags  
Instrumenter og Apparater  
til kemisk, mikroskopisk og  
bakteriologisk Brug.

Fysiske Apparater til Skolebrug.

*Kemikalier til videnskabelig,  
teknisk og fotografisk Brug.*

Analytisk Laboratorium.

Sept 10 1928

To My Church  
Lens Studio

Dr.

Terms.

Billhead No. 29

Kodak Wash	5x7 Negatives	11 25
" "	Leica "	5 40
" "	" "	1 05
		<u>17 70</u>

Paid  
Lens Studio  
E. Fusch

1770

No legal liability attaches to the Postmaster-General in respect of the issue of this Certificate.

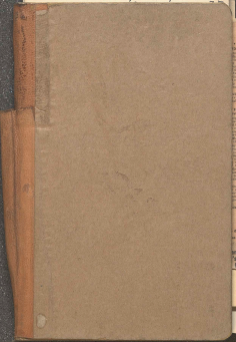
The conditions governing the payment of compensation in the event of the loss or damage of parcels in the post are fully explained in the Post Office Guide, as are those relating to the registration of Inland parcels and the insurance of parcels addressed to certain British Possessions and Foreign Countries.

(5148) W(40151, 143 300m(14) 12/27 J.P. G22

(5564) W(642/1538 490m 5/28

Can







*Review of ...*

*History*

**FARRELL  
RESTAURA**

fully licensed

**17 Hope St**

Music 8

7 - 10

Supper

LV HOBOKEN 105A - WEDNESDAY  
AR BINGHAMTON - 630A "  
DEP " LACKAWANNA No 3 - 325P  
AR Buffalo 655 pm "  
LV " Michigan Cent.  
AR Detroit - 625 am THURSDAY  
LV " PERE MARQUETTE 855 E.S.T.  
AR Holly - 950 Am - CSTIME  
DK Holly - 615 pm for FLINT.  
LV FLINT GRAND TRUNK 10 PM.  
AR LANSING 1155 PM  
DEP LANSING M C R R 825 AM <sup>Friday</sup>  
AR JACKSON 925 AM  
LV " 945 AM  
AR CHICAGO 230 PM  
LV " C & N W 830 PM  
PASS CHEYENNE 1010 PM Sat.  
THRU NEVADA SUNDAY  
AR RENO #40A MONDAY  
SEP 3<sup>RD</sup>

- Receipts -

For Expenses - From Eastern Holly  
 Draft (Expenses) 500.<sup>00</sup>  
 Cash 100.<sup>00</sup>

Cheek (from East Holly) 100.<sup>00</sup>

For Payment of Luncheon from Ralph Adams  
 20.<sup>00</sup>

Extra the used for passing  
 50.<sup>00</sup>

7<sup>th</sup>  
 Expenses -

July 11 - Stephen Olson - Helping  
 take passengers 1.00

" Time for making our  
 cushions to get out at 25

" 12 - To Strand and Two Kings  
 - Dinner 6.00

July 12 - To "Boats" for passing  
 2 Kings passage & boat 1.00

Note book & pipe . . . . . 95

" 13 - At Jacobsholm  
 To two guides 3.00

July 14. Ballaun. To two boats  
for carrying luggage &

July 14 ~~Winnipeg~~ ~~Expenses~~ 1.00 Ks  
To ~~Ball~~ ~~Ball~~ 1.00 Ks

Winnipeg - Water boat & ferry 3.50 Ks  
Water boat on ~~Ball~~ 5.00 Ks

Winnipeg -

For clearing water boat  
loaned by ~~Ball~~ Anderson  
for trip to Island Ina 3.00 Ks

To girls & boy for making  
me out to photographs  
iceberg - 1 m. photo 2.00 Ks

[ One-half share of boat to Ball &  
Anderson with receipt ]  
if Mack O'Neil accept.

Aug. 15 - Tips - Hans Egede  
10 Ks + 10 Ks + 5 Ks 25.00 Ks  
= 42.50 Ks = [33]  
Supper 2.00 - 6.00 Ks

Aug. 16 - To Enla 11 - 1  
near foot 3 - 11  
To Hattail 3 - 10  
Pasteraga 4 - 0

Surf - - - - 2-3

To Glasgow 14-0-4d

Refreshments (tea) 1-2

Postage 1-0

Storage (18 pieces) 4-6

Aug. 17-

Supper & breakfast 12-6

Tip (Barrow) 1-0

Carriage - - - - = 5d

Chocolate - - - - 6.

(Shirt, collars, tie 11-?)

Refs & check for bill 6-9

Hair cut - - - - 9d

Royal Theatre

General Show

The Barber's Dilemma

3-6

Program 3d

Street car 3d

Aug. 18 -

Car & Counsel 9d

Spec for check 6d

	Shirts etc	11-6 d.
	Weather	4 d.
	Daily Record	1 d.
	Postage - Out & Bill	2-3
	Hotel	1 d. -
	Meal tip	1 d.
	<del>Admission</del>	- 6 d.
7	Carfare - - - -	1/2 d.

[Received 252 from P. Henderson Mo.]

	Photos of Skotland	3 d.
	Weather	2 d.
	See Day Storage - - -	2-3 d.
	Tips for passing baggage 6 4 3 + 4	13 d.
	Taxi	15 - 0 d.

Aug. 22. Contribution for  
Ship Tournament 1 d.  
23 - Charities (Easman) 4 d.  
24 - Telegram for Mandy 2 d. - 1 d.  
18 1/2 d.



Aug. 25 James Brennan - Steward  
 into initial with baggage  
 Paid him 1.00

Transfer of 10 pieces of baggage  
 89¢ - 10 = \$3.10  
 5.00 by 5.2

Ticket Glasgow to Montreal \$10.00  
 Excess baggage 26.00

Aug 26. Table Steward \$ 2.00  
 Room " " 2.50  
 Lunch " " 1.00

Porter another 1.00

Excess baggage 3.75

Wire to John .63

Ticket N.Y. \$14.16

Porter to train  
 at Montreal 1.25

Lunch 1.00

Dinner (2 dishes  
 + ice cream) .50

Porter to train }  
 Personal from } 53.00 net } .25

Stamps 1.11

Personal 1.00

Callery - Returns

Com food	.25
[ Duty . . . . . ]	11.60
Telephoning	.40
To Kalya. Catered	1.05
Ferry	.29
Ticket to Reno	105.73
Porterage on baggage	.25
Dinner on baggage	.10
Aug. 19 Sleeper Binghamton	2.40
Binghamton - Porter	.25
"	.10
Storage Parcel Stand	.20
Breakfast	.70
Telephone to Holly	.60
Street car	.10
Buffalo - Supper	.65
Sleeping car	2.40
lunch - evening	.65
<hr/>	
Buffalo	
Porter Sleeping car	.25
" - Carrying	.15
Ticket to Holly	2.06
Breakfast	.50
Telephoning	
with Mrs. Wilson	
Pauline & Vic	.10
Holly - delivery on telegram	.10
Phone to W. H. Lewis	.45
Ice cream Soda	.10

Shirt and socks 2.25

Tel. & Granddaddy .30

Chewing and anti cap 1.00

to passing  
[or done in winter at half]

Lunch to Jackson . 1.34

lunch . . . . . 55

Chicago

Upper South to Reno 17.30

Supper + 2c in total { .55

Peaches . 25

Breakfast . 70

Dinner + some more { 1.30

Supper 1.10

Breakfast . 70

Dinner . 60

Tel. to Mother . 60

lunch . 95

Tip to Sleeping Car Porter 75

Self 1.0 - Breakfast

Rain Studies 17.70

Sep. 28 - Express on Camera

Typewriter, photographic  
plates, + negatives from

Wesley to Rand \$12.<sup>05</sup>

Change Expedition for  $\frac{1}{6}$  7<sup>it</sup>.

Fuel being for  $\frac{1}{6}$  - 4 $\frac{1}{2}$ .

[List - steam parcels as follows  
Typewriter 10<sup>00</sup>

Camera

+ Photographic 50<sup>00</sup>

My box of negatives 28<sup>00</sup>

fuel " " " 12<sup>00</sup> ]

So change Expedition 45<sup>00</sup>

Fuel 12<sup>00</sup>

Self 43<sup>00</sup>

Rate 11.95 cont. Total 12.<sup>05</sup>

Oct. 5 - Pictures (copies) 82.<sup>50</sup> ?

Sep. - several Negatives 14.<sup>00</sup> ?

Oct. 18 - Receipt Printing  
Panorama . . . 27.<sup>50</sup> !

We Suggest That When Ordering  
You Specify

Ship by **AMERICAN RAILWAY EXPRESS**

To Destination Office

Fruit

and Receipt Number

Consignor

Direct Address or Non Agency Destination

Exact Date Shipped

Carriage

Pieces

Articles

Description

Value Declared

Value Charge

Shipped

Class

Paid in Part

C. O. D.

Shipper's Street Address

RECEIPT  
FOR  
CHARGES

Scale or Rate

Verified by

Insure Charge

Insured against by AMERICAN RAILWAY EXPRESS CO., Inc., for charges and amounts enclosed herein.

Form 101

Date Delivered

101

Received For Express Co. No.

M.

Keno Nevada  
 Dr. Church Jr.  
 21

244 ✓ 3/6

(951-H) Jersey City, N.J. (L.T.) D.L.&W.  
 SEPT. 21, 1928

100  
 100 00

2 P 124  
 2 P 124  
 4000

100  
 11 95  
 Total  
 12 05

Dr. Church

230 7/8

2

X

Oct 21 - Bal. on Steamer Fare 7.50

Oct. 22 - Express on Dr. and  
Snowshoes from Westford 5.95





Expenses Account

114.03			
17.10			
16.30		527	
20.93		250	
17.49		<u>777</u>	
16.57			
			601.62
			.27
			<u>4243</u>
			12124
			<u>16,367</u>

202.22	Amount		
13.27	Spent		
31.06	Spent		
150.00	Advance		
15.02			
26.60			
17.70			
5.42			
82.00			
14.00	Red		
22.00	Red		
		4.86	
		<u>153</u>	25
		13	<u>500</u>

680.31			
		96.69	
		<u>280</u>	
			90.00
			40
			<u>130</u>
			.24
			520
			<u>260</u>
			0
			<u>3112</u>

Oct 21 - Bal. on Statement Jan 7.50

12.05			
.45			
60.25		3.73	
48.20		1.29	
54.22		<u>110.07</u>	
			15.00

Hobbs Expedition

Gray - For paper 2.00

Gray - Dec. 1 - 5.00

Attending Person

Dec. 8. 6.12

Gray Nov. 30. 5.00

E. Ledy - Census

Dec 29 50.00

Gray In full  
Jan. 8

13.13

Small

Jan 12

35.00

Reno, Nevada, Feb. 10, 1929.

Progress Statement of Account  
Michigan General Expenditures

To J. S. Church M. 142

Bal. to Credit of Expenditures \$58.94

Nov 30 1928. Advanced for Comptrolry  
to Geo. E. Long 7.<sup>00</sup>

Dec. 1

7.<sup>00</sup>

Nov. 8. Retaining Payments: General.  
to Geo. E. Long 5.<sup>00</sup>

5.<sup>00</sup>

6.<sup>12</sup>

Jan. 13, 1929. Advanced for Comptrolry  
to Geo. E. Long 13.<sup>10</sup>

13.<sup>10</sup>

Jan. 14. Paid for distributing  
Transcripts Nevada 35.<sup>00</sup>

35.<sup>00</sup>

to Geo. E. Long  
and Geo. E. Church

To Howard E. Church 3.<sup>25</sup>

Jan. 14. Photographs -  
to Geo. E. Church 2.<sup>00</sup>

2.<sup>00</sup>

Jan. 15. Retaining of  
to Geo. E. Church 22.<sup>50</sup>

22.<sup>50</sup>

Feb. 4. 150. 547  
to Geo. E. Church 1.<sup>00</sup>

1.<sup>00</sup>

Feb. 4. 1. Order of  
to Geo. E. Church 114.<sup>72</sup>

114.<sup>72</sup>

---

Total \$57.12

with Bal. due from Expenditures \$57.12

Revised Memoirs Vol. 10, 1929

Programs Statement Account  
Michigan Educational Experiment

To: P. S. Churchly

102

Doc. # 1000, Station # 1000

Revised Memoirs Vol. 10, 1929

4 Sub 2, 2, 7

1.00

5.00

6.00

4 Sub 2, 2, 7

13.00

4 Sub 2, 2, 7

15.00

16.00

4 Sub 2, 2, 7

17.00

18.00

19.00

20.00

17.00

1000

Revised

Nov 29 - Leafy America 50.<sup>00</sup>

Jan 2 - Geo. F. Gandy 13.<sup>10</sup>

Jan 12 - Double E. Travel 55.<sup>00</sup>

Jan. 15 - Curtis Studio

Retaining Invoice 21.<sup>00</sup>

Jan 15 - Curtis Studio 30.<sup>75</sup>

Print

Feb 4 - 100 5x7 prints 22.<sup>50</sup>

Nov. 30 -

Leafy America 50.<sup>00</sup>

Nov. 1 " " 57.<sup>00</sup>

Nov 8 - Curtis Studio

Retaining Invoice 6.<sup>12</sup>

88.<sup>12</sup>

Feb 4 - 100 - 5x7 prints 22.<sup>50</sup>

Nov {deduct } (to amount)

Feb 4 - Rubber Stamp -

Feb. 4 - an account of Exped. ?

If placed regularly on the market this special edition would have to sell at \$2.50, but to get PUTNAM'S HANDY LAW BOOK into the hands of those who will use it and perhaps recommend it to others, OUR SPECIAL OFFER is to send a copy of this flexible edition with round corners and colored edges charges prepaid. If you do not like it, return it at our expense. If you decide to keep it, remit only the price of the ordinary cloth edition, \$1.90, in full payment.

There may not be enough copies in this special binding to supply all who wish them. It would be well, therefore, to fill in and mail the card herewith AT ONCE.

Very truly yours

G. P. PUTNAM'S SONS

Employer and the employee, as a matter of fact

## So Broad Is Its Scope

that there is hardly any one who participates to any extent whatever in the activities of daily life who would not find it useful, time-saving, and economical, really for most people it would undoubtedly save a great many times its small cost. To have this book conveniently at hand

## Will Give One a Feeling of Security

for it is authoritatively prepared, and is a safe guide to our existing laws. It is written in simple untechnical language which can be readily understood by any one. Wherever it has been necessary to use a legal term this has been carefully explained. The arrangement of the volume makes it possible to find immediately any bit of information wished. The explanations are clear and any person of moderate intelligence without any legal training whatever can use *Potnam's Handy Law Book* with pleasure and profit; even those already somewhat familiar with the law will find it extremely convenient.

## The Left-Hand Page Above

is a facsimile of Page 58 of *Potnam's Handy Law Book*. On this page is the last part of the article dealing with "Chauffeur," an important subject for those who have chauffeurs or who have to dodge cars driven by other people's chauffeurs. Here also on this page is the first part of the article covering the subject of "Check," several pages in length and covering fully the legal rights and duties of the drawer of a bank check, of its holder, and of the bank upon which it is drawn. Each of the many subjects in the volume is treated completely, authoritatively and clearly. Note the cross-references to *Automobile* and *Garage-Keeper* at the end of the article on "Chauffeur." In this same way each article is cross-indexed wherever necessary or desirable.

## Ignorance of the Law Excuses No Man

## The Right-Hand Page Above

shows one of the pages of *Legal Forms for Every-Day Use*, which alone occupy more than 40 pages of the volume. These have been chosen with care, and in many cases several are given for the same purpose so that the one which best fits a particular case can be used. Here are acceptable and authoritative forms: *Agreements, Bills of Sale, Warranty and other Deeds, Mortgages, Leases, Assignments, Subscriptions, Powers of Attorney Transfers, Copartnership Articles, Bonds of various kinds, Releases, Wills*, and others, all vastly useful and economical, for even one of them might conceivably save many times the small cost of the entire volume, for the man who may have legal papers to draw on his own behalf, or that of his friends or neighbors.

tion to a fund be cancelled? Page 87.

Who cannot legally make a contract? Page 65.

At what moment is a contract considered to be actually closed by correspondence? Page 89.

If a mistake has been made in a deed, can it be corrected? Page 110.

Who owns a tree which stands on a boundary line? Page 113.

Can a person without any interest in property obtain fire insurance thereon? Page 133.

How much silver and copper coin can legally be tendered in payment of a debt? Page 211.

## Really an Encyclopaedia of Law

for those who are unfamiliar with the subject, for the main arrangement is encyclopaedic, according to the many general subjects treated. These are cross-indexed to each other, and lastly, the complete index at the back of the volume binds the entire book together, making instantly available any particular subject wanted. It would be difficult to devise a system of recording and making available this information, which would be more convenient or more usable by any one. Here is the law boiled down and condensed into a volume which, if desired, can be readily carried in a bag or even the coat pocket.



Central Establishment  
ST. GEORGES CROSS  
GLASGOW

Branches:  
112 NEW CITY ROAD  
453-455 DUMBARTON ROAD  
325-327, 329 MARSHALL ROAD  
202 ARGYLE STREET  
Telegrams: Douglas 3709

**D. M. HOEY**

Men's and Boys' Outfitter, Clothier and Hosiery

Sold by

Each by

Date

1	Shirt	5	11
3	Collars	2	6
3	Stocks	1	6
1	Shoe	1	3 $\frac{1}{2}$
		11	2 $\frac{1}{2}$



00357 - 19

A.A. \_\_\_\_\_ R.A.C.

Telephones—8029 and 2830 Bell

# MACKAY'S HOTEL,

GLASSFORD STREET,

GLASGOW, C1,

199



JAMES RICHARDSON, Proprietor.

NEW



U.S. Census  
No 55

West Point Street

W George Street

Henderson



\*A.D.

George Street

St Yucca St

Passage	107.50
Carriage	12.15
Trunks	180. —
Cash	200.35
	<hr/>
	500.00

Carriage 18. —

Reactor Bill -

Fee to Expeditioner \$10.00  
" " Successful 10.00  
" " Return Rs 20.00  
Tolls Rs 10.00  
Kayan Messengers Service  
to Suwayit Rs 54.00

Received July 4, 1928 -

From Lt. Walker \$500.00

July 6. . . . . Rs 100.00

July 8. . . . . Rs 100.00

July 8. . . . . Rs 100.00

Paid by Bill in London 20.00  
By Paying Expenses 5.00

Amount

Received at Hobbs 1927

For Expenses... \$250.00

June 21. 6-6-1927

By Boeing

at Dept. of Navy Office.

Central 5740

Aisher-Ronaldson

# MITROPA

Mitteleuropäische Schlafwagen-  
und Speisewagen-A.-G.

Direktion: BERLIN NW 7

ZUG No. DATUM

790 28  
1920 1917

Reisekarte  
Serie Pa

Vordr. 30

	RM	Pf.
1. Frühstück		5
Mittagessen		80
Abendessen		80
Kaffee		
Bier		
<i>2 Hauptstb</i>		2.00
<i>1/2</i>		20
<i>10.00</i>		265
		26
zusammen einschl. Bedienung		407

Die Rechnung sowie der anhängende Kontroll-Abschnitt müssen den bezahlten Betrag angeben.

Diese Rechnung ist für den Reisenden bestimmt.

*Langsam Via Litta Via Rückfahrt*

# PAUL KLEPSCH & SOHN BISCHOFSWERDA SACHSEN



Bedeutendste Spezialfabrik für

## DURCHSCHREIBE-BÜCHER



Verlangen Sie bitte unsere Vorschläge  
für das Rechnungswesen aller Art zum  
Durchschreiben mit dem Achatstift  
oder Durchschlagen mit der Maschine

Vertretungen auf allen größeren Plätzen Deutschlands

In Berlin vertreten durch OTTO BUTSCH, Papierhandlung, BERLIN SW 46  
Friedrichstraße 4. • Fernruf: Amt Dänkeff Nr. 3093 und 3494

Anchor-Danaldson

AMERICAN RAILWAY EXPRESS COMPANY  
INCORPORATED

(Printed in U.S.A.)

ORIGINAL (Form 5075)  
RAILROAD EXPRESS RECEIPT

FROM JERSEY CITY, N. J.

(5075)

NON-NEGOTIABLE **COLLECT** No **244-546**

Jersey City, N. J. Date July 1 1928

Received from J. E. Church

Address 1400 11th St

Article Case Weight 100

Consigned to Rev. Dr. Church

At Reno Nev

Value herein declared by Shipper to be 100.00 Dollars

J. E. Church For the Shipper  
[Signature] For the Company

LEWISIANA TERMINAL  
HOUSTON, TX

Date	
Number Pieces	Weight
C. U. D.	Declared Value
Returns Charges	

**NOTE**

The Company will not pay over \$50, in case of loss, or 50 cents per pound, actual weight, for any shipment in excess of 100 pounds, unless a greater value is declared and charges for such greater value paid.

Blaguer Daily Record  
Aug. 17.  
Evening Times Aug. 17.

Aisher Donaldson  
London Aug 18

### TERMS AND CONDITIONS

1. The provisions of this receipt shall have in the benefit of and be binding upon the consignee, the consignee, and all carriers handling this shipment, and shall apply to any reshipment, or return thereof.
2. In consideration of the rate charged for carrying said property, which is dependent upon the value thereof and is based upon an agreed valuation of not exceeding fifty dollars for any shipment of 100 pounds or less, and not exceeding fifty cents per pound, actual weight, for any shipment in excess of 100 pounds, unless a greater value is declared at the time of shipment, the shipper agrees that the consignee shall not be liable in any event for more than fifty dollars for any shipment of 100 pounds or less, or for more than fifty cents per pound, actual weight, for any shipment weighing more than 100 pounds, unless a greater value is stated hereon. Unless a greater value is declared and stated hereon the shipper agrees that the value of the shipment is as set above set out and that the liability of the consignee shall in no event exceed such value.
3. Unless caused by its own negligence or that of its agents, the company shall not be liable for—
  - a. Difference in weight, or quantity caused by shrinkage, leakage, or evaporation.
  - b. The death, injury, or disease of live freight.
  - c. Loss of money, letters, bonds, coupons, jewelry, precious stones, watches, papers, or other articles of extraordinary value, unless such articles are encased in the receipt.
4. Unless caused by whole or in part by its own negligence or that of its agents, the company shall not be liable for loss, damage, or delay caused by—
  - a. The act of the shipper or owner.
  - b. The nature of the property, or defect or inherent vice therein.
  - c. Fire or other fire insurance, war, or piracy.
  - d. Fire or other fire insurance, war, or piracy.
  - e. The act of God, public enemies, epidemics of live, quarantined, rick, strikes, ports of navigation, the hazards or dangers incident to a state of war, or occurrence in customs warehouses.
  - f. The cause being fire, or partial delivery to, the consignee of EXCEL shipments.
  - g. Delivery under a contract of consignment or consignment of business where there is no agent of the company after such consignment has been left at such address.
5. Packages containing fragile articles or articles containing liquids or in part of glass must be so marked and be packed so as to insure safe transportation by express with ordinary care.
6. When consigned to a place at which the express company has no office, shipments must be marked with the name of the express station at which delivery will be accepted, or be marked with forwarding directions as to go beyond the express works line by a carrier other than an express company. If not so marked claims will be refused.

7. Except where the loss, damage, or injury complained of is due to delay or damage while being loaded or unloaded, or damaged in transit by carelessness or negligence, or conditions precedent to recovery claims must be made in writing to the originating or delivering carrier within six months after delivery of the property or to the consignee absolute to make delivery there within six months and fifteen days after date of shipment; and suits for loss, damage or delay shall be instituted only within two years and one day after the date when notice in writing is given by the carrier to the claimant, that the carrier has disallowed the claim or any part or parts thereof.
8. This receipt is not valid until thirty days after notice of receipt has been filed to the shipper the company may at its option return the property to the consignor.
9. Free delivery will not be made at points where the company maintains no delivery service; at points where delivery service is maintained the delivery will not be made at addresses beyond the established and published delivery limits. Special Additional Provisions as to Shipments Forwarded by Vessel from the United States to Places in Foreign Countries.
10. If the destination specified in this receipt is in a foreign country, the company covered hereon shall, in so far as it is not otherwise stated and by their foreign connections to such destination, be subject to all the terms and conditions of the receipts or bills of lading of such carriers, as accepted by the company for the shipment, and of foreign customs pertaining in the transportation, and as to such transit is accepted for transportation and delivery subject to the acts, laws, laws, regulations, and customs of overseas and foreign carriers, customs, and governments, their employees and agents.
11. The company shall not be liable for any loss, damage, or delay to said shipments over ocean routes and their foreign connections, the destination of which is in a foreign country, occurring outside the boundaries of the United States, which may be occasioned by any such acts, laws, regulations, or customs. Claims for loss, damage or delay must be made in writing to the carrier at the port of export or to the carrier issuing this receipt within nine months after delivery of the property at said port or, in case of failure to make such delivery, then within nine months and three days after the date of shipment; and claims so made against said delivering or landing carrier shall be deemed to have been made against the carrier which may be liable hereunder. Unless claims are so made the carrier shall not be liable.
12. It is hereby agreed that the consignor declares in such foreign countries, and acceptable with foreign governments or customs duties, taxes, or charges, may be accepted in transit at foreign ports, freights or exportations, and there held (pending examination, measurement, and payment, and such duties and charges, when advanced by the company, shall become a lien on the property.

Shanghai Daily Record  
Aug 17.  
Arriving Tientsin Aug 17.







# H. Struers chemiske Laboratorium.



Udsalg af alle Slags  
Instrumenter og Apparater  
til kemisk, mikroskopisk og  
bakteriologisk Brug.

Fysiske Apparater til Skolebrug.

*Kemikalier til videnskabelig,  
teknisk og fotografisk Brug.*

Analytisk Laboratorium.

Sept 10 1925

To My Church  
 Lens Studio Dr.

Terms

Billhead No 28

Kodak Work	5x7 Negatives	11 25
" "	Leica "	5 40
" "	" "	1 05

Paid  
 Lens Studio  
 E. French

17 70

aug. 17.  
 Evening Times Aug. 17.

P. D. 22.

PARCEL POST.

Address of Parcel Post in Registered Island Parcel or of a  
Military, Seaman, Hospital or Foreign Parcel.

A Parcel may be addressed as under:

GERMANY, STYRELSE  
Cop. KUNAGEN, DENMARK.  
To Holstenborg, Grenland

A complete list of  
Signatures is given

This notice should  
not be used in any  
address for parcels.

The weight and the FULL address. The Document  
is not a parcel post if the full address  
is not given.

23



No legal liability attaches to the Postmaster-General in respect of the issue of this Certificate.

The conditions governing the payment of compensation in the event of the loss or damage of parcels in the post are fully explained in the Post Office Guide, as are those relating to the registration of inland parcels and the insurance of parcels addressed to certain British Possessions and Foreign Countries.

POST OFFICE GENERAL  
POST OFFICE GENERAL  
POST OFFICE GENERAL

Anchor-Donaldson

Andonia . . . Aug. 18

[Anchor-Donaldson lin.  
St. Vincent St.]

23<sup>rd</sup> 18<sup>th</sup>. 26 Aug.

Canada White Star

Laurentic - Sat. Aug. 18

[153 St. Vincent St.]

P. Henderson + Co. @ Central 9467

Canadian Pacific

Montreal - Sat. Aug. 18

25 Borchell St., Q. 2

A. T. & Co.

Water van.

Queen St. 6-6:15 pm

By Carriage

Central 5740

& left baggage Office.

Stagano Daily Record  
Aug. 17.

Evening Times Aug. 17.

Macoy's Hotel. Elmfield 204  
Troygate.

The Star Apartment White Star Building.

C.P. & O. <sup>St.</sup> Rochelle, 25

- <sup>St.</sup> Henderson Co. 153 Vincent St.  
White Star (Central 946)

Danlan Co. 14 St. Vincent

- Thomas Co. 83 Adams St.

Ames Exp. Co. 3 W. Hill St.

- Williamson  
Shipping Dept. (115 Hope St.)

Alex. W. Farm 260 Ogden St.  
Julia Brown

Major R. W. E. Hingston,  
Care Lloyd's Bank  
6 Peel Mall  
London.