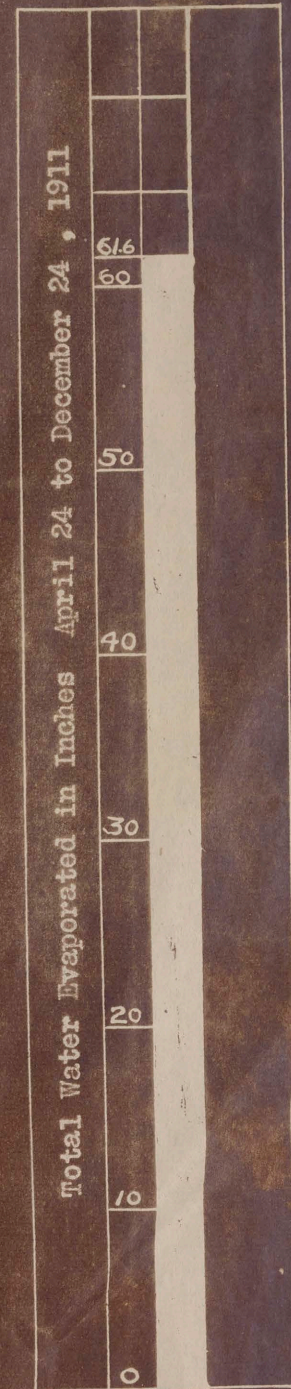
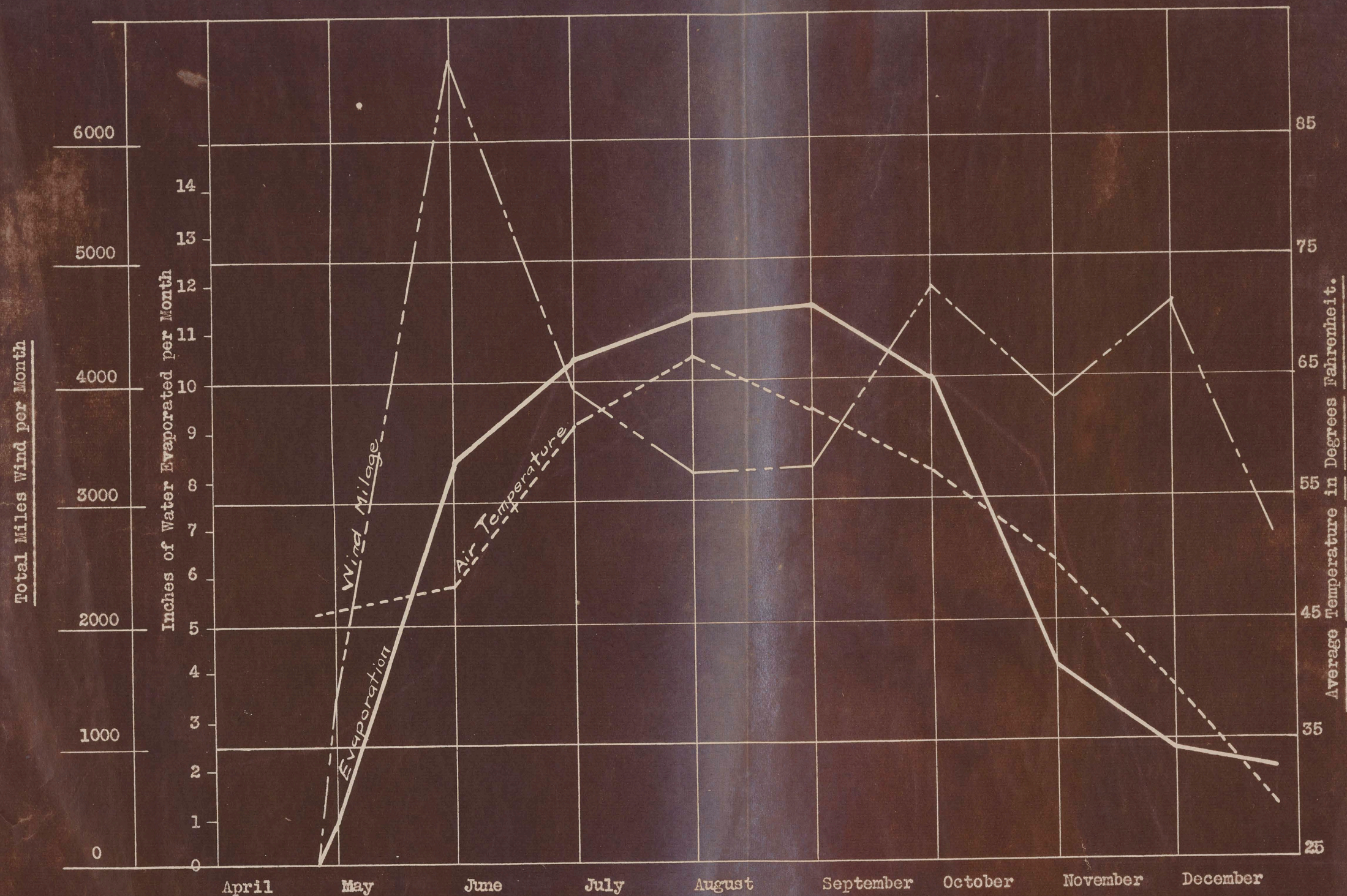


RELATION OF TEMPERATURE, WIND MOVEMENT AND EVAPORATION
FROM AN EIGHT MONTHS RECORD AT RENO, NEVADA 1911



Site of Evaporation Determination Nevada Agricultural Experiment Station Farm, Reno Nevada 1911

Average Temperatures for September, October, November, December obtained from U. S. Weather Bureau

Total wind movement April, May and September to ~~October~~ ^{December} obtained from U. S. Weather Bureau

Balance of points for curves obtained from readings on Station Farm near Evaporation Tank. Evaporation Tank is 23 1/2 " Diam. set in a water jacket on ground level. Evaporation loss determined by weighing.